



100-101^{Q&As}

CCNA Interconnecting Cisco Networking Devices 1 (ICND1)

Pass Cisco 100-101 Exam with 100% Guarantee

Free Download Real Questions & Answers **PDF** and **VCE** file from:

<https://www.pass4lead.com/100-101.html>

100% Passing Guarantee
100% Money Back Assurance

Following Questions and Answers are all new published by Cisco
Official Exam Center

- ⚙ **Instant Download** After Purchase
- ⚙ **100% Money Back** Guarantee
- ⚙ **365 Days** Free Update
- ⚙ **800,000+** Satisfied Customers



**QUESTION 1**

Why do large OSPF networks use a hierarchical design? (Choose three.)

- A. to decrease latency by increasing bandwidth
- B. to reduce routing overhead
- C. to speed up convergence
- D. to confine network instability to single areas of the network
- E. to reduce the complexity of router configuration
- F. to lower costs by replacing routers with distribution layer switches

Correct Answer: BCD

OSPF implements a two-tier hierarchical routing model that uses a core or backbone tier known as area zero (0). Attached to that backbone via area border routers (ABRs) are a number of secondary tier areas.

The hierarchical approach is used to achieve the following:

Rapid convergence because of link and/or switch failures

Deterministic traffic recovery

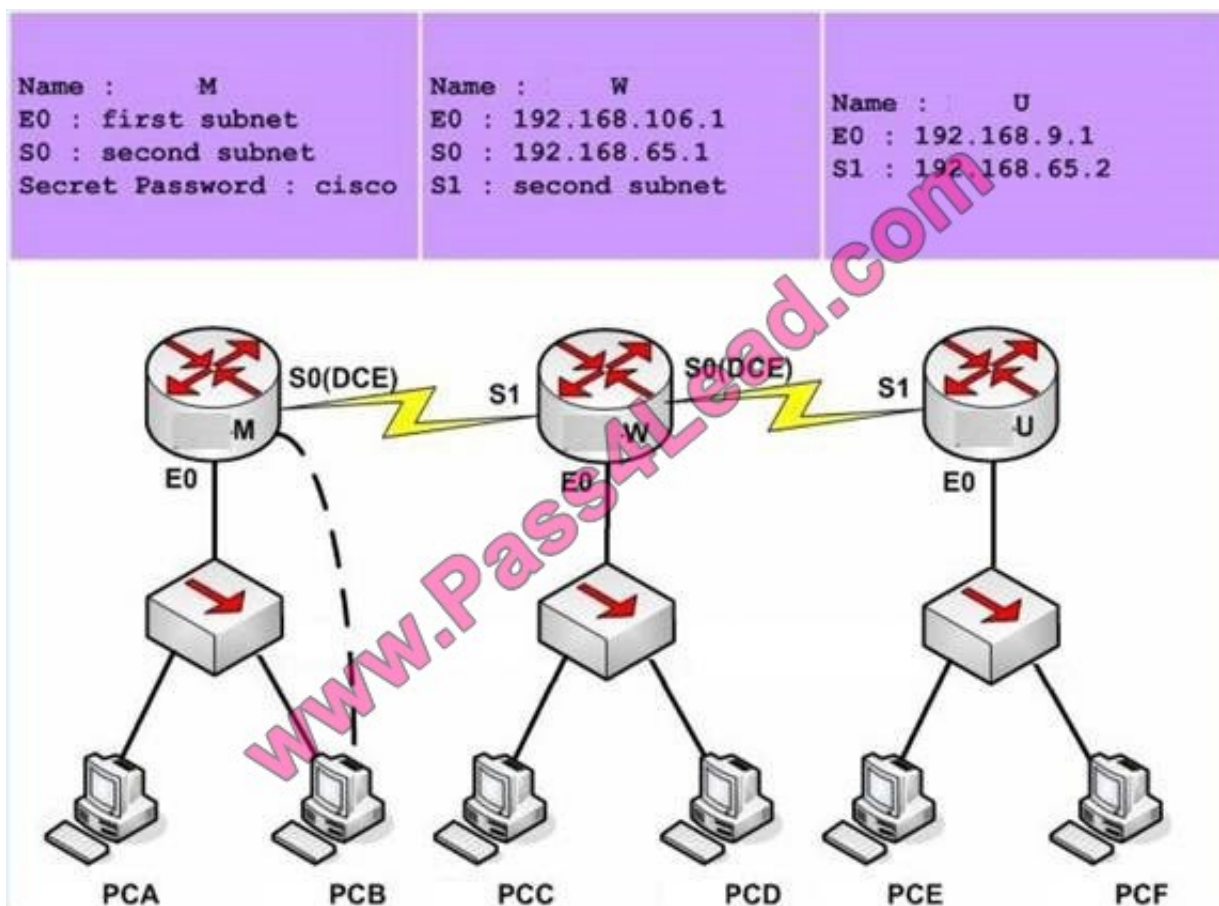
Scalable and manageable routing hierarchy, reduced routing overhead.

QUESTION 2**SIMULATION**

There are three locations in a school district of a large city: ROUTER -M, ROUTER -W and ROUTER -U. The network connection between two of these locations has already functioned.

Configure the ROUTER -M router IP addresses on the E0 and S0 interfaces so that the E0 receives the first usable subnet while the S0 receives the second usable subnet from the network 192.168.160.0/28. Both interfaces would receive the

last available ip address on the proper subnet.



Note. The OSPF process must be configured to allow interfaces in specific subnets to participate in the routing process.

Correct Answer: ROUTER-M> enable

Explanation/Reference:

Password. Cisco

ROUTER-M# config t

ROUTER-M(config)# interface e0

ROUTER-M(config-if)# ip address 192.168.160.14 255.255.255.240

ROUTER-M(config-if)# no shutdown

ROUTER -M(config-if)# exit

ROUTER -M(config)# interface s0

ROUTER-M(config-if)# ip address 192.168.160.30 255.255.255.240

ROUTER-M(config-if)# no shutdown

ROUTER-M(config-if)# end

ROUTER-M# copy run start

**QUESTION 3**

Refer to the exhibit.

```
Cisco#show ip interface brief
```

Interface	IP-Address	OK?	Method	Status	Protocol
FastEthernet0/0	192.168.1.1	YES	manual	up	up
FastEthernet0/1	172.16.1.1	YES	manual	up	up
Loopback0	1.1.1.1	YES	manual	up	up
Loopback1	2.2.2.2	YES	manual	up	up
Vlan1	unassigned	YES	unset	administratively down	down

If the router Cisco returns the given output and has not had its router ID set manually, what value will OSPF use as its router ID?

- A. 192.168.1.1
- B. 172.16.1.1
- C. 1.1.1.1
- D. 2.2.2.2

Correct Answer: D

QUESTION 4

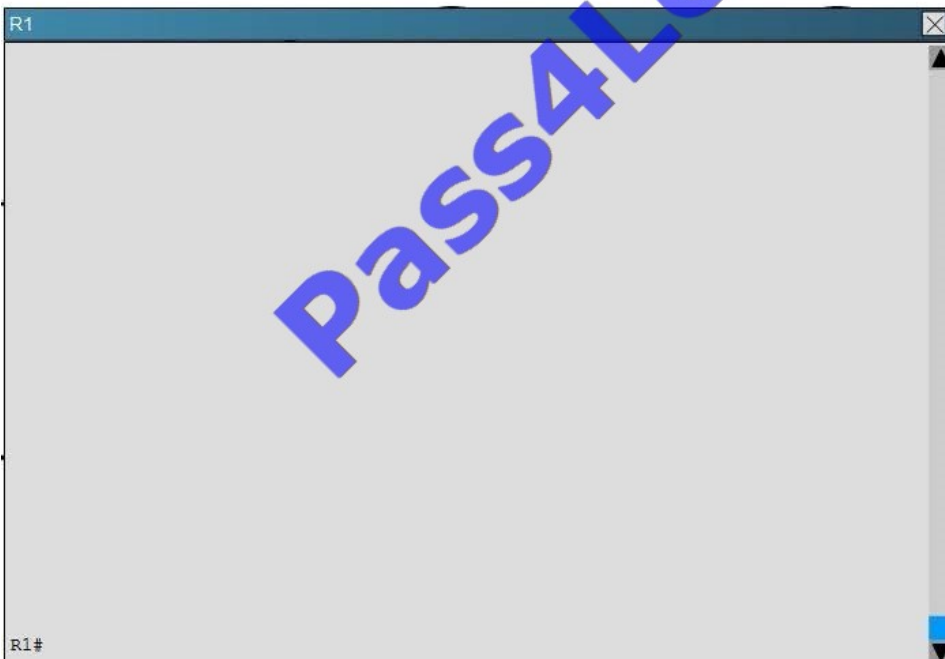
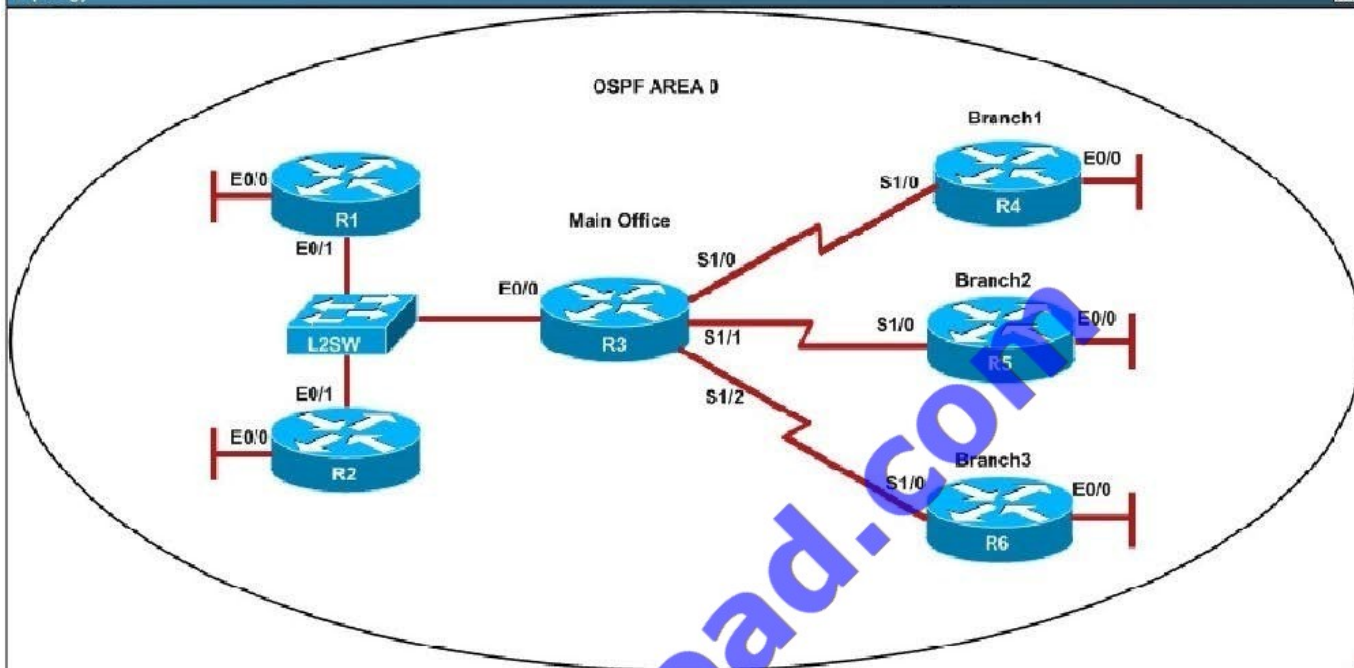
Scenario

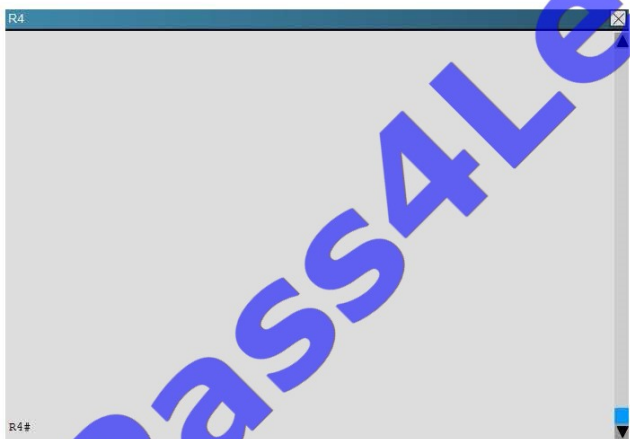
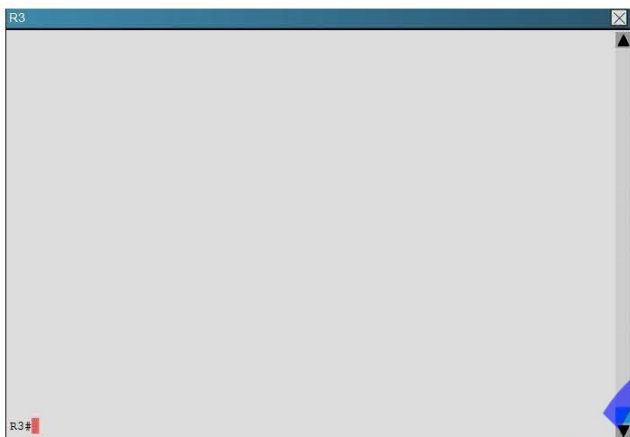
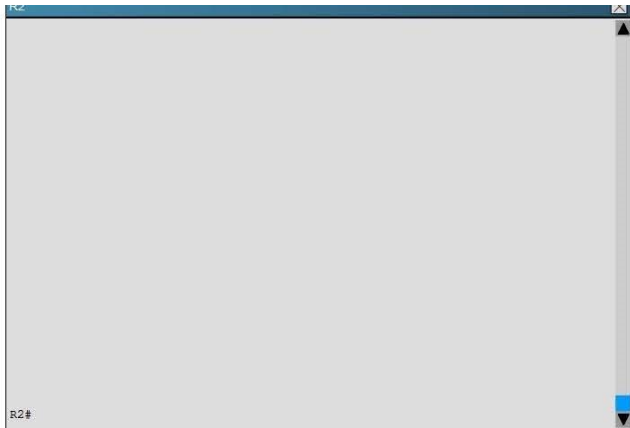
Refer to the topology. Your company has decided to connect the main office with three other remote branch offices using point-to-point serial links.

You are required to troubleshoot and resolve OSPF neighbor adjacency issues between the main office and the routers located in the remote branch offices.



Topology









R1 does not form an OSPF neighbor adjacency with R2. Which option would fix the issue?

- A. R1 ethernetO/1 is shutdown. Configure no shutdown command.
- B. R1 ethernetO/1 configured with a non-default OSPF hello interval of 25: configure no ip ospf hello- interval 25
- C. R2 ethernetO/1 and R3 ethernetO/O are configured with a non-default OSPF hello interval of 25; configure no ip ospf hello-interval 25
- D. Enable OSPF for R1 ethernetO/1; configure ip ospf 1 area 0 command under ethernetO/1

Correct Answer: B

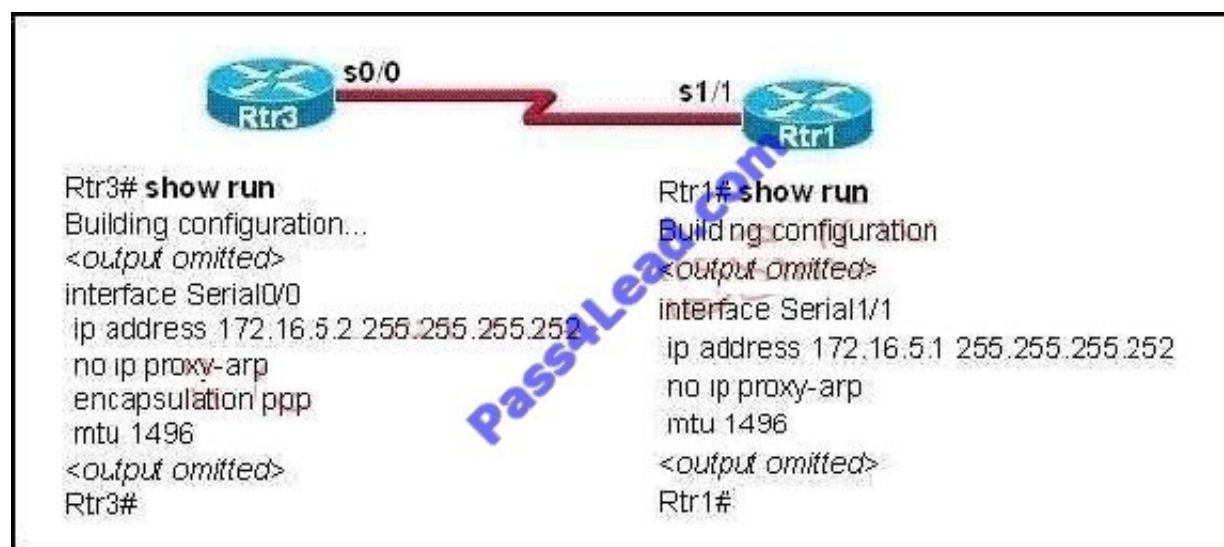
Looking at the configuration of R1, we see that R1 is configured with a hello interval of 25 on interface Ethernet 0/1 while R2 is left with the default of 10 (not configured).



R1	R2
<pre>! ! ! ! ! interface Loopback0 description ***Loopback*** ip address 192.168.1.1 255.255.255.255 ip ospf 1 area 0 ! interface Ethernet0/0 description ***Connected to R1-LAN*** ip address 10.10.110.1 255.255.255.0 ip ospf 1 area 0 ! interface Ethernet0/1 description ***Connected to L2SW*** ip address 10.10.230.1 255.255.255.0 ip ospf hello-interval 25 ip ospf 1 area 0 ! interface Ethernet0/2 no ip address shutdown --- More (35) ---</pre>	<pre>! ! ! ! ! ! interface Loopback0 description ***Loopback*** ip address 192.168.2.2 255.255.255.255 ip ospf 2 area 0 ! interface Ethernet0/0 description ***Connected to R2-LAN*** ip address 10.10.120.1 255.255.255.0 ip ospf 2 area 0 ! interface Ethernet0/1 description ***Connected to L2SW*** ip address 10.10.230.2 255.255.255.0 ip ospf 2 area 0 ! interface Ethernet0/2 no ip address shutdown --- More (35) ---</pre>

QUESTION 5

Refer to the exhibit.



A network administrator is troubleshooting a connectivity problem on the serial interfaces. The output from the show interfaces command on both routers shows that the serial interface is up, line protocol is down. Given the partial output for the show running-config in the exhibit, what is the most likely cause of this problem?

A. The serial cable is bad.



- B. The MTU is incorrectly configured.
- C. The Layer 2 framing is misconfigured.
- D. The IP addresses are not in the same subnet.

Correct Answer: C

[Latest 100-101 Dumps](#)

[100-101 Practice Test](#)

[100-101 Study Guide](#)



To Read the [Whole Q&As](#), please purchase the [Complete Version](#) from [Our website](#).

Try our product !

100% Guaranteed Success

100% Money Back Guarantee

365 Days Free Update

Instant Download After Purchase

24x7 Customer Support

Average 99.9% Success Rate

More than 800,000 Satisfied Customers Worldwide

Multi-Platform capabilities - [Windows](#), [Mac](#), [Android](#), [iPhone](#), [iPod](#), [iPad](#), [Kindle](#)

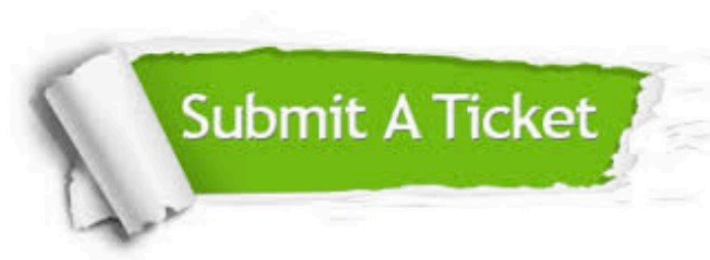
We provide exam PDF and VCE of Cisco, Microsoft, IBM, CompTIA, Oracle and other IT Certifications. You can view Vendor list of All Certification Exams offered:

<https://www.pass4lead.com/allproducts>

Need Help

Please provide as much detail as possible so we can best assist you.

To update a previously submitted ticket:



 One Year Free Update <p>Free update is available within One Year after your purchase. After One Year, you will get 50% discounts for updating. And we are proud to boast a 24/7 efficient Customer Support system via Email.</p>	 Money Back Guarantee <p>To ensure that you are spending on quality products, we provide 100% money back guarantee for 30 days from the date of purchase.</p>	 Security & Privacy <p>We respect customer privacy. We use McAfee's security service to provide you with utmost security for your personal information & peace of mind.</p>
---	---	--

Any charges made through this site will appear as Global Simulators Limited.

All trademarks are the property of their respective owners.

Copyright © pass4lead, All Rights Reserved.