

# 1Y0-301<sup>Q&As</sup>

Deploying Citrix XenDesktop 7.6 Solutions

## Pass Citrix 1Y0-301 Exam with 100% Guarantee

Free Download Real Questions & Answers **PDF** and **VCE** file from:

<https://www.pass2lead.com/1y0-301.html>

100% Passing Guarantee  
100% Money Back Assurance

Following Questions and Answers are all new published by Citrix  
Official Exam Center

- ⚙ **Instant Download** After Purchase
- ⚙ **100% Money Back** Guarantee
- ⚙ **365 Days** Free Update
- ⚙ **800,000+** Satisfied Customers



## QUESTION 1

What does a Citrix Engineer need to do to encrypt all communications to and from virtual desktops?

- A. Secure XML traffic.
- B. Enable SecureICA.
- C. Implement StoreFront HTTPS.
- D. Configure Secure Ticket Authority (STA).

Correct Answer: B Section: (none)

---

## QUESTION 2

When should a Citrix Engineer implement the Remote PC Access FlexCast model?

- A. When users need to bring their own non-domain device (BYOD).
- B. When users need to use the Remote Desktop Protocol (RDP) to connect to existing desktops.
- C. When users need to connect to existing desktops in the environment with specialized hardware installed.
- D. When users need to connect to WiFi-connected laptops in the environment with specialized software installed.

Correct Answer: C Section: (none)

---

## QUESTION 3

Which PowerShell cmdlet will reset StoreFront to the initial factory settings once the StoreFront server is removed from an existing server group?

- A. Clear-DSConfiguration
- B. Clear-WebConfiguration
- C. Remove-SFServiceMetadata
- D. Remove-SFServerFromCluster

Correct Answer: A Section: (none)

---

## QUESTION 4

Which two statements are true about Remote PC Access? (Choose two.)

- A. Users may only access one desktop at a time using Remote PC Access.

- B. Remote PC Access could only be selected during the initial installation of XenDesktop.
- C. Multiple users could log on to the same desktop using Remote PC Access at the same time.
- D. Each desktop used for Remote PC Access needs to be joined to a domain with a wired connection.
- E. Desktops configured for Remote PC Access could be added to an existing XenDesktop environment.

Correct Answer: DE Section: (none)

## QUESTION 5

### CORRECT TEXT

Scenario: A Citrix Engineer at CCH needs to provide owners of a specific application with delegated administrative rights to perform specific tasks on their application and the servers hosting their application. The application owners need permissions to do the following: Add and remove the application from a Delivery Group Create and delete applications Edit application properties Add and remove the application from Maintenance Mode Perform power operations on Windows Server machines

Permissions should be specifically granted to the CCH\MedAppAdmins group and assigned to a custom scope.

Tasks:

1.

Create a custom role named MedAppAdmins.

2.

Assign only the required permissions to the newly created role.

3.

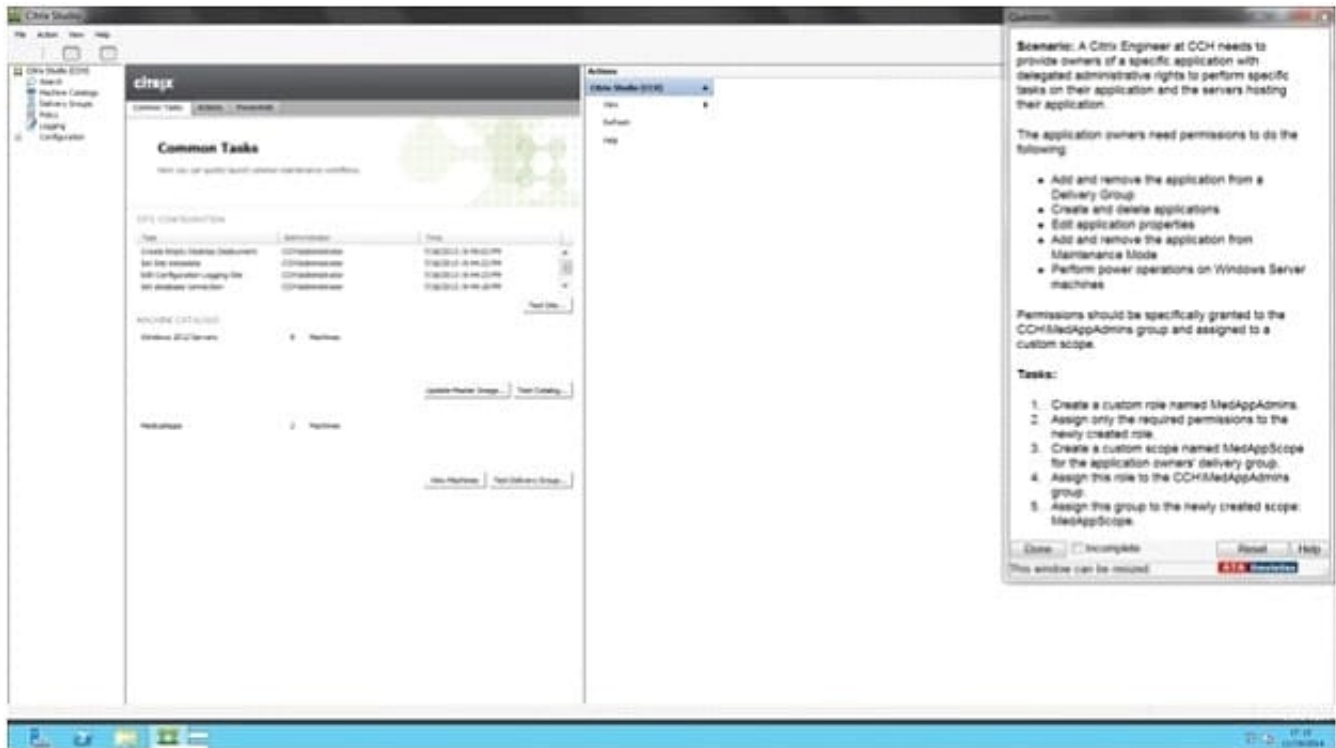
Create a custom scope named MedAppScope for the application owners\' delivery group.

4.

Assign this role to the CCH\MedAppAdmins group.

5.

Assign this group to the newly created scope: MedAppScope.



A.

Correct Answer: A Section: (none)

Answer: Find the solution with all steps below. To create a custom role

1.

In Studio, click Configuration > Administrators in the left pane, then click the Roles tab in the middle pane. A list of existing roles appears.

2.

In the Actions pane, click Create new Role.

3.

Type a name and description for the role.

4.

For each object type that you want this role to have permissions for, select the object type, then select the permissions.

- Add and remove the application from a Delivery Group
- Create and delete applications
- Edit application properties
- Add and remove the application from Maintenance Mode
- Perform power operations on Windows Server machines

1. Click Save. To create a scope

1.

In Studio, click Configuration > Administrators in the left pane, then click the Scopes tab in the middle pane. A list of existing scopes appears.

2.

In the Actions pane, click Create new Scope.

3.

Type a name (for example, '\\Sales\\') and a description (for example, '\\Delivery Groups used by Sales\\') for the scope.

4.

Select object types or specific objects:

a.

To select all objects of a particular type (for example, Delivery Groups), select the object type.

b.

To select specific objects, expand the type, then select the individual objects (for example, individual Delivery Groups used by the Sales team).

5. Click Save.

[Latest 1Y0-301 Dumps](#)

[1Y0-301 PDF Dumps](#)

[1Y0-301 Braindumps](#)