

# 1Y0-301<sup>Q&As</sup>

Deploying Citrix XenDesktop 7.6 Solutions

## Pass Citrix 1Y0-301 Exam with 100% Guarantee

Free Download Real Questions & Answers **PDF** and **VCE** file from:

<https://www.pass2lead.com/1y0-301.html>

100% Passing Guarantee  
100% Money Back Assurance

Following Questions and Answers are all new published by Citrix  
Official Exam Center

- ⚙ **Instant Download** After Purchase
- ⚙ **100% Money Back** Guarantee
- ⚙ **365 Days** Free Update
- ⚙ **800,000+** Satisfied Customers



### QUESTION 1

Scenario: After configuring high availability for StoreFront servers on the same VLAN, users report intermittent issues accessing Receiver for Web. The NetScaler monitors show both StoreFront servers in an UP state.

What could be causing the issue?

- A. The Citrix XML monitor is misconfigured.
- B. NetScaler is using a ping monitor to check the status of the StoreFront servers.
- C. The StoreFront servers are configured for SSL, but NetScaler is using HTTP monitor.
- D. Routing issues are preventing NetScaler from reaching one of the StoreFront servers.

Correct Answer: B Section: (none)

---

### QUESTION 2

Scenario: Citrix Profile Management is deployed in a XenDesktop environment. A Citrix Engineer set up group policies and configured the .INI file on Desktop OS machines for Citrix Profile Management.

What will take precedence if there is a conflict?

- A. Local Policy
- B. Group Policy
- C. UPMPolicyDefaults\_All.ini
- D. XenDesktop Policy set in Citrix Studio

Correct Answer: B Section: (none)

---

### QUESTION 3

#### CORRECT TEXT

Scenario: A Citrix Engineer at CCH needs to provide owners of a specific application with delegated administrative rights to perform specific tasks on their application and the servers hosting their application. The application owners need permissions to do the following: Add and remove the application from a Delivery Group Create and delete applications Edit application properties Add and remove the application from Maintenance Mode Perform power operations on Windows Server machines

Permissions should be specifically granted to the CCHMedAppAdmins group and assigned to a custom scope.

Tasks:

- 1.

Create a custom role named MedAppAdmins.

2.

Assign only the required permissions to the newly created role.

3.

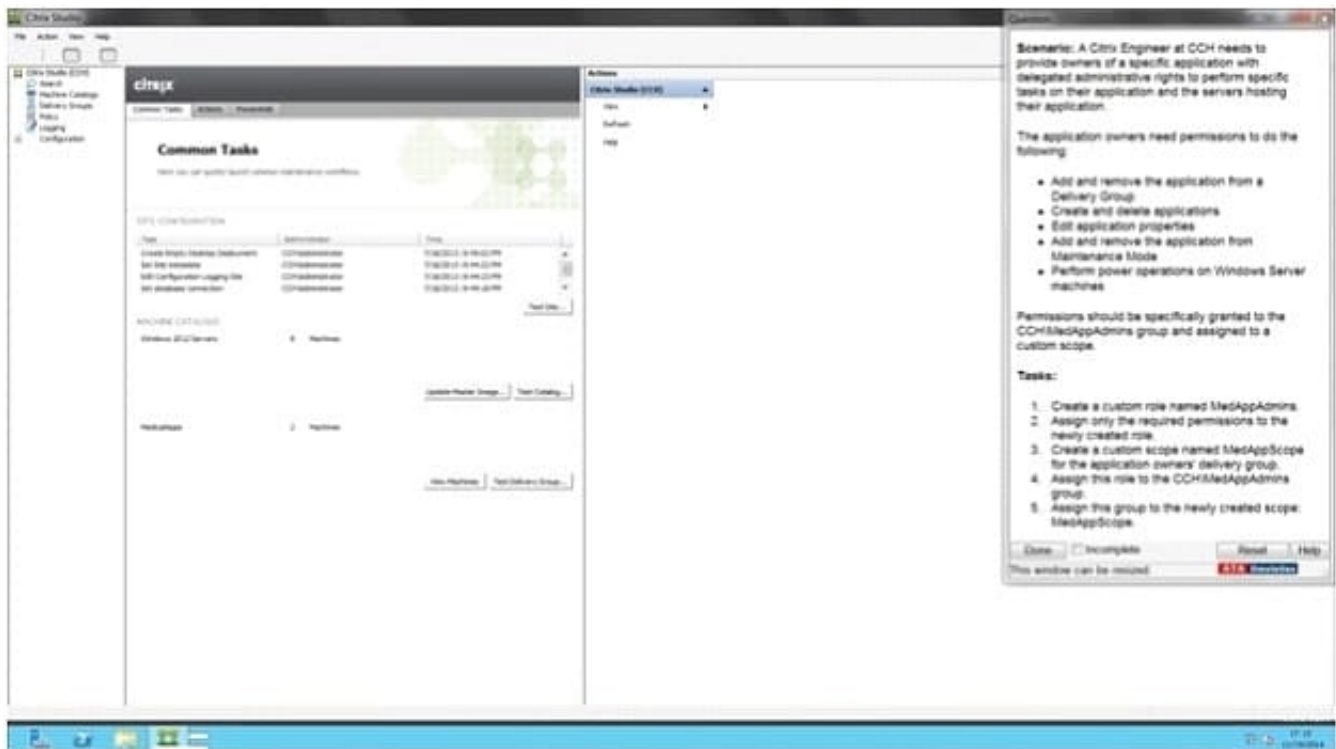
Create a custom scope named MedAppScope for the application owners\ delivery group.

4.

Assign this role to the CCH\MedAppAdmins group.

5.

Assign this group to the newly created scope: MedAppScope.



A.

Correct Answer: A Section: (none)

Answer: Find the solution with all steps below. To create a custom role

1.

In Studio, click Configuration > Administrators in the left pane, then click the Roles tab in the middle pane. A list of existing roles appears.

2.

In the Actions pane, click Create new Role.

3.

Type a name and description for the role.

4.

For each object type that you want this role to have permissions for, select the object type, then select the permissions.

- Add and remove the application from a Delivery Group
- Create and delete applications
- Edit application properties
- Add and remove the application from Maintenance Mode
- Perform power operations on Windows Server machines

1. Click Save. To create a scope

1.

In Studio, click Configuration > Administrators in the left pane, then click the Scopes tab in the middle pane. A list of existing scopes appears.

2.

In the Actions pane, click Create new Scope.

3.

Type a name (for example, '\\Sales\\') and a description (for example, '\\Delivery Groups used by Sales\\') for the scope.

4.

Select object types or specific objects:

a.

To select all objects of a particular type (for example, Delivery Groups), select the object type.

b.

To select specific objects, expand the type, then select the individual objects (for example, individual Delivery Groups used by the Sales team).

5. Click Save.

---

#### QUESTION 4

Which two pieces of information are required when using Citrix Studio to connect a Delivery Controller to a hosting infrastructure? (Choose two.)

A. Hypervisor address

- B. Hypervisor credentials
- C. Hypervisor management VLAN
- D. Hypervisor high-availability server address

Correct Answer: CD Section: (none)

---

#### QUESTION 5

Scenario: A Citrix Engineer created a Delivery Group containing 1000 virtual desktops. The engineer sets the power management settings to ensure that 900 desktops are available during peak times, and only 10 during off-peak hours as fewer users log in. The engineer discovers that even in off-peak hours, 100 or more desktops are available.

Which PowerShell cmdlet should the engineer use to set the desired power behavior?

- A. Set-BrokerCatalog
- B. Set-BrokerDesktopGroup
- C. Set-BrokerDesktopPowerAction
- D. Set-BrokerDesktopPowerActionMetaData

Correct Answer: B Section: (none)

[Latest 1Y0-301 Dumps](#)

[1Y0-301 VCE Dumps](#)

[1Y0-301 Study Guide](#)