



200-105^{Q&As}

Interconnecting Cisco Networking Devices Part 2 (ICND2)

Pass Cisco 200-105 Exam with 100% Guarantee

Free Download Real Questions & Answers **PDF** and **VCE** file from:

<https://www.pass4lead.com/200-105.html>

100% Passing Guarantee
100% Money Back Assurance

Following Questions and Answers are all new published by Cisco
Official Exam Center

-  **Instant Download** After Purchase
-  **100% Money Back** Guarantee
-  **365 Days** Free Update
-  **800,000+** Satisfied Customers



**QUESTION 1**

Which command do you enter to determine whether LACP is in use on a device?

- A. Show etherchannel summary
- B. Show port-channel summary
- C. Show etherchannel load-balance
- D. Show ip protocols

Correct Answer: B

QUESTION 2

For which two reasons might you choose chassis aggregation instead of stacking switches? (Choose two.)

- A. to avoid the use of a centralized configuration manager
- B. to avoid relying solely on Ethernet interfaces
- C. to allow hot-swapping modules
- D. to increase the number of devices in use
- E. to increase the maximum port count

Correct Answer: CD

QUESTION 3**Instructions**

This item contains several questions that you must answer. You can view these questions by clicking on the corresponding button to the left. Changing questions can be accomplished by clicking the numbers to the left of each question. In order to complete the questions, you will need to refer to the topology.

To gain access to the topology, click on the topology button at the bottom of the screen. When you have finished viewing the topology, you can return to your questions by clicking on the Questions button to the left.

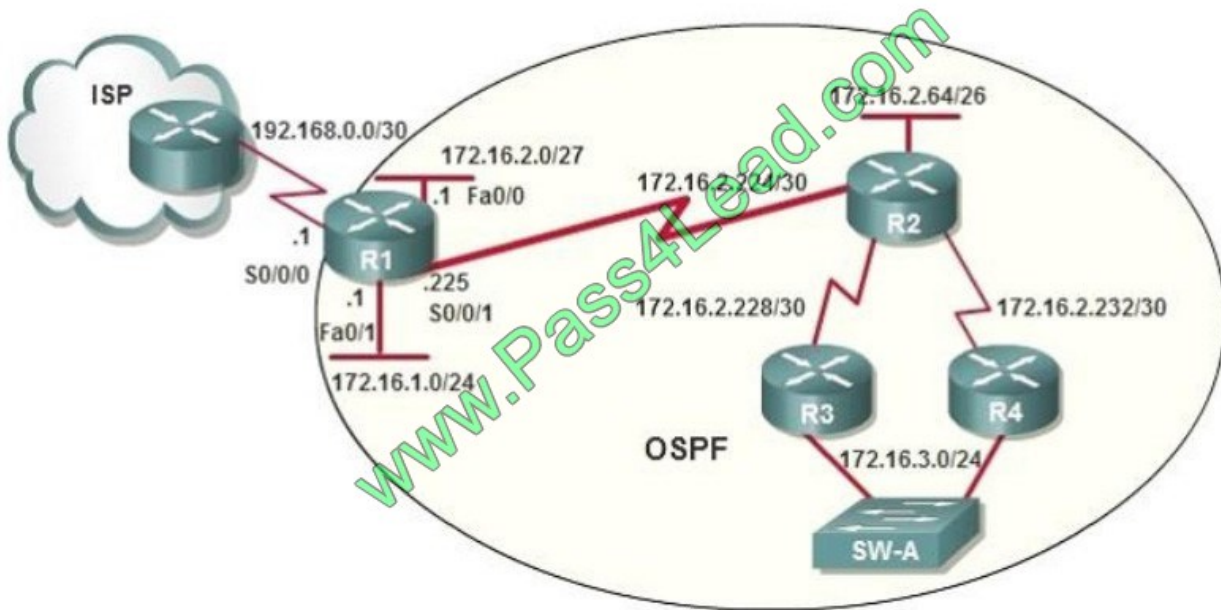
Each of the windows can be minimized by clicking on the [-]. You can also reposition a window by dragging it by the title bar.

Scenario

Refer to the topology. Using the information shown, answer the four questions shown on the Questions tab.



Topology



OSPF is configured using default classful addressing. With all routers and interfaces operational, how many networks will be in the routing table of R1 that are indicated to be learned by OSPF?

- A. 2
- B. 3
- C. 4
- D. 5
- E. 6
- F. 7

Correct Answer: C

It already knows about its directly connected ones, only those not directly connected are "Learned by OSPF". OSPF as a link state routing protocol (deals with LSAs rather than routes) does not auto summarize (doesn't support "auto-summary"). So learned route by OSPF are followed 172.16.2.64/26 172.16.2.228/30 172.16.2.232/30 172.16.3.0/24

QUESTION 4

Users have been complaining that their Frame Relay connection to the corporate site is very slow. The network administrator suspects that the link is overloaded. Based on the partial output of the Router # show frame relay pvc command shown in the graphic, which output value indicates to the local router that traffic sent to the corporate site is experiencing congestion?



PVC Statistics for interface Serial0 (Frame Relay DTE)

	Active	Inactive	Deleted	Static
Local	1	0	0	0
Switched	0	0	0	0
Unused	0	0	0	0

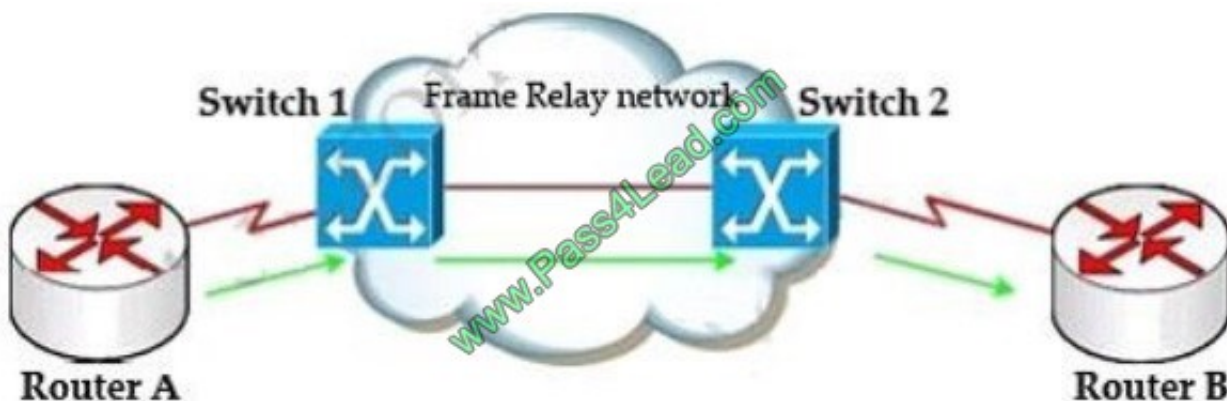
DLCI = 100, DLCI USAGE = LOCAL, PVC STATUS = ACTIVE, INTERFACE = Serial0

input pkts 1300 output pkts 1270 in bytes 22121000
 out bytes 21802000 dropped pkts 4 in FECN pkts 147
 in BECN pkts 192 out FECN pkts 259 out BECN pkts 214
 in DE pkts 0 out DE pkts 0
 out bcst pkts 107 out bcst bytes 19772
 pvc create time 00:25:50, last time pvc status changed 00:25:40

- A. DLCI=100
- B. last time PVC status changed 00:25:40
- C. in BECN packets 192
- D. in FECN packets 147
- E. in DF packets 0

Correct Answer: C

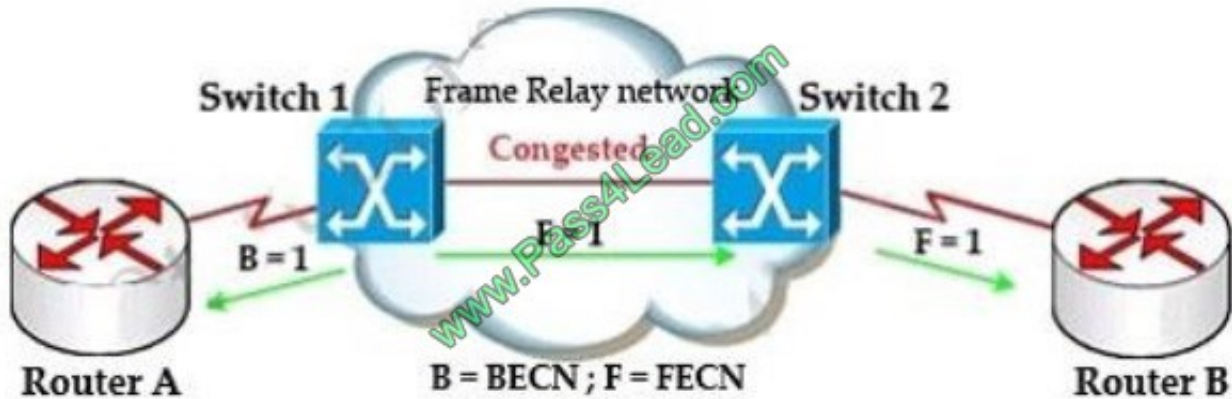
First we should grasp the concept of BECN and FECN through an example:



Suppose Router A wants to send data to Router B through a Frame Relay network. If the network is congested, Switch 1 (a DCE device) will set the FECN bit value of that frame to 1, indicating that frame experienced congestion in the path from source to destination.



This frame is forwarded to Switch 2 and to Router B (with the FECN bit = 1). Switch 1 knows that the network is congesting so it also sends frames back to Router A with BECN bit set to 1 to inform that path through the network is congested.



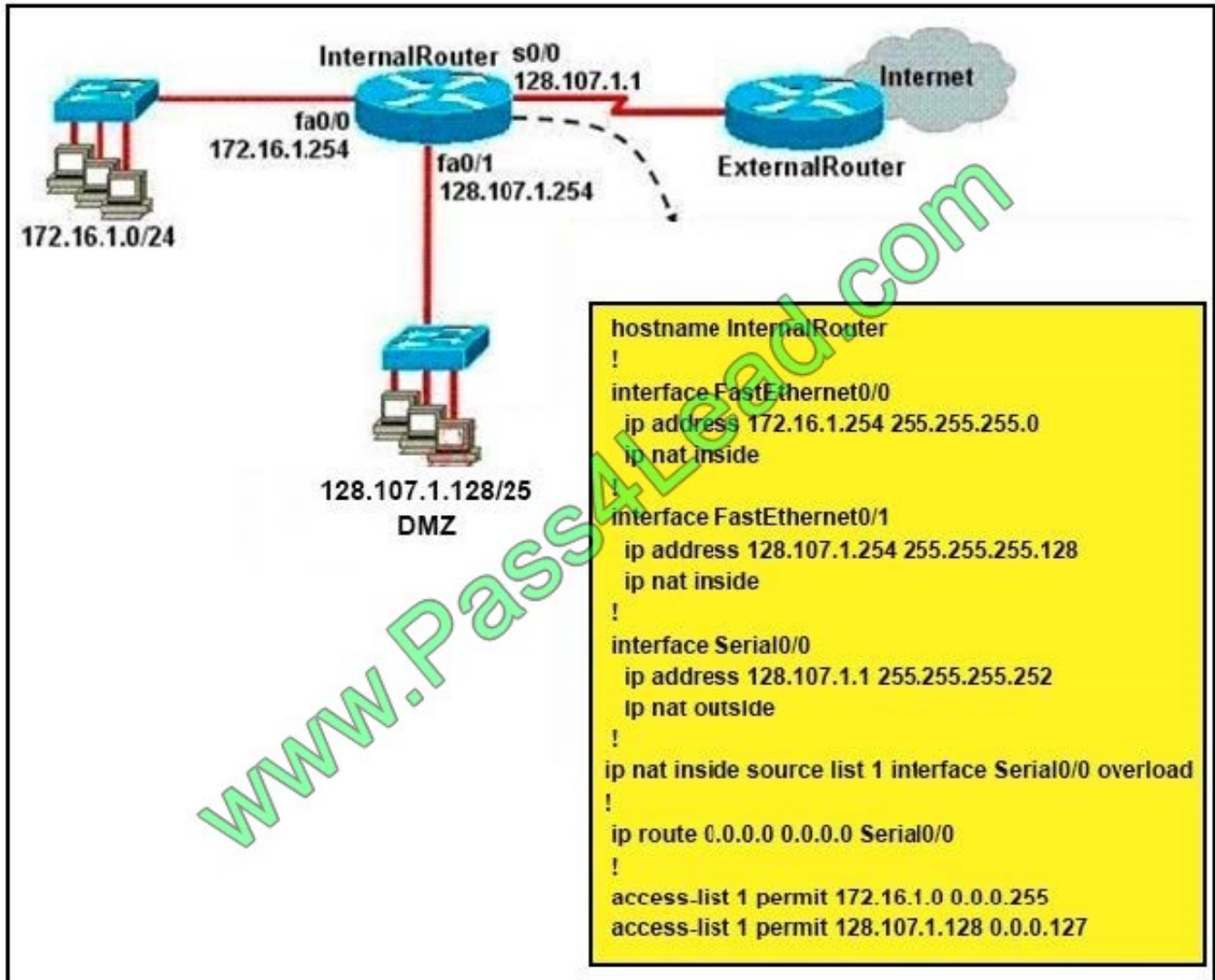
In general, BECN is used on frames traveling away from the congested area to warn source devices that congestion has occurred on that path while FECN is used to alert receiving devices if the frame experiences congestion.

BECN also informs the transmitting devices to slow down the traffic a bit until the network returns to normal state.

The question asks "which output value indicates to the local router that traffic sent to the corporate site is experiencing congestion" which means it asks about the returned parameter which indicates congestion ->BECN.

QUESTION 5

Refer to the exhibit. A junior network engineer has prepared the exhibited configuration file. What two statements are true of the planned configuration for interface fa0/1? (Choose two.)



- A. The two FastEthernet interfaces will require NAT configured on two outside serial interfaces.
- B. Address translation on fa0/1 is not required for DMZ Devices to access the Internet.
- C. The fa0/1 IP address overlaps with the space used by s0/0.
- D. The fa0/1 IP address is invalid for the IP subnet on which it resides.
- E. Internet hosts may not initiate connections to DMZ Devices through the configuration that is shown.

Correct Answer: BE

[200-105 PDF Dumps](#)

[200-105 Study Guide](#)

[200-105 Braindumps](#)



To Read the [Whole Q&As](#), please purchase the [Complete Version](#) from [Our website](#).

Try our product !

100% Guaranteed Success

100% Money Back Guarantee

365 Days Free Update

Instant Download After Purchase

24x7 Customer Support

Average 99.9% Success Rate

More than 800,000 Satisfied Customers Worldwide

Multi-Platform capabilities - [Windows](#), [Mac](#), [Android](#), [iPhone](#), [iPod](#), [iPad](#), [Kindle](#)

We provide exam PDF and VCE of Cisco, Microsoft, IBM, CompTIA, Oracle and other IT Certifications. You can view Vendor list of All Certification Exams offered:

<https://www.pass4lead.com/allproducts>

Need Help

Please provide as much detail as possible so we can best assist you.

To update a previously submitted ticket:



 <p>One Year Free Update Free update is available within One Year after your purchase. After One Year, you will get 50% discounts for updating. And we are proud to boast a 24/7 efficient Customer Support system via Email.</p>	 <p>Money Back Guarantee To ensure that you are spending on quality products, we provide 100% money back guarantee for 30 days from the date of purchase.</p>	 <p>Security & Privacy We respect customer privacy. We use McAfee's security service to provide you with utmost security for your personal information & peace of mind.</p>
---	---	--

Any charges made through this site will appear as Global Simulators Limited.

All trademarks are the property of their respective owners.

Copyright © pass4lead, All Rights Reserved.