

412-79V8^{Q&As}

EC-Council Certified Security Analyst (ECSA)

Pass EC-COUNCIL 412-79V8 Exam with 100% Guarantee

Free Download Real Questions & Answers **PDF** and **VCE** file from:

<https://www.pass2lead.com/412-79v8.html>

100% Passing Guarantee
100% Money Back Assurance

Following Questions and Answers are all new published by EC-COUNCIL Official Exam Center

- ⚙️ **Instant Download** After Purchase
- ⚙️ **100% Money Back** Guarantee
- ⚙️ **365 Days** Free Update
- ⚙️ **800,000+** Satisfied Customers



QUESTION 1

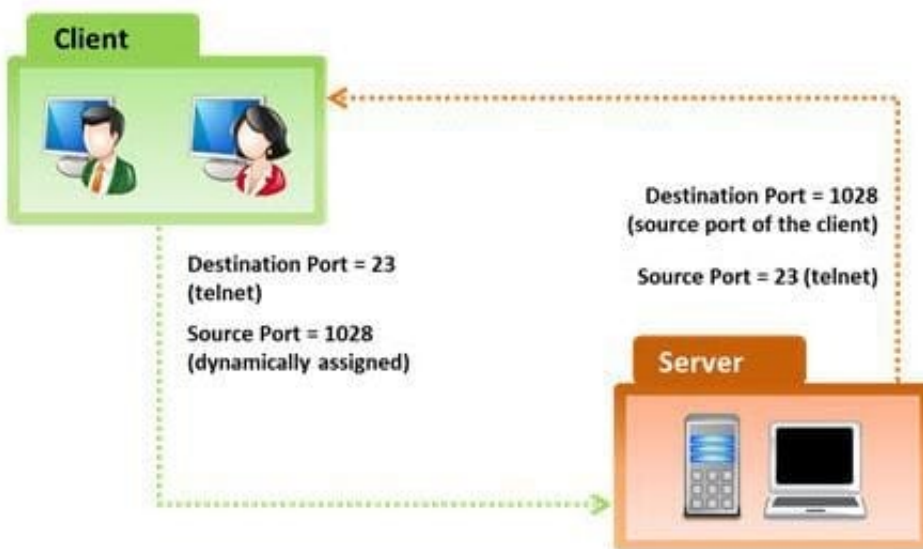
Traffic on which port is unusual for both the TCP and UDP ports?

- A. Port 81
- B. Port 443
- C. Port 0
- D. Port 21

Correct Answer: C

QUESTION 2

In the TCP/IP model, the transport layer is responsible for reliability and flow control from source to the destination. TCP provides the mechanism for flow control by allowing the sending and receiving hosts to communicate. A flow control mechanism avoids the problem with a transmitting host overflowing the buffers in the receiving host.



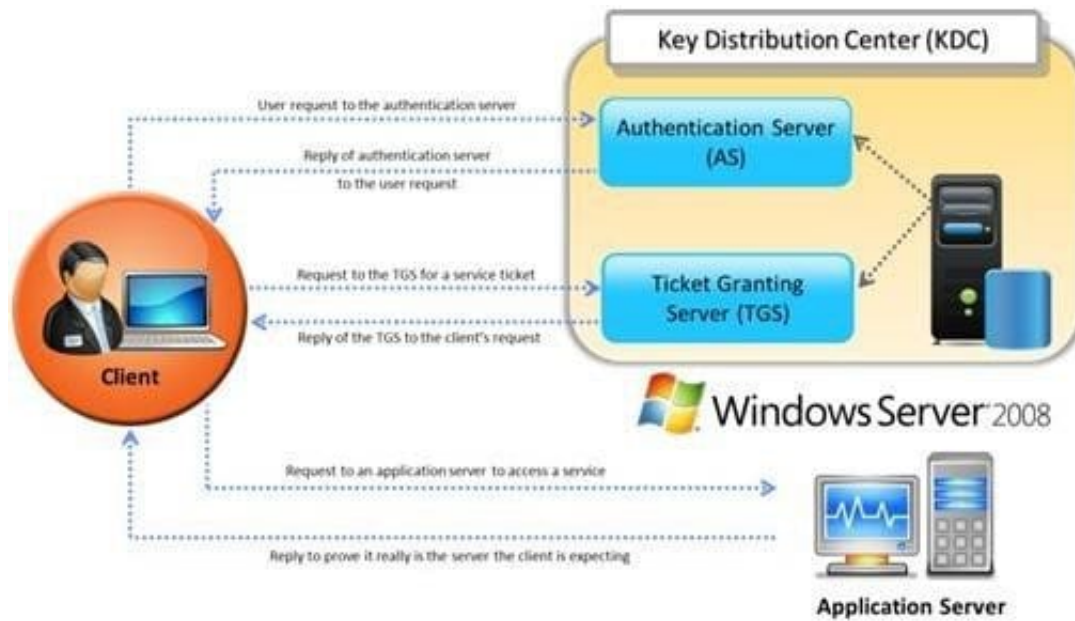
Which of the following flow control mechanism guarantees reliable delivery of data?

- A. Sliding Windows
- B. Windowing
- C. Positive Acknowledgment with Retransmission (PAR)
- D. Synchronization

Correct Answer: C

QUESTION 3

Identify the type of authentication mechanism represented below:



- A. NTLMv1
- B. NTLMv2
- C. LAN Manager Hash
- D. Kerberos

Correct Answer: D

QUESTION 4

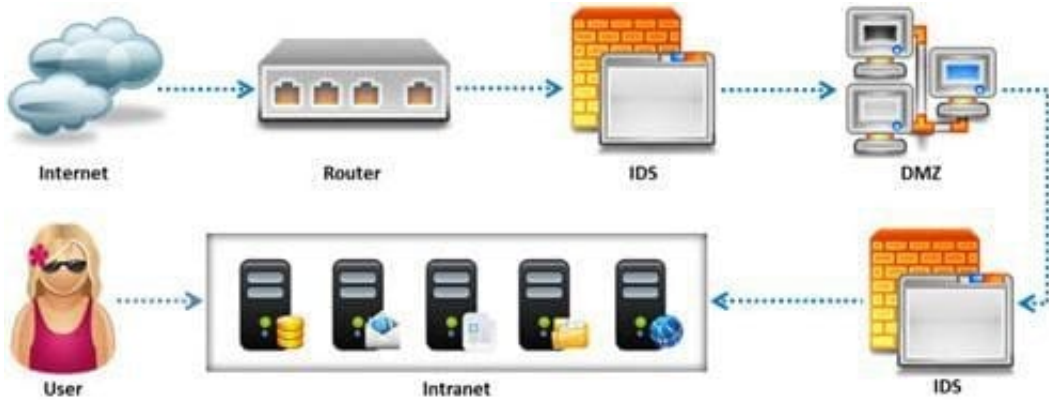
Which of the following scan option is able to identify the SSL services?

- A. sS
- B. sV C. sU
- D. sT

Correct Answer: B

QUESTION 5

Due to illegal inputs, various types of TCP stacks respond in a different manner. Some IDSs do not take into account the TCP protocol's urgency feature, which could allow testers to evade the IDS.



Penetration tester needs to try different combinations of TCP flags (e.g. none, SYN/FIN, SYN/RST, SYN/ FIN/ACK, SYN/RST/ACK, and All Flags) to test the IDS. Which of the following TCP flag combinations combines the problem of initiation, midstream, and termination flags with the PSH and URG?

- A. SYN/RST/ACK
- B. SYN/FIN/ACK
- C. SYN/FIN
- D. All Flags

Correct Answer: D

[412-79V8 PDF Dumps](#)

[412-79V8 Study Guide](#)

[412-79V8 Exam Questions](#)