

# JN0-332<sup>Q&As</sup>

Juniper Networks Certified Internet Specialist, SEC (JNCIS-SEC)

## Pass Juniper JN0-332 Exam with 100% Guarantee

Free Download Real Questions & Answers **PDF** and **VCE** file from:

<https://www.pass2lead.com/jn0-332.html>

100% Passing Guarantee  
100% Money Back Assurance

Following Questions and Answers are all new published by Juniper  
Official Exam Center

- ⚙️ **Instant Download** After Purchase
- ⚙️ **100% Money Back** Guarantee
- ⚙️ **365 Days** Free Update
- ⚙️ **800,000+** Satisfied Customers



**QUESTION 1**

A packet that does not belong to an existing session enters your SRX Series device. Your SRX Series device is operating in its default mode.

Which two statements are true? (Choose two.)

- A. The packet is processed through the fast path.
- B. The packet is subject to policer operations.
- C. The packet is subject to stateless filters.
- D. The packet is not processed because no session ID exists.

Correct Answer: BC

---

**QUESTION 2**

Which encryption type is used to secure user data in an IPsec tunnel?

- A. symmetric key encryption
- B. asymmetric key encryption
- C. RSA
- D. digital certificates

Correct Answer: A

---

**QUESTION 3**

On which component is the control plane implemented?

- A. IOC
- B. PIM
- C. RE
- D. SPC

Correct Answer: C

---

**QUESTION 4**

Click the Exhibit button.

[edit chassis]

user@host# show

```
cluster {
```

```
  reth-count 3;
```

```
  redundancy-group 1 {
```

```
    node 0 priority 1;
```

```
    node 1 priority 100;
```

```
  }}
```

When applying the configuration in the exhibit and initializing a chassis cluster, which statement is correct?

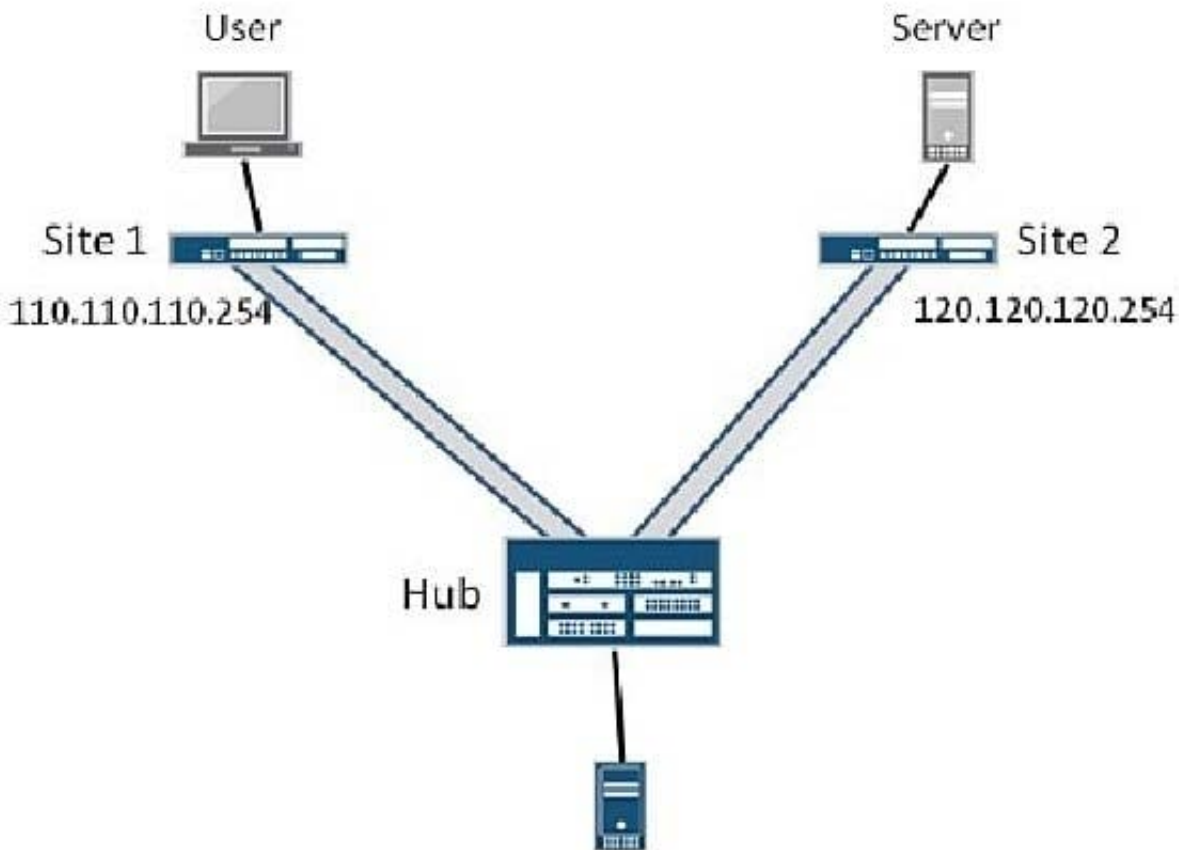
- A. Three physical interfaces are redundant.
- B. You must define an additional redundancy group.
- C. node 0 will immediately become primary for redundancy group 1.
- D. You must issue an operational command and reboot the system for the above configuration to take effect.

Correct Answer: D

---

## QUESTION 5

-- Exhibit



-- Exhibit -

Click the Exhibit button.

You are asked to configure a hub-and-spoke VPN. All the VPN components have been configured, and you are able to ping the remote tunnel interfaces at Site 1 and Site 2 from the Hub site as shown in the exhibit. The Hub site's external interface is in security zone untrust and the st0 interfaces from each site are in security zone DMZ. Users in Site 2 are unable to connect to a Web server in Site 1.

Which additional step is required at the hub site for users to access the Web server?

- A. Configure a VPN between Site 1 and Site 2.
- B. Configure a policy in the untrust zone that allows traffic between the sites.
- C. Configure a policy in the VPN zone that allows traffic between the sites.
- D. Configure a policy between the VPN and untrust zones.

Correct Answer: C

[Latest JN0-332 Dumps](#)

[JN0-332 Practice Test](#)

[JN0-332 Brindumps](#)