

PW0-250^{Q&As}

Certified Wireless Design Professional (CWDP)

Pass CWNP PW0-250 Exam with 100% Guarantee

Free Download Real Questions & Answers **PDF** and **VCE** file from:

<https://www.pass2lead.com/pw0-250.html>

100% Passing Guarantee
100% Money Back Assurance

Following Questions and Answers are all new published by CWNP
Official Exam Center

- ⚙️ **Instant Download** After Purchase
- ⚙️ **100% Money Back** Guarantee
- ⚙️ **365 Days** Free Update
- ⚙️ **800,000+** Satisfied Customers



QUESTION 1

When deploying long-distance 802.11 bridge links (10 miles / 16 km), what parameter may be critical for improving data flow by reducing retries caused by the long distances?

- A. The sequence control field value
- B. The acknowledgement timeout threshold
- C. The minimum transmit data rate value
- D. The CTS-to-self threshold
- E. The Beacon interval
- F. The PHY parameter set field

Correct Answer: B

QUESTION 2

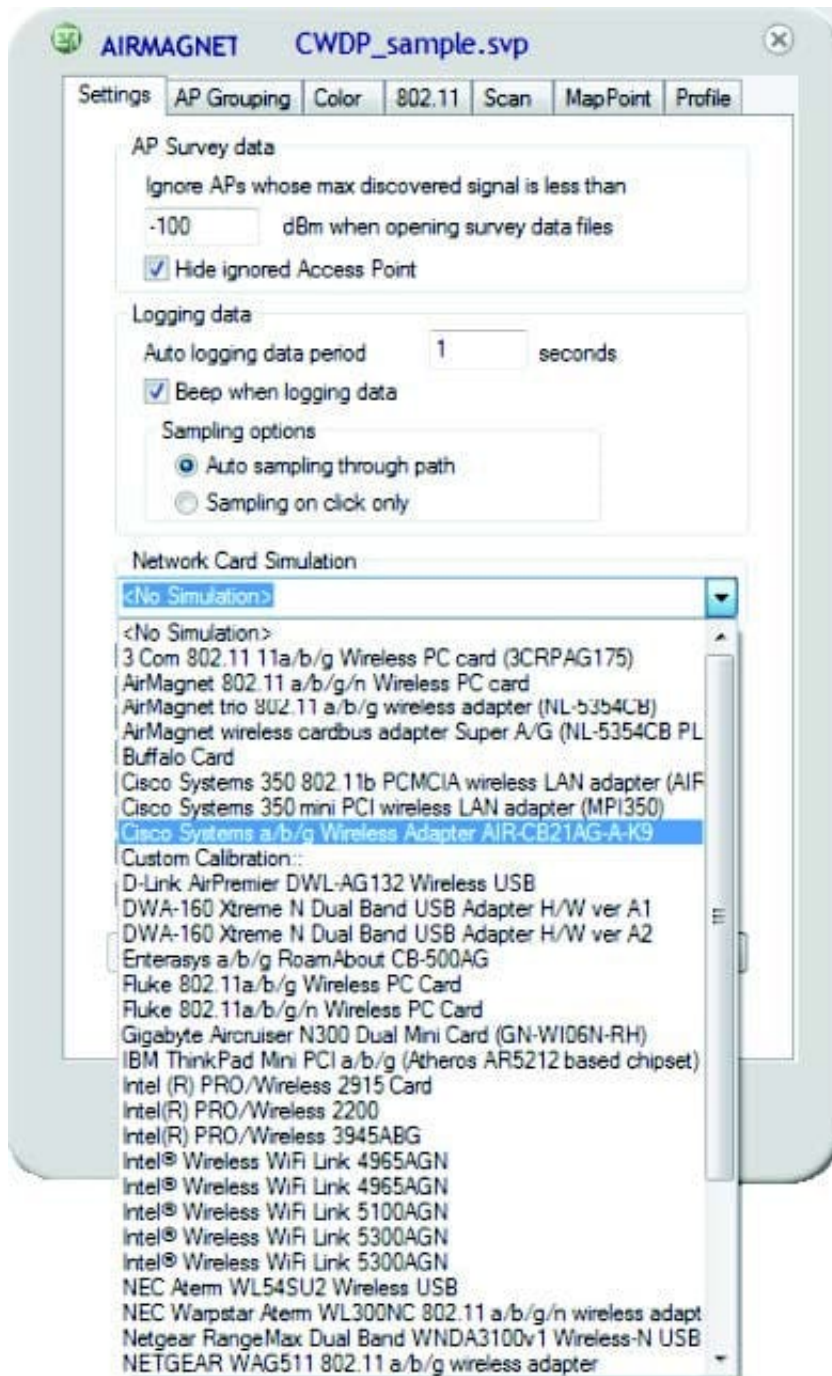
You are working on a VoWLAN design with your customer's wired networking team. How many distinct priority levels do you expect for the voice applications?

- A. 1 priority level, but 2 queues (one for uplink traffic, one for downlink traffic)
- B. 1 priority level per client and AP pair, so the total number depends on the expected number of clients
- C. 1 priority level for voice RTP, 1 priority level for voice control and RTCP
- D. 1 priority level for VoWLAN client traffic, 1 priority level for wired VoIP client traffic

Correct Answer: C

QUESTION 3

While configuring your site survey software for an upcoming manual survey project, you notice the configuration option for "Network Card Simulation" as shown in the exhibit.



- A. This setting allows the site survey software to convert the AP's measured downlink RF data into a simulated data set as if the same data were transmitted by a specific client station. It is useful for determining uplink client performance when clients are located far from APs as well as projecting cell size for ad hoc networks.
- B. Since WLAN adapters are not typically calibrated by manufacturers, this setting is a form of software calibration in which you can calibrate an (uncalibrated) adapter to match one of the calibrated adapters shown in the list. This process improves the reliability of RF data collection and reporting when uncalibrated adapters are used.
- C. This is the configuration area in which you specify the adapter type that will be used for the site survey so that the survey software can interpret that adapter's reported metrics (based on proprietary formulas) into an RF measurement that is standardized by the survey software and known to its users. This is done for every survey.
- D. The site survey software manufacturer allows you to view the collected RF data as if it were collected by a different

type of adapter. This functionality allows you to review survey data to determine how the RF environment will likely look based on the receive sensitivity and other RF capabilities of a specific client adapter.

Correct Answer: D

QUESTION 4

Assume that your network operates in a regulatory domain that allows use of UNII-1, UNII-2, UNII- 2e, UNII-3, and the 5.8 GHz ISM band for indoor Wi-Fi. In your upcoming 802.11n deployment, you would like to take advantage of the performance improvements that result from channel bonding. However, after extensive testing, you have determined that your mission-critical WLAN should not use channels requiring DFS support.

Given those two criteria (enable channel bonding and disable DFS channels), in the 5 GHz spectrum, how many non-overlapping channels will your system be able to use?

- A. 2
- B. 3
- C. 4
- D. 6
- E. 11

Correct Answer: C

QUESTION 5

Given: Assume that music on hold (MOH) features are unicast only.

What VoWiFi implementations require multicast packet delivery support by the WLAN infrastructure?

- A. All VoWiFi implementations
- B. Push-to-Talk VoWiFi phones
- C. VoWiFi soft phones
- D. FMC phones
- E. Flat (non-VLAN) VoWiFi implementations

Correct Answer: B
