

# 010-151<sup>Q&As</sup>

Supporting Cisco Data Center System Devices

## Pass Cisco 010-151 Exam with 100% Guarantee

Free Download Real Questions & Answers **PDF** and **VCE** file from:

<https://www.pass2lead.com/010-151.html>

100% Passing Guarantee  
100% Money Back Assurance

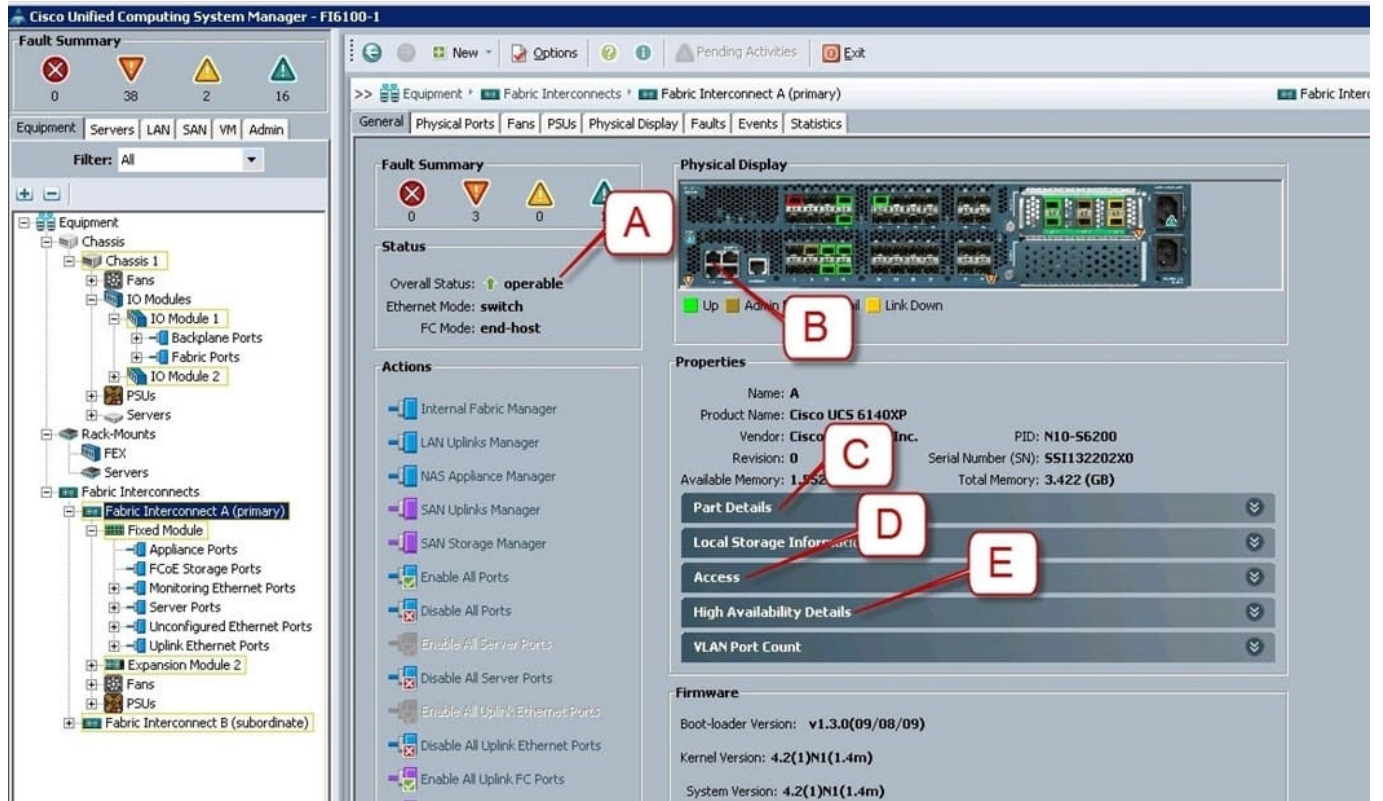
Following Questions and Answers are all new published by Cisco  
Official Exam Center

-  **Instant Download** After Purchase
-  **100% Money Back** Guarantee
-  **365 Days** Free Update
-  **800,000+** Satisfied Customers



**QUESTION 1**

Refer to the exhibit.



Where is the best place to see whether the system is ready for a Fabric Interconnect failover?

- A. A - Overall Status operable
- B. B - L1 Connection
- C. C - Part Details
- D. D - Access
- E. E - High Availability Details

Correct Answer: E

**QUESTION 2**

Which method does FCIP use to enable connectivity of geographically distributed Fibre Channel SANs over IP?

- A. routing
- B. tunneling
- C. handshaking

D. transporting

Correct Answer: B

---

### QUESTION 3

Which two statements about Cisco UCS S3260 Storage Server are true? (Choose two.)

- A. AMD EPYC 7000 series processors, with up to 32 cores per socket
- B. Up to 1 TB of Intel Optane DC Persistent Memory
- C. It is in a compact 2-RU form factor.
- D. Support for the Cisco 12-G 9460-8i PCIe SAS RAID controller
- E. Massive 840-TB data storage capacity

Correct Answer: DE

Reference: <https://www.cisco.com/c/dam/en/us/products/collateral/servers-unified-computing/ucs-s-series-storage-servers/s3260-specsheet.pdf>

---

### QUESTION 4

Which two statements are true for the Ethernet 802.3 standard? (Choose two.)

- A. An 802.3 Ethernet frame is 68 to 1518 bytes in length.
- B. CSMA/CD eliminates collisions for the switched LAN where multiple collision domains reside.
- C. It defines physical layer and data link layer protocols.
- D. The IEEE 802.3ab standard defines 10 Gigabit Ethernet over unshielded twisted-pair (UTP).
- E. Network layer protocol is carried in the payload field.

Correct Answer: BC

---

### QUESTION 5

Where do you find the model number of a Cisco MDS 9200 Series chassis?

- A. on the top front of the chassis next to the serial number
- B. on the bottom front of the chassis next to the Cisco logo
- C. on the top front of the chassis next to the Cisco logo

D. on the bottom front of the chassis next to the serial number

Correct Answer: C

[010-151 VCE Dumps](#)

[010-151 Practice Test](#)

[010-151 Braindumps](#)