



100-105^{Q&As}

Interconnecting Cisco Networking Devices Part 1 (ICND1)

Pass Cisco 100-105 Exam with 100% Guarantee

Free Download Real Questions & Answers **PDF** and **VCE** file from:

<https://www.pass4lead.com/100-105.html>

100% Passing Guarantee
100% Money Back Assurance

Following Questions and Answers are all new published by Cisco
Official Exam Center

-  **Instant Download** After Purchase
-  **100% Money Back** Guarantee
-  **365 Days** Free Update
-  **800,000+** Satisfied Customers





QUESTION 1



Instructions

You can click on the grey buttons below to view the different windows.

Each of the windows can be minimized by clicking on the [-]. You can also reposition a window by dragging it by the title bar.

The "Tab" key and most commands that use the "Control" or "Escape" keys are not supported and are not necessary to complete this simulation.

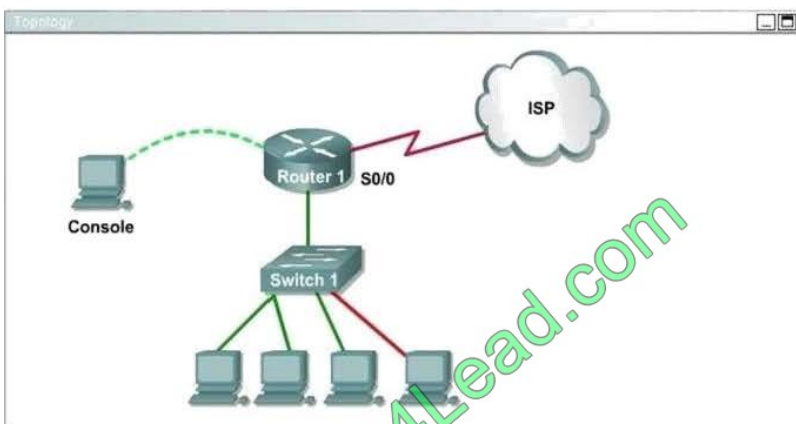
Scenario

This task requires the use of various **show** commands from the CLI of Router1 to answer four multiple-choice questions. This task does **not** require any configuration.

NOTE: The show running-configuration and the show startup-configuration commands have been disabled in this simulation.

To access the multiple-choice questions, click on the numbered boxes on the right of the top panel.

There are 4 multiple-choice questions with this task. Be sure to answer all 4 questions before leaving this item.



R1

```
Press RETURN to get started!
Router1>
```

Question 4

The hosts in the LAN are not able to connect to the Internet. Which commands will correct this issue?

- Router1(conf)# interface fa0/0
Router1(conf-if)# no shutdown
- Router1(conf)# interface fa0/1
Router1(conf-if)# no shutdown
- Router1(conf)# interface s0/0
Router1(conf-if)# no shutdown
- Router1(conf)# interface s0/1
Router1(conf-if)# no shutdown
- Router1(conf)# interface s0/0
Router1(conf-if)# ip address 10.11.12.13 255.255.255.252
- Router1(conf)# interface s0/1
Router1(conf-if)# ip address 10.100.1.1255.255.255.252



The hosts in the LAN are not able to connect to the Internet. Which commands will correct this issue?

- A. Router1(conf)#interface fa0/0 Router1(conf-if)# no shutdown
- B. Router1(conf)#interface fa0/1 Router1(conf-if)# no shutdown
- C. Router1(conf)#interface s0/0 Router1(conf-if)# no shutdown
- D. Router1(conf)#interface s0/1 Router1(conf-if)# no shutdown
- E. Router1(conf)#interface s0/0 Router1(conf-if)# ip address 10.11.12.13 255.255.255.252
- F. Router1(conf)#interface s0/1 Router1(conf-if)# ip address 10.100.1. 1255.255.255.252

Correct Answer: C

User the "show ip interface brief" command From the output, we learn that the status of Serial0/0 interface which connects to ISP router is currently "administratively down". This status indicates this interface is shutting down so we need to turn it on.

```
CiscoTerminal
Press RETURN to get started.

Router1>en
Router1#show ip int brief
Interface          IP-Address      OK? Method Status          Protocol
FastEthernet0/0    unassigned      YES unset    administratively down  down
FastEthernet0/1    192.168.200.23  YES manual    up              up
Serial0/0           10.11.12.13     YES manual    administratively down  down
Serial0/1           unassigned      YES unset    administratively down  down
Router1#
```

QUESTION 2

Which router command can be used to determine the status of Serial 0/0?

- A. show ip route
- B. show interfaces



- C. show s0/0 status
- D. debug s0/0
- E. show run
- F. show version

Correct Answer: B

QUESTION 3

Which definition of a host route is true?

- A. A route that is manually configured
- B. A route used when a destination route is missing.
- C. A route to the exact /32 destination address
- D. Dynamic route learned from the server.

Correct Answer: B

QUESTION 4

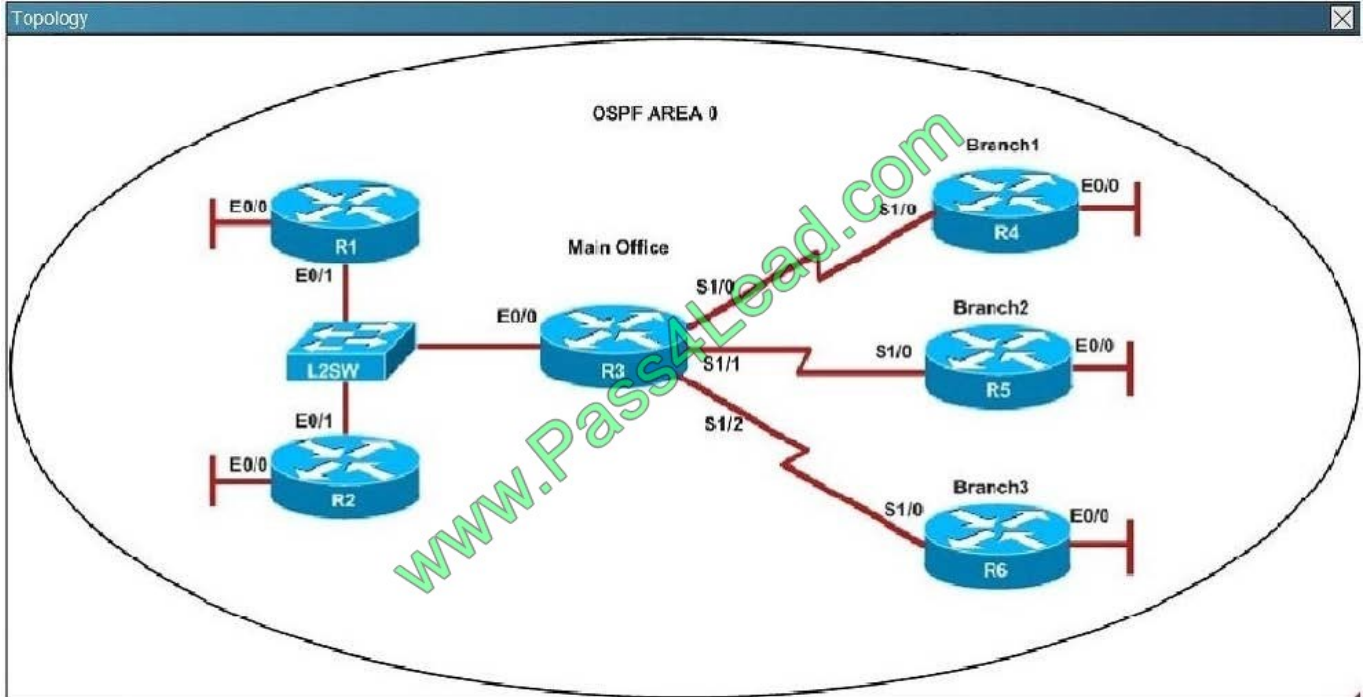
FILL BLANK

What would the router use as metrics when having different routing protocol in the routing table?

Correct Answer: Prefix length

QUESTION 5

Refer to the topology. Your company has decided to connect the main office with three other remote branch offices using point-to-point serial links. You are required to troubleshoot and resolve OSPF neighbor adjacency issues between the main office and the routers located in the remote branch offices.



An OSPF neighbor adjacency is not formed between R3 in the main office and R6 in the Branch3 office. What is causing the problem?

- A. There is an area ID mismatch.
- B. There is a PPP authentication issue; the username is not configured on R3 and R6.
- C. There is an OSPF hello and dead interval mismatch.
- D. The R3 router ID is configured on R6.

Correct Answer: D

Using the show running-config command we see that R6 has been incorrectly configured with the same router ID as R3 under the router OSPF process.



R3	R6
<pre>ip address 10.10.240.5 255.255.255.252 encapsulation ppp ip ospf hello-interval 50 ip ospf 3 area 0 ppp authentication chap serial restart-delay 0 ! interface Serial1/2 description ***Connected to R6-Branch3 office*** ip address 10.10.240.9 255.255.255.252 encapsulation ppp ip ospf 3 area 0 ppp authentication chap serial restart-delay 0 ! interface Serial1/3 no ip address shutdown serial restart-delay 0 ! router ospf 3 router-id 192.168.3.3 ! ip forward-protocol nd ! !</pre>	<pre>no ip address shutdown serial restart-delay 0 ! interface Serial1/2 no ip address shutdown serial restart-delay 0 ! interface Serial1/3 no ip address shutdown serial restart-delay 0 ! router ospf 6 router-id 192.168.3.3 ! ip forward-protocol nd ! ! no ip http server no ip http secure-server ! !</pre>

[Latest 100-105 Dumps](#)

[100-105 Exam Questions](#)

[100-105 Braindumps](#)



To Read the [Whole Q&As](#), please purchase the [Complete Version](#) from [Our website](#).

Try our product !

100% Guaranteed Success

100% Money Back Guarantee

365 Days Free Update

Instant Download After Purchase

24x7 Customer Support

Average 99.9% Success Rate

More than 800,000 Satisfied Customers Worldwide

Multi-Platform capabilities - [Windows](#), [Mac](#), [Android](#), [iPhone](#), [iPod](#), [iPad](#), [Kindle](#)

We provide exam PDF and VCE of Cisco, Microsoft, IBM, CompTIA, Oracle and other IT Certifications. You can view Vendor list of All Certification Exams offered:

<https://www.pass4lead.com/allproducts>

Need Help

Please provide as much detail as possible so we can best assist you.

To update a previously submitted ticket:



 <p>One Year Free Update Free update is available within One Year after your purchase. After One Year, you will get 50% discounts for updating. And we are proud to boast a 24/7 efficient Customer Support system via Email.</p>	 <p>Money Back Guarantee To ensure that you are spending on quality products, we provide 100% money back guarantee for 30 days from the date of purchase.</p>	 <p>Security & Privacy We respect customer privacy. We use McAfee's security service to provide you with utmost security for your personal information & peace of mind.</p>
---	---	--

Any charges made through this site will appear as Global Simulators Limited.

All trademarks are the property of their respective owners.

Copyright © pass4lead, All Rights Reserved.