



156-215.13^{Q&As}

Check Point Certified Security Administrator - GAIa

Pass CheckPoint 156-215.13 Exam with 100% Guarantee

Free Download Real Questions & Answers **PDF** and **VCE** file from:

<https://www.pass4lead.com/156-215-13.html>

100% Passing Guarantee
100% Money Back Assurance

Following Questions and Answers are all new published by CheckPoint Official Exam Center

-  **Instant Download** After Purchase
-  **100% Money Back** Guarantee
-  **365 Days** Free Update
-  **800,000+** Satisfied Customers



**QUESTION 1**

What mechanism does a gateway configured with Identity Awareness and LDAP initially use to communicate with a Windows 2003 or 2008 server?

- A. RCP
- B. LDAP
- C. WMI
- D. CIFS

Correct Answer: C

QUESTION 2

Your company is running Security Management Server R76 on GAIa, which has been migrated through each version starting from Check Point 4.1. How do you add a new administrator account?

- A. Using cpconfig on the Security Management Server, choose Administrators
- B. Using SmartDashboard, under Users, select Add New Administrator
- C. Using the Web console on SecurePlatform under Product configuration, select Administrators
- D. Using SmartDashboard or cpconfig

Correct Answer: B

QUESTION 3

With deployment of SecureClient, you have defined in the policy that you allow traffic only to an encrypted domain. But when your mobile users move outside of your company, they often cannot use SecureClient because they have to register

first (i.e. in Hotel or Conference rooms).

How do you solve this problem?

- A. Allow traffic outside the encrypted domain
- B. Allow your users to turn off SecureClient
- C. Allow for unencrypted traffic
- D. Enable Hot Spot/Hotel Registration

Correct Answer: D



QUESTION 4

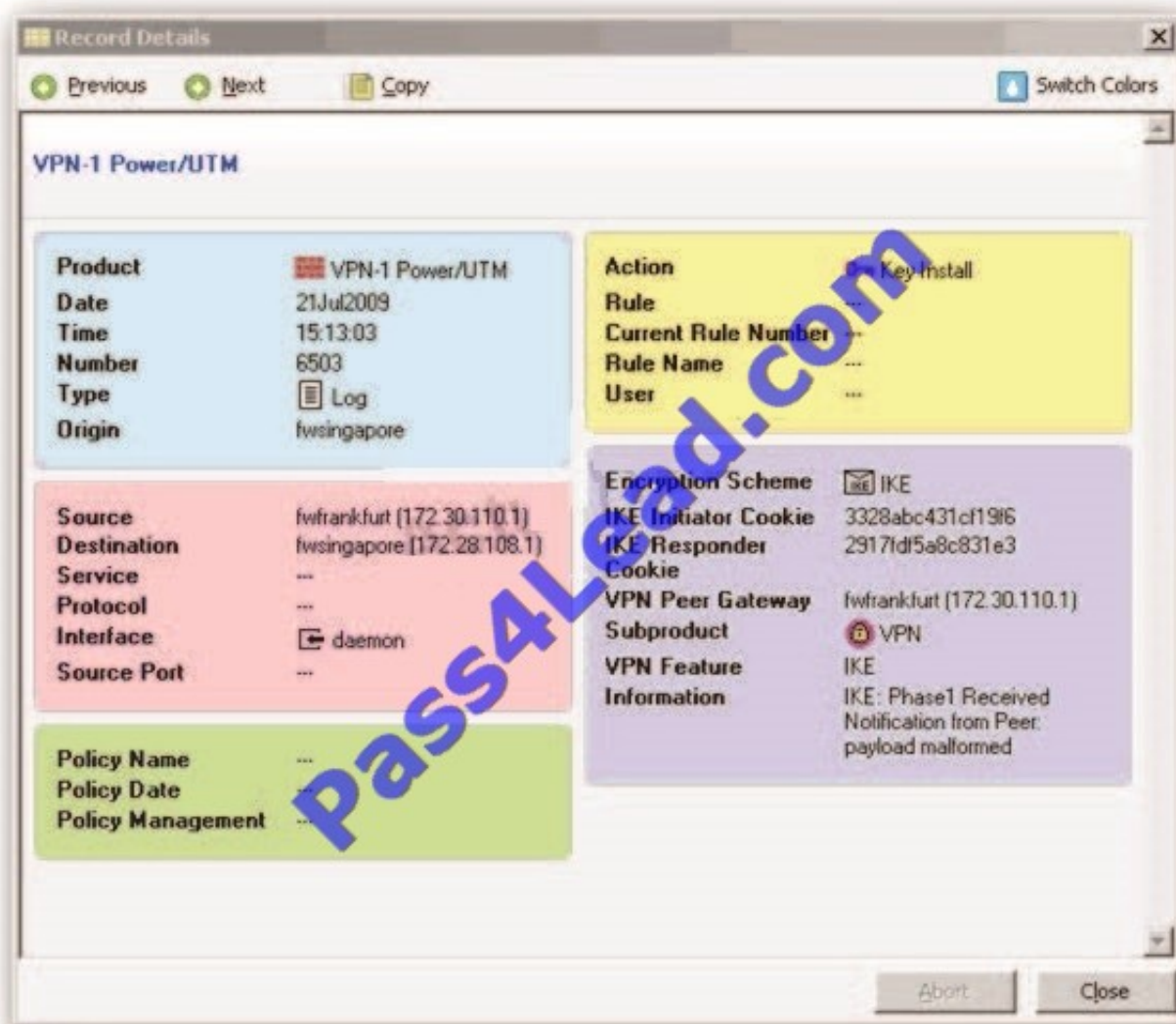
Can you use Captive Portal with HTTPS?

- A. No, it only works with FTP
- B. Yes
- C. No, it only works with FTP and HTTP
- D. No, it only works with HTTP

Correct Answer: B

QUESTION 5

What is a possible reason for the IKE failure shown in this screenshot?





- A. Mismatch in preshared secrets.
- B. Mismatch in Diffie-Hellman group.
- C. Mismatch in VPN Domains.
- D. Mismatch in encryption schemes.

Correct Answer: A

[Latest 156-215.13 Dumps](#)

[156-215.13 PDF Dumps](#)

[156-215.13 VCE Dumps](#)



To Read the [Whole Q&As](#), please purchase the [Complete Version](#) from [Our website](#).

Try our product !

100% Guaranteed Success

100% Money Back Guarantee

365 Days Free Update

Instant Download After Purchase

24x7 Customer Support

Average 99.9% Success Rate

More than 800,000 Satisfied Customers Worldwide

Multi-Platform capabilities - [Windows](#), [Mac](#), [Android](#), [iPhone](#), [iPod](#), [iPad](#), [Kindle](#)

We provide exam PDF and VCE of Cisco, Microsoft, IBM, CompTIA, Oracle and other IT Certifications. You can view Vendor list of All Certification Exams offered:

<https://www.pass4lead.com/allproducts>

Need Help

Please provide as much detail as possible so we can best assist you.

To update a previously submitted ticket:



 <p>One Year Free Update Free update is available within One Year after your purchase. After One Year, you will get 50% discounts for updating. And we are proud to boast a 24/7 efficient Customer Support system via Email.</p>	 <p>Money Back Guarantee To ensure that you are spending on quality products, we provide 100% money back guarantee for 30 days from the date of purchase.</p>	 <p>Security & Privacy We respect customer privacy. We use McAfee's security service to provide you with utmost security for your personal information & peace of mind.</p>
---	---	--

Any charges made through this site will appear as Global Simulators Limited.

All trademarks are the property of their respective owners.

Copyright © pass4lead, All Rights Reserved.