



# 1Z0-554<sup>Q&As</sup>

Oracle Application Development Framework Essentials

## Pass Oracle 1Z0-554 Exam with 100% Guarantee

Free Download Real Questions & Answers **PDF** and **VCE** file from:

<https://www.pass4lead.com/1Z0-554.html>

100% Passing Guarantee  
100% Money Back Assurance

Following Questions and Answers are all new published by Oracle  
Official Exam Center

-  **Instant Download** After Purchase
-  **100% Money Back** Guarantee
-  **365 Days** Free Update
-  **800,000+** Satisfied Customers





### QUESTION 1

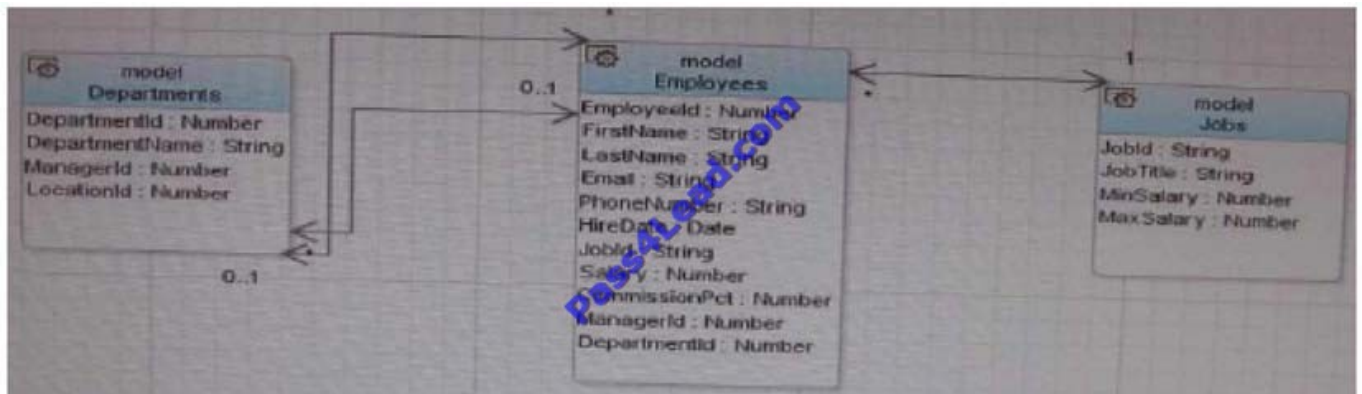
You master (form)/detail (table) page displaying a single order and a table containing the order items on it. If contains navigation to move from one order to another order what three bindings types would you find in the page definition file?

- A. attributeValue, action, table
- B. attributeValue, action, tree
- C. attributeValue, button, table
- D. attributeValue, button, tree
- E. attributeValue, action, list
- F. attributeValue, button, list

Correct Answer: C

### QUESTION 2

Consider the business component entity objects included in the following diagram:



How would you create view objects to retrieve a form of jobs and table of Employees for each job?

- A. Create a read-only view object based on the query `SELECT Employees.FIRST_NAME, Employees.LAST_NAME, Jobs.JOB_TITLE from EMPLOYEES Employees, JOBS Jobs WHERE Employees.JOB_ID=Jobs.JOB_ID`.
- B. Create a view object based on the Employees and Jobs entity objects and define the join type and association used to reference the Jobs entity.
- C. Create a default view object based on the Employees entity object and a default view object based on the Jobs entity object, and create a view link between the two view objects.
- D. Create a view object based on the query `SELECT Employees.FIRST_NAME, Employees.LAST_NAME, Jobs.JOB_TITLE from EMPLOYEES Employees, JOBS Jobs WHERE Employees.JOB_TXTLE=Jobs.JOB_TITLE`.



E. Create a default view object based on the Employees entity object and a default view object based on the Jobs entity object. In the Employees view object, create a view accessor that references the Jobs view object.

Correct Answer: A

Reference: [http://docs.oracle.com/cd/E12839\\_01/web.1111/b31974/bcadvvo.htm](http://docs.oracle.com/cd/E12839_01/web.1111/b31974/bcadvvo.htm)

---

### QUESTION 3

When granting a user or role access to a group of pages, it is best practice to grant that access to what type of file or component?

- A. Page definition file
- B. Bounded task flow including the page(s)
- C. Unbounded task flow including the page(s)
- D. .jspx file
- E. Entity objects included in the UI

Correct Answer: A

Reference:

[http://download.oracle.com/docs/cd/E12839\\_01/web.1111/b31974/adding\\_security.htm](http://download.oracle.com/docs/cd/E12839_01/web.1111/b31974/adding_security.htm)(Topic 29.1; bullet point 1)

---

### QUESTION 4

You have an ADF Faces page that contains various input fields and a command button. The command button has the partial submit property set to true. For this page, when the button is clicked which two statements are true?

- A. Only UI components whose values have been changed will be refreshed.
- B. Only the UI panel in which the button exists will have its content refreshed.
- C. The page will refresh all UI components that have the partialSubmit property set to true.
- D. The page is submitted and only components, whose partialTriggers property references the button, will be refreshed.
- E. The page is submitted, and any components that have the same binding executable as the button and have changeEventPolicy set to PPR, are refreshed.

Correct Answer: BC

Reference: [http://jdevadf.oracle.com/adf-richclient-demo/docs/tagdoc/af\\_commandButton.html](http://jdevadf.oracle.com/adf-richclient-demo/docs/tagdoc/af_commandButton.html)

---

### QUESTION 5

Which three statements are true about managed bean usage within task flows?



- A. A managed bean can be used within a task flow router activity to evaluate a navigation case.
- B. You must explicitly instantiate a managed bean before using it.
- C. Managed beans are only available in bounded task flows.
- D. Common task flow actions can be placed in a managed bean within a task flow template.
- E. A task flow parameter can reference a managed bean.
- F. A managed bean always remains in scope while the task flow within which it is used is active.

Correct Answer: DEF

Reference: <http://prasanna-adf.blogspot.com/2008/02/managed-bean.html>

[Latest 1Z0-554 Dumps](#)

[1Z0-554 VCE Dumps](#)

[1Z0-554 Practice Test](#)



To Read the [Whole Q&As](#), please purchase the [Complete Version](#) from [Our website](#).

## Try our product !

100% Guaranteed Success

100% Money Back Guarantee

365 Days Free Update

Instant Download After Purchase

24x7 Customer Support

Average 99.9% Success Rate

More than 800,000 Satisfied Customers Worldwide

Multi-Platform capabilities - [Windows](#), [Mac](#), [Android](#), [iPhone](#), [iPod](#), [iPad](#), [Kindle](#)

We provide exam PDF and VCE of Cisco, Microsoft, IBM, CompTIA, Oracle and other IT Certifications. You can view Vendor list of All Certification Exams offered:

<https://www.pass4lead.com/allproducts>

## Need Help

Please provide as much detail as possible so we can best assist you.

To update a previously submitted ticket:



 <p><b>One Year Free Update</b> Free update is available within One Year after your purchase. After One Year, you will get 50% discounts for updating. And we are proud to boast a 24/7 efficient Customer Support system via Email.</p>	 <p><b>Money Back Guarantee</b> To ensure that you are spending on quality products, we provide 100% money back guarantee for 30 days from the date of purchase.</p>	 <p><b>Security &amp; Privacy</b> We respect customer privacy. We use McAfee's security service to provide you with utmost security for your personal information &amp; peace of mind.</p>
---	---	--

Any charges made through this site will appear as Global Simulators Limited.

All trademarks are the property of their respective owners.

Copyright © pass4lead, All Rights Reserved.