

1Z0-567^{Q&As}

Primavera P6 Enterprise Project Portfolio Management 8 Essentials

Pass Oracle 1Z0-567 Exam with 100% Guarantee

Free Download Real Questions & Answers **PDF** and **VCE** file from:

<https://www.pass2lead.com/1z0-567.html>

100% Passing Guarantee
100% Money Back Assurance

Following Questions and Answers are all new published by Oracle
Official Exam Center

- ⚙️ **Instant Download** After Purchase
- ⚙️ **100% Money Back** Guarantee
- ⚙️ **365 Days** Free Update
- ⚙️ **800,000+** Satisfied Customers



QUESTION 1

What is the process that must be followed by a system administrator to create a user?

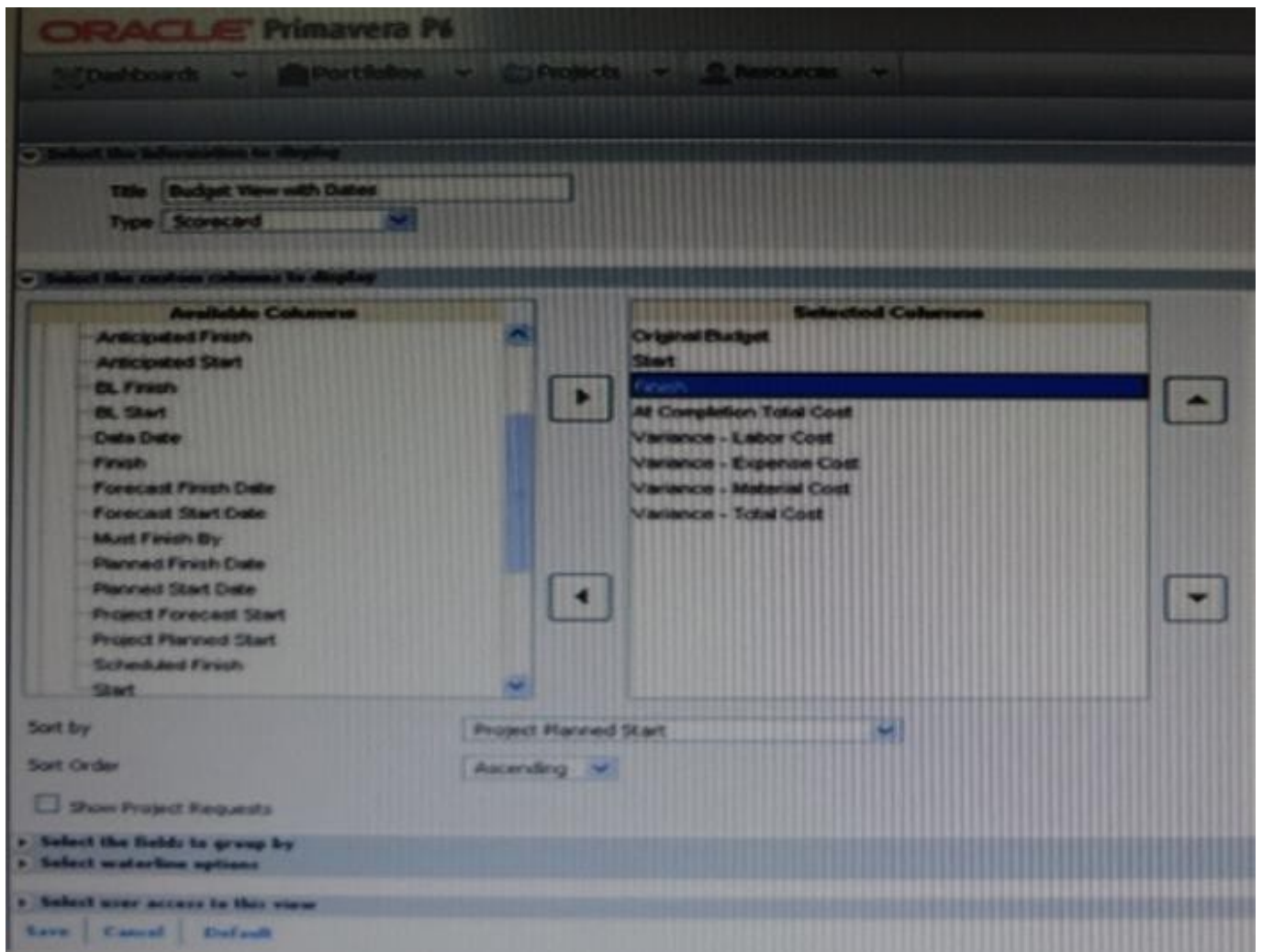
- A. Create an email account to confirm access after user setup.
- B. Assign a global profile, project profile, and responsible manager.
- C. Request approval from the user's manager before completing the profile.
- D. Assign a role to the user before assigning security profiles.

Correct Answer: B

Explanation:

QUESTION 2

Identify this window.



- A. Create Dashboard
- B. Create Portfolio
- C. Create Portfolio view
- D. Group and Sort

Correct Answer: C

Explanation:

One idea behind Portfolio Analysis in P6 is that it gives you the ability to quickly make ad-hoc reports. You can quickly change the view and alter what data is

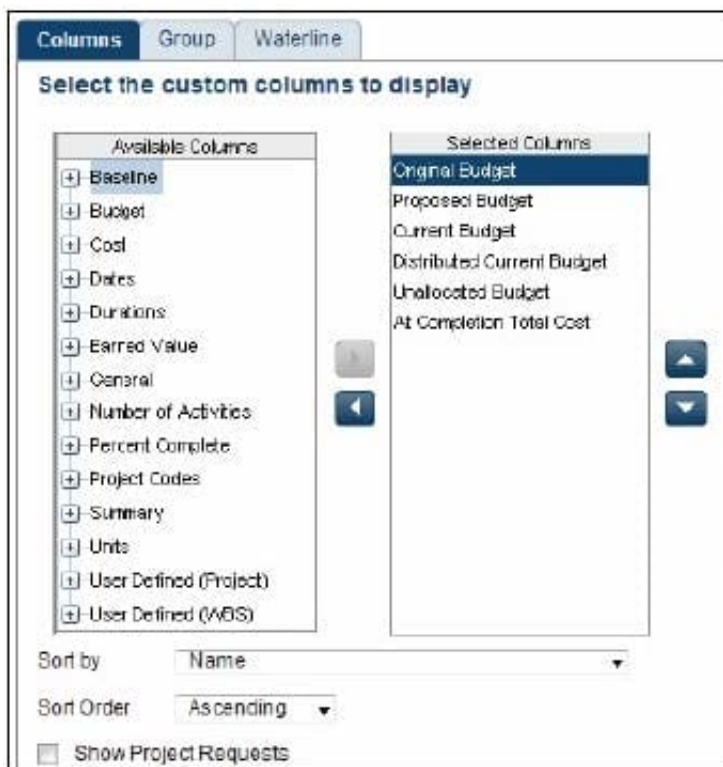
displayed and in what form. There are two main kinds of views -- scorecards and graphs.

Note: In the context of creating a scorecard:

Choosing data to display

There are three areas that you can customize on a scorecard: Columns, Group, and Waterline.

Screenshot (compare to screenshot in the question):



Columns The columns available are a mixture of Project-level data as well as WBS-level data. You can choose any of these columns on the left-hand side and press the right-arrow to move them to the Selected Columns. On the right-hand side you may re-order the columns by selecting them and using the up and down arrows. You can choose the default sorting of the data as well. Once on the scorecard screen, you can change the order by simply clicking on the column headers. The option Show Project Requests determines whether potential projects should also be included in the scorecard.

QUESTION 3

You are an implementation consultant responding to the requirement that a cost account structure be set up in Primavera to be able to receive actual costs incurred by each contributing organization. There is also a cost account structure set up in the customer's financial management system (FMS).

What would be the easiest long-term recommendation for setup and maintenance of the cost account structure?

- A. Set up a cost account structure in Primavera that mirrors the FMS, and manually manage changes.
- B. Set up a cost account structure in Primavera and a global project code to map to FMS for Integration.
- C. Do not set up the cost account structure, and receive costed actuals only from the FMS.
- D. Set up integration between Primavera and the FMS to maintain all ongoing costing data.

Correct Answer: C

Explanation:

It refers to the existence, in the structure, to the cost account structure for FMS.

Integrate Primavera P6 EPPM with the Financial Management system.

QUESTION 4

What is the significance of the "Summarize project based on detailed activity resource assignments" setting?

- A. Summarized project data will reflect top-down plans.
- B. Summarized project data will reflect bottom-up plans.
- C. Summarized project data will reflect integrated actuals.
- D. Summarized project data will be monetized.

Correct Answer: B

Explanation:

Use the Detail Activity Resource Assignments option for in-progress projects when you want to review detailed activity-level summarized data, for example, for

earned value reporting.

Note: `Summarize Project Based on` determines whether the Summarizer calculates and displays rolled-up data based on resource assignments at the activity or

project level. Note 2: You can summarize project data to a specific WBS level when calculating and maintaining summary data.

Summarized Data <input type="checkbox"/> Contains Summarized Data Only Last Summarized On Nov-12-04 15:29 Summarize to WBS Level 2 Summarize project based on <input type="radio"/> High level resource planning <input checked="" type="radio"/> Detail activity resource assignments	Project Settings Character for separating code fields for the WBS tree Fiscal year begins on the 1st day of January Baseline for earned value calculations <input checked="" type="radio"/> Project baseline <input type="radio"/> User's primary baseline Define Critical Activities <input checked="" type="radio"/> Total Float less than or equal to 0.00d <input type="radio"/> Longest Path
---	---

QUESTION 5

Your customer's project managers are at a very low level of skill/maturity. Your scope of work includes the creation and management of schedule standards, usage of work products and documents, and schedule-variance tracking to improve estimation processes. Work out of scope includes risk and issue management. You have decided to modify a user-interface view for the project managers. Where do you remove access to risk and issue management?

- A. Remove the Risks and Issues portlets from dashboards.
- B. Remove Risk and Issues from the global security profile.
- C. Remove Risk and Issues from the Protects section.
- D. Remove Risk and Issues licenses.

Correct Answer: A

Explanation:

We remove these two specific portlets (Risk, Issues) for the Dashboards which are used by the Project Managers.

Note:

*

Dashboards are created with up to 12 windows of data called Portlets

*

Dashboards build upon those analysis tools and present project and portfolio information in a way that is easy to set up and use. These dashboards can be customized and assigned so that specific users or groups of users can see the same information when they log into the system. Dashboards can be configured to suit individual needs or literally get everyone on the same page.

[Latest 1Z0-567 Dumps](#)

[1Z0-567 PDF Dumps](#)

[1Z0-567 Braindumps](#)