



1Y0-301^{Q&As}

Deploying Citrix XenDesktop 7.6 Solutions

Pass Citrix 1Y0-301 Exam with 100% Guarantee

Free Download Real Questions & Answers **PDF** and **VCE** file from:

<https://www.pass4lead.com/1y0-301.html>

100% Passing Guarantee
100% Money Back Assurance

Following Questions and Answers are all new published by Citrix
Official Exam Center

-  **Instant Download** After Purchase
-  **100% Money Back** Guarantee
-  **365 Days** Free Update
-  **800,000+** Satisfied Customers





QUESTION 1

Which two pieces of information are required when using Citrix Studio to connect a Delivery Controller to a hosting infrastructure? (Choose two.)

- A. Hypervisor address
- B. Hypervisor credentials
- C. Hypervisor management VLAN
- D. Hypervisor high-availability server address

Correct Answer: CD

QUESTION 2

CORRECT TEXT

Scenario: Provisioning Services has been installed to facilitate the deployment of Windows 8 desktops and web servers. A Citrix Engineer is instructed to provision web servers using the Web_Server vDisk. The engineer needs to create a target device and add the device to Active Directory.

The following pieces of information have been provided:

Server name: CCHWebServer

IP address: 192.168.10.115

MAC address: fa:49:fd:63:7b:be

The machine account password for the new server in Active Directory needs to be changed every seven days. As the Citrix Engineer, use the existing site, store, and device collection to implement the tasks below.

Tasks:

1.
Create a target device named CCHWebServer.
2.
Assign the Web_Server vDisk to the newly created target device.
3.
Enable AD account password management on the vDisk.
4.
Enable automatic password support in the properties of the current server.



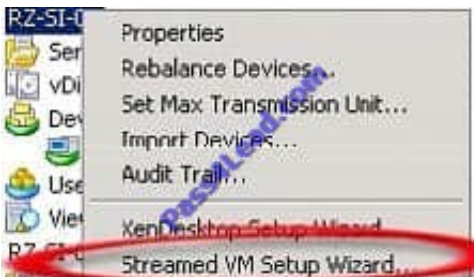
5.
Create a machine account in AD for the target device and place the machine account in the Web Server OU.



A.
Correct Answer: A

Answer: Find the solution with all steps below.

The wizard is run directly from a Provisioning Services Console. Right-click on the Site icon in the Console tree panel, then select the Streamed VM Setup Wizard... menu option. The Welcome to the Streamed VM Setup Wizard appears.



Click Next to begin the setup.

Select the type of hypervisor (Xenserver per the Simulation) to connect to, then enter the required connection credentials.

The hypervisor information for the environment is:

- XenServer IP Address: 192.168.10.5
- Username: root
- Password: Password1



Click Next to verify the connection.

Note: For convenient reuse, the most recently used hypervisor and username will be cached in the registry of the local machine running this instance of the Console. Note: XenServer 5.5 Update 2 hypervisors are not supported in the 5.6.1

Streamed VM Setup Wizard. System Center Virtual Machine Management (SCVMM) servers require PowerShell 2.0 to be installed.

Optional. On the Hypervisor cluster screen, select the hypervisor host or cluster to host the VMs, then click Next.

Select one VM template from the specified host, then click Next. On the Collection and vDisk page, select the collection in which to add VMs. Select a single shared vDisk within to assign to VMs within that collection, then click Next.

Web_Server vDisk

uk.co.certification.simulator.questionpool.PList@1669be70

Set the number of VMs to create, the number of vCPUs, and the amount of Memory each new virtual machine will use.

1 VM per the Simulation- CCHWebServer

Enable the radio button next to one of the following methods used for adding Active Directory computer accounts, then click Next:

Note: An Active Directory administrator will need to delegate rights to the Provisioning Services Console user to allow Active Directory account creation. Note: The domain and OU default to those of the current user. Note: New computer

names to be created are first validated that they do not already exist as computers in Active Directory, VMs, or target devices.

If the Create new accounts method is selected:

Use ?Web Server OU

uk.co.certification.simulator.questionpool.PList@16970c10 Review all configuration settings, and then click Next to confirm and finish configurations.

Note: Clicking Cancel cancels the configuration of any additional machines, and the quantity of successfully configured machines displays under the Progress bar. If the wizard fails or is cancelled in the middle of an operation, any progress

made is retained. If cleanup of existing progress is required, it must be done manually, which includes removing the following:

uk.co.certification.simulator.questionpool.PList@16970da0

QUESTION 3

Scenario: A Citrix Engineer needs to enable Active Directory Machine Account Password Management in a XenDesktop environment where Provisioning Services is used. The target devices belong to the same Active Directory domain and are assigned a vDisk in Standard mode.

Which three Active Directory permissions are required to enable Active Directory Machine Account Password Management in this environment? (Choose three.)

A. Move



- B. Reset
- C. Delete
- D. Create
- E. Rename

Correct Answer: BCD

QUESTION 4

CORRECT TEXT

Scenario: A Citrix Engineer must provide students in the Cardiology program at CCH with Windows 8 virtual desktops. These students will use hosted applications through Receiver. Personalization of the Windows 8 virtual desktops is NOT

required.

Tasks:

1.
Create the appropriate machine catalog and name it XD_POOLED 1.
2.
Create 10 virtual desktops for students in the Cardiology program.
3.
Ensure each virtual desktop is assigned 2 Virtual CPUs.
4.
Set the memory size for the virtual desktops to 8 GB.
5.
Use the Network 0 network interface card.
6.
Create Active Directory computer accounts for the virtual desktops in the CCH Virtual Desktops organizational unit (OU).
7.
Use the following account naming scheme for the virtual desktops: TrainingDesk001 ?TrainingDesk010.
8.
Create the virtual desktops from the WDK_8_1 master image.



9.

Create the appropriate Delivery Group named CCH_Training_Desktops, and configure it according to the requirements above. Students in the Cardiology program are members of the Training Desktops user group.



A.

Correct Answer: A

Answer: Find the solution with all steps below. XenDesktop 7 Machine Catalog

1.

In Desktop Studio we want to create a VM catalog,

2.

Choose the OS type



CITRIX

Full Deployment | Actions | PowerShell

Full Deployment

Follow these steps to set up and deploy your virtual desktop infrastructure.

1 Site configuration complete Test Site

2 Create Catalog Test Catalog

Operating System and Hardware

We want to help you create the correct type of Machine Catalog by asking a few questions to provide a recommendation

[Learn more](#)

Select an operating system and machine type for this Machine Catalog.

- Windows Desktop OS**
The Desktop OS Machine Catalog provides VDI desktops ideal for a variety of different users.
- Windows Server OS**
The Server OS Machine Catalog provides hosted shared desktops for a large-scale deployment of standardized machines.
- Remote PC Access**
The Remote PC Access Machine Catalog provides users with remote access to their physical office desktops, allowing them to work at any time.

3. We will be using VMs and Citrix Machine Creation Services, so the defaults are fine.



Machine Management

As part of creating a Machine Catalog, the way you plan to provision machines influences the recommended Machine Catalog type.

[Learn more](#)

This infrastructure will be built using:

- Virtual machines
- Physical hardware

Desktop images are managed using:

- Machine Creation Services (MCS)
- Provisioning Services (PVS)
- Another service or technology
I will manage my desktop images with something other than Citrix technology. I have existing Master Images already prepared.

4.

Use the default

5.

Choose the master image WDK_8_1 master image

6.

A great feature of XenDesktop is the ability to customize the catalog hardware at provisioning time, so you can offer different tiers of VMs from the exact same master image. No need to build up templates with the same OS and software stack, just to customize the vCPUs and memory specs.

7.

OU ?

C:\Users\Chaudhry\Desktop\1.jpg

8.

On the summary screen you need to give the catalog a name and a description.

9.

After you kick off the provisioning process you get a nice status. MCS first makes a copy of your master VM, then does its magic to create copies

10.

When the provisioning is completed you now have one machine catalog entry



11.

If you double click on the machine catalog it will bring up a search window with the individual VMs listed. You can now power them on and wait for them to show a "registered" status. If you click on an individual VM it will pull up even more details. If a user had an active session to the VM then you get a plethora more data.

Desktop Experience

Consider the tasks your users perform and then decide which desktop experience would be best.

Which desktop experience do you want users to have?

- I want users to connect to a new (random) desktop each time they log on.
- I want users to connect to the same (static) desktop each time they log on.

Do you want to save any changes that the user makes to the desktop?

- Yes, save changes on a separate Personal vDisk.
- Yes, create a dedicated virtual machine and save changes on the local disk.
- No, discard all changes and clear virtual desktops when the user logs off.
If configured, folder redirection will not be affected.

Master Image

Select a Host and corresponding Virtual Machine or snapshot from the list to create a Master Image.

Select a Resource:

VDI

Select a snapshot (or a Virtual Machine):



The Master Image is built using Windows XP or Windows Vista

You should also select this option if the snapshot or Master Image is running Windows 7 with VDA 5.6



Virtual Machines

Number of virtual ma: 2

Make this 10

Configure your machines:

Name:	D001-Win702
Virtual CPUs:	1
Memory (MB):	2048
Hard disk (GB):	26

Make this 2

Make this 8192 MB to allot 8 GB Memory

Pass4Lead.com

CCH Virtual Desktops

Machine Names -

TrainingDesk001 - TrainingDesk010

Active Directory Computer Accounts

Each machine in a Machine Catalog needs a corresponding Active Directory computer account.

Learn more

Select an Active Directory account option:

- Create new Active Directory accounts
- Use existing Active Directory accounts

Active Directory location for computer accounts:

Domain: contoso.net

- Computers
- Member Servers
- VDI**
- Managed Service Accounts

Selected location: OU=VDI,OU=Computers,OU=San Diego,OU=Sites,DC=contoso,DC=net

Account naming scheme:

VDI-NS-W7-## 0-9

VDI-NS-W7-01



Summary

Machine type:	Windows Desktop OS
Machine management:	Virtual
Provisioning method:	Machine creation services (MCS)
Desktop experience:	Users connect to a new desktop each time they log on
Resources:	VDI
Master Image name:	D001-W... A snapshot
Number of VMs to create:	2
Virtual CPUs:	1

Machine Catalog name:

Machine Catalog description for administrators: (Optional)

Note: To complete the deployment, assign this machine catalog to a Delivery Group by selecting Delivery Groups and then Create or Edit a Delivery Group.

Change this per the Simulation to XD_POOLED1

Studio

Creating Catalog Windows 7 x64 - 1 vCPU 2GB...

Copying the master image.



CITRIX

Machine Catalog	Machine type	No. of machines	Allocated machines
Windows 7 x64 - vCPU 2GB Allocation Type: Random	Windows Desktop OS (Virtual) User data: Discard	2	0

Provisioning method: Machine creation services

Details - Windows 7 x64 - vCPU 2GB

Details Machines Administrators

Machine Catalog	Machine
Name: Windows 7 x64 - vCPU 2GB	Disk Image: Citrix_XD_Windows 7 x64 - vCPU 2GB
Machine Type: Windows Desktop OS (Virtual)	Virtual CPUs: 1
Provisioning Method: Machine creation services	Memory: 2048 MB
Allocation Type: Random	Hard disk: 26 GB
Resources: VDI	VDA version: 7.0.0.3018
Scopes: All	Operating System: Windows 7 Service Pack 1

CITRIX <Unsaved> Saved searches

Search results for '(Machine Catalog Is "Windows 7 x64 - vCPU 2GB")'

Name	Machine Catalog	Delivery Gro...	User	Maintenanc...	Persist User...	Power State	Registration...
VDI-NS-W7-01.contoso.net	Windows 7 x6...	-	-	Off	Discard	On	Registered
VDI-NS-W7-02.contoso.net	Windows 7 x6...	-	-	Off	Discard	On	Registered

Details - VDI-NS-W7-01.contoso.net

Details Administrators

Machine	Session
Machine: VDI-NS-W7-01.contoso.net	Current User: -
Power State: On	Protocol: -
Registration: Registered	Session type: Desktop
Delivery Group: -	Time in State: -
Machine Catalog: Windows 7 x64 - vCPU 2GB	Client Name: -
Connection: vSphere51	Client Address: -
IP Address: -	Launched Via IP: -
Agent Version: 7.0.0.3018	Connected Via: -
Profile Definition: -	
StoreFronts: -	

As you can see, creating a machine catalog from a master template is quick and easy. Within Desktop Studio you can view a tremendous amount of detail about the catalog and individual VMs.

QUESTION 5

Which Virtual Disk Storage type should a Citrix Engineer configure for shared storage with XenServer when using a Fibre Channel SAN?

A. NFS VHD



- B. Software iSCSI
- C. Hardware HBA
- D. Windows File Sharing (CIFS)

Correct Answer: C

[1Y0-301 PDF Dumps](#)

[1Y0-301 Exam Questions](#)

[1Y0-301 Braindumps](#)



To Read the [Whole Q&As](#), please purchase the [Complete Version](#) from [Our website](#).

Try our product !

100% Guaranteed Success

100% Money Back Guarantee

365 Days Free Update

Instant Download After Purchase

24x7 Customer Support

Average 99.9% Success Rate

More than 800,000 Satisfied Customers Worldwide

Multi-Platform capabilities - [Windows](#), [Mac](#), [Android](#), [iPhone](#), [iPod](#), [iPad](#), [Kindle](#)

We provide exam PDF and VCE of Cisco, Microsoft, IBM, CompTIA, Oracle and other IT Certifications. You can view Vendor list of All Certification Exams offered:

<https://www.pass4lead.com/allproducts>

Need Help

Please provide as much detail as possible so we can best assist you.

To update a previously submitted ticket:



 <p>One Year Free Update Free update is available within One Year after your purchase. After One Year, you will get 50% discounts for updating. And we are proud to boast a 24/7 efficient Customer Support system via Email.</p>	 <p>Money Back Guarantee To ensure that you are spending on quality products, we provide 100% money back guarantee for 30 days from the date of purchase.</p>	 <p>Security & Privacy We respect customer privacy. We use McAfee's security service to provide you with utmost security for your personal information & peace of mind.</p>
---	---	--

Any charges made through this site will appear as Global Simulators Limited.

All trademarks are the property of their respective owners.

Copyright © pass4lead, All Rights Reserved.