

1Z0-632^{Q&As}

PeopleSoft PeopleTools 8.5x Implementation Essentials

Pass Oracle 1Z0-632 Exam with 100% Guarantee

Free Download Real Questions & Answers **PDF** and **VCE** file from:

<https://www.pass2lead.com/1z0-632.html>

100% Passing Guarantee
100% Money Back Assurance

Following Questions and Answers are all new published by Oracle
Official Exam Center

- ⚙️ **Instant Download** After Purchase
- ⚙️ **100% Money Back** Guarantee
- ⚙️ **365 Days** Free Update
- ⚙️ **800,000+** Satisfied Customers



QUESTION 1

Consider the following three scenarios and six tools or techniques. For each scenario, identify the most appropriate tool or technique for updating the portal registry.

Scenarios:

- S1. Create new content reference (CREF) definitions for three new fluid
- S2. Update node and security settings for 10 menu folders containing c
- S3. Create tile definitions from three existing classic components.

Tools:

- T1. Programmatically with PeopleCode
- T2. Using the CREF Wizard
- T3. Using a component interface
- T4. Manually in the Structure and Content component
- T5. Using the Registration Wizard
- T6. Programmatically with SQR

- A. S1-T2, S2-T1, S3-T3
- B. S1-T2, S2-T6, S3-T4
- C. S1-T5, S2-T4, S3-T3
- D. S1-T5, S2-T3, S3-T4
- E. S1-T5, S2-T1, S3-T4

Correct Answer: D

QUESTION 2

Identify two types of tables used in the PeopleSoft feature named TableSet Sharing. (Choose two.)

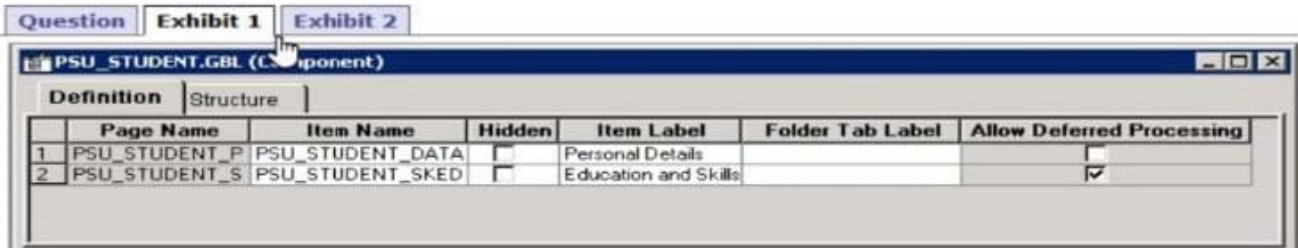
- A. Cluster tables
- B. Temporary tables
- C. Transparent tables
- D. Transaction tables
- E. Audit tables
- F. Control tables

Correct Answer: DF

Reference: https://docs.oracle.com/cd/E29376_01/hracs90r5/eng/psbooks/lfn/chapter.htm?File=lfn/htm/lfn03.htm

QUESTION 3

View the exhibits.



Professional Details

Student ID 2924

*Student Name

*Customer Friends-Little Egg Lighthouse

Project Role

Same address as Customer Telephone

Street

City

Country United States

State New Jersey

Zip Code

Student Emphasis

Functional

Technical

[Personal Details](#) | [Education and Skills](#)

You just added a second page to the student component as shown in Exhibit 1. When you test the page as shown in Exhibit 2, no tabs are displayed. What do you need to do to display the tabs?

- A. On the Internet tab of the Component Properties dialog box, select the Display Hyperlinks check box
- B. On the Internet tab of the Component Properties dialog box, select the Display Folder Tabs check box
- C. Enter the labels for the folder tab labels and on the Use tab of the Component Properties dialog box, select the Include in Navigation check box
- D. On the Use tab of the Component Properties dialog box, select the Include in Navigation check box
- E. Enter the labels for the folder tab labels

Correct Answer: A

Reference: https://docs.oracle.com/cd/E41633_01/pt853pbh1/eng/pt/tapd/task_SettingComponentProperties-0774bd.html

QUESTION 4

Which three statements are correct? (Choose three.)

- A. Derived/work fields and variables can be displayed on the page
- B. Derived/work fields and variables provide temporary storage of calculated values
- C. Derived/work fields and record fields provide permanent storage of values
- D. Derived/work fields and record fields can be displayed on the page
- E. Derived/work fields and record fields can include executable PeopleCode programs

Correct Answer: ADE

QUESTION 5

An end user saves the data after making a change to their personal address, and the system updates the table for that page. In this case, that personal address information is also stored in a table used to generate reports. Upon saving the address, the system also updates the equivalent information stored in the reporting table. What form of maintaining referential integrity has been implemented in this scenario?

- A. Parent-child relationship
- B. Occurs level
- C. Prompt table edit
- D. PeopleCode running a SQLExec statement
- E. Expert entry

Correct Answer: C

[1Z0-632 Study Guide](#)

[1Z0-632 Exam Questions](#)

[1Z0-632 Braindumps](#)