



200-601 Q&As

Managing Industrial Networks for Manufacturing with Cisco Technologies

Pass Cisco 200-601 Exam with 100% Guarantee

Free Download Real Questions & Answers **PDF** and **VCE** file from:

<https://www.pass4lead.com/200-601.html>

100% Passing Guarantee
100% Money Back Assurance

Following Questions and Answers are all new published by Cisco Official Exam Center

-  **Instant Download** After Purchase
-  **100% Money Back** Guarantee
-  **365 Days** Free Update
-  **800,000+** Satisfied Customers



**QUESTION 1**

Exhibit:



Which two statements are correct for a safe wiring installation to the terminal block of the switch or endpoint? (Choose two.)

- A. Insert a green ground wire into the terminal block that is marked RT for return.
- B. Verify that DC power is live and within 24 VDC voltage range before starting wiring.
- C. Verify that the DC power circuit includes an overcurrent protective device that limits the DC current to 5 A.
- D. Because this is a low-voltage DC circuit, anyone can install this wiring without electrical training or qualifications.
- E. Connect the positive 24 VDC conductor to the V terminal and connect the negative 24 VDC return wire to the RT terminal.
- F. A ground wire can optionally be connected to the screw terminal on the front of the switch.

Correct Answer: CE

QUESTION 2

Which configuration enables an Industrial Ethernet switch to participate in PTP clock selection and sets the priority value that would break the tie between switches with matching default criteria to 50?

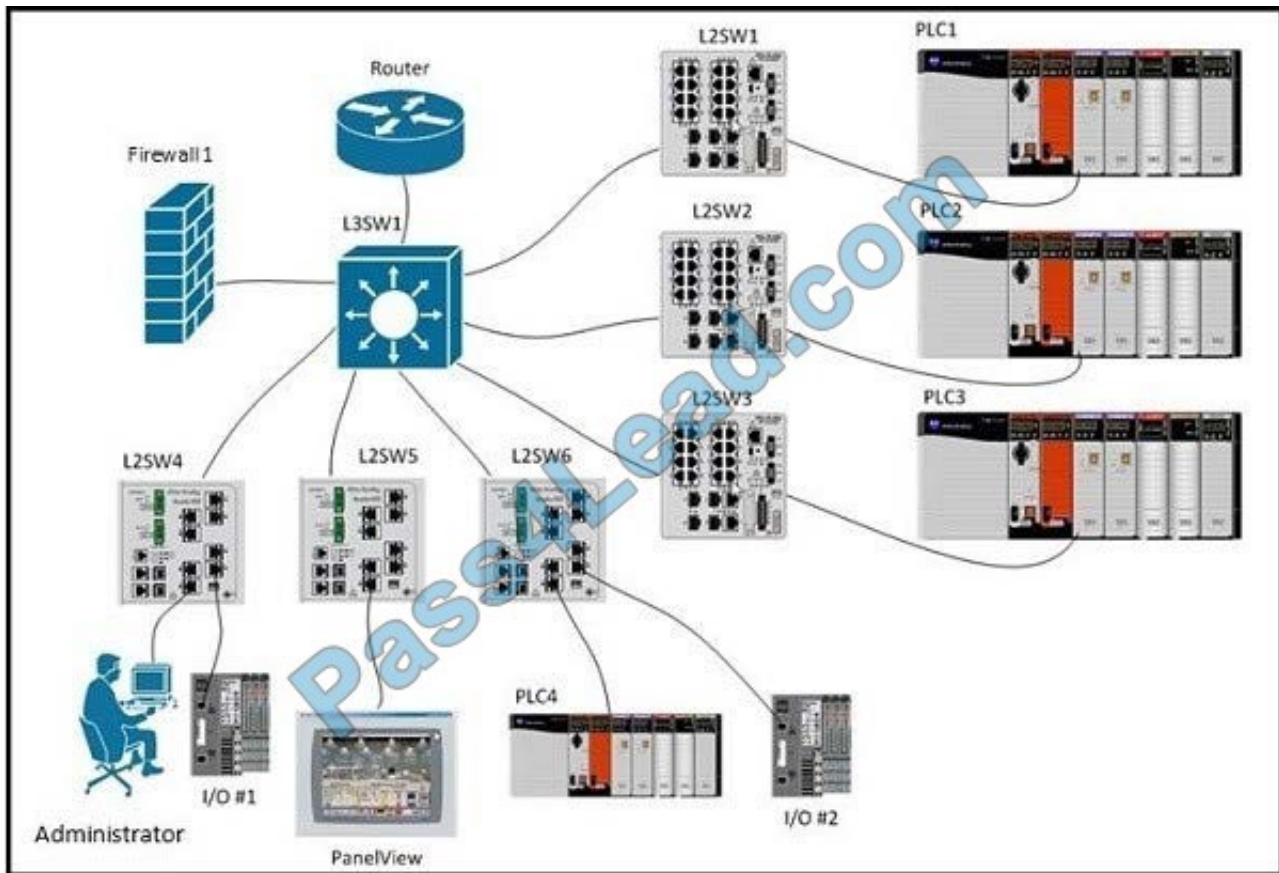
- A. `ptp mode boundary ptp priority1 10 ptp priority2 50`
- B. `ptp mode boundary ptp priority1 50 ptp priority2 10`
- C. `ptp mode e2transparent ptp priority1 50 ptp priority2 10`
- D. `ptp mode e2transparent ptp priority1 10 ptp priority2 50`

Correct Answer: A

QUESTION 3



Refer to the exhibit.



A new device, PanelView, has been added to the network. See the table for device details:

All devices are able to ping their default gateway and all other devices except PanelView.

PanelView can only ping its default gateway.

After the administrator has done some investigation they have discovered the following information:

```
L3SW1# show run interface
```

```
interface Vlan1
```

```
no ip address
```

```
shutdown
```

```
!
```

```
interface Vlan191
```

```
ip address 10.10.27.125 255.255.255.192
```

```
ip helper-address 165.28.96.96
```

```
ip helper-address 165.28.32.235
```



no ip redirects

standby 191 ip 10.10.27.126

```
standby 191 priority 120 standby 191 preempt delay minimum 90 no ip route-cache ! interface Vlan398 ip vrf forwarding mosaic ip address 10.15.153.203 255.255.255.0 ip helper-address 10.15.154.252 ip helper-address 10.1.0.252 standby 98 ip 10.15.153.202 standby 98 priority 120 standby 98 preempt delay minimum 90 ! interface Vlan399 ip vrf forwarding mosaic ip address 10.15.154.203 255.255.255.0 ip helper-address 10.1.0.252 ip helper-address 10.1.1.252 standby 99 ip 10.15.154.254 standby 99 priority 120 standby 99 preempt delay minimum 90 ! L3SW1# show ip route connected 10.0.0.0/8 is variably subnetted, 1149 subnets, 17 masks C 10.10.27.64/26 is directly connected, Vlan191 C 10.10.31.254/32 is directly connected, Loopback1
```

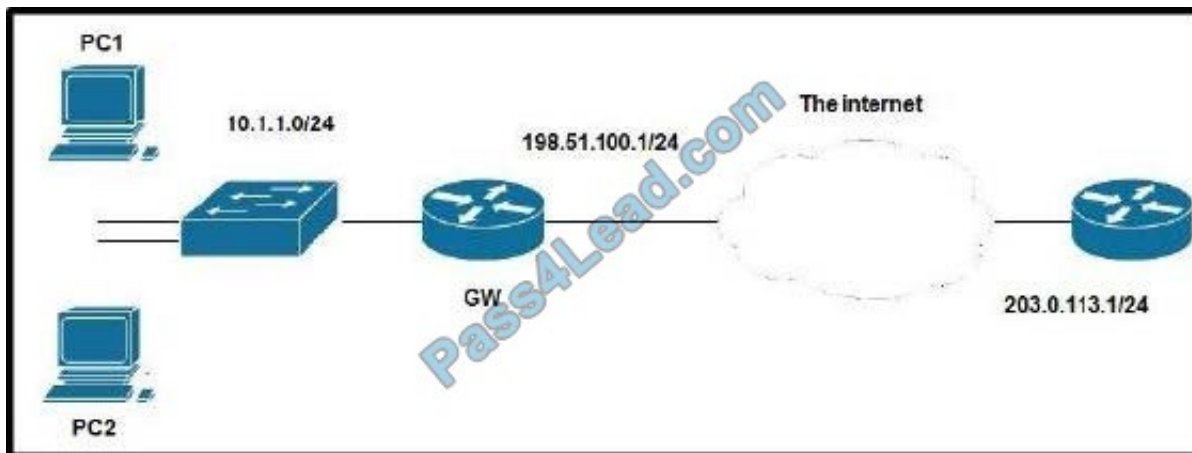
What is preventing PanelView from pinging the other endpoints in the network?

- A. Routing isn't enabled on L3SW1 for SVI 398 and SVI 399
- B. SVI 191 is in a different routing instance than SVI 398 and SVI 399
- C. Firewall1 is blocking pings from PanelView to the other endpoints
- D. An access list on L3SW1 is blocking pings from PanelView to the other endpoints

Correct Answer: B

QUESTION 4

Refer to the exhibit.



Which three options are needed to configure NAT on router GW so PC1 and PC2 will be able to ping 203.0.113.1? (Choose three)

- A. interface Ethernet0 ip nat inside interface Ethernet1 ip nat outside
- B. ip access-list standard ACL_NAT permit 10.1.1.0 0.0.0.255
- C. ip nat inside source static tcp 10.1.1.0 80 interface Ethernet1 80
- D. interface Ethernet0 ip nat outside interface Ethernet1 ip nat inside
- E. ip nat inside source list ACL_NAT interface Ethernet1 overload



F. ip access-list extended ACL_NAT permit tcp 10.1.1.0 0.0.0.255 any eq 80

Correct Answer: ABE

QUESTION 5

Which command globally enables QoS on a Cisco Industrial Ethernet switch?

- A. switch(config)#qos enable
- B. switch(config)#mls queuing enable
- C. switch#enable queuing
- D. switch(config)#mls qos

Correct Answer: D

[200-601 VCE Dumps](#)

[200-601 Practice Test](#)

[200-601 Exam Questions](#)



To Read the [Whole Q&As](#), please purchase the [Complete Version](#) from [Our website](#).

Try our product !

100% Guaranteed Success

100% Money Back Guarantee

365 Days Free Update

Instant Download After Purchase

24x7 Customer Support

Average 99.9% Success Rate

More than 800,000 Satisfied Customers Worldwide

Multi-Platform capabilities - [Windows](#), [Mac](#), [Android](#), [iPhone](#), [iPod](#), [iPad](#), [Kindle](#)

We provide exam PDF and VCE of Cisco, Microsoft, IBM, CompTIA, Oracle and other IT Certifications. You can view Vendor list of All Certification Exams offered:

<https://www.pass4lead.com/allproducts>

Need Help

Please provide as much detail as possible so we can best assist you.

To update a previously submitted ticket:



 <p>One Year Free Update Free update is available within One Year after your purchase. After One Year, you will get 50% discounts for updating. And we are proud to boast a 24/7 efficient Customer Support system via Email.</p>	 <p>Money Back Guarantee To ensure that you are spending on quality products, we provide 100% money back guarantee for 30 days from the date of purchase.</p>	 <p>Security & Privacy We respect customer privacy. We use McAfee's security service to provide you with utmost security for your personal information & peace of mind.</p>
---	---	--

Any charges made through this site will appear as Global Simulators Limited.

All trademarks are the property of their respective owners.

Copyright © pass4lead, All Rights Reserved.