

250-271^{Q&As}

Administration of Symantec NetBackup 7.5 for UNIX

Pass Symantec 250-271 Exam with 100% Guarantee

Free Download Real Questions & Answers **PDF** and **VCE** file from:

<https://www.pass2lead.com/250-271.html>

100% Passing Guarantee
100% Money Back Assurance

Following Questions and Answers are all new published by Symantec
Official Exam Center

-  **Instant Download** After Purchase
-  **100% Money Back** Guarantee
-  **365 Days** Free Update
-  **800,000+** Satisfied Customers



QUESTION 1

A backup job exits with "Status Code 1: the requested operation was partially successful". Which resource will provide useful information on the specific cause of this issue?

- A. the All Log Entries report
- B. the Client Backups report
- C. the bptm log on the media server involved in the backup job
- D. the bpcd log on the client system for the job

Correct Answer: A

QUESTION 2

Where should the Symantec NetBackup administrator look in the Symantec NetBackup Administration Console to determine whether an AdvancedDisk Storage server is already configured?

- A. Media and Device Management > Devices > Storage Servers
- B. Media and Device Management > Hosts > Storage Servers
- C. Media and Device Management > Credentials > Storage Servers
- D. Media and Device Management > Device Monitor > Storage Servers

Correct Answer: C

QUESTION 3

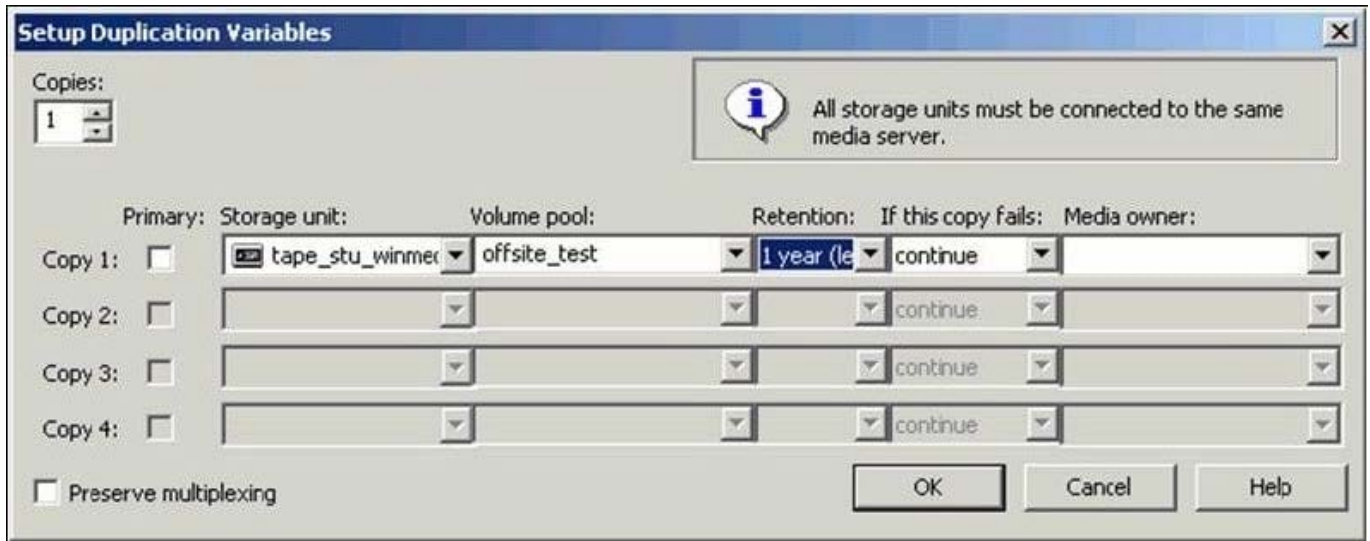
What is an accurate description of a Symantec NetBackup 7.5 domain?

- A. all media servers and clients owned by multiple master servers
- B. all clients owned by multiple master servers
- C. all media servers and clients owned by one master server
- D. all master and media servers on the same subnet

Correct Answer: B

QUESTION 4

Refer to the exhibit.



An administrator needs to create two additional copies of a backup image stored on a tape but the Setup Duplication Variables window will only allow one additional copy to be configured. What is a likely cause?

- A. The Maximum Backup Copies in the Master Server Host Properties is set to 2.
- B. The Media multiplexing in the schedule is set to 2.
- C. The Maximum Concurrent Jobs property in the Storage Unit is set to 2.
- D. The Limit Jobs per Policy property in the Backup policy is set to 2.

Correct Answer: A

QUESTION 5

Which prerequisite must be met before updating the volume configuration during a robot inventory?

- A. The robotic library contains media type HCART.
- B. The Symantec NetBackup environment contains at least one Media ID generation rule.
- C. The robotic library must be TLD.
- D. The robotic library must be configured with a robot type.

Correct Answer: D

[250-271 Study Guide](#)

[250-271 Exam Questions](#)

[250-271 Braindumps](#)