



300-075^{Q&As}

Implementing Cisco IP Telephony and Video

Pass Cisco 300-075 Exam with 100% Guarantee

Free Download Real Questions & Answers **PDF** and **VCE** file from:

<https://www.pass4lead.com/300-075.html>

100% Passing Guarantee
100% Money Back Assurance

Following Questions and Answers are all new published by Cisco
Official Exam Center

-  **Instant Download** After Purchase
-  **100% Money Back** Guarantee
-  **365 Days** Free Update
-  **800,000+** Satisfied Customers





QUESTION 1

What are two requirements for configuring an Intercluster Trunk (gatekeeper-controlled) in Cisco Unified Communications Manager? (Choose two.)

- A. The assigned name must be unique within the cluster.
- B. The Intercluster Trunk must have the same name in both clusters.
- C. The Cisco Unified Communications Manager group in the assigned device pool will determine which Cisco Unified Communications Manager systems register with the gatekeeper.
- D. The IP addresses of Cisco Unified Communications Manager systems in the remote cluster must be specified.
- E. The gatekeeper must be defined in Cisco Unified Communications Manager before the intercluster trunk is added.
- F. RSVP must be enabled to provide CAC between clusters.

Correct Answer: CE

QUESTION 2

Scenario:

There are two call control systems in this item.

The Cisco UCM is controlling the Cisco Jabber for Windows Client, and the 7965 and 9971 Video IP Phone.

The Cisco VCS is controlling the SX20, the Cisco TelePresence MCU, and the Cisco Jabber TelePresence for Windows

DP:

| DP | | | | |
|---------------------------------------------------------------------------|-------------------------|-------------------------|-------------------------|-------------------------|
| Status | | | | |
| 3 records found | | | | |
| Device Pool (1-3 of 3) | | | | |
| Find Device Pool where Device Pool Name begins with Find Clear Filter + - | | | | |
| <input type="checkbox"/> | Name ^ | Cisco Unified CM Group | Region | Date/Time |
| <input type="checkbox"/> | Default | Default | Default | CMLocal |
| <input type="checkbox"/> | Default | Default | Default | CMLocal |
| <input type="checkbox"/> | GSM | Default | GSM | CMLocal |

Add New Select All Clear All Delete Selected

Locations:



Locations

Locations (1 - 3 of 3)

Find Locations where Location begins with Find Clear Filter + -

| | |
|--------------------------|--------------------------|
| <input type="checkbox"/> | |
| <input type="checkbox"/> | Hub_None |
| <input type="checkbox"/> | Phantom |
| <input type="checkbox"/> | Shadow |

Add New Select All Clear All Delete Selected

CSS:

CSS

Calling Search Space (1-2 of 2)


Find Calling Search Space where CSS Name begins with Find Clear Filter + -

| <input type="checkbox"/> | CSS Name ^ |
|--------------------------|-----------------------------|
| <input type="checkbox"/> | A11-Devices |
| <input type="checkbox"/> | All-Devices |

Add New Select All Clear All Delete Selected

Movie Failure:

Movie Failure



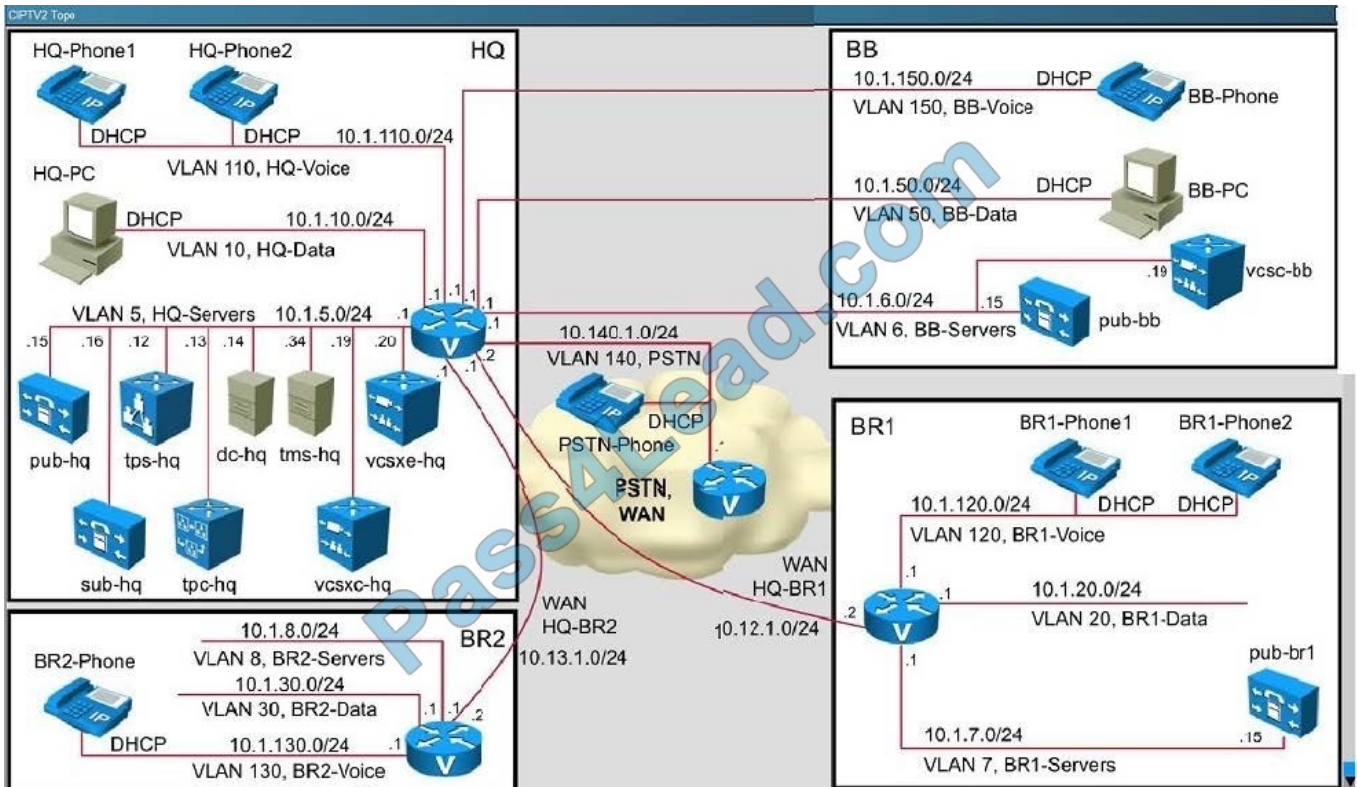
Login failed
Connection rejected by server. Try logging in again later.

OK

Movie Settings:



CIPTV2 Topology:



Subzone:

Subzone

- **Name:** HQ
- **Authentication policy:** Treat as authenticated
- **Total bandwidth available - Bandwidth restriction:** Limited
- **Total bandwidth available - Total bandwidth limit (kbps):** 512
- **Calls into or out of this subzone - Bandwidth restriction:** Limited
- **Calls into or out of this subone - Total bandwidth limit (kbps):** 0
- **Calls entirely within this subzone Bandwidth restriction:** Limited
- **Calls entirely within this subzone Total bandwidth limit (kbps):** 200

Links:



| Links | | | | | | | |
|-------------------------------------------------------------------------------------------------|----------------------------------|----------------------------------|----------------------------|--------|-------|----------------|---------------------------|
| Links | | | | | | | |
| You are here: Configuration > Bandwidth > Links | | | | | | | |
| Name ▾ | Node 1 | Node 2 | Pipe 1 | Pipe 2 | Calls | Bandwidth used | Actions |
| <input type="checkbox"/> DefaultSZtoClusterSZ | DefaultSubZone | ClusterSubZone | | | 0 | 0kpbs | View/Edit |
| <input type="checkbox"/> DefaultSZtoDefaultZ | DefaultSubZone | DefaultZone | | | 0 | 0kpbs | View/Edit |
| <input type="checkbox"/> DefaultSZtoTraversal SZ | DefaultSubZone | TraversalSubZone | | | 0 | 0kpbs | View/Edit |
| <input type="checkbox"/> SubZone001ToDefaultSZ | HQ | DefaultSubZone | | | 0 | 0kpbs | View/Edit |
| <input type="checkbox"/> SubZone001ToTraversalSZ | HQ | TraversalSubzone | | | 0 | 0kpbs | View/Edit |
| <input type="checkbox"/> TraversalSZtoDefaultZ | TraversalSubZone | DefaultZone | | | 0 | 0kpbs | View/Edit |
| <input type="checkbox"/> VCS HQ - toHQ | HQ | toHQ | to HQ pipe | | 1 | 128kpbs | View/Edit |

Pipe:

| Pipe |
|-----------------------------------------------------------------------------------------------------------------------------------------------------------------------------------------------------------------------------------------------------------------------------------------------------------------------------------------|
| <p>Name: to_HQ_pipe</p> <p>Total Bandwidth available – Bandwidth restriction: Limited</p> <p>Total Bandwidth available – Total bandwidth limit (kbps): 256</p> <p>Calls through this pipe – Bandwidth restriction: Limited</p> <p>Calls through this pipe – Per call bandwidth limit (kbps): 128</p> |

What two issues could be causing the Cisco Jabber Video for TelePresence failure shown in the exhibit? (Choose two)

- A. Incorrect username and password.
- B. Wrong SIP domain configured.
- C. User is not associated with the device.
- D. IP or DNS name resolution issue.
- E. CSF Device is not registered.
- F. IP Phone DN not associated with the user.

Correct Answer: BD

QUESTION 3

Refer to the exhibit.



```
*c xConfiguration Call Loop Detection Mode: "On"  
*c xConfiguration Call Routed Mode: "Always"  
*c xConfiguration Call Services CallsToUnknownIPAddresses: "Direct"  
*c xConfiguration Call Services Fallback Alias:  
*c xConfiguration CollaborationEdge Enabled: Off
```

Which statement is true?

- A. Endpoints can make calls to unknown IP addresses without the VCS querying any neighbors.
- B. If the VCS receives a call to an unknown IP address, it queries its neighbors for the remote address and if permitted, it routes the call through the neighbor.
- C. Endpoints that are registered directly to the VCS can call only an IP address of a system that is also registered directly to that VCS.
- D. Dialing by IP address is not supported on VCS.

Correct Answer: A

QUESTION 4

Which three statements are true in order for inbound PSTN calls to work in an H.323 gateway configured with Cisco Unified Communications Manager? (Choose three.)

- A. The H.323 gateway should be registered with Cisco Unified Communications Manager.
- B. The command `h323-gateway voip tech-prefix` should be configured on the H.323 interface.
- C. The command `h323-gateway voip bind srcaddr` should be configured on the H.323 interface.
- D. A VoIP dial peer pointing to Cisco Unified Communications Manager should be configured.
- E. The command `h323-gateway voip id` should be configured under the H.323 interface.
- F. A pots dial peer with `direct-inward-dial` and `incoming-called number` should be configured.

Correct Answer: CDF

QUESTION 5

You have deployed a centralized call processing solution with a multicast MOH server at your central site on a different VLAN from your Cisco Unified Communications Manager servers and IP phones. When central site users place calls on hold, dead air or silence is heard. Which two actions will resolve this issue? (Choose two.)

- A. Enable multicast routing on all the routers at the central site.
- B. Increase the TTL in the configuration of the MOH server to 2 so that packets can cross the VLAN boundary.
- C. Decrease the TTL configuration in the Cisco Unified Communications Manager server to 0 so that the multicast packets only go to the VLAN that contains the Cisco Unified Communications Manager server and IP phones.



- D. Enable multicast routing on only those router interfaces that connect the voice and MOH VLANs.
- E. Keep the TTL at 1 for the MOH server and increase the TTL for IP multicast routing to 2 on router interfaces.
- F. Configure ip-sparse mode on the router interfaces and increase the TTL on the routers to 2.

Correct Answer: AB

[300-075 Study Guide](#)

[300-075 Exam Questions](#)

[300-075 Braindumps](#)



To Read the [Whole Q&As](#), please purchase the [Complete Version](#) from [Our website](#).

Try our product !

100% Guaranteed Success

100% Money Back Guarantee

365 Days Free Update

Instant Download After Purchase

24x7 Customer Support

Average 99.9% Success Rate

More than 800,000 Satisfied Customers Worldwide

Multi-Platform capabilities - [Windows](#), [Mac](#), [Android](#), [iPhone](#), [iPod](#), [iPad](#), [Kindle](#)

We provide exam PDF and VCE of Cisco, Microsoft, IBM, CompTIA, Oracle and other IT Certifications. You can view Vendor list of All Certification Exams offered:

<https://www.pass4lead.com/allproducts>

Need Help

Please provide as much detail as possible so we can best assist you.

To update a previously submitted ticket:



| | | |
|---------------------------------------------------------------------------------------------------------------------------------------------------------------------------------------------------------------------------------------------------------------------------------------------------------------------------------|-------------------------------------------------------------------------------------------------------------------------------------------------------------------------------------------------------------------------------------------------------------|------------------------------------------------------------------------------------------------------------------------------------------------------------------------------------------------------------------------------------------------------------------------------------|
|  <p>One Year Free Update Free update is available within One Year after your purchase. After One Year, you will get 50% discounts for updating. And we are proud to boast a 24/7 efficient Customer Support system via Email.</p> |  <p>Money Back Guarantee To ensure that you are spending on quality products, we provide 100% money back guarantee for 30 days from the date of purchase.</p> |  <p>Security & Privacy We respect customer privacy. We use McAfee's security service to provide you with utmost security for your personal information & peace of mind.</p> |
|---------------------------------------------------------------------------------------------------------------------------------------------------------------------------------------------------------------------------------------------------------------------------------------------------------------------------------|-------------------------------------------------------------------------------------------------------------------------------------------------------------------------------------------------------------------------------------------------------------|------------------------------------------------------------------------------------------------------------------------------------------------------------------------------------------------------------------------------------------------------------------------------------|

Any charges made through this site will appear as Global Simulators Limited.

All trademarks are the property of their respective owners.

Copyright © pass4lead, All Rights Reserved.