

# 300-630<sup>Q&As</sup>

Implementing Cisco Application Centric Infrastructure - Advanced  
(DCACIA)

## Pass Cisco 300-630 Exam with 100% Guarantee

Free Download Real Questions & Answers **PDF** and **VCE** file from:

<https://www.pass2lead.com/300-630.html>

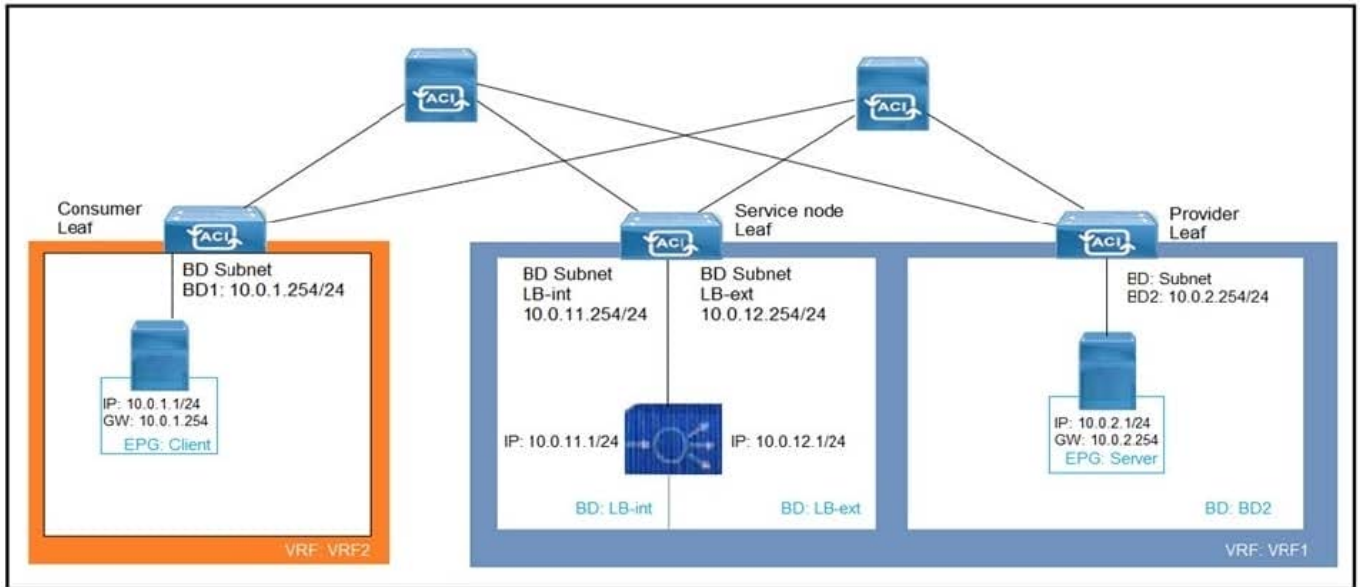
100% Passing Guarantee  
100% Money Back Assurance

Following Questions and Answers are all new published by Cisco  
Official Exam Center

- ⚙️ **Instant Download** After Purchase
- ⚙️ **100% Money Back** Guarantee
- ⚙️ **365 Days** Free Update
- ⚙️ **800,000+** Satisfied Customers



**QUESTION 1**

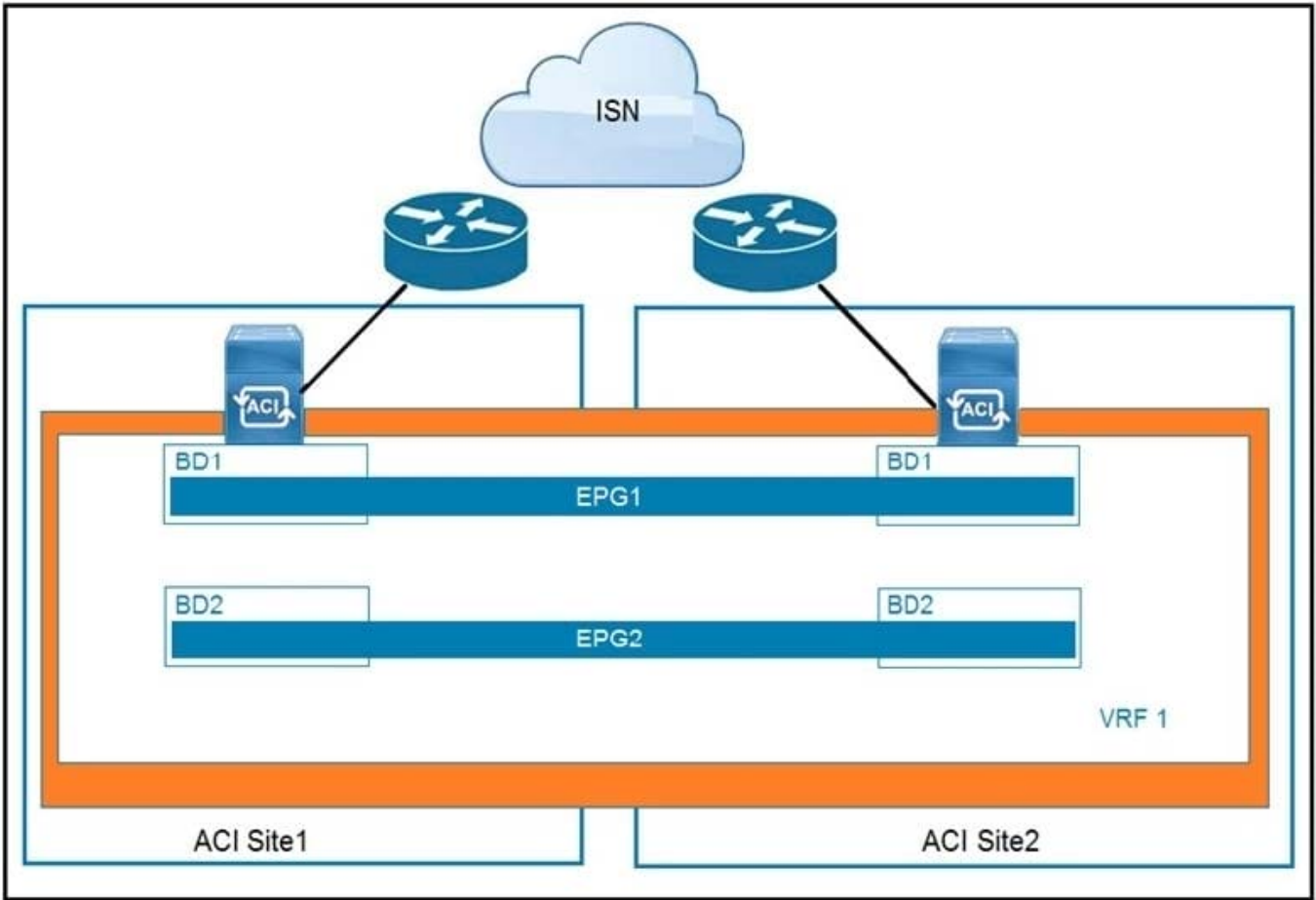


Refer to the exhibit. What must be configured to allow the PBR node (LB-int) to monitor the availability of the endpoint that is in the EPG server?

- A. Endpoint Dataplane Learning
- B. Unicast Route disabled for client and server bridge domains
- C. PBR node tracking
- D. Direct Connect in the service graph template

Correct Answer: A

**QUESTION 2**



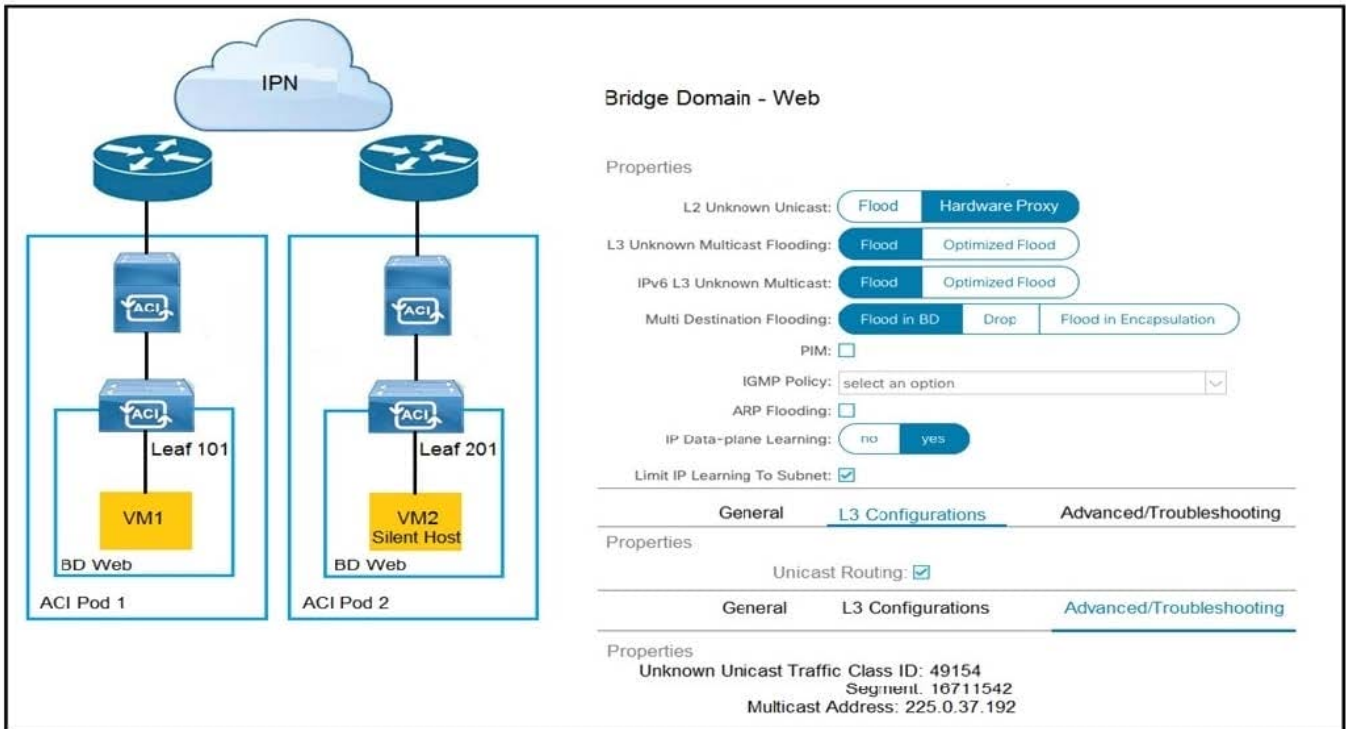
Refer to the exhibit. Which feature is available across sites if EPGs are stretched?

- A. active-active high-availability firewall clustering
- B. Layer 3 routing between sites
- C. Layer 2 flooding across sites
- D. live virtual machine migration

Correct Answer: B

Reference: [https://www.cisco.com/c/en/us/td/docs/switches/datacenter/aci/aci\\_multi-site/sw/1x/fundamentals/b\\_Cisco\\_ACI\\_Multi-Site\\_Fundamentals/b\\_ACI\\_Multi-Zone\\_Fundamentals\\_chapter\\_01.pdf](https://www.cisco.com/c/en/us/td/docs/switches/datacenter/aci/aci_multi-site/sw/1x/fundamentals/b_Cisco_ACI_Multi-Site_Fundamentals/b_ACI_Multi-Zone_Fundamentals_chapter_01.pdf) (6)

### QUESTION 3



Refer to the exhibit. How is the ARP request from VM1 forwarded when VM2 is not learned in the Cisco ACI fabric?

- A. Leaf 101 forwards the ARP request to one of the proxy VTEP spines.
- B. POD1 spine responds to the ARP request after the POD1 COOP is updated with the VM2 location.
- C. Leaf 101 encapsulates the ARP request into a multicast packet that is destined to 225.0.37.192.
- D. Leaf 101 switch consumes the ARP reply of VM2 to update the local endpoint table.

Correct Answer: A

**QUESTION 4**

An engineer must allow routes learned from one L3Out to be advertised out another L3Out. The engineer does not have an explicit list of all the routes that must be advertised out, however, they know that they are all part of the 10.16.0.0/16 CIDR block. Which attributes must be selected under Ext-EPG to allow the necessary routes to be advertised out?

- A. Enable Export Route Control Subnet and enable Aggregate Export
- B. Disable Shared Route Control Subnet and enable Aggregate Shared Routes
- C. Enable Export Route Control Subnet and disable Aggregate Shared Routes
- D. Enable Export Route Control Subnet and enable Shared Route Control Subnet

Correct Answer: A

Reference: [https://www.cisco.com/c/en/us/td/docs/switches/datacenter/aci/apic/sw/1-x/ACI\\_Best\\_Practices/b\\_ACI\\_Best\\_Practices/b\\_ACI\\_Best\\_Practices\\_chapter\\_01001.html](https://www.cisco.com/c/en/us/td/docs/switches/datacenter/aci/apic/sw/1-x/ACI_Best_Practices/b_ACI_Best_Practices/b_ACI_Best_Practices_chapter_01001.html)

QUESTION 5

**Create L4-L7 Devices**

STEP 1 > Cluster

1. Cluster 2. Devices 3. Parameters

Name: Firewall

Device Package: CISCO-CloudMode-1.0

Context Aware: Multiple Single

Function Type: GoThrough GoTo L1 L2

Device Type: CLOUD PHYSICAL VIRTUAL

Cluster Management Interface

EPG: OOB/OOB-Network

Virtual IP Address: 10.1.1.1

Port: 443

Username: admin

Password: \*\*\*\*\*

Confirm Password: \*\*\*\*\*

Refer to the exhibit. A network engineer configures a Layer 4 to Layer 7 device for an outside routed firewall that is connected to POD-1 inside a Cisco ACI fabric that consists of two pods. All traffic from POD-1 or POD-2 that uses the L3Out should pass through the routed firewall. Which Function Type must be implemented in the service graph for POD-2 to use L3Out?

- A. GoThrough
- B. L1
- C. GoTo
- D. L2

Correct Answer: D