

300-820^{Q&As}

Implementing Cisco Collaboration Cloud and Edge Solutions (CLCEI)

Pass Cisco 300-820 Exam with 100% Guarantee

Free Download Real Questions & Answers **PDF** and **VCE** file from:

<https://www.pass2lead.com/300-820.html>

100% Passing Guarantee
100% Money Back Assurance

Following Questions and Answers are all new published by Cisco
Official Exam Center

- ⚙️ **Instant Download** After Purchase
- ⚙️ **100% Money Back** Guarantee
- ⚙️ **365 Days** Free Update
- ⚙️ **800,000+** Satisfied Customers



QUESTION 1

Which statement about scheduling Expressway backups is true?

- A. It is not supported on the application.
- B. It is allowed from the application CLI of the Expressway only.
- C. It is allowed from the application CLI and GUI of the Expressway.
- D. It is allowed from the application GUI of the Expressway only.

Correct Answer: A

QUESTION 2

Which entry in the public (external) DNS is valid to configure DNS SRV records for a Cisco Mobile and Remote Access solution?

- A. _cisco-uds._tcp.
- B. _cisco-mra._tls.
- C. _collab-edge._tls.
- D. _cisco-expwy._tls.

Correct Answer: C

QUESTION 3

When deploying an Expressway Core and Expressway Edge cluster for mobile and remote access, which TLS verify subject name must be configured on the Expressway-E UC traversal zone?

- A. Webex CUSP Cluster Name
- B. Expressway-E Cluster Name
- C. Cisco Unified Communications Manager Publisher FQDN
- D. Expressway-C Cluster Name

Correct Answer: D

QUESTION 4

Which statement about the Cisco Webex hybrid service is true?

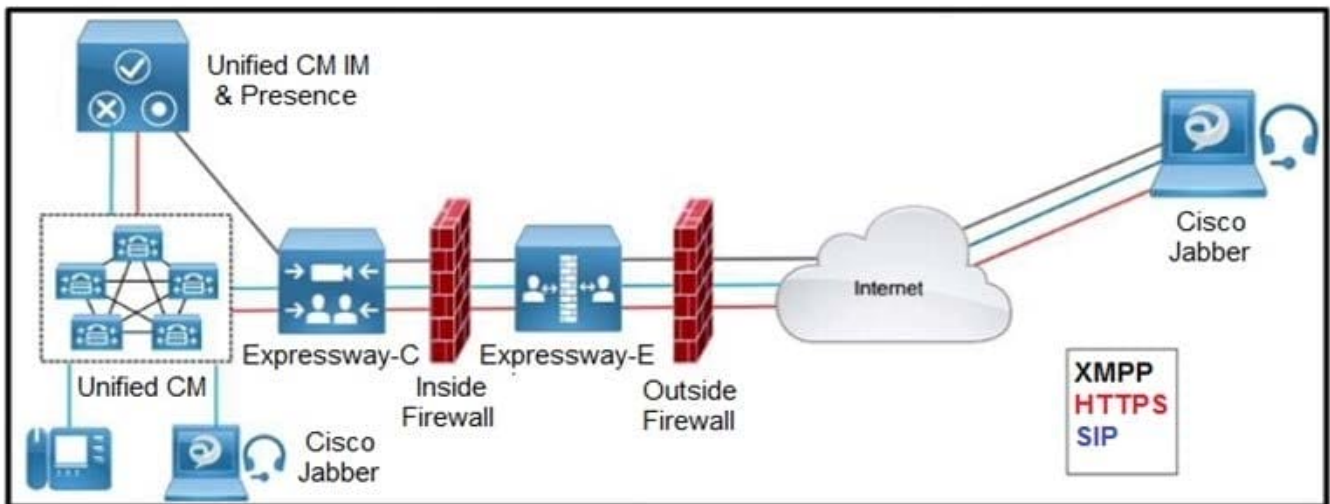
- A. Expressway Connector is required for an on-premises Exchange server.

- B. Hybrid Message service works only with Jabber cloud deployment.
- C. Directory Connector is required for Azure AD.
- D. Directory Connector must be deployed for OBTP to work with on-premises video devices.

Correct Answer: A

QUESTION 5

Refer to the exhibit.



Which two outbound connections should an administrator configure on the internal firewall? (Choose two.)

- A. XMPP: TCP 7400
- B. SIP: TCP 7001
- C. SIP TCP 5061
- D. Media: UDP 36012 to 59999
- E. HTTPS: TCP 8443

Correct Answer: AB

The internal firewall must allow the following outbound connections from the Expressway-C to the Expressway-E: SIP: TCP 7001 Traversal media: UDP 2776 to 2777 (or 36000 to 36011 for large VM/appliance) XMPP: TCP 7400 HTTPS (tunneled over SSH between C and E): TCP 2222 Source: Official Cert Guide

Reference: https://www.cisco.com/c/dam/en/us/td/docs/voice_ip_comm/expressway/config_guide/X12-5/Cisco-Expressway-IP-Port-Usage-for-Firewall-Traversal-Deployment-Guide-X12-5.pdf