

# 352-001<sup>Q&As</sup>

CCDE Written Exam

## Pass Cisco 352-001 Exam with 100% Guarantee

Free Download Real Questions & Answers **PDF** and **VCE** file from:

<https://www.pass2lead.com/352-001.html>

100% Passing Guarantee  
100% Money Back Assurance

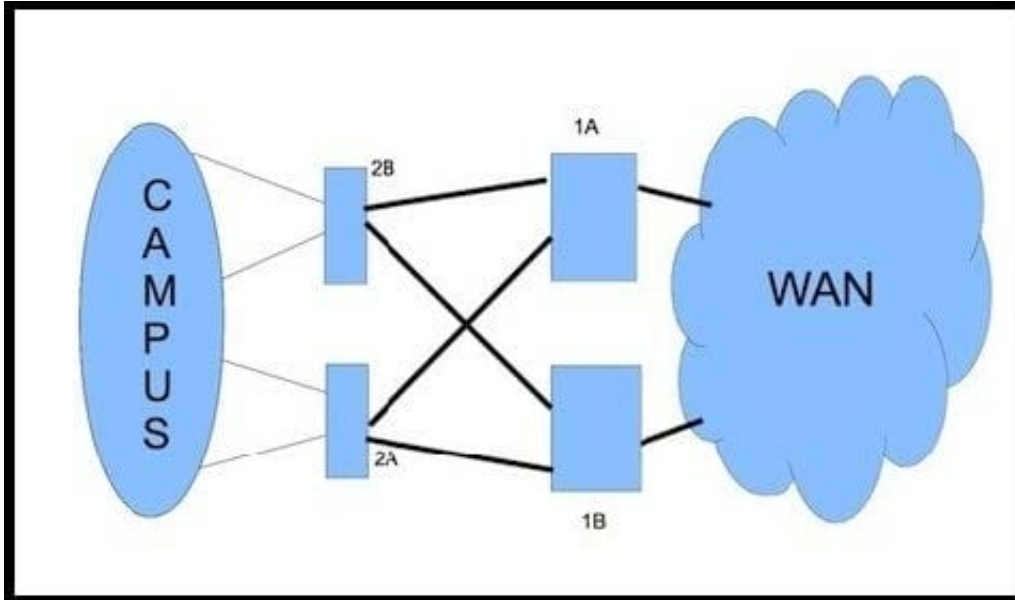
Following Questions and Answers are all new published by Cisco  
Official Exam Center

- ⚙ **Instant Download** After Purchase
- ⚙ **100% Money Back** Guarantee
- ⚙ **365 Days** Free Update
- ⚙ **800,000+** Satisfied Customers



### QUESTION 1

Refer to the exhibit.



How would you redesign the network to improve availability of the routers 1A and 1B at the core site?

- A. Enable Graceful Restart Helper for OSPF
- B. Use link bundles over multiple slots
- C. Use APS Ethernet circuits and redundant interfaces
- D. Create a multichassis system with the two routers

Correct Answer: D

### QUESTION 2

Your design client has requested that you ensure that the client devices are not dynamically configured with incorrect DNS information. When finalizing the network design, which security option must be configured on the switches?

- A. IGMP snooping
- B. DHCP snooping
- C. root guard
- D. DNS snooping

Correct Answer: B

### QUESTION 3

You must make IGP redesign recommendations for a client that has old equipment, with low CPU power and memory, that they do not have budget replace. They are very concerned about CPU load on routers. They are using IS-IS as the

IGP in a single I1 area and all routers are connected to each other with point-to-point links.

Which method do you recommend to reduce or limit CPU overhead caused by IS-IS?

- A. Use mesh groups to limit flooding of LSAs
- B. Implement wide style metrics for IS-IS on all routers
- C. Select a router to act as a pseudowire to limit topology synchronization
- D. Divide the router into multiple areas and implement address summarization

Correct Answer: A

---

### QUESTION 4

Which two statements regarding to QoS marking are true? (Choose two)

- A. Shaping is one of the ways that packets can be remarked
- B. Class-based marking occurs after packet classification
- C. 802.1Q/p CoS bits and IP Precedence are both layer 3 marking fields
- D. QoS marking establishes a trust boundary that scheduling tools depend on
- E. MPLS EXP and DSCP are both layer 2 marking fields

Correct Answer: BC

---

### QUESTION 5

Which two are IoT sensor-specific constraints? (Choose two)

- A. Memory
- B. Processing power
- C. The amount of devices
- D. Cooling
- E. Standard transport protocols

Correct Answer: CE

[352-001 Practice Test](#)

[352-001 Study Guide](#)

[352-001 Braindumps](#)