

352-011^{Q&As}

Cisco Certified Design Expert Practical

Pass Cisco 352-011 Exam with 100% Guarantee

Free Download Real Questions & Answers **PDF** and **VCE** file from:

<https://www.pass2lead.com/352-011.html>

100% Passing Guarantee
100% Money Back Assurance

Following Questions and Answers are all new published by Cisco
Official Exam Center

- ⚙️ **Instant Download** After Purchase
- ⚙️ **100% Money Back** Guarantee
- ⚙️ **365 Days** Free Update
- ⚙️ **800,000+** Satisfied Customers



QUESTION 1

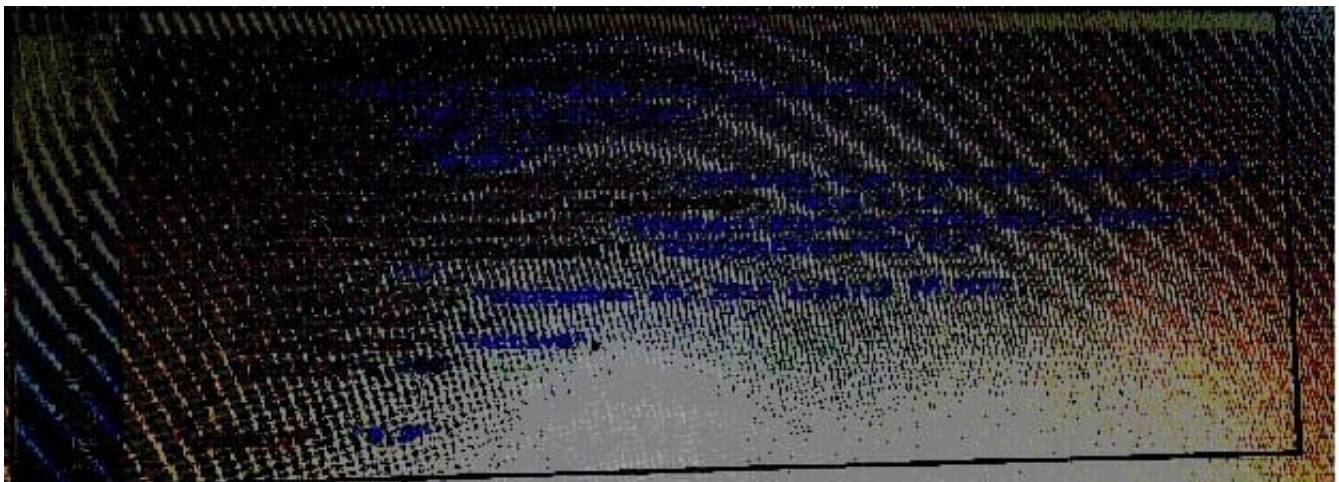
Which option is a benefit of using N-Port Virtualization?

- A. reduces the amount of domain IDs that are used in the fabric
- B. does not need to create zoning
- C. reduces latency when using local switching on Fibre Channel ports
- D. allows trunking to the upstream switch
- E. does not need to configure the upstream switches

Correct Answer: A

QUESTION 2

Refer to the exhibit.



Which data format is used in this REST API call?

- A. JSON
- B. HTMLv5
- C. HTML
- D. XML
- E. BASH

Correct Answer: A

QUESTION 3

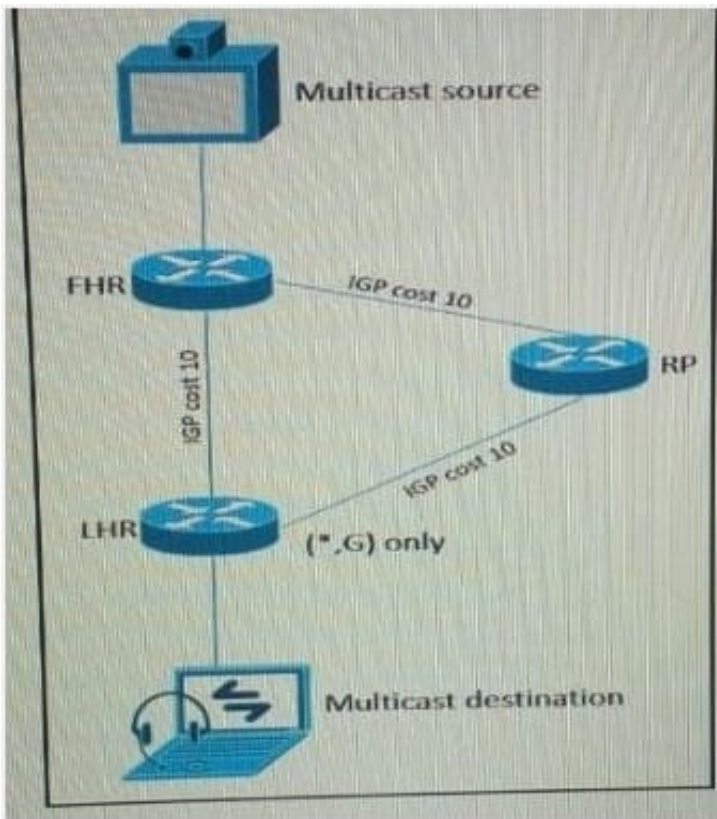
What are two possible drawbacks of ending Loop-Free Alternate to support fast convergence for most destination IGP prefixes? (Choose two)

- A. The IGP topology might need to be adjust
- B. Loop-free alternate's convergence in less than 100 milliseconds is not possible
- C. Loop-free alternate's are supported only for prefixes that are considered external tot the IGP
- D. Loop-free alternates are not supported in global VPN VRF OSPF instances
- E. Additional path computations are needed

Correct Answer: AE

QUESTION 4

Refer to the exhibit.



As part of a redesign project, you must predict multicast behavior. What is the resultant multicast traffic receiving on the shared tree(, G), if it is received on the LHR interface indicated?

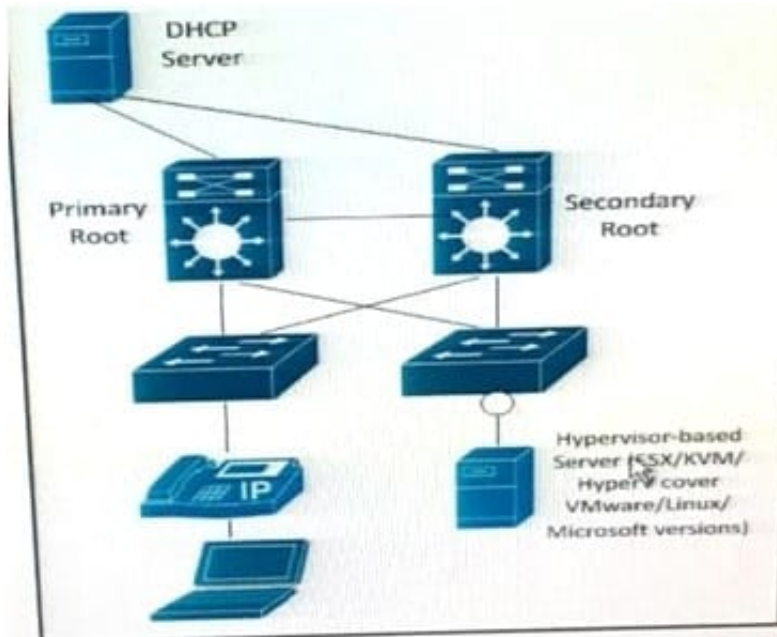
- A. It is dropped due to an unsuccessful RPF check against the multicast receiver
- B. It is switched due to a successful RPF check against the routing table
- C. It is switched given that no RPF check is performed

D. It is dropped due to an unsuccessful RPF check against the multicast source

Correct Answer: B

QUESTION 5

Refer to the Exhibit.



The server is running multiple VLANs on its NIC. Which two Layer 2 features should be applied to the network location identified by a circle? (Choose two)

- A. UDLD
- B. BPDU guard
- C. BPDU filtering
- D. Port Fast
- E. Loop guard
- F. PortFast trunk

Correct Answer: BF