

4A0-100^{Q&As}

Alcatel-Lucent Scalable IP Networks

Pass Alcatel-Lucent 4A0-100 Exam with 100% Guarantee

Free Download Real Questions & Answers **PDF** and **VCE** file from:

<https://www.pass2lead.com/4a0-100.html>

100% Passing Guarantee
100% Money Back Assurance

Following Questions and Answers are all new published by Alcatel-Lucent Official Exam Center

- ⚙️ **Instant Download** After Purchase
- ⚙️ **100% Money Back** Guarantee
- ⚙️ **365 Days** Free Update
- ⚙️ **800,000+** Satisfied Customers



QUESTION 1

Which statement best describes an SDP?

- A. Service Delivery Points are defined on the service provider network side and used to bind the service to an MPLS transport tunnel. Many services can be bound to a single SDP.
- B. Service Delivery Points are defined on the service provider access side and used to bind the connection of the service to CE device. Many services can be bound to a single SDP.
- C. Service Delivery Points are defined on the service provider network side and used to bind the service to an MPLS transport tunnel. Only one service can be bound to a single SDP.
- D. Service Delivery Points are defined on the service provider access side and used to bind the service to CE device. Only one service can be bound to a single SDP.

Correct Answer: A

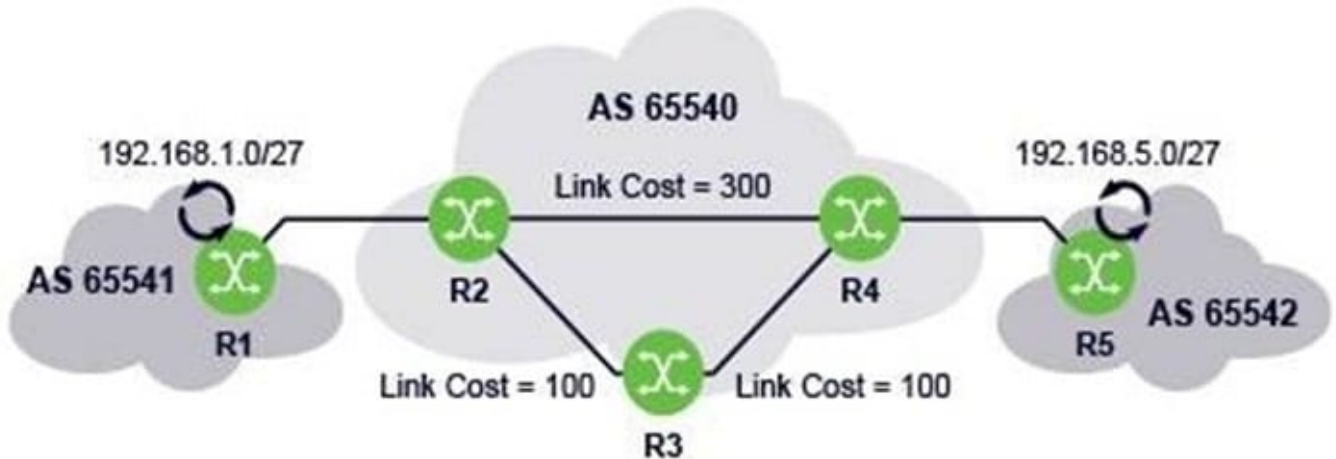
QUESTION 2

Which of the following is a private IP network address reserved by the IANA?

- A. 172.30.0.0/16
- B. 192.100.0.0/24
- C. 172.0.0.0/16
- D. 169.254.0.0/16
- E. 11.0.0.0/8

Correct Answer: A

QUESTION 3



What type of BGP sessions does router R2 need to establish in order to reach networks 192.168.1.0/27 and 192.168.5.0/27?

- A. eBGP peering sessions with routers R1, R3 and R4
- B. iBGP peering sessions with routers R1 and R5
- C. An eBGP peering session with router R1, and iBGP peering sessions with routers R3 and R4
- D. An iBGP peering session with router R1, and an eBGP peering session with router R4

Correct Answer: C

QUESTION 4

At what stage in the packet forwarding process, is the IP packet header examined?

- A. When the router first receives a frame from a LAN.
- B. After the forwarding table is checked.
- C. After the IP datagram is extracted from the L2 frame.
- D. Immediately before the IP packet is encapsulated for transmission.

Correct Answer: C

QUESTION 5

Which of the following statements regarding TCP is TRUE?

- A. Sequence numbers are used to ensure that the data received is offered to the application in the correct order.
- B. The SYN flag is used to identify congestion in the network.

C. The NACK flag is set on confirmation segments to acknowledge FCS errors.

D. The window size is transmitted in all TCP segments to communicate MTU limitations of lower layer protocols to upper layer applications.

Correct Answer: A

[Latest 4A0-100 Dumps](#)

[4A0-100 Practice Test](#)

[4A0-100 Exam Questions](#)