

# 4A0-102<sup>Q&As</sup>

Alcatel-Lucent Border Gateway Protocol

## Pass Alcatel-Lucent 4A0-102 Exam with 100% Guarantee

Free Download Real Questions & Answers **PDF** and **VCE** file from:

<https://www.pass2lead.com/4a0-102.html>

100% Passing Guarantee  
100% Money Back Assurance

Following Questions and Answers are all new published by Alcatel-Lucent Official Exam Center

- ⚙️ **Instant Download** After Purchase
- ⚙️ **100% Money Back** Guarantee
- ⚙️ **365 Days** Free Update
- ⚙️ **800,000+** Satisfied Customers



**QUESTION 1**

Which of the following is NOT considered an option of export policies?

- A. Advertising customer networks into BGP.
- B. Sending aggregates that summarize the AS s address space.
- C. Sending MEDs to influence ingress traffic from peers.
- D. Preventing unwanted NLRI from entering the AS.

Correct Answer: D

**QUESTION 2**

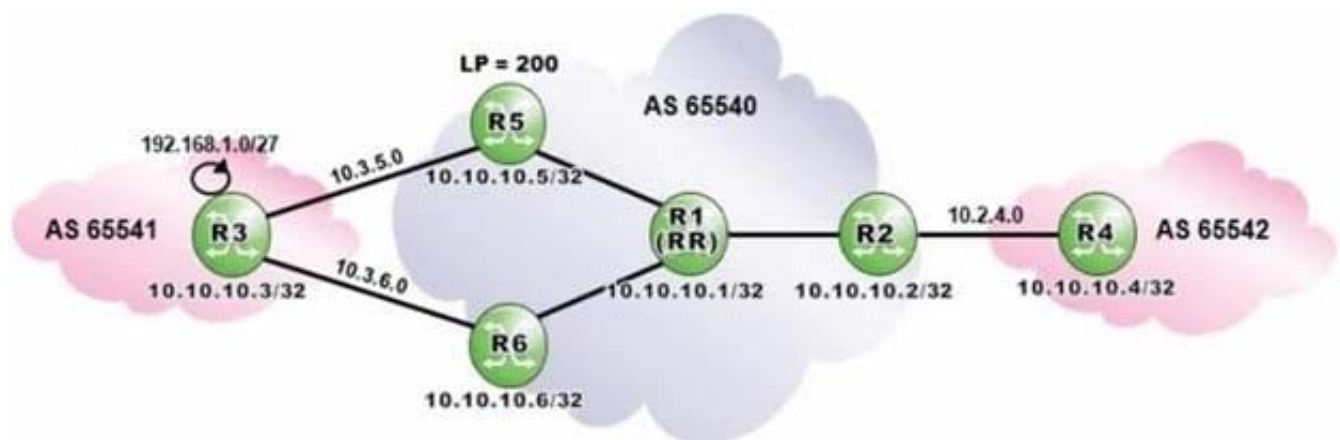
What kind of BGP attribute is the Local Preference?

- A. Optional transitive attribute.
- B. Optional non-transitive attribute.
- C. Well-known mandatory attribute.
- D. Well-known discretionary attribute.

Correct Answer: D

**QUESTION 3**

Click the exhibit.



Router R1 is a route reflector with clients R2, R5 and R6. Prefixes advertised by router R5 have a local preference of 200. Router R3 advertises the prefix 192.168.1.0/27 to routers R5 and R6.

Assuming that none of the routers in AS 65540 is configured with "advertise-external", what is the expected output of

"show router bgp routes" on router R2?

- A. Option A
- B. Option B
- C. Option C
- D. Option D

Correct Answer: A

---

#### QUESTION 4

Which of the following behaviors regarding the modification of BGP attributes within a confederation is TRUE?

- A. Next Hop is modified when crossing member AS boundaries within a confederation.
- B. Origin Code is modified when crossing member AS boundaries within a confederation.
- C. AS Path is modified when crossing member AS boundaries within a confederation.
- D. None of the well known mandatory attributes is modified within a confederation.

Correct Answer: C

---

#### QUESTION 5

Which of the following is the minimum requirement for an AS to be considered multi-homed?

- A. A single connection to a single service provider.
- B. Two connections to a single service provider.
- C. Two connections to two different service providers.
- D. Multiple connections to different service providers.

Correct Answer: B

[4A0-102 VCE Dumps](#)

[4A0-102 Practice Test](#)

[4A0-102 Braindumps](#)