

4A0-102^{Q&As}

Alcatel-Lucent Border Gateway Protocol

Pass Alcatel-Lucent 4A0-102 Exam with 100% Guarantee

Free Download Real Questions & Answers **PDF** and **VCE** file from:

<https://www.pass2lead.com/4a0-102.html>

100% Passing Guarantee
100% Money Back Assurance

Following Questions and Answers are all new published by Alcatel-Lucent Official Exam Center

- ⚙️ **Instant Download** After Purchase
- ⚙️ **100% Money Back** Guarantee
- ⚙️ **365 Days** Free Update
- ⚙️ **800,000+** Satisfied Customers



QUESTION 1

Which of the following regarding the connections between eBGP peers is TRUE?

- A. eBGP peers typically use system addresses for session establishment.
- B. eBGP peers are managed under a single administration.
- C. eBGP peers do not propagate updates learned via iBGP.
- D. eBGP peers are usually directly connected to each other.

Correct Answer: D

QUESTION 2

Assuming that "client1" and "client2" are directly-connected networks, what is the result of executing the following BGP export policy?

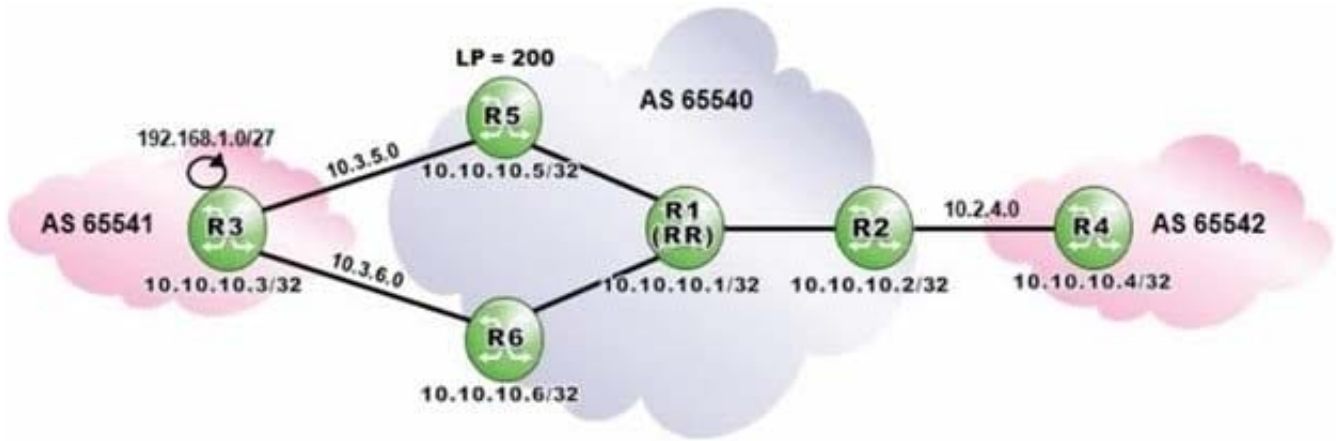
```
entry 10
  from
    protocol direct
  exit
  action accept
    community add "North"
  exit
exit
entry 20
  from
    prefix-list "client1"
  exit
  action accept
    community add "West"
  exit
exit
entry 30
  from
    prefix-list "client2"
  exit
  action accept
    community add "East"
  exit
exit
default-action reject
```

- A. "client1" routes will be tagged with communities "North" and "West".
- B. "client1" routes will be tagged with community "West".
- C. "client1" routes will be tagged with community "North".
- D. "client1" routes will be rejected.

Correct Answer: C

QUESTION 3

Click the exhibit.



Router R1 is a route reflector with clients R2, R5 and R6. Prefixes advertised by router R5 have a local preference of 200. Router R3 advertises the prefix 192.168.1.0/27 to routers R5 and R6.

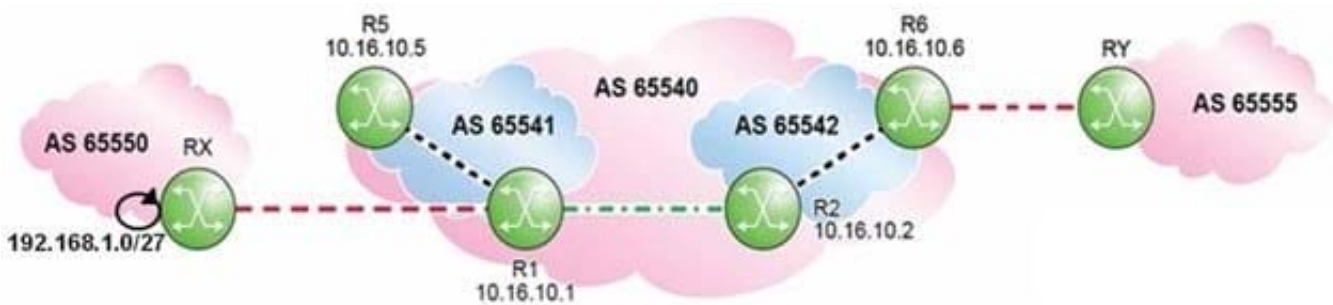
Assuming that none of the routers in AS 65540 is configured with "advertise-external", what is the expected output of "show router bgp routes" on router R2?

- A. Option A
- B. Option B
- C. Option C
- D. Option D

Correct Answer: A

QUESTION 4

Click the exhibit.



Which of the following is a valid BGP configuration for router R2? A. Option A

A. R2>config>router>bgp# info

```
-----  
group "Conf-eBGP"  
  peer-as 65541  
  neighbor 10.16.10.1  
  exit  
exit  
group "Member-AS"  
  neighbor 10.16.10.6  
  peer-as 65542  
  exit  
exit  
no shutdown
```

B. R2>config>router>bgp# info

```
-----  
group "Conf-eBGP"  
  peer-as 65541  
  neighbor 10.16.10.1  
  exit  
exit  
group "Member-AS"  
  neighbor 10.16.10.6  
  peer-as 65540  
  exit  
exit  
no shutdown
```

C. R2>config>router>bgp# info

```
-----  
group "Conf-eBGP"  
  peer-as 65540  
  neighbor 10.16.10.1  
  exit  
exit  
group "Member-AS"  
  neighbor 10.16.10.6  
  peer-as 65542  
  exit  
exit  
no shutdown
```

D. R2>config>router>bgp# info

```
-----  
group "Conf-BGP"  
  peer-as 65540  
  neighbor 10.16.10.1  
  exit  
  neighbor 10.16.10.6  
  exit  
exit  
no shutdown
```

B. Option B

C. Option C

D. Option D

Correct Answer: A

QUESTION 5

Assuming that "client1" and "client2" are directly-connected networks, what is the result of executing the following BGP policy?

```
entry 10
  from
    protocol direct
  exit
  action accept
    community add "West"
  exit
exit
entry 20
  from
    prefix-list "client1"
  exit
  action accept
    community add "North"
  exit
exit
entry 30
  from
    prefix-list "client2"
  exit
  action accept
    community add "South"
  exit
exit
default-action reject
```

- A. "client2" routes will be tagged with communities "West" and "North".
- B. "client2" routes will be tagged with communities "West", "North" and "South".
- C. "client2" routes will be tagged with community "West".
- D. "client2" routes will be tagged with community "South".

Correct Answer: C

[4A0-102 Practice Test](#)

[4A0-102 Study Guide](#)

[4A0-102 Exam Questions](#)