

# 4A0-106<sup>Q&As</sup>

Alcatel-Lucent Virtual Private Routed Networks

## Pass Alcatel-Lucent 4A0-106 Exam with 100% Guarantee

Free Download Real Questions & Answers **PDF** and **VCE** file from:

<https://www.pass2lead.com/4a0-106.html>

100% Passing Guarantee  
100% Money Back Assurance

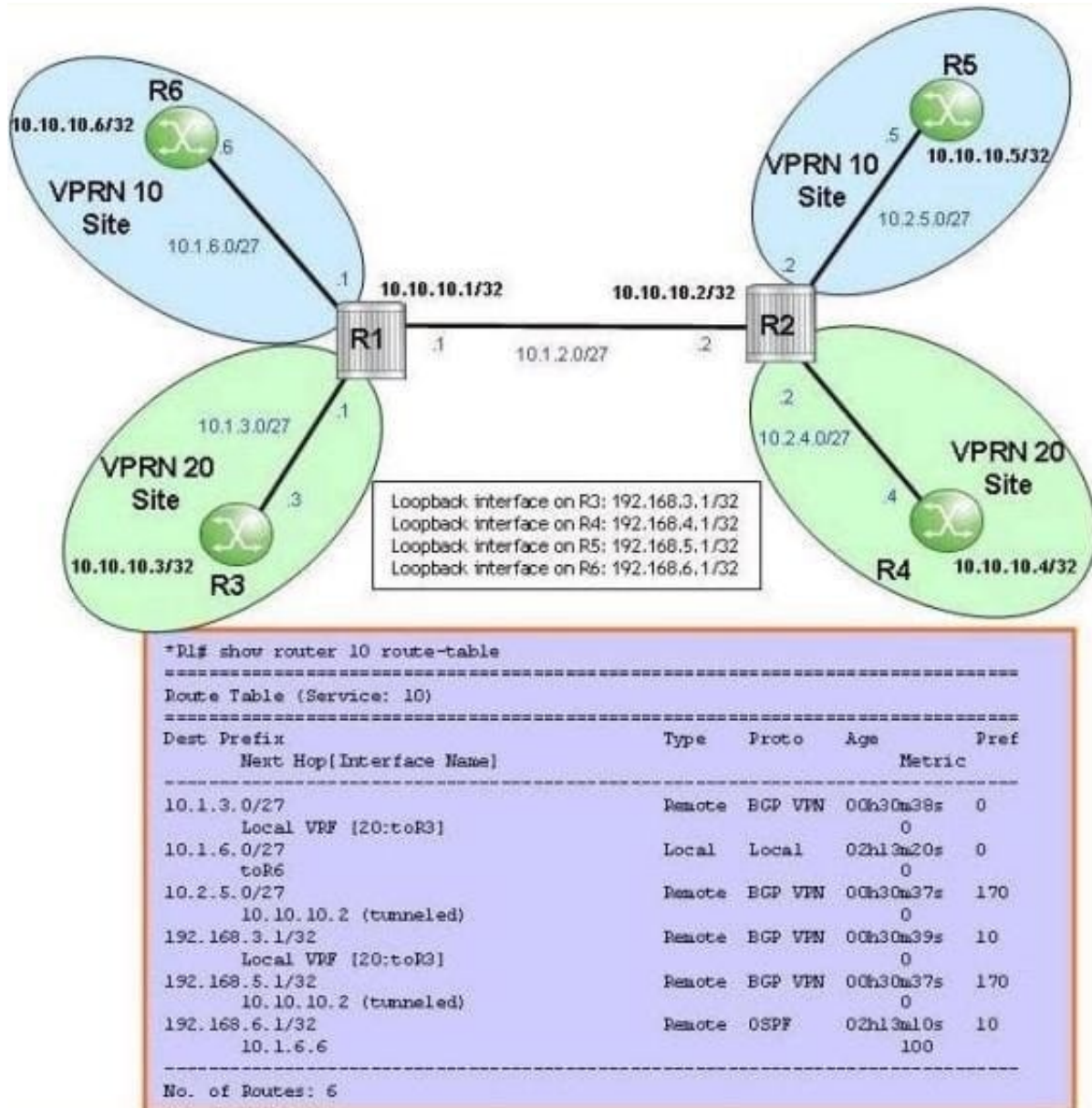
Following Questions and Answers are all new published by Alcatel-Lucent Official Exam Center

- ⚙️ **Instant Download** After Purchase
- ⚙️ **100% Money Back** Guarantee
- ⚙️ **365 Days** Free Update
- ⚙️ **800,000+** Satisfied Customers



**QUESTION 1**

Click the exhibit.



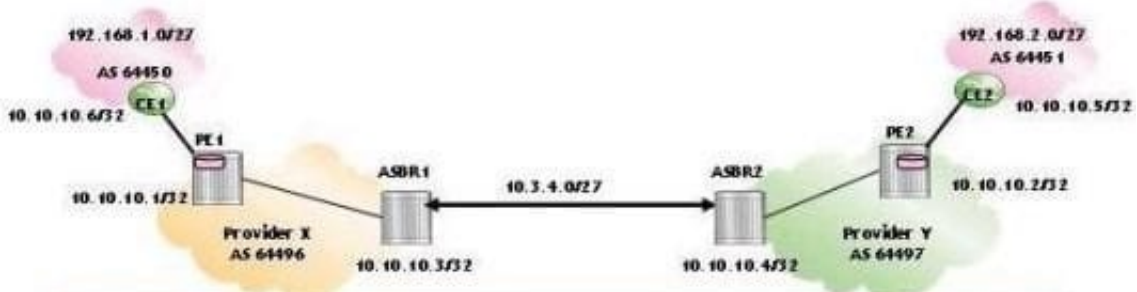
Which VPRN type produces the output shown on router R1?

- A. A full mesh VPRN
- B. A PE hub and spoke VPRN
- C. An extranet VPRN
- D. A CE hub and spoke VPRN

Correct Answer: C

**QUESTION 2**

Click the exhibit.



```
*A:
=====
BGP Router ID:10.10.10.3      AS:64496      Local AS:64496
=====
BGP VPN-IPv4 Routes
=====
Flag Network                               LocalPref MED
Nexthop
As-Path
-----
*>1 64496:1:10.1.6.0/27
    10.10.10.1
    No As-Path
    100
    None
    131070
*>1 64496:1:10.2.5.0/27
    10.3.4.4
    64497
    None
    None
    131068
*>? 64496:1:10.10.10.5/32
    10.3.4.4
    64497 64451
    None
    None
    131068
*>? 64496:1:10.10.10.6/32
    10.10.10.1
    64450
    100
    None
    131070
*>? 64496:1:192.168.1.0/27
    10.10.10.1
    64450
    100
    None
    131070
*>? 64496:1:192.168.2.0/27
    10.3.4.4
    64497 64451
    None
    None
    131068
-----
Routes : 6
```

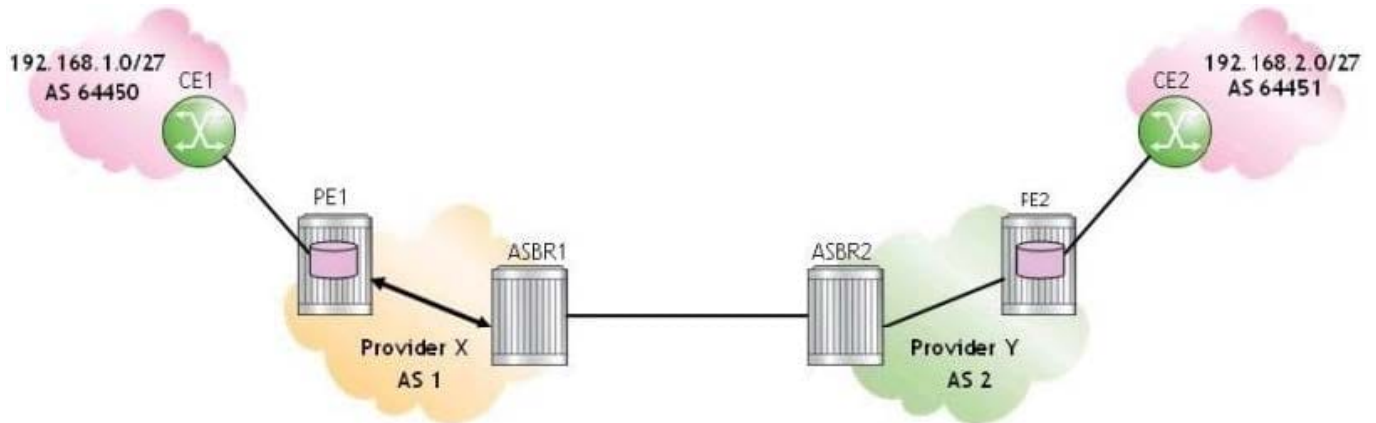
Which of the following commands produces the output for the inter-AS model B VPRN?

- A. ASBR1# show router 10 bgp routes vpn-ipv4
- B. ASBR1# show router bgp routes
- C. ASBR1# show router bgp routes vpn-ipv4
- D. ASBR1# show router route-table

Correct Answer: C

**QUESTION 3**

Click the exhibit.



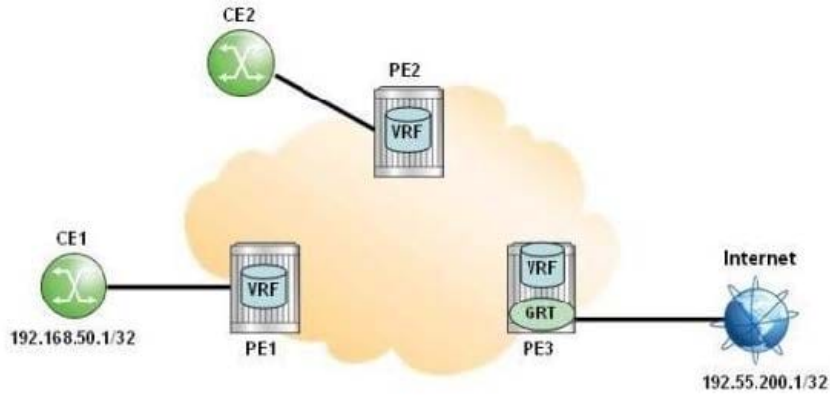
For the inter-AS model B VPRN, which of the following protocols is used to advertise routes between PE1 and ASBR1?

- A. iBGP
- B. eBGP
- C. MP-iBGP
- D. MP-eBGP

Correct Answer: C

#### QUESTION 4

Click the exhibit.



A.

Dest Prefix[Flags]	Type	Proto	Age	Pref
Next Hop [Interface Name]			Metric	
192.168.50.1	Remote	VPN Leak	00h00m06s	170
10.10.10.1 (tunneled)			0	

B.

Dest Prefix[Flags]	Type	Proto	Age	Pref
Next Hop [Interface Name]			Metric	
192.168.50.1	Remote	VPN Leak	00h00m06s	180
10.10.10.1 (tunneled)			0	

C.

Dest Prefix[Flags]	Type	Proto	Age	Pref
Next Hop [Interface Name]			Metric	
192.168.50.1	Remote	BGP VPN	00h00m06s	170
10.10.10.1 (tunneled)			0	

D.

Dest Prefix[Flags]	Type	Proto	Age	Pref
Next Hop [Interface Name]			Metric	
192.168.50.1	Remote	BGP VPN	00h00m06s	180
10.10.10.1 (tunneled)			0	

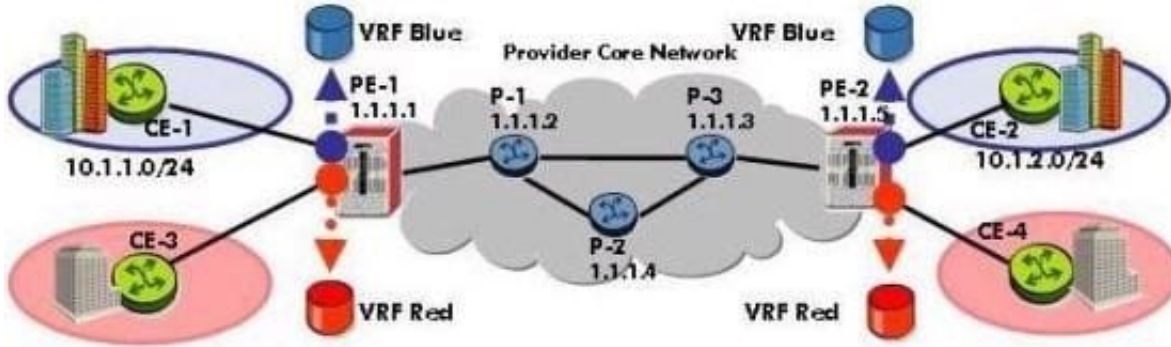
Internet access using route leaking between the VRF and the global routing table is configured in the network. Which of the following is the correct output of route 192.168.50.1 in the global routing table of PE3?

- A. A
- B. B
- C. C
- D. D

Correct Answer: B

**QUESTION 5**

Click the exhibit.



```
PE-1# configure router mpls
PE-1>config>router>mpls# no shutdown
PE-1>config>router>mpls# interface "PE-1 to P-1"
PE-1>config>router>mpls>if$ exit all
PE-1#
```

An Alcatel-Lucent 7750 SR is to be configured as a PE router that supports VPRNs using LDP as the transport protocol. Which of the following best describes this configuration?

- A. This configuration is correct and complete.
- B. This configuration is correct, except that the system interface must be added.
- C. This configuration is correct, except that the interfaces facing the CE routers must be added.
- D. MPLS configuration is not required.

Correct Answer: D

[4A0-106 VCE Dumps](#)

[4A0-106 Practice Test](#)

[4A0-106 Brindumps](#)