

500-440^{Q&As}

Designing Cisco Unified Contact Center Enterprise (UCCED)

Pass Cisco 500-440 Exam with 100% Guarantee

Free Download Real Questions & Answers **PDF** and **VCE** file from:

<https://www.pass2lead.com/500-440.html>

100% Passing Guarantee
100% Money Back Assurance

Following Questions and Answers are all new published by Cisco
Official Exam Center

- ⚙️ **Instant Download** After Purchase
- ⚙️ **100% Money Back** Guarantee
- ⚙️ **365 Days** Free Update
- ⚙️ **800,000+** Satisfied Customers



QUESTION 1

The Cisco Finesse supervisor features extend the agent desktop with additional gadgets. Which three additional features are provided? (Choose three.)

- A. team performance gadget to view agent status
- B. queue statistics gadget to view queue (skill group) statistics for the supervisor's queues
- C. Cisco Unified Communications Manager Remote Silent Monitoring
- D. barge-in and intercept
- E. gadget to park calls
- F. transcoder gadget for recording

Correct Answer: ABD

QUESTION 2

When using microapps, which core components are required for calls that originate from Cisco Unified Communications Manager to Cisco Unified CVP using Comprehensive mode?

- A. CUCM: CTI Route Port, SIP Trunk, ICM: CVP Type 2 VRU, CUBE, VXML Gateway
- B. CUCM: CTI Route Point and SIP Trunk, ICM: CVP Type 2 VRU and Network VRU labels, VXML Gateway
- C. CUCM: CTI Route Point and SIP Trunk, ICM: CVP Type 10 VRU and Network VRU labels, VXML Gateway
- D. CUCM: CTI Route Port and SIP Trunk, ICM: CVP Type 10 VRU and Network VRU labels, VXML Gateway

Correct Answer: C

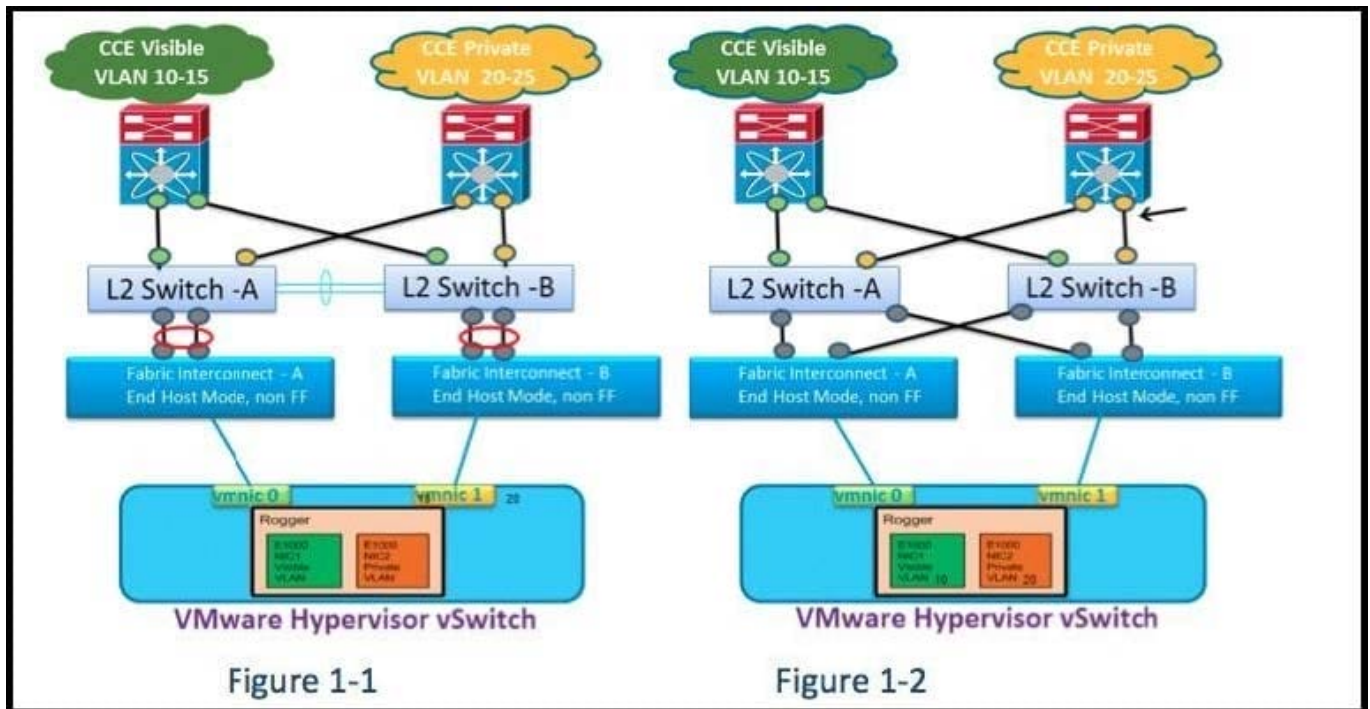
QUESTION 3

Erlang calculations are used to size contact center resources. Which two resources are sized by using Erlang-B? (Choose two.)

- A. agents
- B. IVR ports
- C. PSTN gateway trunks
- D. reporting ports

Correct Answer: BC

QUESTION 4



Refer to the exhibit. Which option describes Cisco Unified CCE on the UCS B Fabric Interconnection pair to the upstream network connectivity?

- A. Have a straight links scheme from the UCS B FI pair to the upstream Layer 2 switches as shown in Figure 1-1.
- B. Have a cross-connect links scheme from the UCS B FI pair to the upstream Layer 2 switches as shown in Figure 1-2.
- C. Any of the design options can be deployed with Cisco Unified CCE, but only one of those two options can be deployed within the entire solution.
- D. Both design options can be deployed with Cisco Unified CCE and you can include both design options within the solution.

Correct Answer: B

QUESTION 5

Which type of traffic from the peripheral gateway to the central controller is considered high priority in the Cisco Unified Contact Center Enterprise solution?

- A. configuration requests
- B. skill group data
- C. routing and DMP control traffic
- D. Real-Time Monitoring

Correct Answer: C

[Latest 500-440 Dumps](#)

[500-440 VCE Dumps](#)

[500-440 Exam Questions](#)