



70-243^{Q&As}

Administering and Deploying System Center 2012 Configuration Manager

Pass home 70-243 Exam with 100% Guarantee

Free Download Real Questions & Answers **PDF** and **VCE** file from:

<https://www.pass4lead.com/70-243.html>

100% Passing Guarantee
100% Money Back Assurance

Following Questions and Answers are all new published by home
Official Exam Center

-  **Instant Download** After Purchase
-  **100% Money Back** Guarantee
-  **365 Days** Free Update
-  **800,000+** Satisfied Customers





QUESTION 1

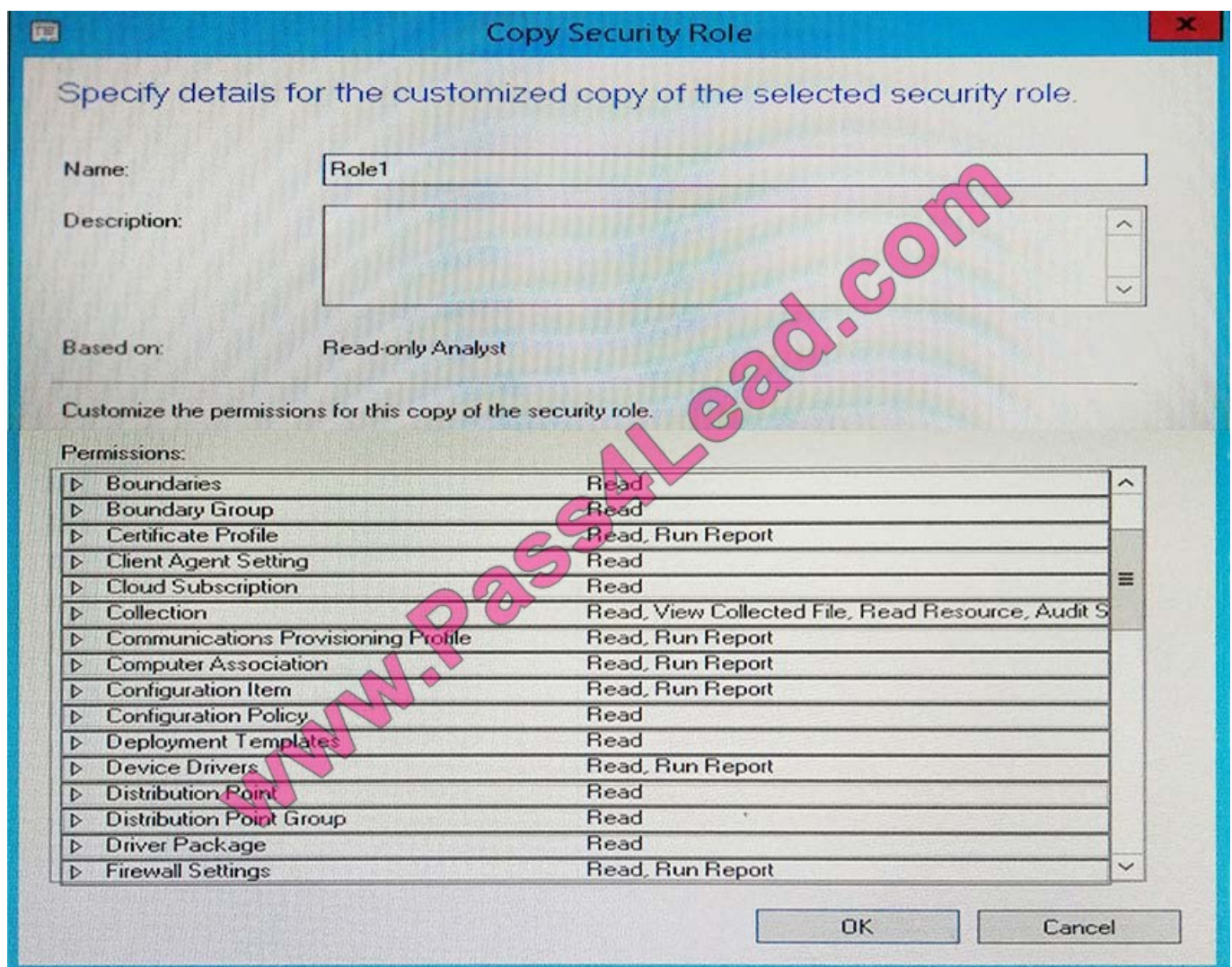
You have a System Center 2012 R2 Configuration Manager Service Pack 1 (SP1) deployment.

You are creating a custom security role named Role1.

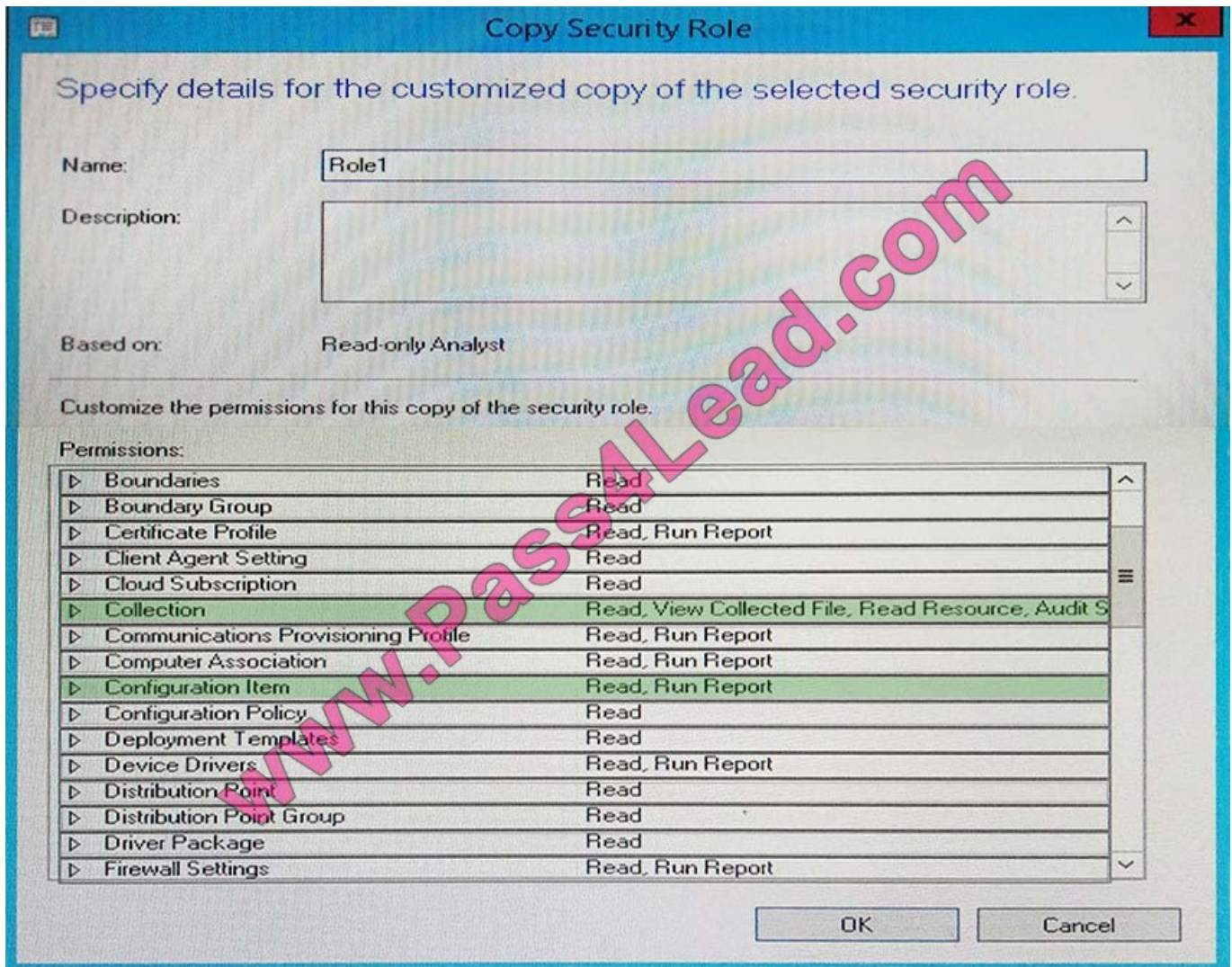
You need to ensure that users to whom Role1 is assigned can create and deploy configuration baselines.

Which two permissions should you modify for Role1? To answer, select the appropriate permissions in the answer area.

Hot Area:



Correct Answer:



QUESTION 2

You have Windows 8.1 images that are rebuilt quarterly and imported to System Center 2012 R2 Configuration Manager Service Pack 1 (SP1).

The Microsoft Deployment Toolkit (MDT) 2013 is integrated with Configuration Manager.

You need to reduce the network security risks when the images are deployed by using Operating System Deployment (OSD).

Which two tasks should you perform? Each correct answer presents a complete solution.

- A. Before the Apply Operating System Image task sequence step, add a step to install Deployment Imaging Servicing and Management (DISM).
- B. Before the Apply Operating System Image task sequence step, add a step to install the Windows Assessment and Deployment Kit (Windows ADK).



- C. After the Apply Operating System Image task sequence step, add a step to install software updates offline.
- D. After the installation of the final application, add an Install Software Updates task sequence step.
- E. After the Apply Operating System Image task sequence step, add a Run Command Line step that runs wuauclt.exe /detectnow.

Correct Answer: CD

C: To do the updates offline to reduce network security risks.

D: Install software updates to minimize network security risks

Note: Configuration Manager 2012: Offline Servicing for Operating System Images In Configuration Manager 2012 there is a new feature for applying updates to operating system images while they are in the Configuration Manager library. This means any operating system image you see in the Operating Systems > Operating Systems Images node from the SoftwareLibrary wunderbar can be updated with Component Based Servicing (CBS) updates. By updating an image in the Software Library instead of performing a new build and capture of the operating system image you will gain a few distinct advantages. You will be able to reduce the risk of vulnerabilities during operating system deployments and reduce the

overall operating system deployment to the end user. You will also reduce the administrative effort to maintain your operating system images.

Task Sequence Steps in Configuration Manager

The following task sequence steps can be added to a System Center 2012 Configuration Manager task sequence:

Install Software Updates

Use the Install Software Updates task sequence step to install software updates on the destination computer. The destination computer is not evaluated for applicable software updates until this task sequence step runs. At that time, the

destination computer is evaluated for software updates like any other Configuration Manager-managed client. In particular, this step installs only the software updates that are targeted to collections of which the computer is currently a

member.

This task sequence step runs only in a standard operating system. It does not run in Windows PE.

Further information:

<http://technet.microsoft.com/en-us/library/hh824821.aspx> Deployment Image Servicing and Management (DISM) Technical Reference Deployment Image Servicing and Management (DISM) is a command-line tool that is used to mount and

service Windows?images before deployment. You can use DISM image management commands to mount, and get information about, Windows image (.wim) files or virtual hard disks (VHD) and to capture, split, and otherwise manage .wim

files.

QUESTION 3



Your company has 2,000 desktop computers and 450 portable computers. The desktop computers run Windows 7 Enterprise (x64) and the portable computers run Windows 7 Professional (x86). The network contains a System Center 2012

Configuration Manager environment. You create a configuration baseline that is targeted to all of the computers.

You discover that you fail to receive compliance information for the configuration baseline from the portable computers.

You receive compliance information for the configuration baseline from the desktop computers.

You receive compliance information for other configuration baselines from all of the computers.

You need to ensure that you receive compliance information for the configuration baseline from all of the computers.

What should you do?

- A. Configure the configuration item to be evaluated on all Windows 7 operating systems.
- B. Create custom client settings for the portable computers and enable Compliance Settings.
- C. Create a collection containing the portable computers and assign the configuration baseline to the collection.
- D. Add the configuration item to a new configuration baseline.

Correct Answer: A

QUESTION 4

Your network contains a System Center 2012 Configuration Manager environment.

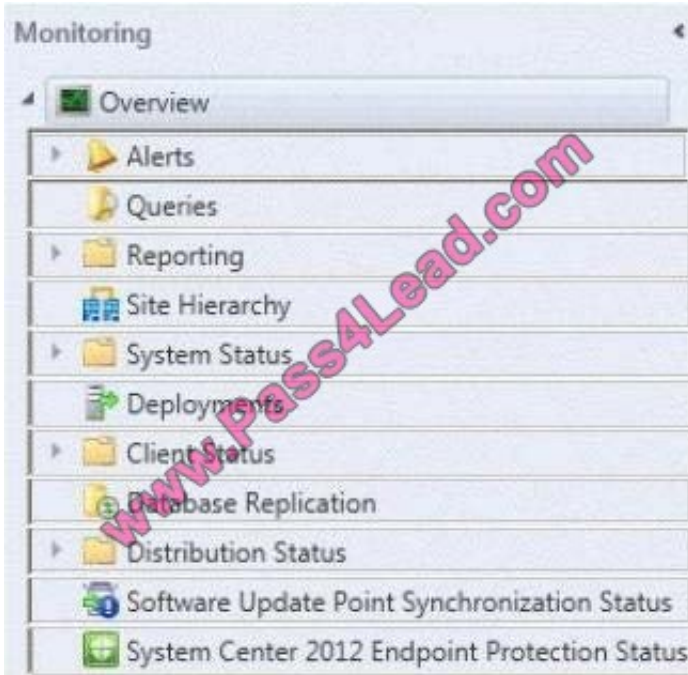
You deploy an application to 1,000 client computers.

You need to identify which client computers are in the process of installing the application.

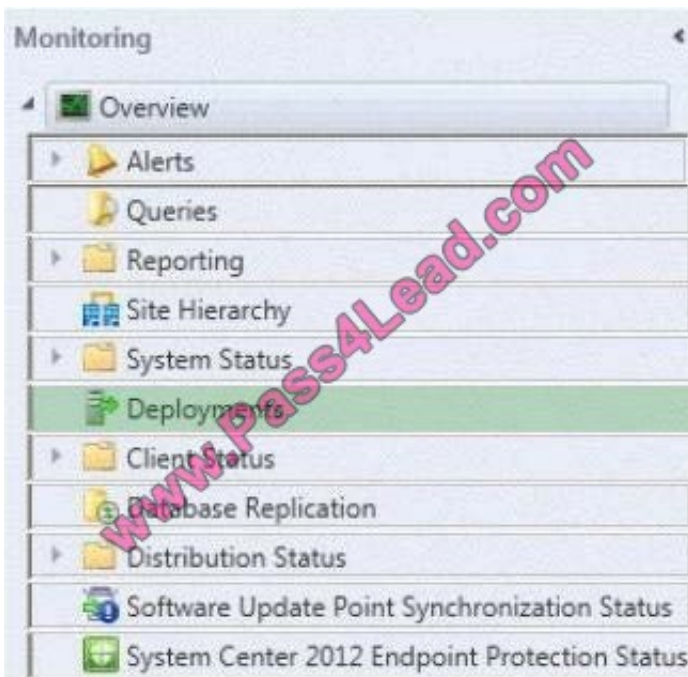
Which node should you select in the Configuration Manager console?

To answer, select the appropriate node in the answer area.

Hot Area:



Correct Answer:



To monitor the state of an application in the Configuration Manager console

1.

In the Configuration Manager console, click Monitoring.

2.

In the Monitoring workspace, click Deployments.



QUESTION 5

Your network contains a System Center 2012 R2 Configuration Manager Service Pack 1 (SP1) environment.

You deploy the Configuration Manager client to all client computers. You enable Hardware Inventory and Software Inventory for all of the client computers.

You discover that one of the client computers fails to report inventory data.

You confirm that the inventory files are copied correctly to the site server. You discover, however, that the site server does not contain any data from the client computer.

You need to identify what is causing the reporting issue.

Which log file should you review?

- A. Dataldr.log
- B. Mp_hinv.log
- C. Inventoryagent.log
- D. Contenttransfermanager.log

Correct Answer: A

Dataldr.log is a site server log file that records information about the processing of Management Information Format (MIF) files and hardware inventory in the Configuration Manager database.

[70-243 VCE Dumps](#)

[70-243 Practice Test](#)

[70-243 Study Guide](#)



To Read the [Whole Q&As](#), please purchase the [Complete Version](#) from [Our website](#).

Try our product !

100% Guaranteed Success

100% Money Back Guarantee

365 Days Free Update

Instant Download After Purchase

24x7 Customer Support

Average 99.9% Success Rate

More than 800,000 Satisfied Customers Worldwide

Multi-Platform capabilities - [Windows](#), [Mac](#), [Android](#), [iPhone](#), [iPod](#), [iPad](#), [Kindle](#)

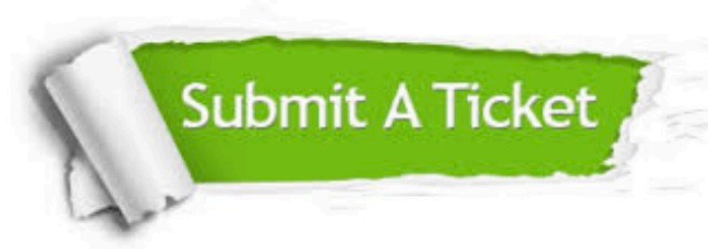
We provide exam PDF and VCE of Cisco, Microsoft, IBM, CompTIA, Oracle and other IT Certifications. You can view Vendor list of All Certification Exams offered:

<https://www.pass4lead.com/allproducts>

Need Help

Please provide as much detail as possible so we can best assist you.

To update a previously submitted ticket:



 <p>One Year Free Update Free update is available within One Year after your purchase. After One Year, you will get 50% discounts for updating. And we are proud to boast a 24/7 efficient Customer Support system via Email.</p>	 <p>Money Back Guarantee To ensure that you are spending on quality products, we provide 100% money back guarantee for 30 days from the date of purchase.</p>	 <p>Security & Privacy We respect customer privacy. We use McAfee's security service to provide you with utmost security for your personal information & peace of mind.</p>
---	---	--

Any charges made through this site will appear as Global Simulators Limited.

All trademarks are the property of their respective owners.

Copyright © pass4lead, All Rights Reserved.