



70-642^{Q&As}

TS: Windows Server 2008 Network Infrastructure

Pass Microsoft 70-642 Exam with 100% Guarantee

Free Download Real Questions & Answers **PDF** and **VCE** file from:

<https://www.pass4lead.com/70-642.html>

100% Passing Guarantee
100% Money Back Assurance

Following Questions and Answers are all new published by Microsoft
Official Exam Center

-  **Instant Download** After Purchase
-  **100% Money Back** Guarantee
-  **365 Days** Free Update
-  **800,000+** Satisfied Customers



**QUESTION 1**

Your company has an IPv6 network that has 25 segments. You deploy a server on the IPv6 network.

You need to ensure that the server can communicate with all segments on the IPv6 network.

What should you do?

- A. Configure the IPv6 address as fd00::2b0:d0ff:fee9:4143/8.
- B. Configure the IPv6 address as fe80::2b0:d0ff:fee9:4143/64.
- C. Configure the IPv6 address as ff80::2b0:d0ff:fee9:4143/64.
- D. Configure the IPv6 address as 0000::2b0:d0ff:fee9:4143/64.

Correct Answer: A

QUESTION 2

Your network contains two offices named Office1 and Office2. The offices connect to each other by using a demand-dial connection.

You add a new subnet in Office2.

You need to ensure that a demand-dial connection starts when users attempt to connect to resources in the new Office2 subnet.

What should you do from the Remote Routing and Access console?

- A. From the remote access server in Office2, right-click the demand-dial interface and click Connect.
- B. From the remote access server in Office1, right-click the demand-dial interface and click Connect.
- C. From the remote access server in Office1, right-click the demand-dial interface and click Update Routes.
- D. From the remote access server in Office2, right-click the demand-dial interface and click Update Routes.

Correct Answer: C

QUESTION 3

You have a file server that runs Windows Server 2008 R2.

You configure quotas on the server.

You need to view each user's quota usage on a per folder basis.

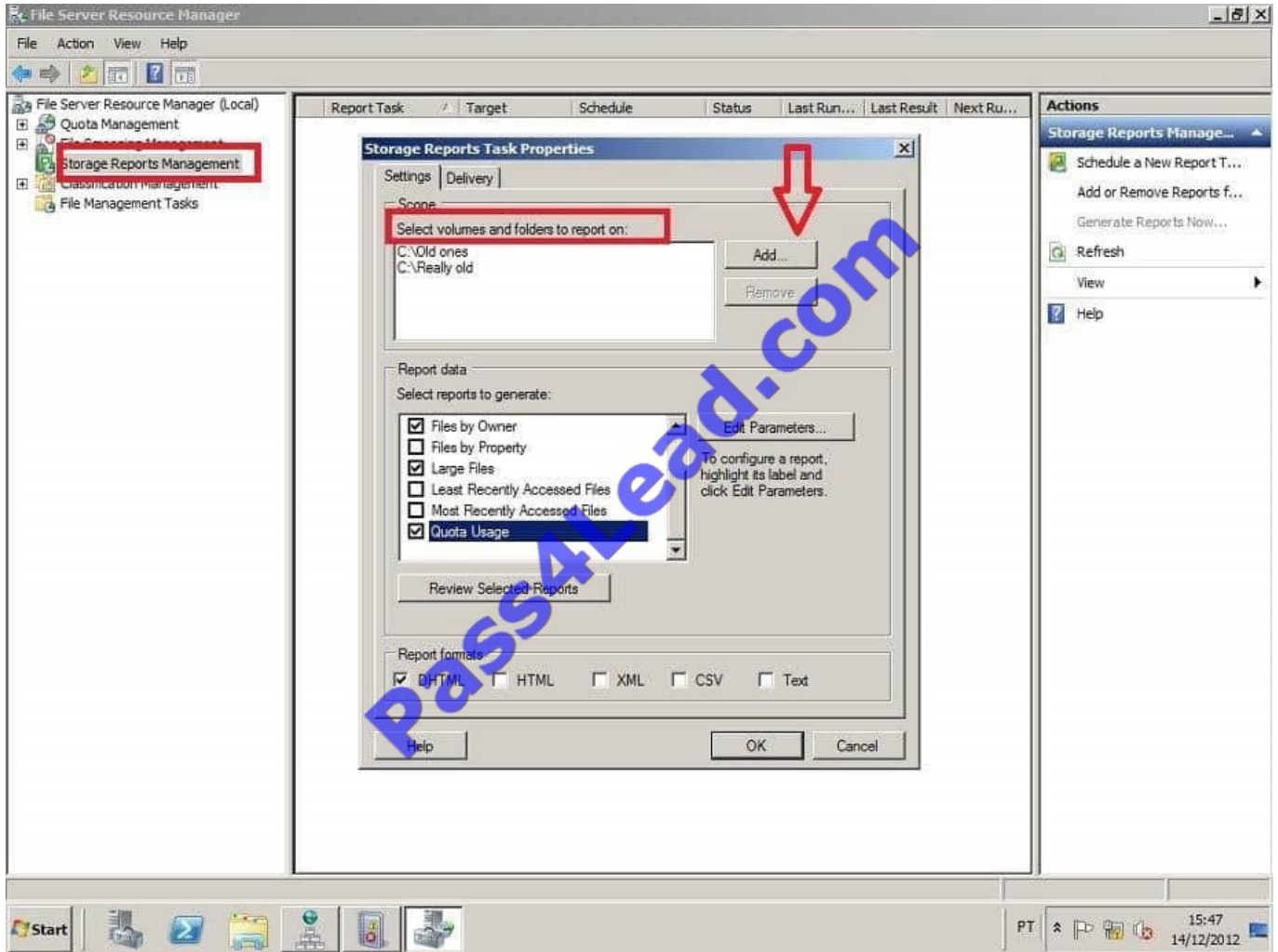
What should you do?

- A. From File Server Resource Manager, create a File Screen.



- B. From File Server Resource Manager, create a Storage Management report.
- C. From the command prompt, run dirquota.exe quota list.
- D. From the properties of each volume, review the Quota Entries list.

Correct Answer: B



QUESTION 4

Your network contains a Windows Server Update Services (WSUS) server named Server1. All client computers are configured to download updates from Server1.

Server1 is configured only to synchronize manually to Microsoft Update.

Your company deploys a new Microsoft application.

You discover that the new application is not listed on the Products and Classifications list.

You synchronize the WSUS server.



You need to ensure that updates for the new application are available to all of the client computers.

What should you do?

To answer, move the appropriate actions from the Possible Actions list to the Necessary Actions area and arrange them in the correct order.

Select and Place:

Possible Actions

- Add a computer group.
- Approve the updates.
- Move computers to a group.
- Synchronize the WSUS server.
- Run the Server Cleanup Wizard.
- Modify the Products and Classifications settings.

Necessary Actions

Correct Answer:

Possible Actions

- Add a computer group.
- Approve the updates.
- Move computers to a group.
- Run the Server Cleanup Wizard.

Necessary Actions

- Synchronize the WSUS server.
- Modify the Products and Classifications settings.
- Approve the updates.

QUESTION 5

Your network contains a single Active Directory domain. All servers run Windows Server 2008 R2. A DHCP server is deployed on the network and configured to provide IPv6 prefixes. You need to ensure that when you monitor network traffic, you see the interface identifiers derived from the Extended Unique Identifier (EUI)-64 address.



Which command should you run?

- A. netsh.exe interface ipv6 set global addressmaskreply=disabled
- B. netsh.exe interface ipv6 set global dhcpmediasense=enabled
- C. netsh.exe interface ipv6 set global randomizeidentifiers=disabled
- D. netsh.exe interface ipv6 set privacy state=enabled

Correct Answer: C

Starting Windows Vista, Windows Server 2008 and Windows 7, to prevent address scans of IPv6 addresses based on the known company IDs of network adapter manufacturers, Windows by default generate random interface IDs for non-temporary autoconfigured IPv6 addresses, including public and link-local addresses. A public IPv6 address is a global address that is registered in DNS and is typically used by server applications for incoming connections, such as a Web server. However, this can cause issues with some connection instances in which case you may need to disable this option.

To prevent Windows from using Random Identifiers,

1.

Click Start search "cmd", right-click and choose "Run as Administrator". This should launch the command window with elevated privileges.

2.

Run the following command:

C:\windows\system32> netsh interface ipv6 set global randomizeidentifiers=disabled At anytime later, you can enable this (if required) as follows:

C:\windows\system32> netsh interface ipv6 set global randomizeidentifiers=enabled

<http://www.windowsreference.com/networking/disable-ipv6-random-identifier-in-windows-7-server-2008-vista/>

[Latest 70-642 Dumps](#)

[70-642 VCE Dumps](#)

[70-642 Study Guide](#)



To Read the [Whole Q&As](#), please purchase the [Complete Version](#) from [Our website](#).

Try our product !

100% Guaranteed Success

100% Money Back Guarantee

365 Days Free Update

Instant Download After Purchase

24x7 Customer Support

Average 99.9% Success Rate

More than 800,000 Satisfied Customers Worldwide

Multi-Platform capabilities - [Windows](#), [Mac](#), [Android](#), [iPhone](#), [iPod](#), [iPad](#), [Kindle](#)

We provide exam PDF and VCE of Cisco, Microsoft, IBM, CompTIA, Oracle and other IT Certifications. You can view Vendor list of All Certification Exams offered:

<https://www.pass4lead.com/allproducts>

Need Help

Please provide as much detail as possible so we can best assist you.

To update a previously submitted ticket:



 <p>One Year Free Update Free update is available within One Year after your purchase. After One Year, you will get 50% discounts for updating. And we are proud to boast a 24/7 efficient Customer Support system via Email.</p>	 <p>Money Back Guarantee To ensure that you are spending on quality products, we provide 100% money back guarantee for 30 days from the date of purchase.</p>	 <p>Security & Privacy We respect customer privacy. We use McAfee's security service to provide you with utmost security for your personal information & peace of mind.</p>
---	---	--

Any charges made through this site will appear as Global Simulators Limited.

All trademarks are the property of their respective owners.

Copyright © pass4lead, All Rights Reserved.