



70-744^{Q&As}

Securing Windows Server 2016

Pass Microsoft 70-744 Exam with 100% Guarantee

Free Download Real Questions & Answers **PDF** and **VCE** file from:

<https://www.pass4lead.com/70-744.html>

100% Passing Guarantee
100% Money Back Assurance

Following Questions and Answers are all new published by Microsoft
Official Exam Center

-  **Instant Download** After Purchase
-  **100% Money Back** Guarantee
-  **365 Days** Free Update
-  **800,000+** Satisfied Customers





QUESTION 1

Your network contains an Active Directory domain named contoso.com. The domain contains a server named Server5 that has the Windows Server Update Services server role installed.

You need to configure Windows Server Update Services (WSUS) on Server5 to use SSI.

You install a certificate in the local Computer store.

Which two tools should you use? Each correct answer presents part of the solution.

- A. Wsusutil
- B. Netsh
- C. Internet Information Services (IIS) Manager
- D. Server Manager
- E. Update Services

Correct Answer: AC

By IIS Manager and "wsusutil configuressl" command <https://technet.microsoft.com/en-us/library/bb633246.aspx>To configure SSL on the WSUS server by using IIS 7.01) On the WSUS server, open Internet Information Services (IIS) Manager.2) Expand Sites, and then expand the Web site for the WSUS server. We recommend that you use the WSUSAdministration custom Web site, but the default Website might have been chosen when WSUS was being installed.3) Perform the following steps on the APIRemoting30, ClientWebService, DSSAuthWebService,ServerSyncWebService, and SimpleAuthWebService virtualdirectories that reside under the WSUS Web site.In Features View, double-click SSL Settings.On the SSL Settings page, select the Require SSL checkbox. Ensure that Client certificates is set to Ignore.In the Actions pane, click Apply.4) Close Internet Information Services (IIS) Manager.5) Run the following command from \\Tools: WSUSUtil.exe configuressl .

QUESTION 2

Note: This question is part of a series of questions that use the same or similar answer choices. An answer choice may be correct for more than one question in the series. Each question is independent of the other questions in this series. Information and details provided in a question apply only to that question.

Your network contains an Active Directory domain named contoso.com The domain contains a server named Server1 that runs Windows Server 2016.

Server1 has a shared folder named Share1.

You need to ensure that all access to Share1 uses SMB Encryption.

Which tool should you use?

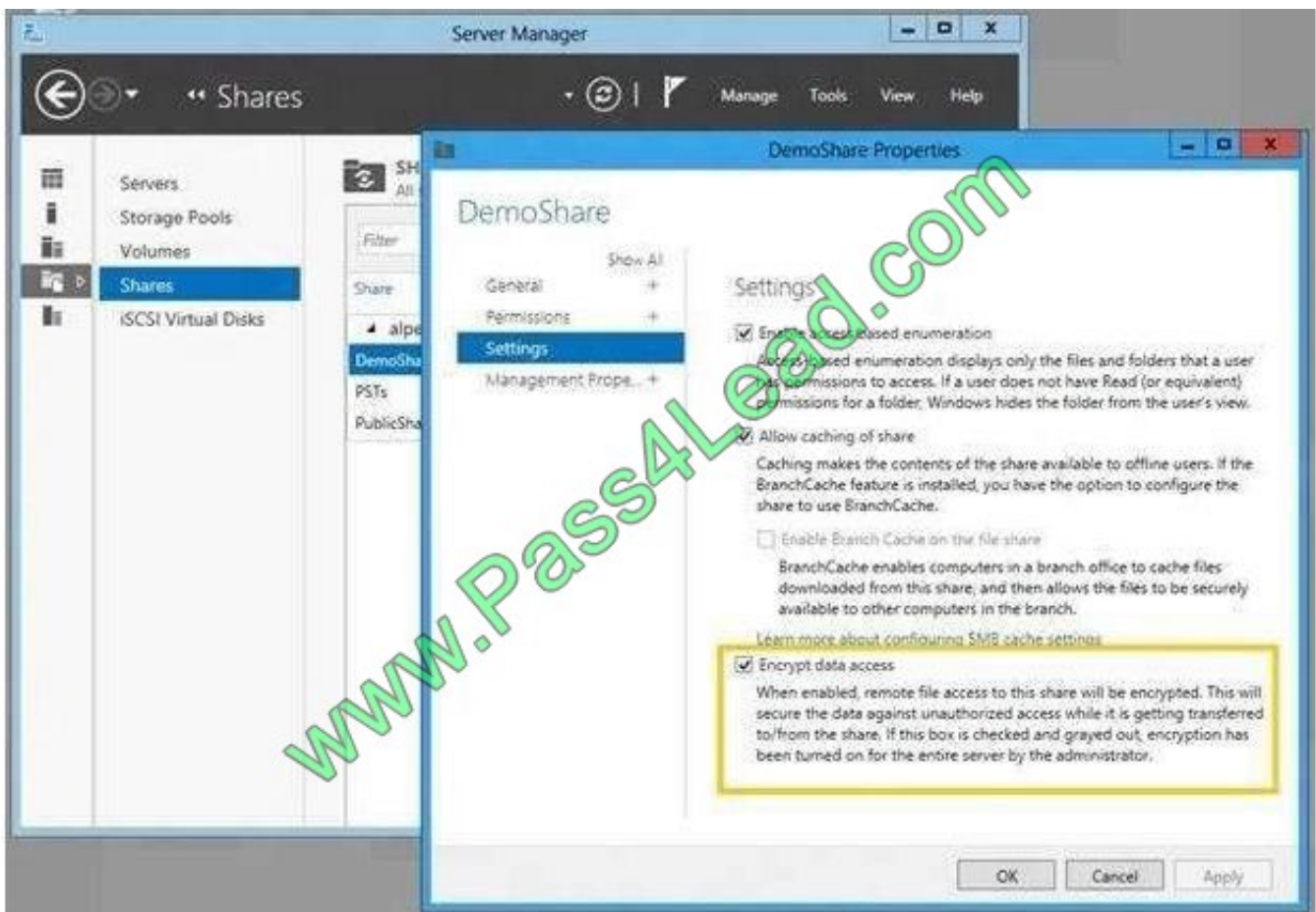
- A. File Explorer
- B. Shared Folders
- C. Server Manager



- D. Disk Management
- E. Storage Explorer
- F. Computer Management
- G. System Configuration
- H. File Server Resource Manager (FSRM)>

Correct Answer: C

<https://blogs.technet.microsoft.com/filecab/2012/05/03/smb-3-security-enhancements-in-windows-server-2012/>



QUESTION 3

Your network contains an Active Directory forest named contoso.com. The forest contains three domains. All domain controllers run Windows Server 2016.

You deploy a second Active Directory forest named admin.contoso.com.

The forest contains a domain member server named Server1. Server1 has Microsoft Identity Manager (MIM) 2016 deployed.

You need to implement Privileged Access Management (PAM) and to use admin.contoso.com as an administrative



forest.

Which two actions should you perform? Each correct answers presents part of the solution.

- A. From a domain controller in contoso.com. run the New-PAMTrust cmdlet.
- B. From Server1, run the New-PAMDomainConfiguration cmdlet
- C. From a domain controller in admin.contoso.com, run the New-PAMTrust cmdlet.
- D. From a domain controller in contoso.com, run the New-PAMDomainConfiguration cmdlet.
- E. From a domain controller in admin.contoso.com, run the New-PAMDomainConfiguration cmdlet
- F. From Server1, run the New-PAMTrust cmdlet

Correct Answer: BF

<https://docs.microsoft.com/en-us/microsoft-identity-manager/pam/configuring-mim-environment-for-pam>
<https://docs.microsoft.com/en-us/microsoft-identity-manager/pam/step-5-establish-trust-between-priv-corpforests>

Establish trust on PAMSRV

On PAMSRV, establish one-way trust with each domain such as CORPDC so that the CORP domain controllers trust the PRIV forest.

1. Sign in to PAMSRV as a PRIV domain administrator (PRIV\Administrator).
2. Launch PowerShell.
3. Type the following PowerShell commands for each existing forest. Enter the credential for the CORP domain administrator (CONTOSO\Administrator) when prompted.

```
$ca = get-credential  
New-PAMTrust -SourceForest "contoso.local" -Credentials $ca
```

4. Type the following PowerShell commands for each domain in the existing forests. Enter the credential for the CORP domain administrator (CONTOSO\Administrator) when prompted.

```
$ca = get-credential  
New-PAMDomainConfiguration -SourceDomain "contoso" -Credentials $ca
```

**QUESTION 4**

You are creating a Nano Server image for the deployment of 10 servers.

You need to configure the servers as guarded hosts that use Trusted Platform Module (TPM) attestation.

Which three packages should you include in the Nano Server image? Each correct answer presents part of the solution.

- A. Microsoft-NanoServer-SecureStartup-Package
- B. Microsoft-NanoServer-ShieldedVM-Package
- C. Microsoft-NanoServer-Storage-Package
- D. Microsoft-NanoServer-SCVMM-Compute-Package
- E. Microsoft-NanoServer-SCVMM-Package
- F. Microsoft-NanoServer-Compute-Package

Correct Answer: ABF

<https://docs.microsoft.com/en-us/system-center/vmm/guarded-deploy-host?toc=/windows-server/virtualization/toc.json> For an SCVMM Managed Nano Server Hyper-V case: If your host is running Nano Server Hyper-V host, it should have the Compute, SCVMM-Package, SCVMMCompute, SecureStartup, and ShieldedVM packages installed. <https://docs.microsoft.com/en-us/windows-server/get-started/deploy-nano-server> For an standalone Nano Server Hyper-V host, no SCVMM related packages are required, only Compute, SecureStartup, and ShieldedVM packages are required. This table shows the roles and features that are available in this release of Nano Server, along with the Windows PowerShell options that will install the packages for them. Some packages are installed directly with their own Windows PowerShell switches (such as -Compute); others you install by passing package names to the package parameter, which you can combine in a comma-separated list. You can dynamically list available packages using the Get-NanoServerPackage cmdlet.



Role or feature	Option
Hyper-V role (including NetQoS)	-Compute
Failover Clustering and other components, detailed after this table	-Clustering
Basic drivers for a variety of network adapters and storage controllers. This is the same set of drivers included in a Server Core installation of Windows Server 2016.	-OEMDrivers
File Server role and other storage components, detailed after this table	-Storage
Windows Defender, including a default signature file	-Defender
Reverse forwarders for application compatibility, for example common application frameworks such as Ruby, Node.js, etc.	Now included by default
DNS Server role	-Package Microsoft-NanoServer-DNS-Package
PowerShell Desired State Configuration (DSC)	-Package Microsoft-NanoServer-DSC-Package Note: For full details, see Using DSC on Nano Server.
Internet Information Server (IIS)	-Package Microsoft-NanoServer-IIS-Package Note: See IIS on Nano Server for details about working with IIS.
Host support for Windows Containers	-Containers
System Center Virtual Machine Manager agent	-Package Microsoft-NanoServer-SCVMM-Package -Package Microsoft-NanoServer-SCVMM-Compute-Package Note: Use the SCVMM Compute package only if you are monitoring Hyper-V. For hyper-converged deployments in VMM, you should also specify the -Storage parameter. For more details, see the VMM documentation.
System Center Operations Manager agent	Installed separately. See the System Center Operations Manager documentation for more details at https://technet.microsoft.com/en-us/system-center-docs/om/manage/install-agent-on-nano-server .
Data Center Bridging (including DCBQoS)	-Package Microsoft-NanoServer-DCB-Package
Deploying on a virtual machine	-Package Microsoft-NanoServer-Guest-Package
Deploying on a physical machine	-Package Microsoft-NanoServer-Host-Package
BitLocker, trusted platform module (TPM), volume encryption, platform identification, cryptography providers, and other functionality related to secure startup	-Package Microsoft-NanoServer-SecureStartup-Package
Hyper-V support for Shielded VMs	-Package Microsoft-NanoServer-ShieldedVM-Package Note: This package is only available for the Datacenter edition of Nano Server.

QUESTION 5

Your network contains an Active Directory domain named contoso.com. The domain contains a DNS server named Server1 that runs Windows Server 2016.

A domain-based Group Policy object (GPO) is used to configure the security policy of Server1.

You plan to use Security Compliance Manager (SCM) 4.0 to compare the security policy of Server1 to the WS2012 DNS



Server Security 1.0 baseline.

You need to import the security policy into SCM. What should you do first?

- A. From Security Configuration and Analysis, use the Export Template option.
- B. Run the Copy-GPO cmdlet and specify the -TargetName parameter.
- C. Run the Backup-GPO cmdlet and specify the -Path parameter.
- D. Run the secedit.exe command and specify the/export parameter.

Correct Answer: C

<https://technet.microsoft.com/en-us/library/ee461052.aspx> Backup-GPO cmdlet and specify the -Path parameter creates a GPO backup folder with GUID name and issuitable to import to SCM 4.0

[70-744 VCE Dumps](#)

[70-744 Study Guide](#)

[70-744 Braindumps](#)



To Read the [Whole Q&As](#), please purchase the [Complete Version](#) from [Our website](#).

Try our product !

100% Guaranteed Success

100% Money Back Guarantee

365 Days Free Update

Instant Download After Purchase

24x7 Customer Support

Average 99.9% Success Rate

More than 800,000 Satisfied Customers Worldwide

Multi-Platform capabilities - [Windows](#), [Mac](#), [Android](#), [iPhone](#), [iPod](#), [iPad](#), [Kindle](#)

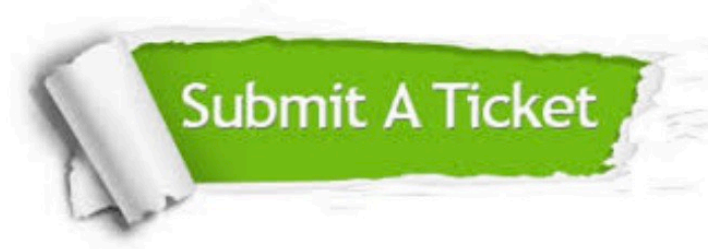
We provide exam PDF and VCE of Cisco, Microsoft, IBM, CompTIA, Oracle and other IT Certifications. You can view Vendor list of All Certification Exams offered:

<https://www.pass4lead.com/allproducts>

Need Help

Please provide as much detail as possible so we can best assist you.

To update a previously submitted ticket:



 <p>One Year Free Update Free update is available within One Year after your purchase. After One Year, you will get 50% discounts for updating. And we are proud to boast a 24/7 efficient Customer Support system via Email.</p>	 <p>Money Back Guarantee To ensure that you are spending on quality products, we provide 100% money back guarantee for 30 days from the date of purchase.</p>	 <p>Security & Privacy We respect customer privacy. We use McAfee's security service to provide you with utmost security for your personal information & peace of mind.</p>
---	---	--

Any charges made through this site will appear as Global Simulators Limited.

All trademarks are the property of their respective owners.

Copyright © pass4lead, All Rights Reserved.