



70-744^{Q&As}

Securing Windows Server 2016

Pass Microsoft 70-744 Exam with 100% Guarantee

Free Download Real Questions & Answers **PDF** and **VCE** file from:

<https://www.pass4lead.com/70-744.html>

100% Passing Guarantee
100% Money Back Assurance

Following Questions and Answers are all new published by Microsoft
Official Exam Center

-  **Instant Download** After Purchase
-  **100% Money Back** Guarantee
-  **365 Days** Free Update
-  **800,000+** Satisfied Customers



**QUESTION 1**

Note: This question is part of a series of questions that use the same or similar answer choices. An answer choice may be correct for more than one question in the series. Each question is independent of the other questions in this series.

Information and details provided in a question apply only to that question.

Your network contains an Active Directory domain named contoso.com. The domain contains a server named Server1 that runs Windows Server 2016 and a Nano Server named Nano1.

Nano1 has two volumes named C and D.

You are signed in to Server1.

You need to configure Data Deduplication on Nano1.

Which tool should you use?

- A. File Explorer
- B. Shared Folders
- C. Server Manager
- D. Disk Management
- E. Storage Explorer
- F. Computer Management
- G. System Configuration
- H. File Server Resource Manager (FSRM)

Correct Answer: C

Either use PowerShell Remoting to Nano1 and use "Enable-DedupVolume" cmdlet, however, there is no such choice for this question; or from Server1, connect it to Nano1's server manager to remotely manage Nano1 and enable Data Deduplication for volumes on Nano1 <https://channel9.msdn.com/Series/Nano-Server-Team/Server-Manager-managing-Nano-Server>



To assign a central access policy to a file server

1. In Hyper-V Manager, connect to server FILE1. Log on to the server by using contoso\administrator with the password: **pass@word1**.
2. Open an elevated command prompt and type: **gpupdate /force**. This ensures that your Group Policy changes take effect on your server.
3. You also need to refresh the Global Resource Properties from Active Directory. Open an elevated Windows PowerShell window and type `Update-FSRMClassificationpropertyDefinition`. Click ENTER, and then close Windows PowerShell.

Tip

You can also refresh the Global Resource Properties by logging on to the file server. To refresh the Global Resource Properties from the file server, do the following

- a. Logon to File Server FILE1 as contoso\administrator, using the password **pass@word1**.
- b. Open File Server Resource Manager. To open File Server Resource Manager, click **Start**, type **file server resource manager**, and then click **File Server Resource Manager**.
- c. In the File Server Resource Manager, click **File Classification Management**, right-click **Classification Properties** and then click **Refresh**.

4. Open **Windows Explorer**, and in the left pane, click drive D. Right-click the **Finance Documents** folder, and click **Properties**.
5. Click the **Classification** tab, click **Country**, and then select **US** in the **Value** field.
6. Click **Department**, then select **Finance** in the **Value** field and then click **Apply**.

Note

Remember that the central access policy was configured to target files for the Department of Finance. The previous steps mark all documents in the folder with the Country and Department attributes.

7. Click the **Security** tab, and then click **Advanced**. Click the **Central Policy** tab.
8. Click **Change**, select **Finance Policy** from the drop-down menu, and then click **Apply**. You can see the **Finance Documents Rule** listed in the policy. Expand the item to view all of the permissions that you set when you created the rule in Active Directory.

QUESTION 2

Your network contains an Active Directory domain named contoso.com. The domain contains servers that run Windows Server 2016.

You enable Remote Credential Guard on a server named Server1.



You have an administrative computer named Computer1 that runs Windows 10.

Computer1 is configured to require Remote Credential Guard.

You sign in to Computer1 as Contoso\User1.

You need to establish a Remote Desktop session to Server1 as Contoso\ServerAdmin1.

What should you do first?

- A. Install the Universal Windows Platform (UWP) Remote Desktop application
- B. Turn on virtualization based security
- C. Run the mstsc.exe /remoteGuard
- D. Sign in to Computer1 as Contoso\ServerAdmin1

Correct Answer: D

When Computer1 is configured to require Remote Credential Guard, you cannot use NTLM authentication to specify (or impersonate) another user account when connecting to Server1. Therefore, you have to sign in to Computer1 as "ServerAdmin1" and use Kerberos for authenticating to RDPserver "Server1" when Remote Credential Guard is required.

QUESTION 3

Note: This question is part of a series of questions that use the same scenario. For your convenience, the scenario is repeated in each question. Each question presents a different goal and answer choices, but the text of the scenario is exactly the same in each question in this series.

Start of repeated scenario

Your network contains an Active Directory domain named contoso.com. The functional level of the forest and the domain is Windows Server 2008 R2.

The domain contains the servers configured as shown in the following table.

Server name	Configuration
Nano1	Nano Server
Nano2	Nano Server
Server2	File server that has a shared folder named DATA
Server3	DNS server that has a DNSSEC-signed zone named adatum.com
Server4	Hyper-V host
Server1	Application server

All servers run Windows Server 2016. All client computers run Windows 10.

You have an organizational unit (OU) named Marketing that contains the computers in the marketing department. You have an OU named Finance that contains the computers in the finance department. You have an OU named



AppServers

that contains application servers. A Group Policy object (GPO) named GP1 is linked to the Marketing OU. A GPO named GP2 is linked to the AppServers OU.

You install Windows Defender on Nano1.

End of repeated scenario

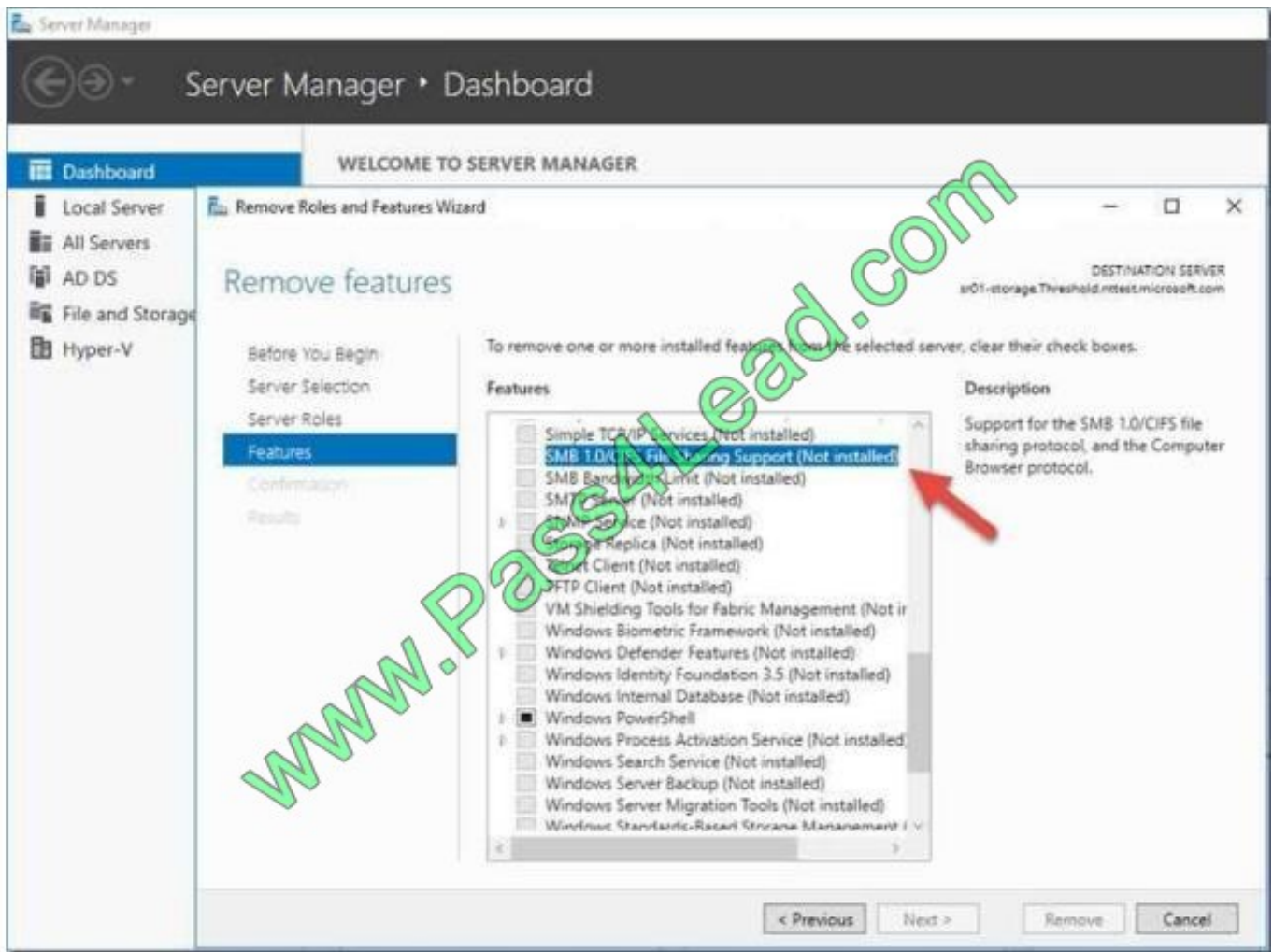
You need to disable SMB 1.0 on Server2.

What should you do?

- A. From File Server Resource Manager, create a classification rule.
- B. From the properties of each network adapter on Server2, modify the bindings.
- C. From Windows PowerShell, run the Set -SmbClientConfiguration cmdlet.
- D. From Server Manager, remove a Windows feature.

Correct Answer: D

<https://support.microsoft.com/en-us/help/2696547/how-to-enable-and-disable-smbv1-smbv2-and-smbv3-in-windows-and-windows>



QUESTION 4

HOTSPOT

You plan to implement Windows Defender Device Guard in your datacenter.

You build a model server that contains all the drivers and the software that you want to deploy and secure.

You need to create a new policy to ensure that only whitelisted files can be loaded to the servers. The policy must be in enforcement mode.

How should you complete the commands? To answer, select the appropriate options in the answer area.

NOTE: Each correct selection is worth one point.

Hot Area:



	▼
Add-SignerRule	
New-CIPolicy	
New-CIPolicyRule	
Set-RuleOption	

-Level FilePublisher -Fallback Hash -UserPEs -FilePath C:\CINLockdown.xml

	▼
Add-SignerRule	
New-CIPolicy	
New-CIPolicyRule	
Set-RuleOption	

-FilePath C:\CINLockdown.xml -Option 3 -delete

Correct Answer:

	▼
Add-SignerRule	
New-CIPolicy	
New-CIPolicyRule	
Set-RuleOption	

-Level FilePublisher -Fallback Hash -UserPEs -FilePath C:\CINLockdown.xml

	▼
Add-SignerRule	
New-CIPolicy	
New-CIPolicyRule	
Set-RuleOption	

-FilePath C:\CINLockdown.xml -Option 3 -delete

QUESTION 5

Note: This question is part of a series of questions that present the same scenario. Each question in the series contains a unique solution that might meet the stated goals. Some question sets might have more than one correct solution, while

others might not have a correct solution.

After you answer a question in this sections, you will NOT be able to return to it. As a result, these questions will not appear in the review screen.

You manage a file server that runs Windows Server 2016. The file server contains the volumes configured as shown in the following table.



Volume label	Volume letter	Size(TB)	Format
System	C	4	NTFS
HRFiles	H		NTFS
SalesFiles	J	8	ReFS
DevFiles	K	10	NTFS
BackUp	L	6	ReFS

You need to encrypt DevFiles by using BitLocker Drive Encryption (ButLocker).

Solution: You run the Enable-BitLocker cmdlet.

Does this meet the goal?

- A. Yes
- B. No

Correct Answer: A

References: <https://docs.microsoft.com/en-us/powershell/module/bitlocker/enable-bitlocker?view=win10-ps>

[Latest 70-744 Dumps](#)

[70-744 Exam Questions](#)

[70-744 Braindumps](#)



To Read the [Whole Q&As](#), please purchase the [Complete Version](#) from [Our website](#).

Try our product !

100% Guaranteed Success

100% Money Back Guarantee

365 Days Free Update

Instant Download After Purchase

24x7 Customer Support

Average 99.9% Success Rate

More than 800,000 Satisfied Customers Worldwide

Multi-Platform capabilities - [Windows](#), [Mac](#), [Android](#), [iPhone](#), [iPod](#), [iPad](#), [Kindle](#)

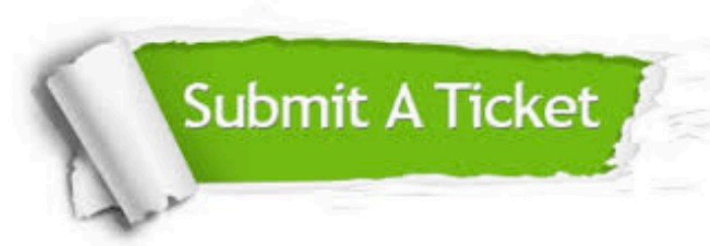
We provide exam PDF and VCE of Cisco, Microsoft, IBM, CompTIA, Oracle and other IT Certifications. You can view Vendor list of All Certification Exams offered:

<https://www.pass4lead.com/allproducts>

Need Help

Please provide as much detail as possible so we can best assist you.

To update a previously submitted ticket:



 <p>One Year Free Update Free update is available within One Year after your purchase. After One Year, you will get 50% discounts for updating. And we are proud to boast a 24/7 efficient Customer Support system via Email.</p>	 <p>Money Back Guarantee To ensure that you are spending on quality products, we provide 100% money back guarantee for 30 days from the date of purchase.</p>	 <p>Security & Privacy We respect customer privacy. We use McAfee's security service to provide you with utmost security for your personal information & peace of mind.</p>
---	---	--

Any charges made through this site will appear as Global Simulators Limited.

All trademarks are the property of their respective owners.

Copyright © pass4lead, All Rights Reserved.