



74-338^{Q&As}

Lync 2013 Depth Support Engineer

Pass home 74-338 Exam with 100% Guarantee

Free Download Real Questions & Answers **PDF** and **VCE** file from:

<https://www.pass4lead.com/74-338.html>

100% Passing Guarantee
100% Money Back Assurance

Following Questions and Answers are all new published by home
Official Exam Center

-  **Instant Download** After Purchase
-  **100% Money Back** Guarantee
-  **365 Days** Free Update
-  **800,000+** Satisfied Customers





QUESTION 1

You administer Microsoft Lync Server 2013 servers in your customer's company network. All network computers are members of an Active Directory Domain Services (AD DS) domain that is operating in Windows Server 2008 domain

functional mode. Client computers have various versions of Office Communicator R2 and the Lync client installed.

You enable Lync Server 2013 enhanced presence privacy mode. Several users inform you that their presence and contact information is available to users who have not been authorized to view it.

You need to prevent non-authorized users from accessing the personal information of other users. You also need to continue providing Lync access to all users.

Which three actions should you perform in sequence? (To answer, move the appropriate three actions from the list of actions to the answer area and arrange them in the correct order.)

Select and Place:

	Answer Area
Define a new client version policy that prevents Office Communicator from signing in.	
Disable and then re-enable the enhanced presence privacy mode.	
Upgrade Office Communicator to Lync client.	
Instruct users to sign in to Lync client and restore privacy settings.	
Raise the domain functional level to Windows Server 2008 R2.	
Raise the domain functional level to Windows Server 2012.	

Correct Answer:



	Answer Area
	Upgrade Office Communicator to Lync client.
Disable and then re-enable the enhanced presence privacy mode.	Define a new client version policy that prevents Office Communicator from signing in.
	Instruct users to sign in to Lync client and restore privacy settings.
Raise the domain functional level to Windows Server 2008 R2.	
Raise the domain functional level to Windows Server 2012.	

QUESTION 2

You support Microsoft Lync Server 2013 servers in your customer's company network. You plan to configure Extensible Messaging and Presence Protocol (XMPP) federation with an instant messaging partner.

The XMPP federated partner supports only:

You need to configure the negotiation settings for the XMPP federated partner.

Which options should you configure for each negotiation method? (To answer, configure the appropriate options in the dialog box in the answer area.)

Hot Area:



External Access Policy | Access Edge Configuration | SIP Federated Domains | SIP Federated Providers | **SIP Federated Partners**

Commit | Cancel

Additional domains:

Type a valid domain name, and then click Add. Add

Remove

Partner type:

Federated
Public Verified
Public Unverified

Connection type:

TLS negotiation:

Required
Optional
Not Supported

SASL negotiation:

Required
Optional
Not Supported

Support server dialback negotiations:

True
False

Correct Answer:



External Access Policy | Access Edge Configuration | SIP Federated Domains | SIP Federated Providers | **SIP Federated Partners**

Commit | Cancel

Additional domains:
Type a valid domain name, and then click Add. [Add]
[Remove]

Partner type:
Federated
Public Verified
Public Unverified

Connection type:
TLS negotiation:
Required
Optional
Not Supported

SASL negotiation:
Required
Optional
Not Supported

Support server dialback negotiations:
True
False

www.Pass4Lead.com

QUESTION 3

You support a customer who is deploying Microsoft Lync Server 2013. The customer has completed deployment of the following components:

Neither federation nor external access is enabled.

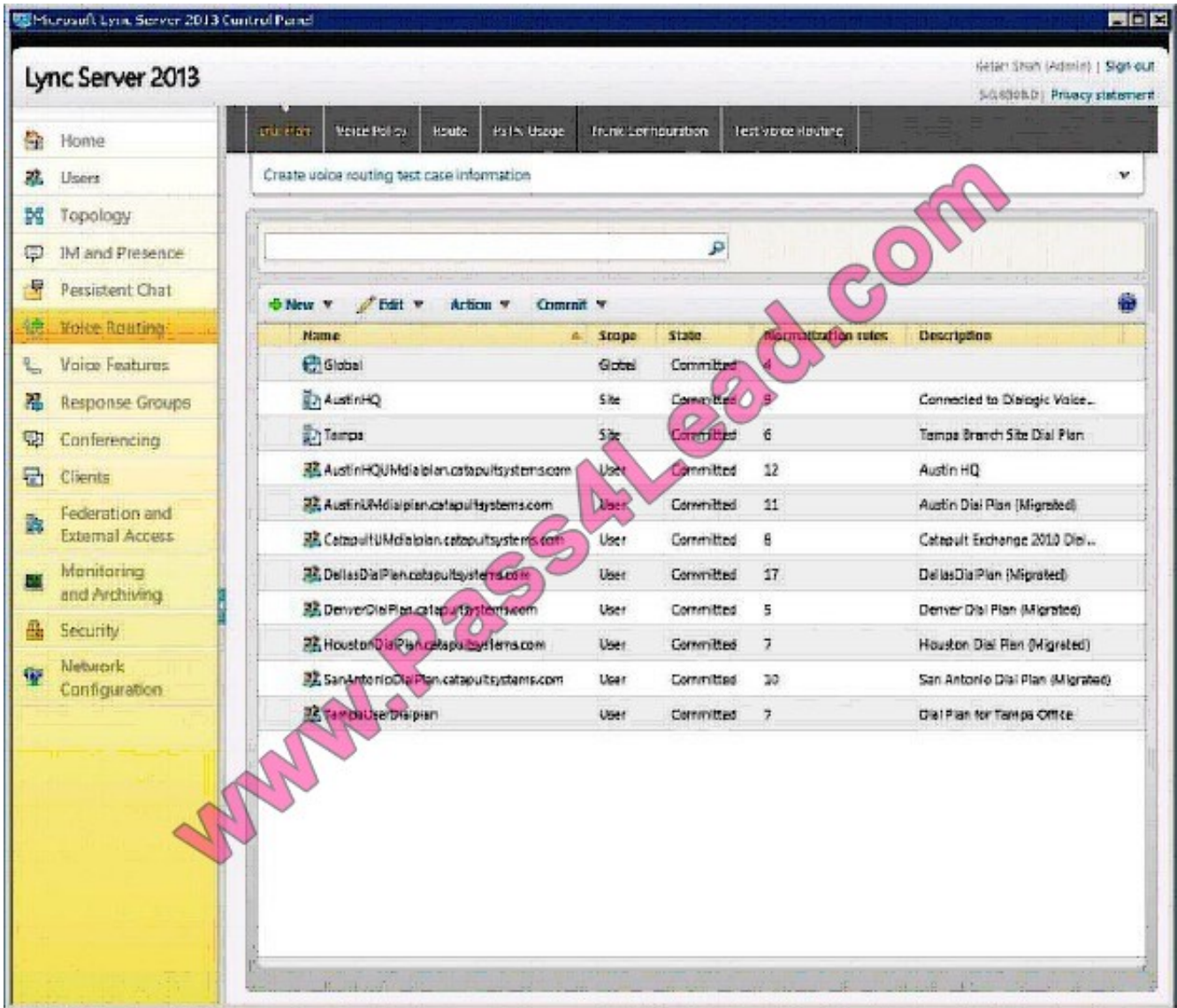
The customer installs a number of Lync 2013 clients on pilot user computers that are located inside their network. No



one is able to access the Lync server from outside the network.

The pilot users report the following issues:

You need to ensure that users in the customer's network can successfully have calls with users outside the network. You open the Voice Routing tab on the Lync Server Control Panel as shown in the exhibit. (Click the Exhibit button.)



Which area should you look in to investigate each issue? (To answer, drag the appropriate voice routing area to the correct issue investigation or investigations. Each voice routing area may be used once or not at all. You may need to drag the split bar between panes or scroll to view content.)

Select and Place:



Voice routing area	Voice routing issue	
voice routing	When users make local calls, the calls fail and an announcement states that you must not dial a 1 to make local calls. You start troubleshooting this issue without complicating dial plans and checking ...	
user dial plan normalization rule	Caller ID information is incorrect. You start troubleshooting this issue by examining ...	
route	The phone number does not match to contacts. You start troubleshooting this issue by looking at ...	
calling number translation rules in trunk configuration		
voice policy		
test voice routing		
called number translation rules in trunk configuration		

Correct Answer:



Voice routing area	Voice routing issue	
voice routing	When users make local calls, the calls fail and an announcement states that you must not dial a 1 to make local calls. You start troubleshooting this issue without complicating dial plans and checking ...	called number translation rules in trunk configuration
route	Caller ID information is incorrect. You start troubleshooting this issue by examining ...	calling number translation rules in trunk configuration
voice policy	The phone number does not match to contacts. You start troubleshooting this issue by looking at ...	user dial plan normalization rule
test voice routing		

QUESTION 4

You are a member of the CsAdministrator group that supports the Microsoft Lync datacenter for the Contoso company. The datacenter consists of two pools:

You are migrating from Microsoft Lync Server 2010 to Microsoft Lync Server 2013.

The servers that run ConPool01 suffer a catastrophic failure.

You need to ensure that the users that are hosted on ConPool02 are supported permanently on ConPool02.

What should you do?

A. Run the Get-CsDatabaseMirrorState cmdlet, and then run the Invoke-CSManagementServerFailover PowerShell cmdlet.

B. Run the Invoke-CsPoolFailover PowerShell cmdlet.



C. Run the Set-CsConfigurationStoreLocation cmdlet.

D. Run the Install-CsDatabase PowerShell cmdlet, and then run the Move-CsManagementServer cmdlet.

Correct Answer: D

QUESTION 5

You support a customer who is upgrading from Lync 2010 Group Chat to Lync 2013 Persistent Chat. Users are Session Initiation Protocol (SIP) enabled members of a single Active Directory Domain Services (AD DS) domain.

Group Chat clients connect by using a well-known user named ocschat@litwareinc.com. The Lookup service registers with the Lync server to receive incoming requests.

Your customer's Persistent Chat pool fully qualified domain name (FQDN) is named pchatpool.litwareinc.com.

When users sign out of Lync and then sign in again by using the Lync 2010 Group Chat client, they are able to access their data without needing to change any configuration.

You need to configure Lync Server 2013 persistent chat to support legacy Group Chat clients.

Which cmdlet should you run?

A. `New-CsTrustedApplicationEndpoint -ApplicationId pchat -TrustedApplicationPoolFqdn pchatpool.litware.com -SipAddress sip:ocschat@litwareinc.com`

B. `New-CsPersistentChatEndpoint -SipAddress sip:ocschat@litwareinc.com -PersistentChatPoolFqdn pchatpool.litware.com`

C. `Set-CsPersistentChatRoom -Identity IT -Presenters @{Add="sip:ocschat(g)litwareinc.com"}`

D. `$cred1 = Get-Credential "litwareinc\pilar">$cred2 = Get-Credential "litwareinc\ocschat"Test-CsPersistentChatMessage -TargetFqdn pchatpool.litwareinc.com - SenderSipAddress "sip:pilar@litwareinc.com" -SenderCredential $cred1 -ReceiverSipAddress "sip:ocschat@litwareinc.com" -ReceiverCredential $cred2`

Correct Answer: B

[Latest 74-338 Dumps](#)

[74-338 Exam Questions](#)

[74-338 Braindumps](#)



To Read the [Whole Q&As](#), please purchase the [Complete Version](#) from [Our website](#).

Try our product !

100% Guaranteed Success

100% Money Back Guarantee

365 Days Free Update

Instant Download After Purchase

24x7 Customer Support

Average 99.9% Success Rate

More than 800,000 Satisfied Customers Worldwide

Multi-Platform capabilities - [Windows](#), [Mac](#), [Android](#), [iPhone](#), [iPod](#), [iPad](#), [Kindle](#)

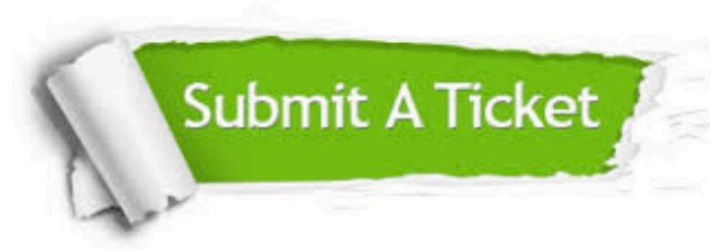
We provide exam PDF and VCE of Cisco, Microsoft, IBM, CompTIA, Oracle and other IT Certifications. You can view Vendor list of All Certification Exams offered:

<https://www.pass4lead.com/allproducts>

Need Help

Please provide as much detail as possible so we can best assist you.

To update a previously submitted ticket:



 <p>One Year Free Update Free update is available within One Year after your purchase. After One Year, you will get 50% discounts for updating. And we are proud to boast a 24/7 efficient Customer Support system via Email.</p>	 <p>Money Back Guarantee To ensure that you are spending on quality products, we provide 100% money back guarantee for 30 days from the date of purchase.</p>	 <p>Security & Privacy We respect customer privacy. We use McAfee's security service to provide you with utmost security for your personal information & peace of mind.</p>
---	---	--

Any charges made through this site will appear as Global Simulators Limited.

All trademarks are the property of their respective owners.

Copyright © pass4lead, All Rights Reserved.