

# 9A0-142<sup>Q&As</sup>

Adobe InDesign CS5 ACE Exam

## Pass Adobe 9A0-142 Exam with 100% Guarantee

Free Download Real Questions & Answers **PDF** and **VCE** file from:

<https://www.pass2lead.com/9a0-142.html>

100% Passing Guarantee  
100% Money Back Assurance

Following Questions and Answers are all new published by Adobe  
Official Exam Center

- ⚙️ **Instant Download** After Purchase
- ⚙️ **100% Money Back** Guarantee
- ⚙️ **365 Days** Free Update
- ⚙️ **800,000+** Satisfied Customers



### QUESTION 1

You are creating a document in InDesign CS5. You choose Optimized Original Images or Optimized Formatted Images in the Images tab of the Export XML dialog box.

Which of the following options will you choose to specify which file format to use for the converted image?

- A. JPEG Options
- B. GIF Options
- C. Image Conversion
- D. GIF conversion

Correct Answer: C

The Image Conversion option specifies which file format to use for the converted image. If you choose Automatic, InDesign chooses the best file type based on the image. Further, you may also want to specify both GIF and JPEG Options.

Answer: B is incorrect. GIF Options specify the formatting for images that are converted into the GIF format when exported to XML. Answer: A is incorrect. JPEG Options specify the formatting for images that are converted into the JPEG format when exported to XML. Answer: D is incorrect. There is no such option in the Images tab of the Export XML dialog box.

---

### QUESTION 2

You have created a table in your InDesign document. You want to paste a graphic in a cell of the table. To accomplish this task you have selected the cell by pressing Esc key and then pasted the graphic.

What will happen?

- A. The cell will be eliminated from the table.
- B. The graphic will be pasted in the more than one cell in the table.
- C. The graphic will not be pasted in the cell.
- D. The graphic will be pasted in the cell.

Correct Answer: C

You should place a graphic in a table cell in exactly the same way as you insert a graphic in text. Click the Type tool in a cell, or select some text inside a cell, then place a file or paste a graphic that you copied to the Clipboard. You must select text or have an active text insertion point because selecting the cell itself will not get the graphic into the cell. In the above scenario you selected only the cell and not the text inside the cell; this is why graphic is not pasted in the table cell.

---

### QUESTION 3

You are creating a book in InDesign CS5. If you select the Automatic Document Conversion menu option in the book panel's flyout menu, what will happen?

- A. InDesign will convert all chapters into the XML format.
- B. InDesign will convert all pages of the book into the master page.
- C. InDesign will convert all chapters created in the earlier versions of InDesign into the InDesign CS5 format.
- D. InDesign will convert all chapters created in the current version of InDesign into the InDesign's earlier version format.

Correct Answer: C

If the Automatic Document Conversion menu option is selected in the book panel's flyout menu, InDesign converts all chapters created in the earlier versions of InDesign into the InDesign CS5 format.

Answer: B, D, and A are incorrect. These three options are not valid in the given scenario.

---

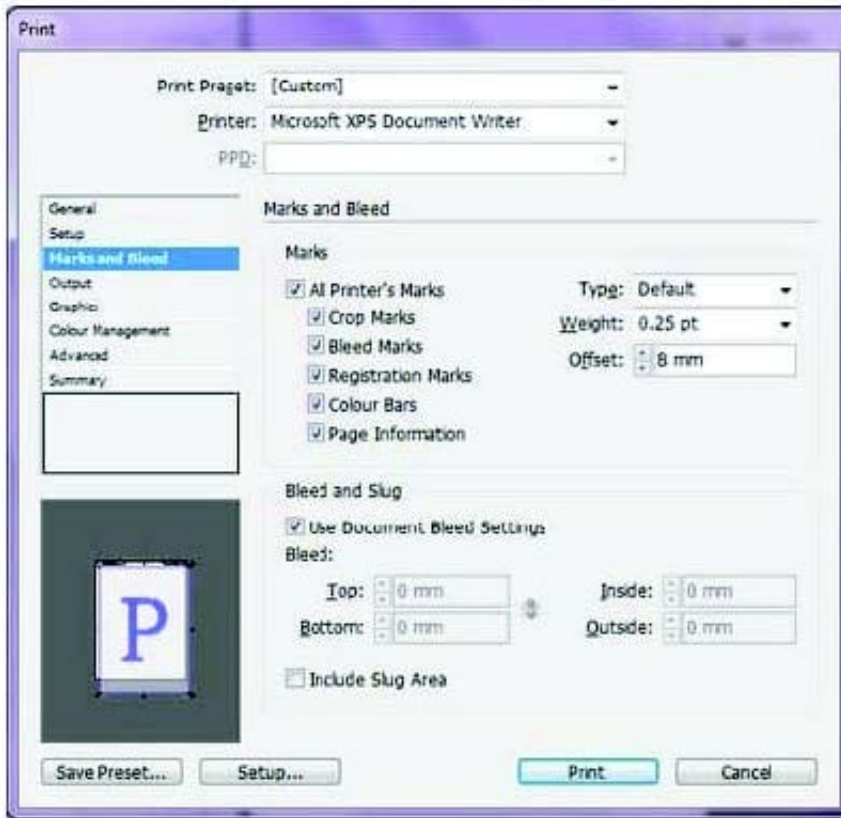
#### QUESTION 4

What will you do if you want to place crop marks 8 mm from the trim edge when printing?

- A. Choose File > Document Setup > Click the More Options button, and enter 8 mm as the Slug value.
- B. Select the All Printer's Marks checkbox in the Marks and Bleed pane of the Print Dialog Box and set the Offset field to 8 mm.
- C. Uncheck Use Document Bleed Settings and enter values from 0 to 6 inches for Top, Bottom, Left, and Right for single-sided documents.
- D. Uncheck Use Document Bleed Settings and enter values from 0 to 6 inches for Top, Bottom, Inside, and Outside for double-sided documents with facing pages.

Correct Answer: B

If you want to place crop marks 8 mm from the trim edge while printing, you will Select the All Printer's Marks checkbox in the Marks and Bleed pane of the Print Dialog Box, and set the Offset field to 8 mm.



### QUESTION 5

Which of the following can you check by using the Separations Preview panel? Each correct answer represents a complete solution. Choose all that apply.

- A. Rich black
- B. Overprinting
- C. Ink coverage
- D. Varnishes and other coatings

Correct Answer: ABCD

You can check the following areas by using the Separations Preview panel: Varnishes and other coatings. Since varnishes are transparent, they can be difficult to preview on a screen. When a user previews a varnish separation by himself, the varnished areas appear in black. Rich black. Previewing separation allows a user to identify areas that will print as rich black, or process black (K) ink mixed with color inks for increased opacity and richer colors. Ink coverage Too much of ink on the paper can cause drying problems. Overprinting. Previewing this will allow a user to see how blending, transparency, and overprinting will appear in a color-separated output.