

9A0-142^{Q&As}

Adobe InDesign CS5 ACE Exam

Pass Adobe 9A0-142 Exam with 100% Guarantee

Free Download Real Questions & Answers **PDF** and **VCE** file from:

<https://www.pass2lead.com/9a0-142.html>

100% Passing Guarantee
100% Money Back Assurance

Following Questions and Answers are all new published by Adobe
Official Exam Center

-  **Instant Download** After Purchase
-  **100% Money Back** Guarantee
-  **365 Days** Free Update
-  **800,000+** Satisfied Customers



QUESTION 1

Which of the following tools can be used to create basic shapes?

- A. Polygon tool
- B. Rectangle frame tool
- C. Ellipse frame tool
- D. Polygon frame tool

Correct Answer: A

Following are the various objects that can be created with InDesign's object-creation tools.

1. Straight lines created by using the Line tool
 2. Lines and shapes created by using the Pen tool or the Pencil tool
 3. Basic shapes created by using Ellipse, Rectangle, and Polygon
 4. Basic frames created by using Ellipse Frame, Rectangle Frame, and Polygon Frame
-

QUESTION 2

You have created a table in InDesign. You are editing text in the cells of a table.

What will you do to move the cursor from one cell to the next cell in the table without using the mouse?

- A. Press the arrows
- B. Press the F2 key
- C. Press the backspace key
- D. Press the Tab key

Correct Answer: D

To move the cursor from one cell to next cell in the table without using the mouse, press the Tab key.

QUESTION 3

Mark is a regular user of InDesign CS5. He has an XML file, a DTD file, and a completed InDesign file from a previous XML project. He wants to use the same XML tags and structure in a new InDesign document.

Which method will he use to reproduce the tag names in the new InDesign file?

- A. Choose Window > Tag > select Load DTD from the Tags Panel menu > select a DTD file to import, and click Open.

B. Choose Window > Tag > select Load Tags from the Tags Panel menu and then select the previous InDesign file and click Open to load the XML tags.

C. Select the previous InDesign file > select the Autotag option from the Tag panel menu.

D. Choose Window > Tag > select Load Tags from the Structure panel menu > select the XML file > click Open.

Correct Answer: B

To use the same XML tags and structure in a new InDesign document from a previous file, Mark will choose Window > Tag > select Load Tags from the Tags Panel menu > select the previous InDesign file, and click Open to load the XML tags.

QUESTION 4

Which of the following features allows you to change the shape of an object in an InDesign document?

A. Pathfinder panel

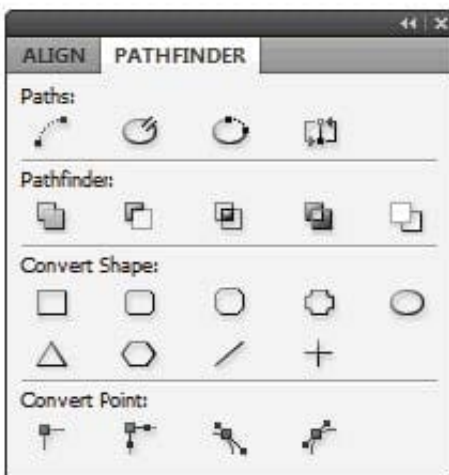
B. Preflight panel

C. Stroke panel

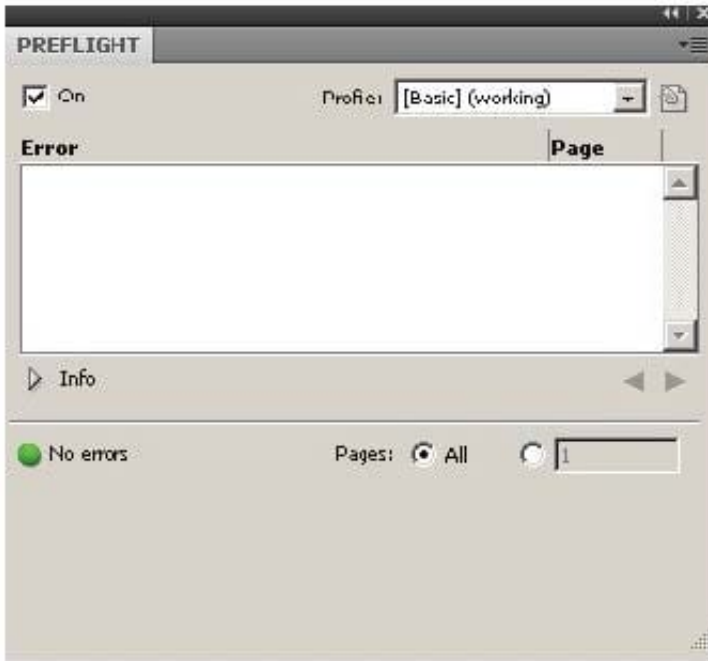
D. Swatches panel

Correct Answer: A

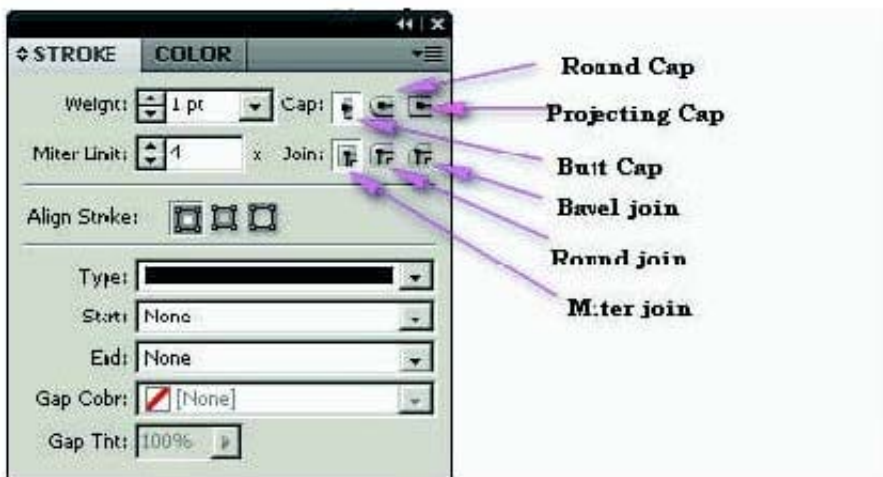
The Pathfinder panel is used to combine selected objects into new shapes. This panel can be opened by choosing Window > Object and Layout > Pathfinder.



Answer: B is incorrect. The Preflight panel is a feature of InDesign CS5 that warns of the problems that could prevent a document or book from printing or outputting as expected while a document is being edited. These problems include missing files or fonts, low-resolution images, overset text, and a number of other conditions. The preflight settings can be configured to define which conditions are detected. These preflight settings are stored in preflight profiles for easy reuse. To open the Preflight panel, choose Window > Output > Preflight, and double-click the Preflight icon at the bottom of the document window. The Preflight icon is green if no errors are detected or red if errors are detected. The Preflight panel is shown in the image below.



Answer: C is incorrect. The Stroke panel allows a user to modify the strokes applied to objects. The attributes of this panel affect how the path of an object looks. This panel can be opened by choosing Window > Stroke. Its keyboard shortcut is Ctrl+F10. It provides the following options to change the stroke of a selected object: Cap. It refers to the end of an open line. Following types of caps are available: Butt cap. It creates squared ends that abut (stop at) the endpoints. Round cap. It creates semi-circular ends that extend half the stroke width beyond the endpoints. Projecting cap. It creates squared ends that extend half the stroke width beyond the endpoints. This option makes the stroke weight extend evenly in all directions around the path. Join. It specifies the appearance of the stroke at corner points. Following types of joins are available. Miter join. It creates pointed corners that extend beyond the endpoint when the miter's length is within the miter limit. Round join. It creates rounded corners that extend half the stroke width beyond the endpoints. Bevel join. It creates squared corners that abut the endpoints.



Stroke panel

Answer: D is incorrect. The Swatches panel stores colors. It is used to import, export, delete, and modify the color

palette. Besides, a user can store custom colors in the Swatches panel. To add a color in the Swatches panel, move the cursor to the empty area of the Swatches panel (the cursor will change into the paint bucket) and click. To access the Swatches panel, select Window > Swatches.

QUESTION 5

You work as a Design Expert for KBC Inc. You have created an artwork that is restricted to two Pantone spot colors. When it got printed, you noticed that there are some objects using Cyan and Magenta colors in your document.

How can you detect these objects before printing?

- A. Choose Window > Output > Flattener Preview panel.
- B. Click on the info icon in the Preflight panel.
- C. Select the Overprint Preview checkbox in the Separations Preview panel, then turn off visibility for the Pantone colors.
- D. Choose Window > Swatches.

Correct Answer: C

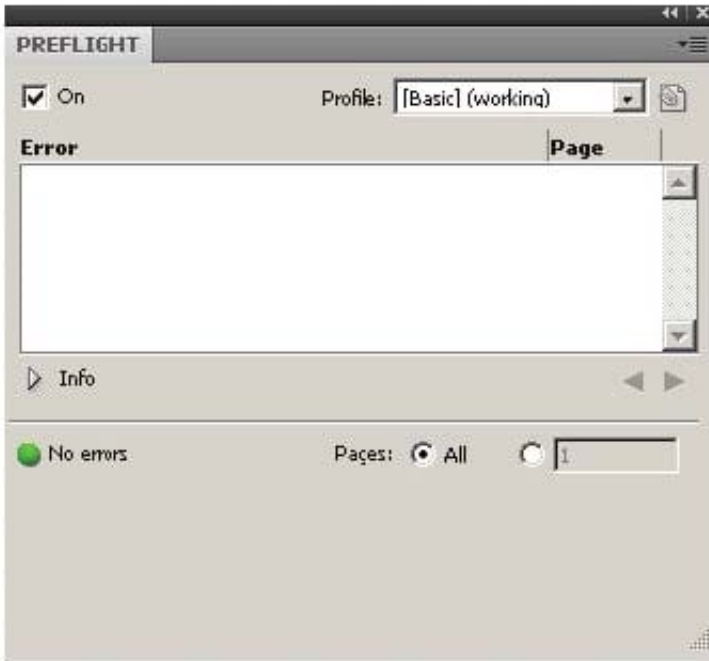
The Separations Preview panel is used to preview color separations on monitor before printing to avoid unexpected spot colors and unwanted overprinting. The Separations Preview panel allows a user to easily turn colors on and off so that it can be seen how blending, transparency, and overprinting will appear in color separated output. The Separations Preview panel can be displayed by choosing Window > Out put > Separations Preview or pressing Shift+F6.



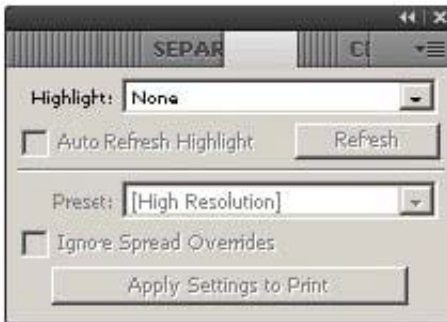
Separations Preview panel

You can hide or view a separation ink on the screen by clicking the eye icon in the left of the separation name. To hide or view all separation inks on screen except one, press Alt and click the eye icon for that separation. To view all process plates at once, click the CMYK icon. The normal view can be returned by deselecting the Overprint Preview. Answer: D is incorrect. The Swatches panel stores colors. It is used to import, export, delete, and modify the color palette. Besides, a user can store custom colors in the Swatches panel. To add a color in the Swatches panel, move the cursor to the empty area of the Swatches panel (the cursor will change into the paint bucket) and click. To access the Swatches panel, select Window > Swatches. Answer: B is incorrect. The Preflight panel is a feature of InDesign CS5 that warns of the problems that could prevent a document or book from printing or outputting as expected while a document is being edited. These problems include missing files or fonts, low-resolution images, overset text, and a number of other conditions. The preflight settings can be configured to define which conditions are detected. These preflight settings are stored in preflight profiles for easy reuse. To open the Preflight panel, choose Window > Output > Preflight, and double-click the Preflight icon at the bottom of the document window. The Preflight icon is green if no errors are detected or red

if errors are detected. The Preflight panel is shown in the image below.



Answer: A is incorrect. The Flattener Preview panel is used to see what page items (typically those with transparency) are flattened (made solid) during printing or exporting to Encapsulated PostScript (EPS), Scalable Vector Graphics (SVG, a vector format for the Web), or Portable Document Format (PDF) format. Flattening occurs for printing devices and graphics export formats that do not support transparency. To open the Flattener Preview panel, Choose Window > Output > Flattener.



Flattener Preview panel

[9A0-142 PDF Dumps](#)

[9A0-142 Study Guide](#)

[9A0-142 Exam Questions](#)