

9A0-389^{Q&As}

Adobe Campaign Developer

Pass Adobe 9A0-389 Exam with 100% Guarantee

Free Download Real Questions & Answers **PDF** and **VCE** file from:

<https://www.pass2lead.com/9a0-389.html>

100% Passing Guarantee
100% Money Back Assurance

Following Questions and Answers are all new published by Adobe
Official Exam Center

- ⚙️ **Instant Download** After Purchase
- ⚙️ **100% Money Back** Guarantee
- ⚙️ **365 Days** Free Update
- ⚙️ **800,000+** Satisfied Customers



QUESTION 1

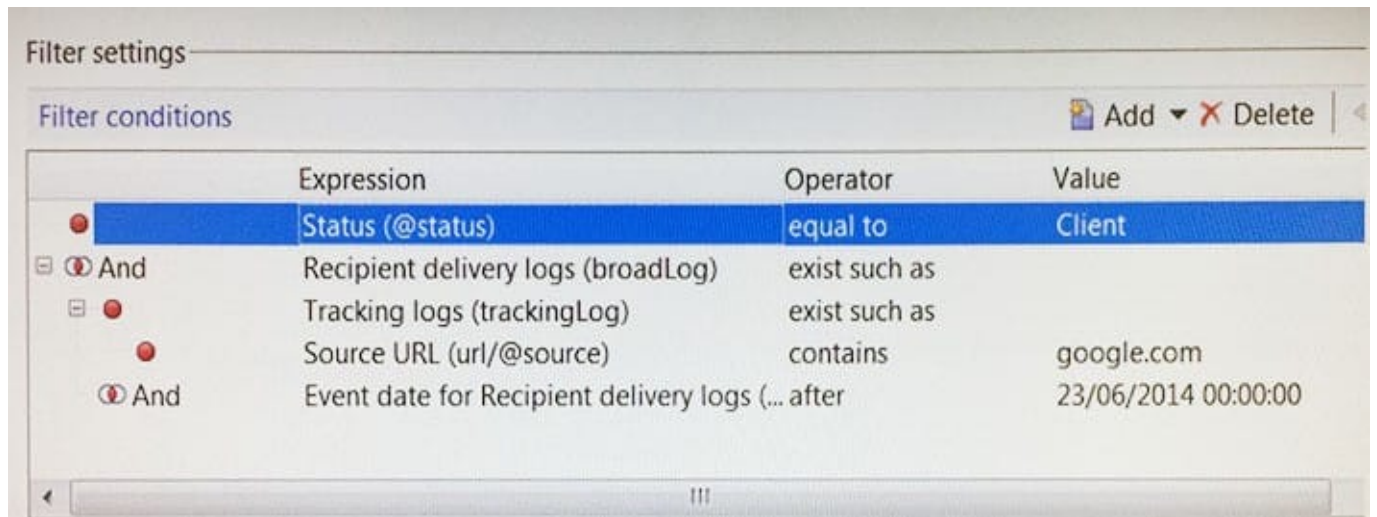
How would you set up the query of a predefined filter in order to get all recipients with blacklisted email addresses?

- A. no longer contact by direct mail or no longer contact by email or status for info on the e-mail equal to Quarantine
- B. no longer contact (by any channel) or no longer contact by email or status for info on the e-mail equal to Blacklisted
- C. no longer contact (by any channel) and no longer contact by email and status for info on the e-mail equal to Blacklisted
- D. no longer contact by direct mail and no longer contact by phone and status for info on the e-mail equal to Quarantine

Correct Answer: B

QUESTION 2

Which two parts of this query could potentially cause performance problems? (Choose two.)



The screenshot shows a 'Filter settings' window with a 'Filter conditions' table. The table has four columns: Expression, Operator, and Value. The first row is highlighted in blue and contains: Status (@status), equal to, Client. The second row is an 'And' condition with a red dot icon, containing: Recipient delivery logs (broadLog), exist such as. The third row is a sub-condition with a red dot icon, containing: Tracking logs (trackingLog), exist such as. The fourth row is a sub-condition with a red dot icon, containing: Source URL (url/@source), contains, google.com. The fifth row is a sub-condition with a red dot icon, containing: Event date for Recipient delivery logs (... after), 23/06/2014 00:00:00.

	Expression	Operator	Value
	Status (@status)	equal to	Client
And	Recipient delivery logs (broadLog)	exist such as	
And	Tracking logs (trackingLog)	exist such as	
And	Source URL (url/@source)	contains	google.com
And	Event date for Recipient delivery logs (... after		23/06/2014 00:00:00

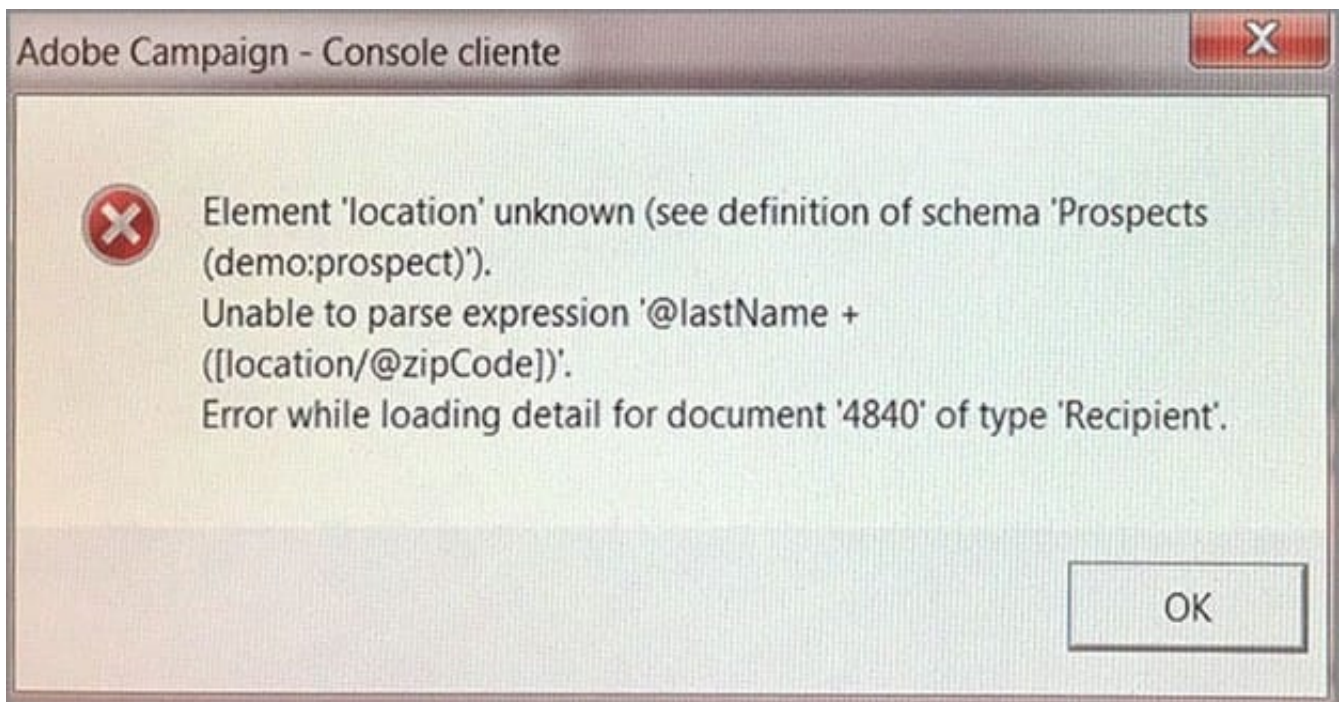
- A. The "equal to" operator is not efficient.
- B. The "url" is a table with high volumes.
- C. The "tracking log" is a table with high volumes.
- D. The "exist such as" operator is not efficient.

Correct Answer: CD

QUESTION 3

A new schema is defined. This error appears when the schema is saved. What is the reason for this error?

```
<srcSchema name="prospect namespace="demo"/>
  <element name="prospect">
    <key name="email">
      <keyfield xpath="@email"/>
    </key>
    <compute-string expr="@lastName + [location/@zipCode]"/>
    <attribute length="50" name="email" type="string"/>
    <attribute length="20" name="lastName" type="string"/>
    <attribute length="20" name="firstName" type="string"/>
    <attribute name="zipCode" type="short"/>
  </element>
</srcSchema>
```



- A. The location element is incorrect.
- B. The compute-string is incorrect.
- C. The type of the zip code attribute is incorrect.
- D. The prospect does not have a zip code.

Correct Answer: C

QUESTION 4

A user receives an Adobe Campaign email notification where they are informed that approval is needed for a certain delivery. The user logs into the Adobe Campaign console and wants to approve the mentioned delivery via the delivery dashboard but the approval link is NOT displayed there.

What would cause the approval link to NOT be shown?

- A. The delivery has already been approved by another operator.
- B. The user needs to belong to the "Delivery operators" group in order to see the link.
- C. Only the link provided in the email notification can be used to approve the delivery.
- D. The content of the delivery needs to be approved by another operator first.

Correct Answer: A

QUESTION 5

You want to add the following new columns to the output of a direct mail file extract:

-

Firstparturl is already declared in a JavaScripts activity which will be executed before the targeting query:

```
vars.firstparturl = `http://www.amazingcompany.com/u=\`;
```

The additional column for recipient called John Doe should look like this: `http://www.amazingcompany.com/u=John-Doe`

How would you have created the expression in the query activity (Additional columns window) in order to meet the above mentioned requirement?

- A. ``vars.firstparturl\`+vars.firstName+\`-`+vars.lastName`
- B. `$(vars/@firstparturl)+@firstName+\`-`+@lastName`
- C. `$(vars.firstparturl)+firstName+\`-`+lastName`
- D. ``vars.firstparturl\`+$(vars/@firstName)+\`-`+$(vars/@lastName)`

Correct Answer: D

[9A0-389 PDF Dumps](#)

[9A0-389 VCE Dumps](#)

[9A0-389 Practice Test](#)