

A00-270^{Q&As}

SAS BI Content Development

Pass SASInstitute A00-270 Exam with 100% Guarantee

Free Download Real Questions & Answers **PDF** and **VCE** file from:

<https://www.pass2lead.com/a00-270.html>

100% Passing Guarantee
100% Money Back Assurance

Following Questions and Answers are all new published by SASInstitute Official Exam Center

-  **Instant Download** After Purchase
-  **100% Money Back** Guarantee
-  **365 Days** Free Update
-  **800,000+** Satisfied Customers



QUESTION 1

The required components of a SAS BI Dashboard are:

- A. Data Model, Range, Indicator, and Dashboard
- B. Data Model, OLAP Cube, Indicator, and Dashboard
- C. Information Map, Indicator, Range, and Dashboard
- D. Data Model, Stored Process, Indicator, Range, and Dashboard

Correct Answer: A

QUESTION 2

Which tables can be a source table for an information map?

- A. Tables in the default authentication domain
- B. Tables registered in metadata
- C. Tables on the server where the cube is created
- D. Tables on the server where the workspace server executes

Correct Answer: B

QUESTION 3

Refer to the exhibit.



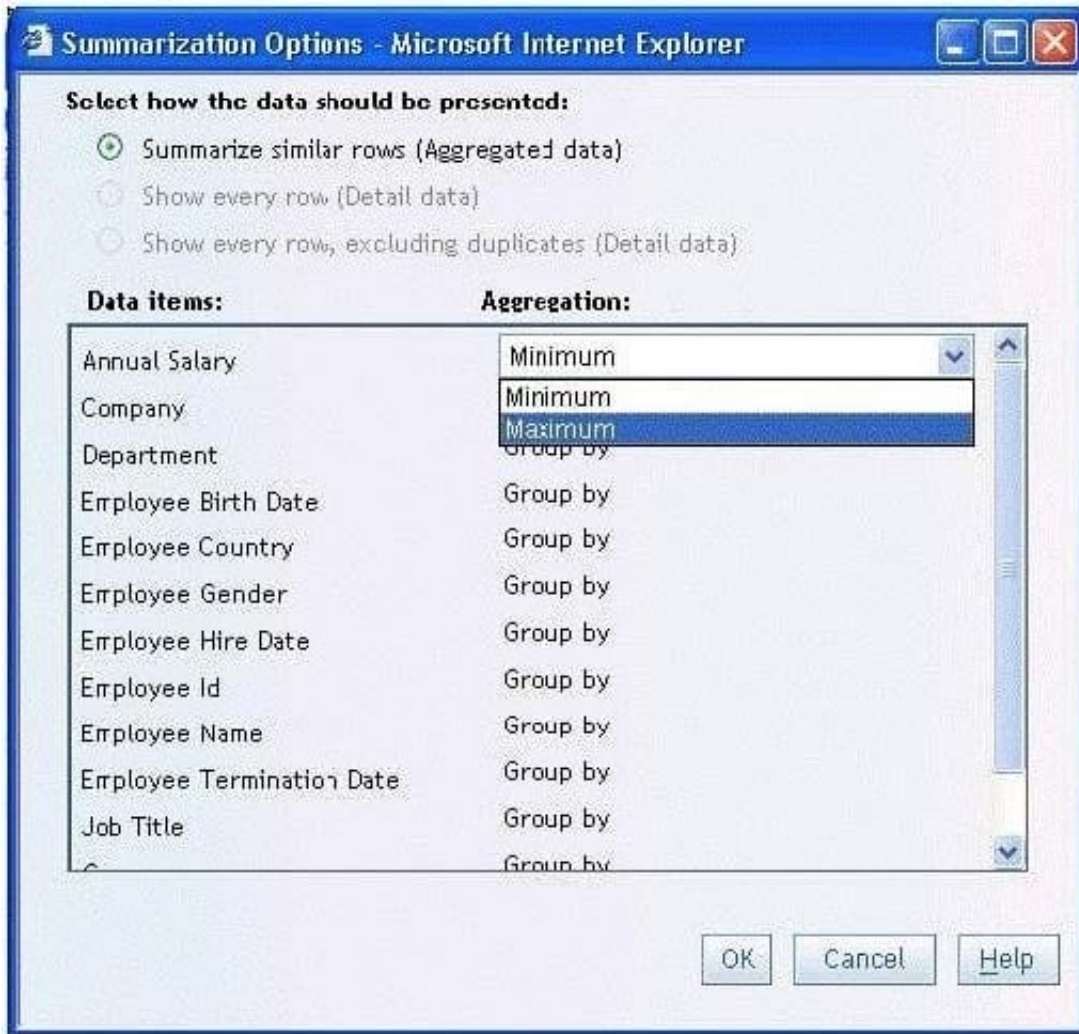
A user is running a stored process from a SAS Web Report Studio report. The stored process has a cascading prompt requesting the user to select Country then Department. The user attempts to select a value but the drop down for Country is empty. Why are the values for the prompt missing?

- A. The user does not have permission to the prompt.
- B. The user does not have permission to the prompt source data.
- C. The user does not have permission to the stored process.
- D. The user does not have permission to the Stored Process Server.

Correct Answer: B

QUESTION 4

Refer to Exhibit: A SAS Web Report Studio user is changing the summarization option for Annual Salary and the only aggregations allowed are Minimum and Maximum. Why is the list limited to only these two choices?



- A. The user is assigned to a role that only allows these aggregations.
- B. SAS Web Report Studio only supports these aggregations.
- C. These are the only aggregations supported for currency data items.
- D. The information map creator has limited the available aggregations.

Correct Answer: D

QUESTION 5

In SAS Information Map Studio, how are cascading prompts created?

- A. Create a compound filter with prompts and establish dependencies between prompts
- B. Use the cascading prompt wizard located on the tools menu
- C. Create individual filters and link them together on the relationships tab
- D. Create individual prompted filters and establish dependencies between filters option

Correct Answer: D

[Latest A00-270 Dumps](#)

[A00-270 PDF Dumps](#)

[A00-270 Practice Test](#)