

BH0-004^{Q&As}

ISEB ISTQB Certificate in Software Testing

Pass ISEB BH0-004 Exam with 100% Guarantee

Free Download Real Questions & Answers **PDF** and **VCE** file from:

<https://www.pass2lead.com/bh0-004.html>

100% Passing Guarantee
100% Money Back Assurance

Following Questions and Answers are all new published by ISEB
Official Exam Center

-  **Instant Download** After Purchase
-  **100% Money Back** Guarantee
-  **365 Days** Free Update
-  **800,000+** Satisfied Customers



QUESTION 1

A thermometer measures temperature in whole degrees only. If the temperature falls below 18 degrees, the heating is switched off. It is switched on again when the temperature reaches 21 degrees. What are the best values in degrees to cover all equivalence partitions?

- A. 15, 19 and 25.
- B. 17, 18, and 19.
- C. 18, 20 and 22.
- D. 16, 26, and 32.

Correct Answer: A

QUESTION 2

As part of which test process do you determine the exit criteria?

- A. Test planning.
- B. Evaluating exit criteria and reporting.
- C. Test closure.
- D. Test control.

Correct Answer: A

QUESTION 3

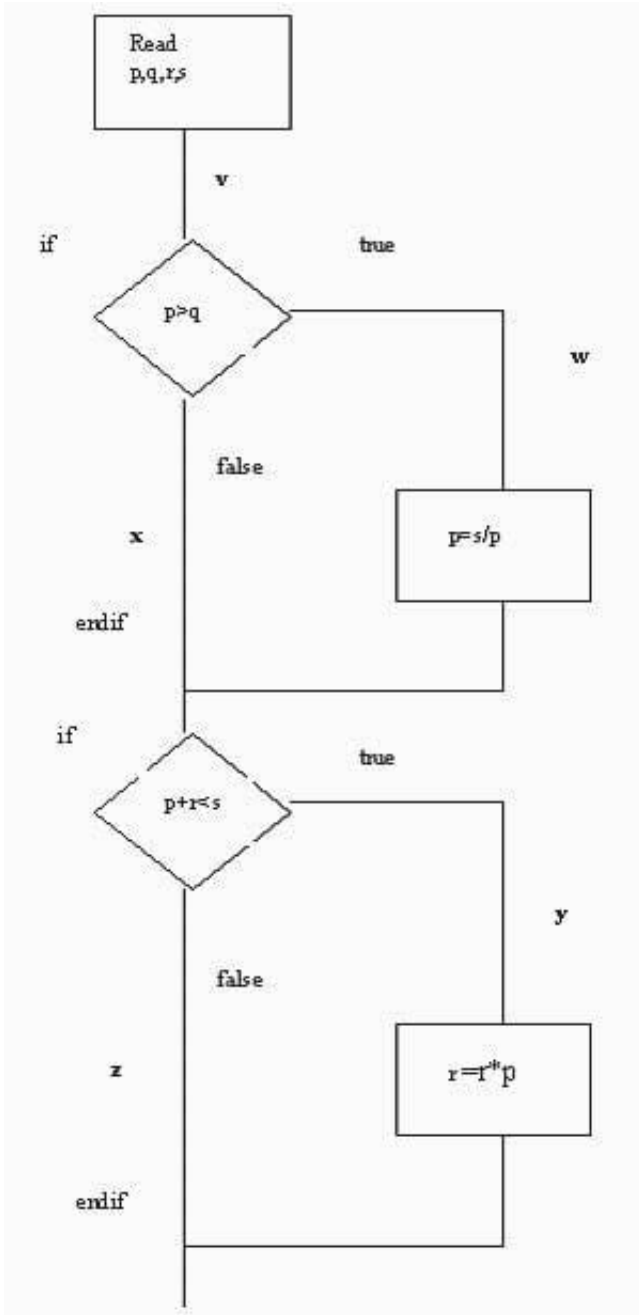
Which of the following is MOST characteristic of specification based (black-box) techniques?

- A. Test cases can be easily automated.
- B. Test cases are independent of each other.
- C. Test cases are derived systematically from models of the system .
- D. Test cases are derived systematically from the delivered code.

Correct Answer: C

QUESTION 4

The above diagram represents the following paths through the code.



- A. vwy
- B. vwz
- C. vxy
- D. vxz

What is the MINIMUM combination of paths required to provide full statement coverage?

- A. A
- B. ABD
- C. ABCD

D. ACD

Correct Answer: A

QUESTION 5

What is the purpose of exit criteria?

- A. To define when a test level is complete.
- B. To determine when a test has completed.
- C. To identify when a software system should be retired.
- D. To determine whether a test has passed.

Correct Answer: A

[Latest BH0-004 Dumps](#)

[BH0-004 Study Guide](#)

[BH0-004 Braindumps](#)