

# E20-591<sup>Q&As</sup>

Backup and Recovery Solutions Exam for Technology Architects

**Pass EMC E20-591 Exam with 100% Guarantee**

Free Download Real Questions & Answers **PDF** and **VCE** file from:

<https://www.pass2lead.com/e20-591.html>

100% Passing Guarantee  
100% Money Back Assurance

Following Questions and Answers are all new published by EMC  
Official Exam Center

- ⚙️ **Instant Download** After Purchase
- ⚙️ **100% Money Back** Guarantee
- ⚙️ **365 Days** Free Update
- ⚙️ **800,000+** Satisfied Customers



**QUESTION 1**

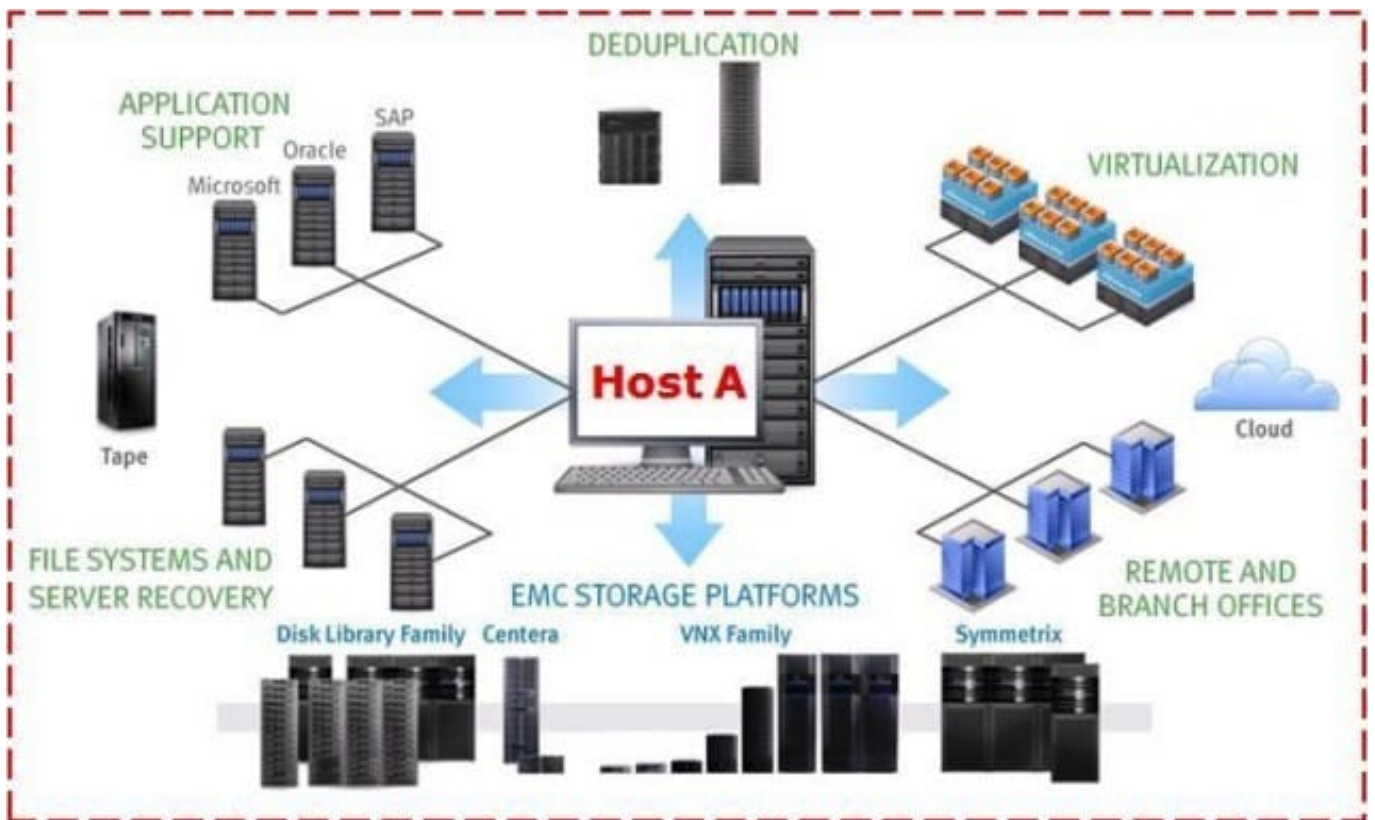
In an EMC NetWorker environment, a full backup is performed every Monday and an incremental backup the rest of the week. Which backup dataset is suitable for this backup schedule?

- A. Database log files
- B. Database control files
- C. Files with unchanged content and an unchanged timestamp
- D. Files with unchanged content with the timestamp updated daily

Correct Answer: C

**QUESTION 2**

Based on the backup environment represented in the exhibit,



which EMC product would you recommend be installed on Host A?

- A. NetWorker
- B. Avamar
- C. Data Domain

D. HomeBase

Correct Answer: A

---

**QUESTION 3**

An EMC Avamar administrator has an EMC Celerra volume with 25 million files backing up with a single Avamar NDMP Accelerator node. Based on EMC best practices, what is the minimum number of backup jobs needed to back up the entire volume?

A. 1

B. 2

C. 3

D. 5

Correct Answer: C

---

**QUESTION 4**

What is the key benefit to implementing Symantec's NetBackup OST with Data Domain systems?

A. Replication of data segments are inline

B. Media server is aware of all Data Domain systems

C. Data is ingested and replicated simultaneously

D. Data Domain system initiates and controls replication

Correct Answer: B

---

**QUESTION 5**

On an Avamar server using default settings, what is the maximum allowable operating system capacity utilization after which HFS check will not run?

A. 65%

B. 85%

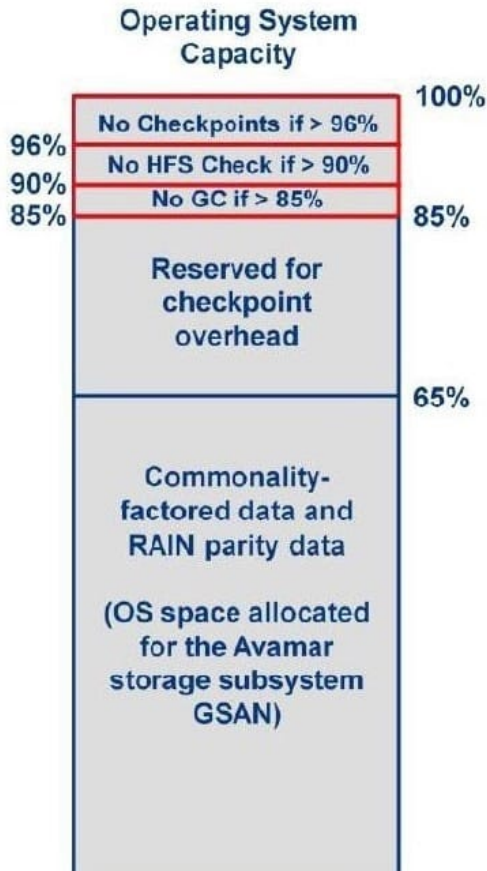
C. 90%

D. 95%

Correct Answer: C

---

## Avamar Server Capacity Thresholds (2 of 2)



Garbage collection does not run when OS capacity exceeds 85%  
– As checkpoints roll off, garbage collection will resume

`hfscheck` will not run when OS capacity exceeds 90%

Checkpoint does not run when OS capacity exceeds 96%

[E20-591 VCE Dumps](#)

[E20-591 Practice Test](#)

[E20-591 Exam Questions](#)