

E20-593^{Q&As}

Backup and Recovery Implementation Exam

Pass EMC E20-593 Exam with 100% Guarantee

Free Download Real Questions & Answers **PDF** and **VCE** file from:

<https://www.pass2lead.com/e20-593.html>

100% Passing Guarantee
100% Money Back Assurance

Following Questions and Answers are all new published by EMC
Official Exam Center

- ⚙️ **Instant Download** After Purchase
- ⚙️ **100% Money Back** Guarantee
- ⚙️ **365 Days** Free Update
- ⚙️ **800,000+** Satisfied Customers



QUESTION 1

A customer's EMC NetWorker environment has a Solaris client that had been backing up without failing for several weeks. The client has the following local mount points:

/usr /home /var

And two nfs mount points: /mars/data1 /jupiter/data1

The save set was identified as "ALL" in the client resource. The client had crashed and was successfully rebooted the previous day. The first request for a restore for this client was submitted for the last night's backup of /mars/data1/Monthly.doc and /jupiter/data1/Weekly.xls. The jupiter restore is successful but the mars data is not found and fails to be restored.

What is the most likely cause of this restore failure?

- A. /mars/data1 was not in the /etc/vfstab file and had not been backed up.
- B. The /nsr/res/servers file on mars is empty, prohibiting the restore.
- C. The nsrexecd was not running on mars, preventing the backup.
- D. The client save set was identified as ALL. ALL does not back up nfs mounts points.

Correct Answer: A

QUESTION 2

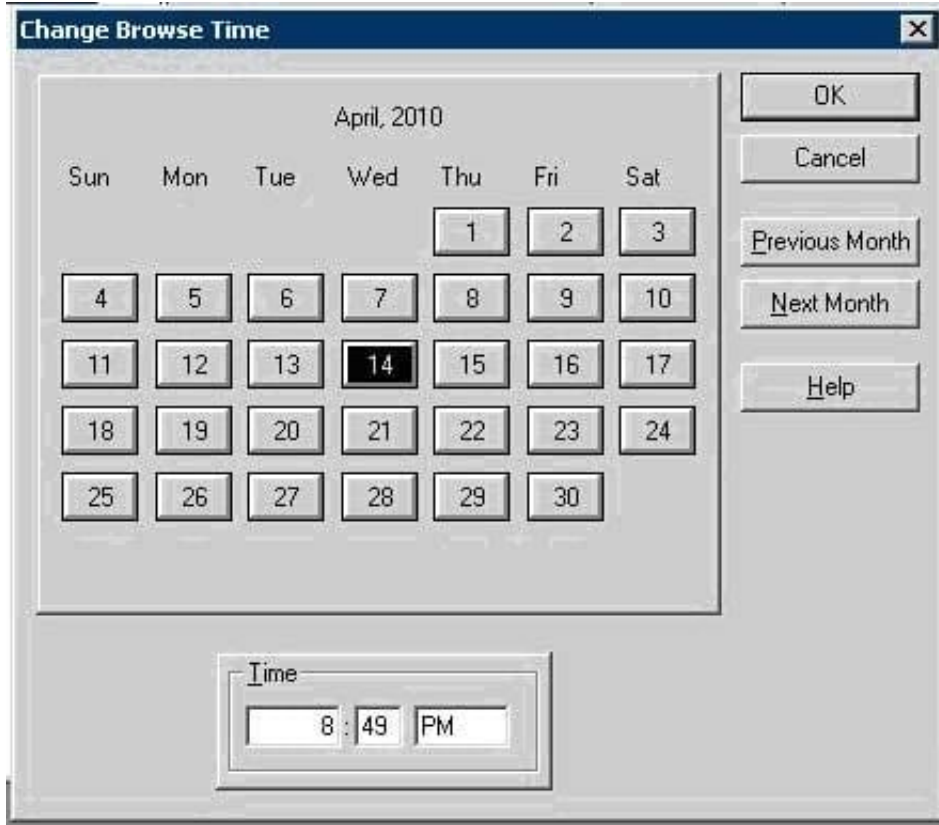
In an EMC NetWorker environment, you are required to keep media in drives for only 10 minutes after completion of backup. What parameter must be set?

- A. Operation timeout
- B. Unload sleep
- C. Idle device timeout
- D. Withdraw timeout

Correct Answer: C

QUESTION 3

Refer to the exhibit.



What is the purpose of the Change Browse Time window when performing a recover in EMC NetWorker User?

- A. View the Client File Index as it was at a specific point in time
- B. Display all recoveries from that client
- C. Determine the time and date for the volume used for the backup
- D. Show the time of the last recovery

Correct Answer: A

QUESTION 4

What is the command to start all of the EMC NetWorker processes on a UNIX server?

- A. networker start
- B. ./networker
- C. networker-start
- D. /proc/networker

Correct Answer: A

QUESTION 5

When the EMC NetWorker management console server and the EMC NetWorker server are installed on different hosts, what is required to administer EMC NetWorker server from the EMC NetWorker management console server?

- A. Provide users on the EMC NetWorker management console server the administrative privileges
- B. Provide users on the EMC NetWorker server the administrative privileges
- C. Provide users on the EMC NetWorker management console server the console user privileges
- D. Provide users on the EMC NetWorker server the console user privileges

Correct Answer: A

[Latest E20-593 Dumps](#)

[E20-593 VCE Dumps](#)

[E20-593 Practice Test](#)