

JN0-692^{Q&As}

Service Provider Routing and Switching Support, Professional

Pass Juniper JN0-692 Exam with 100% Guarantee

Free Download Real Questions & Answers **PDF** and **VCE** file from:

<https://www.pass2lead.com/jn0-692.html>

100% Passing Guarantee
100% Money Back Assurance

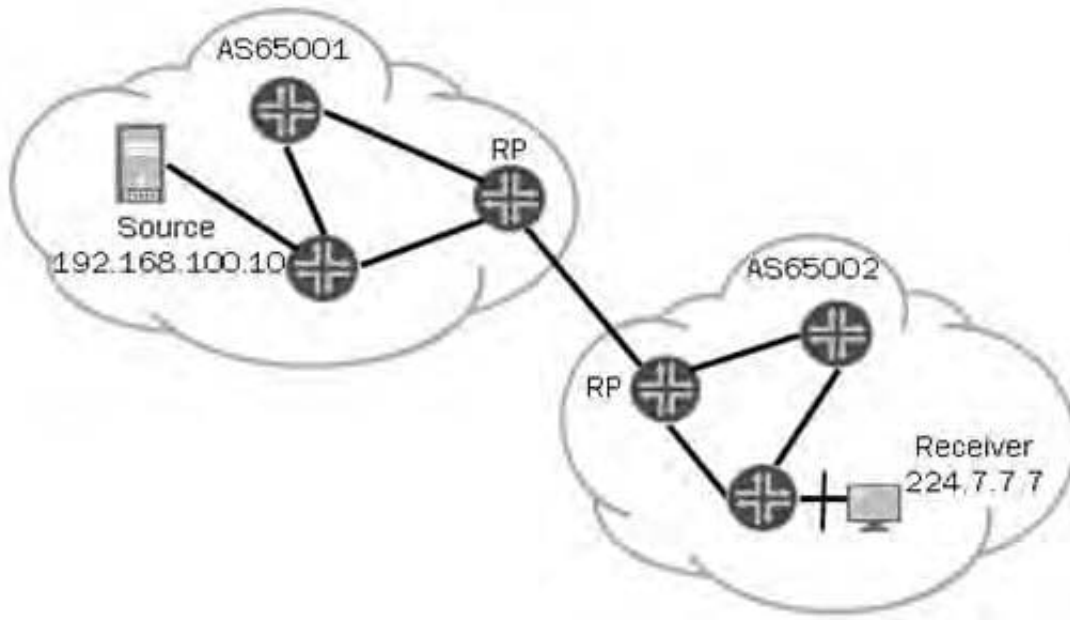
Following Questions and Answers are all new published by Juniper
Official Exam Center

- ⚙️ **Instant Download** After Purchase
- ⚙️ **100% Money Back** Guarantee
- ⚙️ **365 Days** Free Update
- ⚙️ **800,000+** Satisfied Customers



QUESTION 1

Click the Exhibit button Given the topology in the exhibit, which two requirements must be met to allow multicast traffic to flow from AS65001 to AS65002? (Choose two.)



- A. MSDP sessions must exist between all routers in AS65001.
- B. Source information must be relayed from AS65001 to AS65002.
- C. A full mesh of MBGP peering sessions must be formed within AS65001.
- D. A TCP session must be formed between the RPs in AS65001 and AS65002.

Correct Answer: BD

QUESTION 2

Click the Exhibit button.

```
user@PE2> show l2circuit connections
Layer-2 Circuit Connections:
```

```
Legend for connection status (St)
```

```
EI -- encapsulation invalid      NP -- interface h/w not present
MM -- mtu mismatch              Dn -- down
EM -- encapsulation mismatch    VC-Dn -- Virtual circuit Down
CM -- control-word mismatch     Up -- operational
VM -- vlan id mismatch         CF -- Call admission control failure
OL -- no outgoing label        IB -- TDM incompatible bitrate
NC -- intf encaps not CCC/TCC  TM -- TDM misconfiguration
BK -- Backup Connection        ST -- Standby Connection
CB -- rcvd cell-bundle size bad SP -- Static Pseudowire
LD -- local site signaled down  RS -- remote site standby
RD -- remote site signaled down XX -- unknown
```

```
Legend for interface status
```

```
Up -- operational
Dn -- down
```

```
Neighbor: 192.168.7.1
```

Interface	Type	St	Time last up	# Up trans
ge-1/0/0.600(vc 5)	rtt	EM		

```
user@PE1> show ldp database session 192.168.7.1
Input label database, 192.168.5.1:0--192.168.7.1:0
```

Label	Prefix
299792	192.168.5.1/32
299776	192.168.6.1/32
3	192.168.7.1/32
299824	L2CKT CtrlWord ETHERNET VC 5

```
Output label database, 192.168.5.1:0--192.168.7.1:0
```

Label	Prefix
3	192.168.5.1/32
299776	192.168.6.1/32
299792	192.168.7.1/32
299808	L2CKT CtrlWord VLAN VC 5

Customer A is complaining that CE1 and CE2 cannot form an OSPF adjacency across your LDP Layer 2 circuit. The physical topology of the network is CE1-PE1-P-PE2-CE2. PE1's loopback is 192.168.5.1, P's loopback is 192.168.6.1, and PE2's loopback is 192.168.7.1.

Referring to the output in the exhibit, what is the problem?

- A. mismatched virtual circuit ID values
- B. mismatched interface encapsulations
- C. incorrect PE-CE interface configuration
- D. extended LDP neighbor not established

Correct Answer: B

QUESTION 3

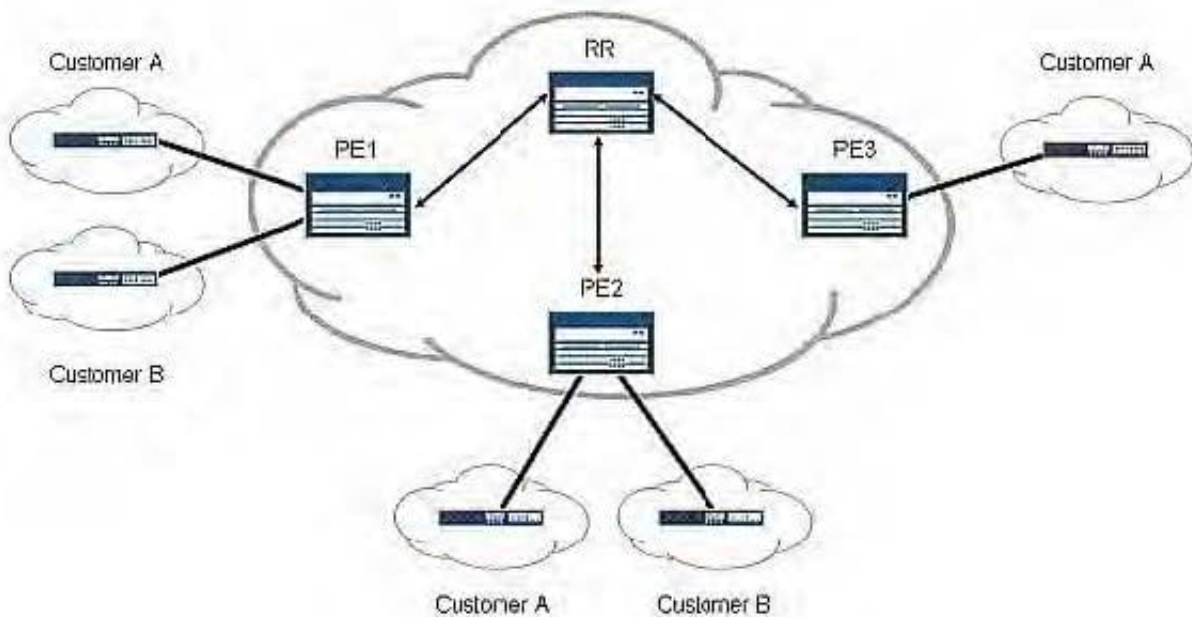
What does an operation (op) script do?

- A. Instructs the Junos OS to perform a set of actions whenever the script is run manually or called by another script
- B. Instructs the Junos OS to perform a set of actions based on its location in the configuration.
- C. Instructs the Junos OS to perform a set of actions during the process of activating configuration changes.
- D. Instructs the Junos OS to perform a set of actions automatically based on operational status of the device.

Correct Answer: A

QUESTION 4

Click the Exhibit button.



Referring to the exhibit, you want to save CPU processing load on the PE3 router by preventing the reception of routes belonging to Customer B. Which Layer 3 VPN scaling mechanism provides this functionality?

- A. route origin
- B. route refresh
- C. route reflection
- D. route target filtering

Correct Answer: D

QUESTION 5

Click the Exhibit button.

```
user@router# run show class-of-service rewrite-rule name traffic-class
Rewrite rule: traffic-class, Code point type: exp, Index: 58855
  Forwarding class      Loss priority  Code point
  best-effort           low           000
  best-effort           high          001
  expedited-forwarding low           111
  expedited-forwarding high          011
  assured-forwarding   low           100
  assured-forwarding   high          101
  network-control       low           110
  network-control       high          111
```

Your router should be configured with a rewrite rule which alters the default behavior of expedited-forwarding as shown in the exhibit. Which configuration is correct?

- A. Option A
- B. Option B
- C. Option C
- D. Option D

Correct Answer: A