

# TB0-123<sup>Q&As</sup>

TIBCO ActiveMatrix BusinessWorks 5 Certification Exam

## Pass Tibco TB0-123 Exam with 100% Guarantee

Free Download Real Questions & Answers **PDF** and **VCE** file from:

<https://www.pass2lead.com/tb0-123.html>

100% Passing Guarantee  
100% Money Back Assurance

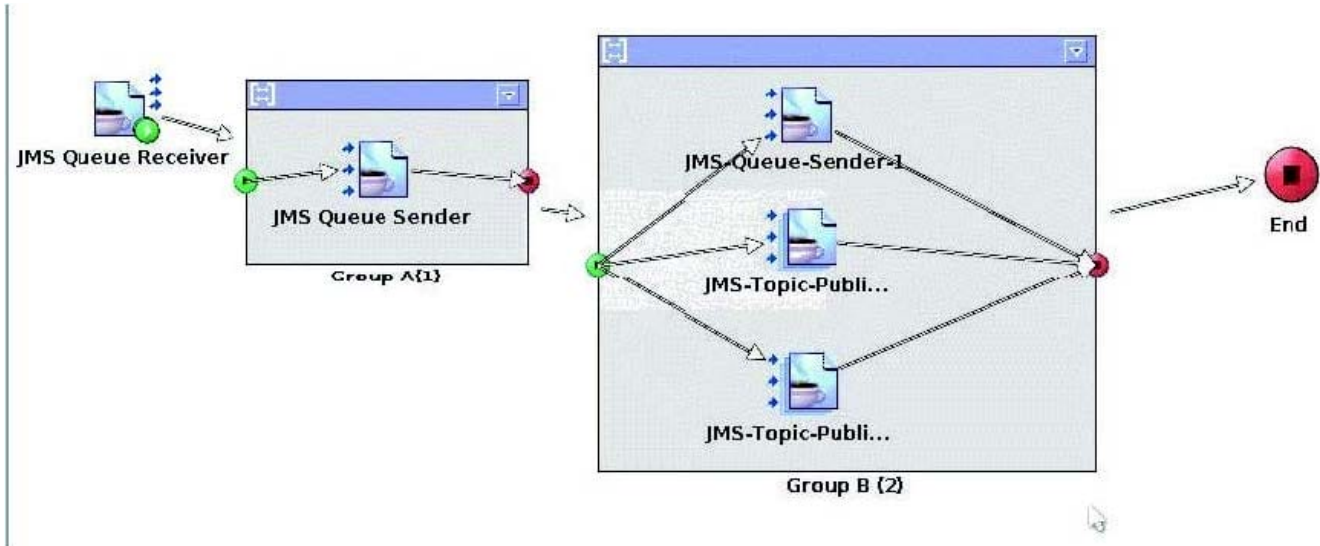
Following Questions and Answers are all new published by Tibco  
Official Exam Center

- ⚙️ **Instant Download** After Purchase
- ⚙️ **100% Money Back** Guarantee
- ⚙️ **365 Days** Free Update
- ⚙️ **800,000+** Satisfied Customers



**QUESTION 1**

Click the Exhibit button.



This process uses JMS Local transaction. The JMS Topic Publishers all point to JMS Shared Connection1. The JMS Queue Senders all point to JMS Shared Connection2. The JMS Queue Receiver is configured to tie into Group A(1).

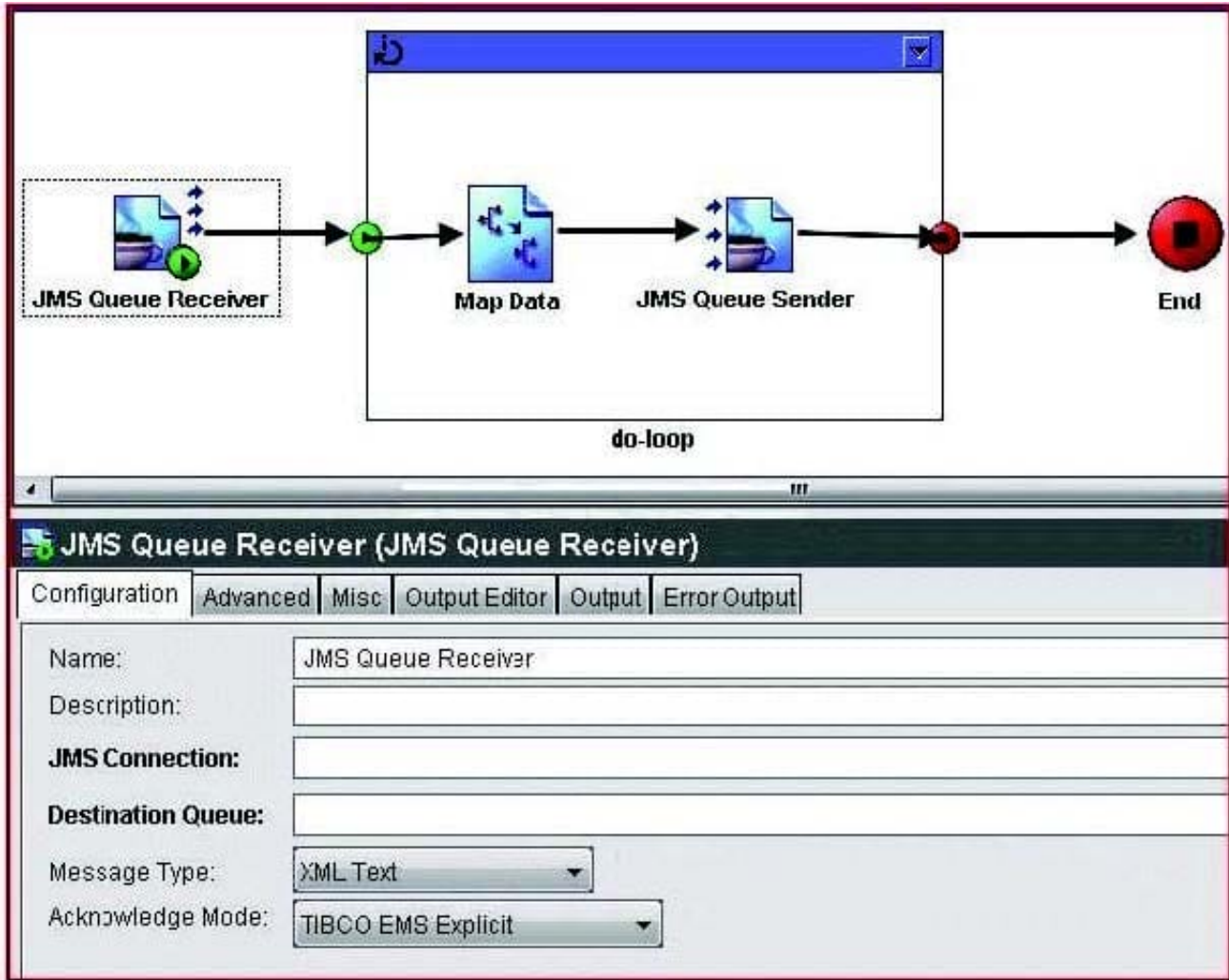
How many transactions are committed if the process executes successfully?

- A. 1
- B. 2
- C. 3
- D. 4
- E. 5

Correct Answer: C

**QUESTION 2**

Click the Exhibit button.



Which statement is true about the process shown?

- A. The map activity will be called as many times as the number of records being iterated.
- B. The map activity will be called only once because the group is a critical section guarding access to the messaging bus.
- C. The confirm activity is missing, so the process will not start.
- D. The message is never confirmed and is therefore redelivered continuously.

Correct Answer: D

### QUESTION 3

The Retrieve Resources activity can retrieve which resources?

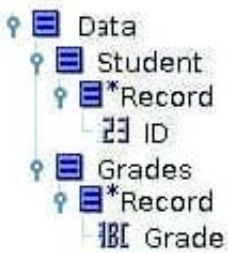
- A. XSD, XSLT and XML

- B. WSDL, WSIL, and XSD
- C. JAR, XSD and WSDL
- D. WSDL, WSIL and ZIP

Correct Answer: B

**QUESTION 4**

Click the Exhibit button.



**Schema A**



**Schema B**

If every Schema A record is sequential and every Student has a Grade element, what is the most appropriate way to map data from Schema A to B?

- A. use the Attribute XSLT statement
- B. use the For-Each XSLT statement
- C. use the Copy-Of XSLT statement
- D. use the Choose XSLT statement

Correct Answer: B

**QUESTION 5**

When using the Tester, which file is used to set custom engine properties (excluding Java properties)?

- A. the bwengine.xml file
- B. the designer.tra file
- C. a user created file
- D. the bwengine.tra file

Correct Answer: A

[Latest TB0-123 Dumps](#)

[TB0-123 PDF Dumps](#)

[TB0-123 Practice Test](#)