

# AZ-120<sup>Q&As</sup>

Planning and Administering Microsoft Azure for SAP Workloads

## Pass Microsoft AZ-120 Exam with 100% Guarantee

Free Download Real Questions & Answers **PDF** and **VCE** file from:

<https://www.pass2lead.com/az-120.html>

100% Passing Guarantee  
100% Money Back Assurance

Following Questions and Answers are all new published by Microsoft  
Official Exam Center

- ⚙️ **Instant Download** After Purchase
- ⚙️ **100% Money Back** Guarantee
- ⚙️ **365 Days** Free Update
- ⚙️ **800,000+** Satisfied Customers



**QUESTION 1**

You are deploying SAP Fiori to an SAP environment on Azure.

You are configuring SAML 2.0 for an SAP Fiori instance named FPP that uses client 100 to authenticate to an Azure Active Directory (Azure AD) tenant.

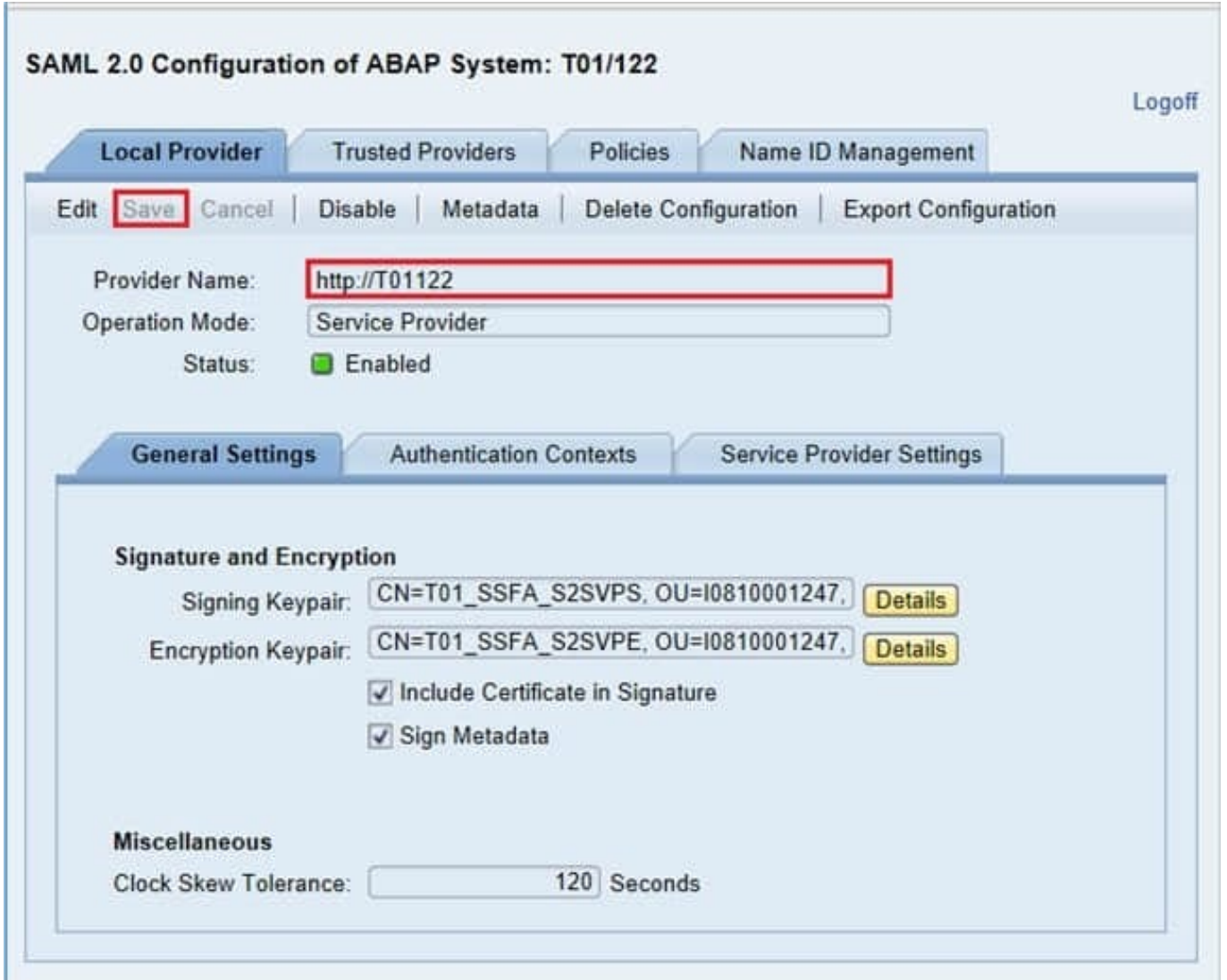
Which provider named should you use to ensure that the Azure AD tenant recognizes the SAP Fiori instance?

- A. `https://FPP`
- B. `ldap://FPP`
- C. `https://FPP100`
- D. `ldap://FPP-100`

Correct Answer: C

By default, the provider name is in the format `https://`. Azure AD expects the name in the format `ldap://`. We recommend that you maintain the provider name as `https://` so you can configure multiple SAP Fiori ABAP engines in Azure AD.

Example: Reference: <https://docs.microsoft.com/en-us/azure/active-directory/saas-apps/sap-fiori-tutorial>



**QUESTION 2**

**HOTSPOT**

You are planning replication of the SAP HANA database for the disaster recovery environment in Azure.

For each of the following statements, select Yes if the statement is true. Otherwise, select No.

NOTE: Each correct selection is worth one point.

Hot Area:

### Answer Area

Statements	Yes	No
You must use synchronous replication.	<input type="radio"/>	<input type="radio"/>
You must use delta data shipping for operation mode.	<input type="radio"/>	<input type="radio"/>
You must configure an Azure Directory (Azure AD) application to manage the failover.	<input type="radio"/>	<input type="radio"/>

Correct Answer:

### Answer Area

Statements	Yes	No
You must use synchronous replication.	<input type="radio"/>	<input checked="" type="radio"/>
You must use delta data shipping for operation mode.	<input type="radio"/>	<input checked="" type="radio"/>
You must configure an Azure Directory (Azure AD) application to manage the failover.	<input checked="" type="radio"/>	<input type="radio"/>

Box 1: No

SAP HANA Replication consists of one primary node and at least one secondary node. Changes to the data on the primary node are replicated to the secondary node synchronously or asynchronously.

Box 2: No

Since SPS11 SAP HANA system replication can be run in two different operation modes:

delta\_datashipping

logreplay

Box 3: Yes

Reference:

<https://docs.microsoft.com/en-us/azure/virtual-machines/workloads/sap/sap-hana-high-availability-rhel>

<https://blogs.sap.com/2018/01/08/your-sap-on-azure-part-4-high-availability-for-sap-hana-using-system-replication/>

---

### QUESTION 3

Note: This question is part of a series of questions that present the same scenario. Each question in the series contains a unique solution that might meet the stated goals. Some question sets might have more than one correct solution, while

others might not have a correct solution.

After you answer a question in this section, you will NOT be able to return to it. As a result, these questions will not appear in the review screen.

You have an SAP production landscape on-premises and an SAP development landscape on Azure.

You deploy a network virtual appliance to act as a firewall between the Azure subnets and the on-premises network.

You need to ensure that all traffic is routed through the network virtual appliance.

Solution: You create an Azure Traffic Manager profile.

Does this meet the goal?

A. Yes

B. No

Correct Answer: B

---

### QUESTION 4

You plan to automate a deployment of SAP NetWeave on Azure virtual machines by using Azure Resource Manager templates. The database tier will consist of two instances of an Azure Marketplace Microsoft SQL Server 2017 virtual machine image that each has 8 TB of RAM.

Which task should you include in the templates used to deploy the SQL Server virtual machines?

A. Enable buffer pool extensions in SQL Server.

B. Enable read caching on the disks used to store the SQL Server database log files.

C. Run the SQL Server setup and specify the /ACTION=REBUILDDATABASE and /SQLCOLLATION switches.

D. Run the SQL Server setup and specify the /ACTION=INSTALL and /SQLMAXMEMORY switches.

Correct Answer: D

---

### QUESTION 5

DRAG DROP

You have an Azure subscription.

You plan to deploy a SAP NetWeaver landscape that will use SQL Server on Azure virtual machines. The solution must meet the following requirements:

1.

The SAP application and database tiers must reside in the same Azure zone.

2.

The application tier in the Azure virtual machines must belong to the same Availability Set.

Which four actions should you perform in sequence? To answer, move the appropriate actions from the list of actions to the answer area and arrange them in the correct order.

NOTE: More than one order of answer choices is correct. You will receive credit for any of the correct orders you select.

Select and Place:

**Actions**

**Answer Area**

Create a host group

Create a proximity placement group

Create an Availability Set

Deploy the application tier in the Azure virtual machines

Deploy SQL Server on Azure virtual machines

Correct Answer:

**Actions**

Create a host group

**Answer Area**

Create a proximity placement group
Create an Availability Set
Deploy SQL Server on Azure virtual machines
Deploy the application tier in the Azure virtual machines

Step 1: Create a proximity placement group

A proximity placement group is a logical grouping of Azure resources within the same Azure data center in order to reduce latency.

Step 2: Create an Availability Set

Create an availability set that references the Azure proximity group.

By adding the availability sets to proximity placement groups, the network latencies are considerably reduced, thereby improving the overall performance.

Step 3: Deploy SQL Server on Azure Virtual machines

Step 4: Deploy the application tier in the Azure virtual machines

Deploy the application layer VMs by referencing the availability set and the proximity placement group.

Reference:

<https://docs.microsoft.com/en-us/azure/virtual-machines/workloads/sap/sap-proximity-placement-scenarios>

[AZ-120 Practice Test](#)

[AZ-120 Exam Questions](#)

[AZ-120 Braindumps](#)