

C2090-560^{Q&As}

PureData System for Analytics v7.1

Pass IBM C2090-560 Exam with 100% Guarantee

Free Download Real Questions & Answers **PDF** and **VCE** file from:

<https://www.pass2lead.com/c2090-560.html>

100% Passing Guarantee
100% Money Back Assurance

Following Questions and Answers are all new published by IBM Official Exam Center

- ⚙️ **Instant Download** After Purchase
- ⚙️ **100% Money Back** Guarantee
- ⚙️ **365 Days** Free Update
- ⚙️ **800,000+** Satisfied Customers



QUESTION 1

Why would an IBM Tivoli Endpoint Manager (TEM) administrator use the task relay setting Name Override?

- A. to provide an alternate domain name for the agent connections to a relay
- B. to have the relay report a different name to the server to avoid name collision with another relay
- C. to have the relay display a different name in the TEM Console than its default name so it can be grouped with other relays
- D. to have the relay use a different domain name so it can be part of a Managed Service Point segmented customer environment

Correct Answer: A

QUESTION 2

Asset Discovery scans must be implemented within a customer's IBM Tivoli Endpoint Manager V8.1 deployment. Which warnings should the customer be aware of as part of the documentation for Policies and Procedures?

- A. Inform any Security or Network Operations Center that the Asset Discovery scans use Nmap and may trigger Intrusion Detection Devices. Reduce scans to Class C networks to increase the speed of the actual scans. Nmap scans are completely safe and should never impact devices on the network.
- B. Inform any Security or Network Operations Center that the Asset Discovery scans use Nmap and may trigger Intrusion Detection Devices. Always perform scans across the entire network to increase the speed of the actual scans. Nmap scans are completely safe and should never impact devices on the network.
- C. Inform the Security or Network Operations Center that the Asset Discovery scans use Nmap and may trigger Intrusion Detection Devices. Reduce scans to Class C networks to increase the speed of the actual scans. Network scans may cause certain legacy network devices, such as old network printer devices, to fail if scanned.
- D. Using a low frequency scan such as Paranoid will not trigger Intrusion Detection Devices so there is no need to inform the Security or Network Operations Center or the scans. Reduce scans to Class C networks to increase the speed of the actual scans. Network scans may cause certain legacy network devices, such as old network printer devices, to fail if scanned.

Correct Answer: C

QUESTION 3

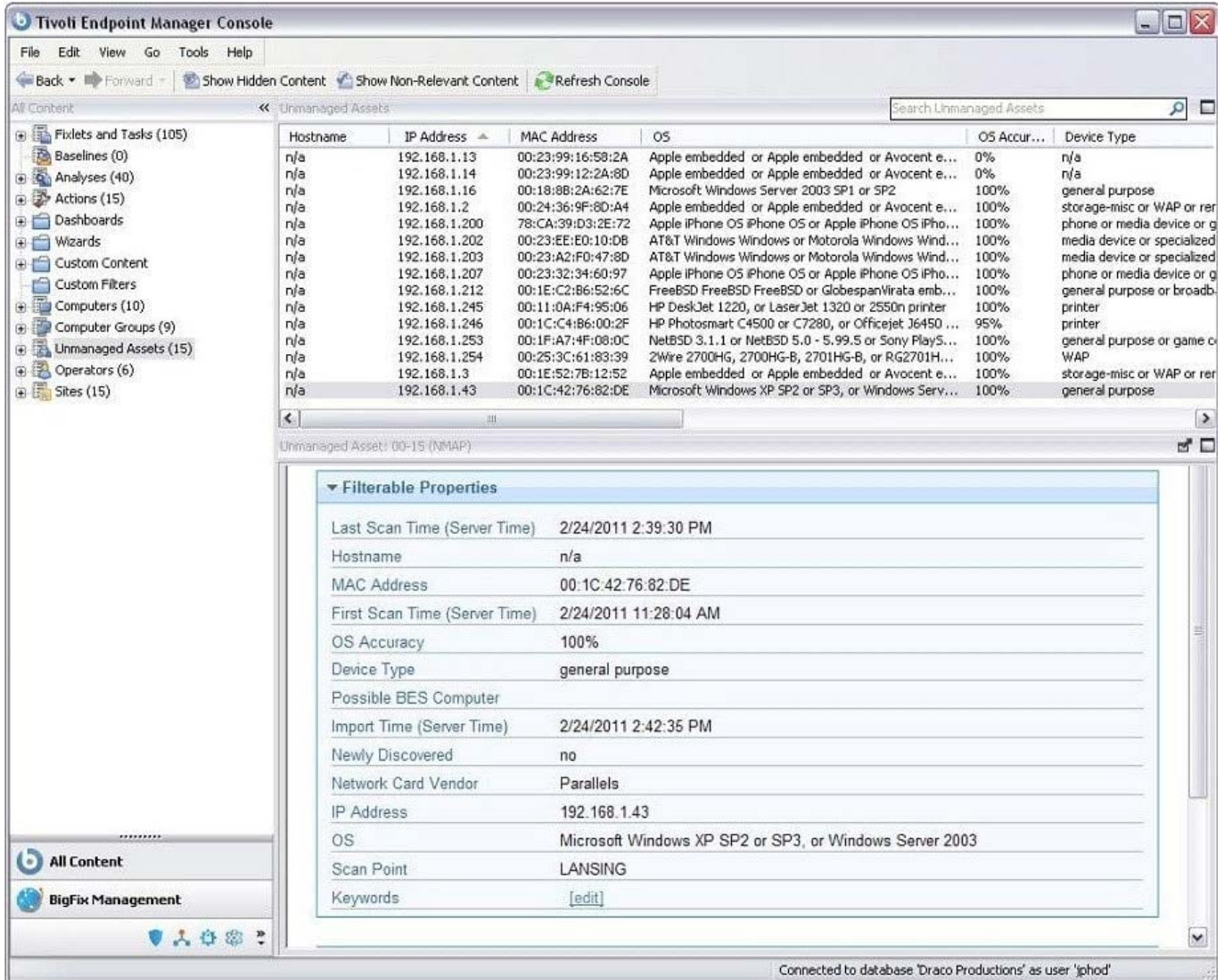
Why would an agent not appear on the IBM Tivoli Endpoint Manager (TEM) Console after a new deployment?

- A. UDP on the agent system is blocked.
- B. The agent masthead is incorrect or missing.
- C. The TEM Console is running on the TEM Server.
- D. The agent system was not rebooted after install.

Correct Answer: B

QUESTION 4

Click the Exhibit button.



A customer is implementing Asset Discovery within their IBM Tivoli Endpoint Manager V8.1 (TEM) environment. They have previously run a scan and based on the exhibit, what can be concluded about the system using IP Address 192.168.1.43?

- A. This system has a TEM Agent installed.
- B. The system's TEM Agent may not be functional.
- C. This system does not have a TEM Agent installed.
- D. It is not possible to determine if the TEM Agent is installed or not.

Correct Answer: C

QUESTION 5

Which two vendors are supported by IBM Tivoli Endpoint Manager Client Manager for Endpoint Protection? (Choose two.)

- A. HP
- B. Sophos
- C. Symantec
- D. Kaspersky
- E. BMC Software

Correct Answer: BC

[C2090-560 PDF Dumps](#)

[C2090-560 VCE Dumps](#)

[C2090-560 Study Guide](#)