

DES-5121^{Q&As}

Specialist - Implementation Engineer - Campus Networking Exam

Pass EMC DES-5121 Exam with 100% Guarantee

Free Download Real Questions & Answers **PDF** and **VCE** file from:

<https://www.pass2lead.com/des-5121.html>

100% Passing Guarantee
100% Money Back Assurance

Following Questions and Answers are all new published by EMC
Official Exam Center

- ⚙️ **Instant Download** After Purchase
- ⚙️ **100% Money Back** Guarantee
- ⚙️ **365 Days** Free Update
- ⚙️ **800,000+** Satisfied Customers



QUESTION 1

In a traditional campus network design using a three-tier hierarchical model, what are the key attributes of the Core layer in this model?

- A. Provides a wide range of services, is highly available, and operates in an active-passive mode
- B. Provides a limited set of services, is highly available, and operates in an always-on mode
- C. Provides a wide range of services, is highly available, and operates in an always-on mode
- D. Provides a limited set of services, is highly available, and operates in an active-passive mode

Correct Answer: B

QUESTION 2

Which commands should a network administrator use to configure a RADIUS server on a Dell EMC N-Series switch?

- A. Switch-1(config)# radius 10.1.1.111 Switch-1(config-radius)# name RADIUS-Server Switch-1(config-radius)# key secretkey
- B. Switch-1(config)# radius server auth 10.1.1.111 Switch-1(config-radius)# name RADIUS-Server Switch-1(config-radius)# key "secretkey"
- C. Switch-1(config)# radius auth 10.1.1.111 Switch-1(config-radius)# name "RADIUS-Server" Switch-1(config-radius)# key "secretKey"
- D. Switch-1(config)# radius auth server 10.1.1.111 Switch-1(config-radius)# name RADIUS-Server Switch-1(config-radius)# key "secretKey"

Correct Answer: B

QUESTION 3

Which function does a VRRP backup router perform?

- A. Sends keepalive advertisements to the other backup routers
- B. Processes and responds to ARP requests
- C. Forwards packets to the Master with a destination IP of the virtual IP address
- D. Receives packets with the virtual MAC address as the destination for other backup routers

Correct Answer: D

QUESTION 4

Refer to the Exhibit.

```
Switch-1(config)# radius server host 10.1.1.111 Switch-1(config-radius)# key "secretkey" Switch-1(config-radius)# exit
Switch-1(config)# aaa authentication login "LOCAL-AUTH" local Switch-1(config)# aaa authentication login "REMOTE-
AUTH" radius local Switch-1(config)# aaa authentication enable "REMOTE-AUTH" radius enable Switch-1(config)# aaa
authentication login default tacacs local Switch-1(config)# aaa authentication enable default tacacs enable
Switch-1(config)# line telnet Switch-1(config-telnet)# login authentication "REMOTE-AUTH" Switch-1(config-telnet)# exit
Switch-1(config)# line ssh Switch-1(config-ssh)# login authentication default Switch-1(config)# exit Switch-1(config)# line
console Switch-1(config-line)# login authentication "LOCAL-AUTH" Switch-1(config-line)# exit
```

Which authentication method will be used if a user tries to log into the switch when accessing through SSH?

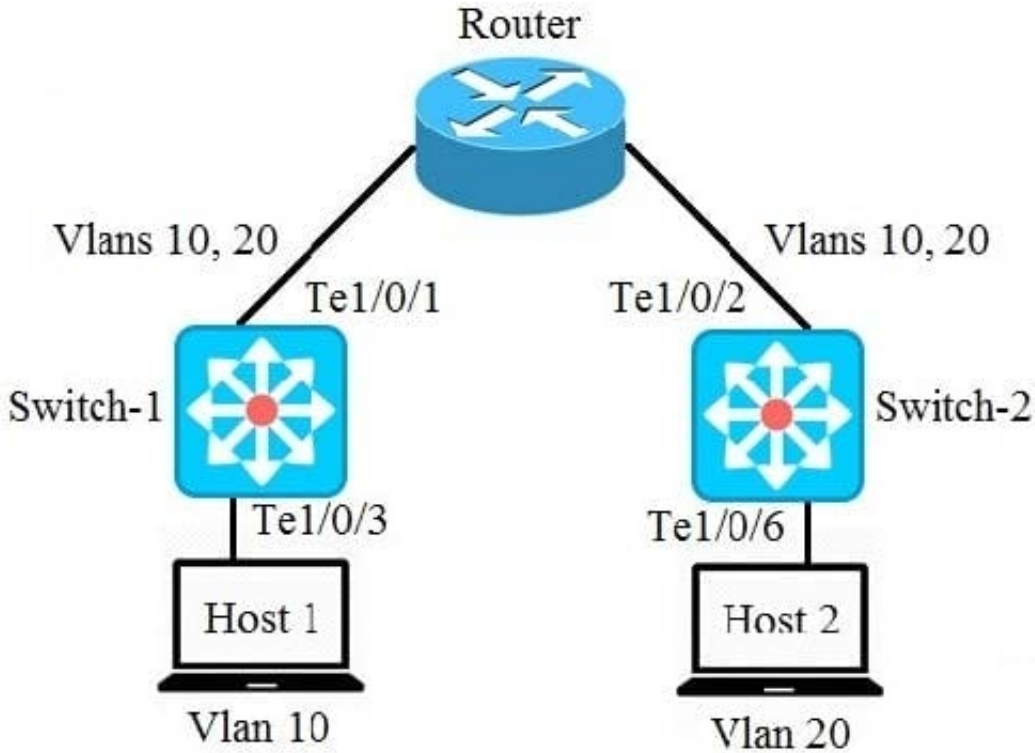
- A. RADIUS, then fails over to a local user account
- B. Local user account
- C. TACACS, then fails over to a local user account
- D. None

Correct Answer: C

QUESTION 5

```
Switch-1(config)# interface tengigabitethernet 1/0/1 Switch-1(config)# switchport mode access Switch-1(config)#
switchport trunk allowed vlan 10, 20 Switch-1(config)# Switch-1(config)# interface tengigabitethernet 1/0/3
Switch-1(config)# switchport mode access Switch-1(config)# switchport access vlan 10
```

```
Switch-2(config)# interface tengigabitethernet 1/0/2 Switch-2(config)# switchport mode trunk Switch-2(config)#
switchport trunk allowed vlan 10, 20 Switch-2(config)# Switch-2(config)# interface tengigabitethernet 1/0/6
Switch-2(config)# switchport mode access Switch-2(config)# switchport access vlan 20
```



A network administrator is troubleshooting why Host 1 cannot communicate with Host 2.

Based on the switch output shown in the exhibit, what is the reason for the communication issue?

- A. Port Te1/0/1 on Switch-1 is configured incorrectly
- B. Port Te1/0/2 on Switch-2 is configured incorrectly
- C. Port Te1/0/3 for Host 1 is configured incorrectly on Switch-1
- D. Port Te1/0/6 for Host 2 is configured incorrectly on Switch-2

Correct Answer: A

[Latest DES-5121 Dumps](#)

[DES-5121 VCE Dumps](#)

[DES-5121 Study Guide](#)