

# HPE6-A48<sup>Q&As</sup>

Aruba Certified Mobility Expert 8 Written Exam

**Pass HP HPE6-A48 Exam with 100% Guarantee**

Free Download Real Questions & Answers **PDF** and **VCE** file from:

<https://www.pass2lead.com/hpe6-a48.html>

100% Passing Guarantee  
100% Money Back Assurance

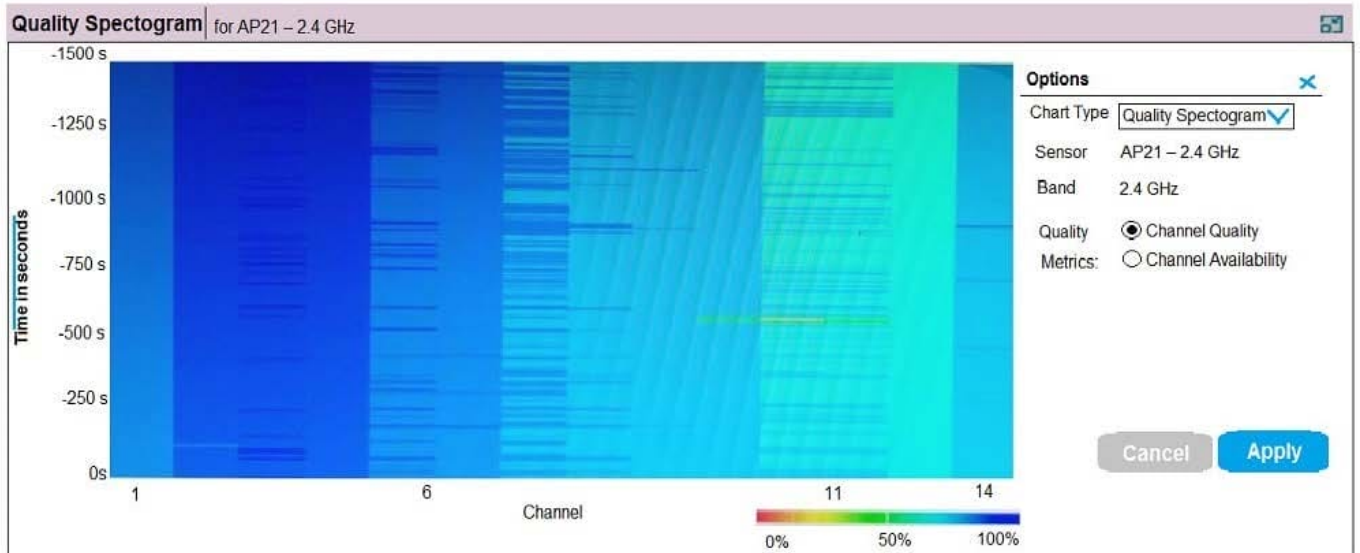
Following Questions and Answers are all new published by HP Official Exam Center

-  **Instant Download** After Purchase
-  **100% Money Back** Guarantee
-  **365 Days** Free Update
-  **800,000+** Satisfied Customers



**QUESTION 1**

Refer to the exhibit.



(A48.01114442)

Based on the output shown in the exhibit, which channel offers the highest quality?

- A. Channel 1
- B. Channel 6
- C. Channel 11
- D. Channel 14

Correct Answer: C

**QUESTION 2**

Refer to the exhibit.

**Access-1 (config) # show tunneled-node-server state**

**Local Master Server (LMS) State**

LMS Type	IP Address	State	Capability	Role
Primary	: 10.1.140.100	Complete	Per User	Operational Primary
Secondary	: 10.1.140.101	Complete	Per User	Operational Secondary

**Switch Anchor Controller (SAC) State**

	IP Address	Mac Address	State
SAC	: 10.1.140.100	204c03-06e5c0	Registered
Standby-SAC	: 10.1.140.101	204c03-06e790	Registered

**User Anchor Controller (UAC) : 10.1.140.100**

User	Port	VLAN	State	Bucket ID
005056-a5510b	20	143	Registered	255

**User Anchor Controller (UAC) : 10.1.140.101**

User	Port	VLAN	State	Bucket ID
------	------	------	-------	-----------

Based on the output shown in the exhibitm with which Aruba devices has Access-1 established tunnels?

- A. a pair of MCs within a cluster
- B. a single standalone MC
- C. a pair of MCs with APFF enabled
- D. a pair of switches

Correct Answer: B

**QUESTION 3**

A network administrator deplos a guest solution over WiFi and creates a corp\_guest role for this purpose. The network administrator must configure the solution with a custom policy that permits visitors to get an IP address, perform DNS resolutions, and get internet access while blocking any attempt to reach internal resources at the 10.0.0.0/8 network. The solution should prevent visitors from acting as rogue DHCP servers, then blacklist and log the attempt if this ever happens.

Which setup meets these requirements?

- A. netdestination corporate\_network network 10.0.0.0 255.0.0.0 ip access-list session corp\_guests user any udp 68 deny log blacklist any any svc-dhcp permit user alias coroporate\_network deny user any any permit user-role Corp\_guest access-list session corp\_guests
- B. netdestination corporate\_network network 10.0.0.0 255.0.0.0 ip access-list session corp\_guests any any udp 68 deny

log blacklist any any svc-dhcp permit user alias corporate\_network deny user any any permit user-role Corp\_guest  
access-list session corp\_guests

C. netdestination corporate\_network network 10.0.0.0 255.0.0.0 ip access-list session corp\_guests user any udp 67  
deny log blacklist any any svc-dhcp permit user alias corporate\_network deny user any any permit user-role  
Corp\_guest access-list session corp\_guests

D. netdestination corporate\_network network 10.0.0.0 255.0.0.0 ip access-list session corp\_guests any any udp 67 deny  
log blacklist any any svc-dhcp permit user alias corporate\_network deny user any any permit user-role Corp\_guest  
access-list session corp\_guests

Correct Answer: A

---

#### QUESTION 4

A network administrator wants to receive a major alarm every time a controller or an Aruba switch goes down for either a local or an upstream device failure. Which alarm definition must the network administrator create to accomplish this?

A.

**Trigger**

Type: Device Down ▾

Severity: Major ▾

Limit by number of down events:  Yes  No

Send Alerts for Thin APs when Controller is Down:  Yes  No

Send Alerts when Upstream Device is Down:  Yes  No

Send Alerts on Reboot:  
Include reboots detected by uptime reset or reboot count increase  Yes  No

**Conditions**

Matching conditions:  All  Any

**Add** New Trigger Condition

OPTION	CONDITION	VALUE	
Device Type ▾	is ▾	Controller ▾	🗑️
Device Type ▾	is ▾	Router/Switch ▾	🗑️

B.

**Trigger**

Type: Device Down ▾

Severity: Major ▾

Limit by number of down events:  Yes  No

Send Alerts for Thin APs when Controller is Down:  Yes  No

Send Alerts when Upstream Device is Down:  Yes  No

Send Alerts on Reboot:  
Include reboots detected by uptime reset or reboot count increase  Yes  No

**Conditions**

Matching conditions:  All  Any

**Add** New Trigger Condition

OPTION	CONDITION	VALUE	
Device Type ▾	is ▾	Controller ▾	🗑️
Device Type ▾	is ▾	Router/Switch ▾	🗑️

C. 

**Trigger**

Type:    
Severity:    
Limit by number of down events:  Yes  No  
Send Alerts for Thin APs when Controller is Down:  Yes  No  
Send Alerts when Upstream Device is Down:  Yes  No  
Send Alerts on Reboot:  Yes  No  
Include reboots detected by uptime reset or reboot count increase

**Conditions**

Matching conditions:  All  Any

New Trigger Condition

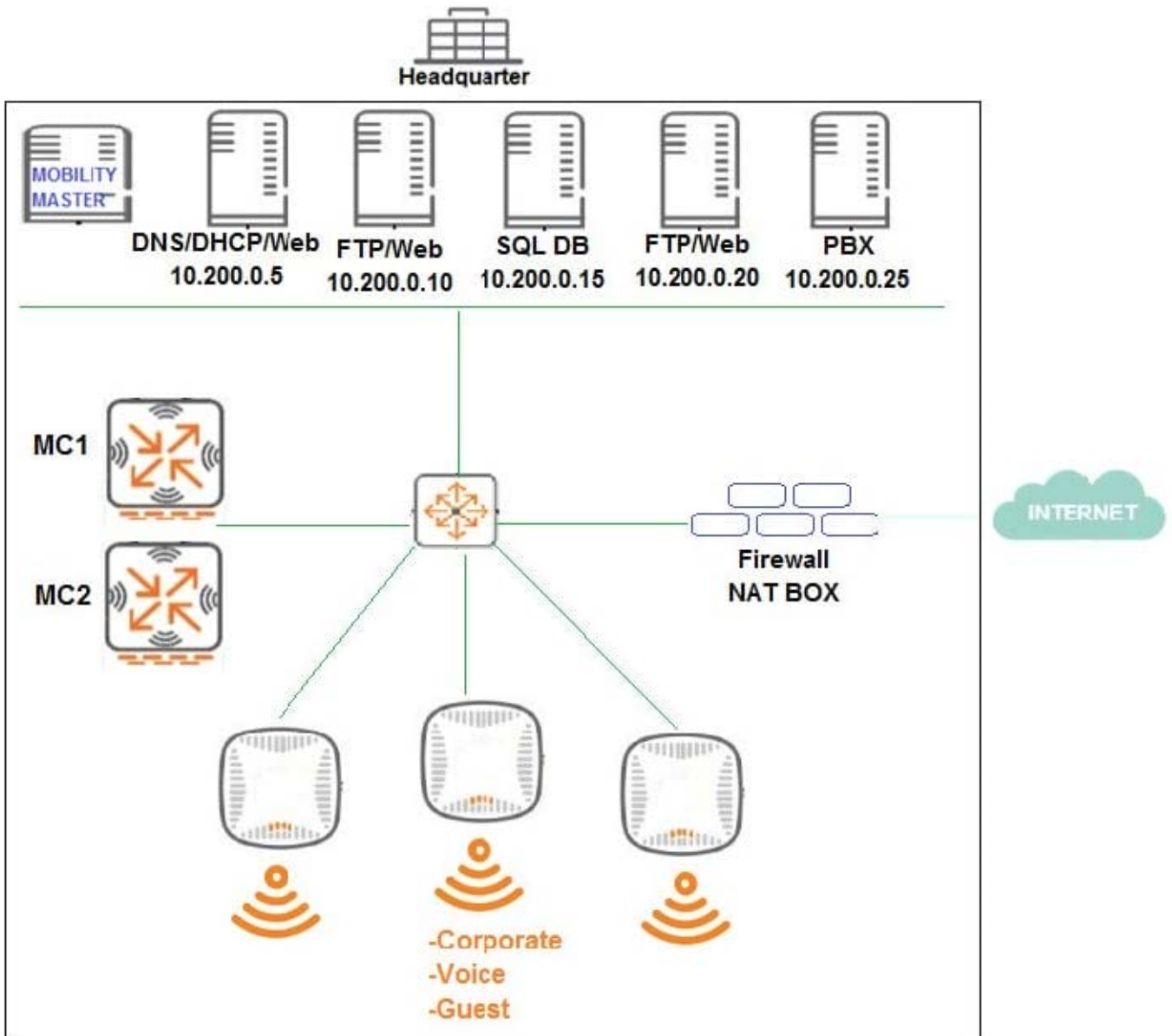
OPTION	CONDITION	VALUE
<input type="text" value="Device Type"/> <input type="button" value="v"/>	<input type="text" value="is"/> <input type="button" value="v"/>	<input type="text" value="Controller"/> <input type="button" value="v"/>
<input type="text" value="Device Type"/> <input type="button" value="v"/>	<input type="text" value="is"/> <input type="button" value="v"/>	<input type="text" value="Universal Network"/> <input type="button" value="v"/>

- A. Option A
- B. Option B
- C. Option C

Correct Answer: B

**QUESTION 5**

Refer to the exhibit.



An organization provides WiFi access through a corporate SSID with an Aruba Mobility Master (MM) Mobility Controller (MC) network that includes PEF functions. The organization wants to have a single firewall policy configured and applied to the employee role.

This policy must allow users to reach Web, FTP, and DNS services, as shown in the exhibit. Other services should be exclusive to other roles. The client NICs should receive IP settings dynamically.

Which policy design meets the organization's requirements while minimizing the number of policy rules?

A. `netdestination alias1 host 10.200.0.10 host 10.200.0.20 ip access-list session policy1 user host 10.200.0.5 svc-dns permit user host 10.200.0.5 svc-http permit`

`user alias alias1 svc-http permit user alias alias1 svc-ftp permit`

B. `netdestination alias1 host 10.200.0.5 host 10.200.0.10 host 10.200.0.20 netdestination alias2 host 10.200.0.10 host 10.200.0.20 ip access-list session policy1 any any svc-dhcp permit user host 10.200.0.5 svc-dns permit user alias alias1 svc-http permit user alias alias2 svc-ftp permit`

C. netdestination alias1 host 10.200.0.10 host 10.200.0.20 ip access-list session policy1 any any svc-dhcp permit user host 10.200.0.5 svc-dns permit user host 10.200.0.5 svc-http permit user alias alias1 svc-http permit user alias alias1 svc-ftp permit

D. netdestination alias1 host 10.200.0.5 host 10.200.0.10 host 10.200.0.20 netdestination alias2

Correct Answer: C

[Latest HPE6-A48 Dumps](#)

[HPE6-A48 Practice Test](#)

[HPE6-A48 Exam Questions](#)