

HPE6-A49^{Q&As}

Aruba Certified Design Expert 8 Written Exam

Pass HP HPE6-A49 Exam with 100% Guarantee

Free Download Real Questions & Answers **PDF** and **VCE** file from:

<https://www.pass2lead.com/hpe6-a49.html>

100% Passing Guarantee
100% Money Back Assurance

Following Questions and Answers are all new published by HP Official Exam Center

-  **Instant Download** After Purchase
-  **100% Money Back** Guarantee
-  **365 Days** Free Update
-  **800,000+** Satisfied Customers



QUESTION 1

Refer to the exhibits.

Exhibit 1. Existing wiring plan:

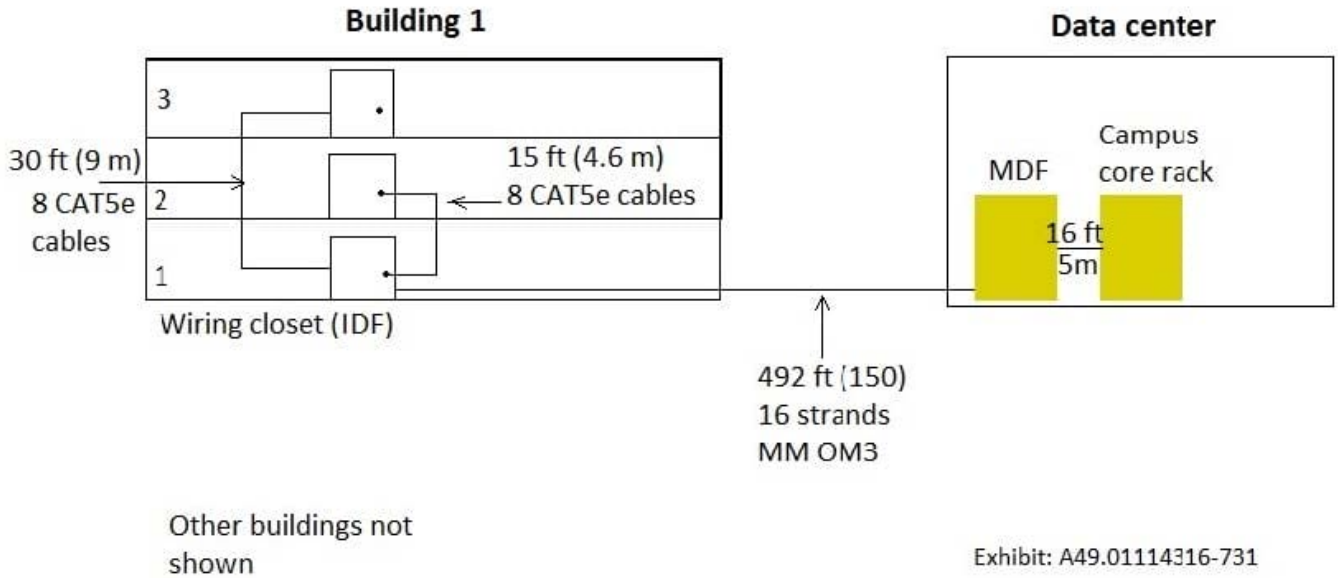


Exhibit 2. Current proposal:

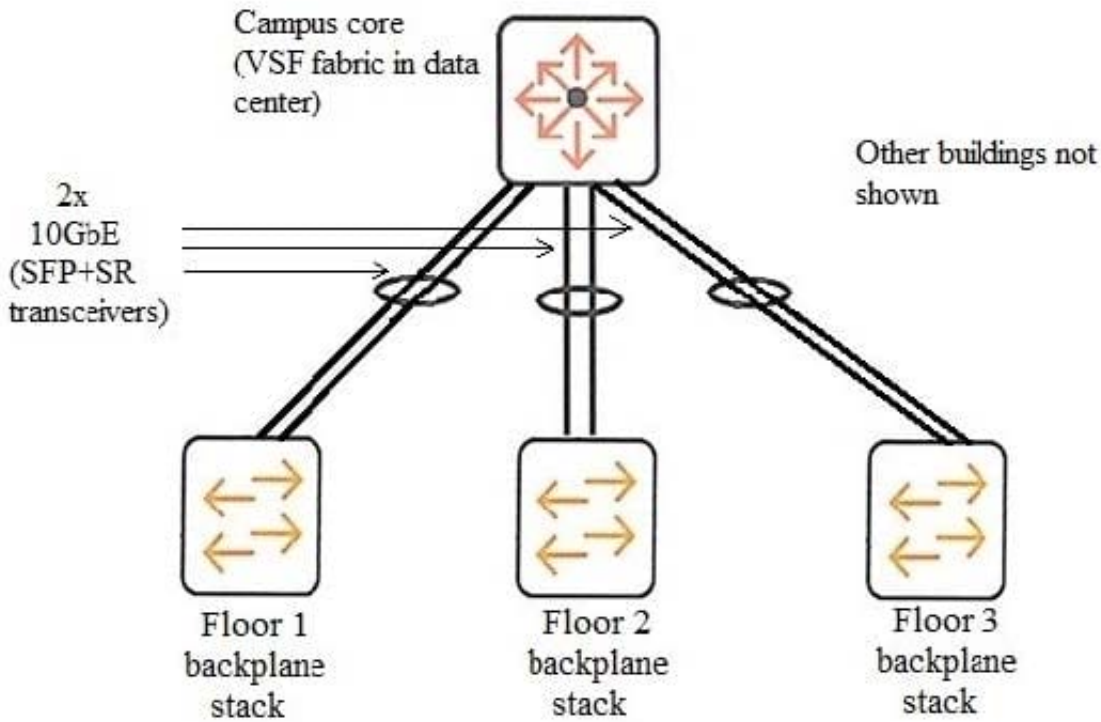


Exhibit: A49.01114316-732

A customer has a building that needs a switch upgrade. The customer would like at least 20Gbps for the uplink bandwidth out of each closet. The building writing plan is shown in Exhibit 1. The customer will not consider any cable upgrades at this point. The current proposal is shown in Exhibit 2.

Which correction must architect make to the proposal to meet the customer requirements?

- A. Change the SR transceivers for each link between the writing closet switches and the network core to LRM transceivers.
- B. Add an aggregation layer, and connect writing closet switches to the aggregation layer on Smart Rate ports.
- C. Add an aggregation layer, and connect writing closet switches to the aggregation layer with SFP+ SR transceivers.
- D. Add a mode conditioning cable for each link between the writing closet switches and the network core.

Correct Answer: D

QUESTION 2

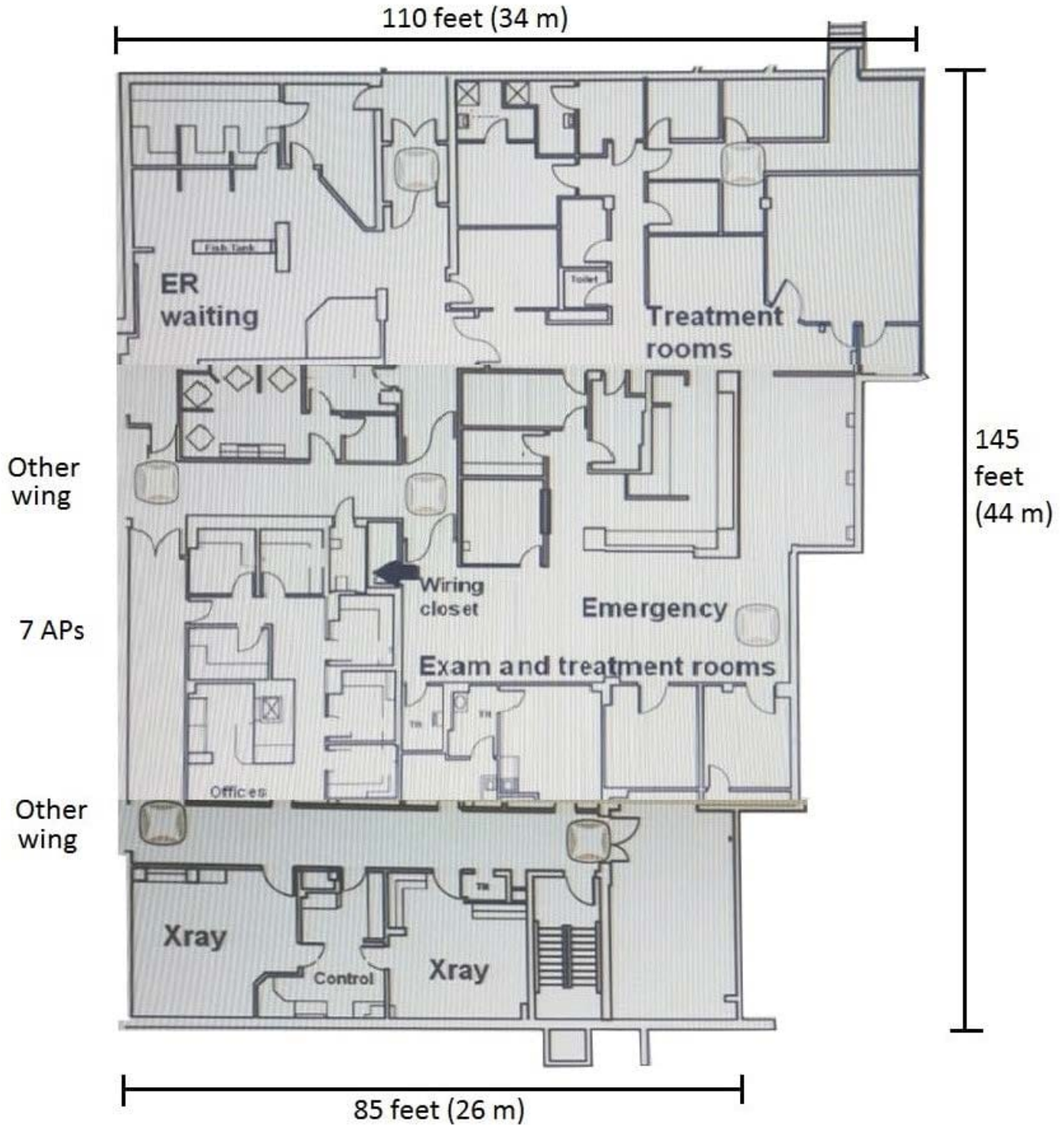
A hospital needs an upgrade to 802.11ac for its wireless network, which needs to provide complete coverage. The hospital has a concrete exterior and uses drywalls for all of the interior walls with a few exceptions as mandated for safety. The building has 10 foot (3m) ceilings. The legacy APs were deployed in the hallway, but the customer is open to deploying APs in any room such as reception areas, patient rooms, operating rooms, treatment rooms, and lounges. The wireless network must support wireless medical devices, voice communicators for medical staff, laptops in nurse stations, medical staff tablets, and visitor and patient personal devices. All of these devices support both the 2.4GHz

and 5GHz band. The exhibits below show one wing of one floor of the hospital. This wing is about 14,000 square feet (1300 sq. m). This area has up to: 40 concurrent patients and visitors, who might have up to two devices 40 concurrent staff members, who might have up to three devices About 100 medical and other types of wireless devices

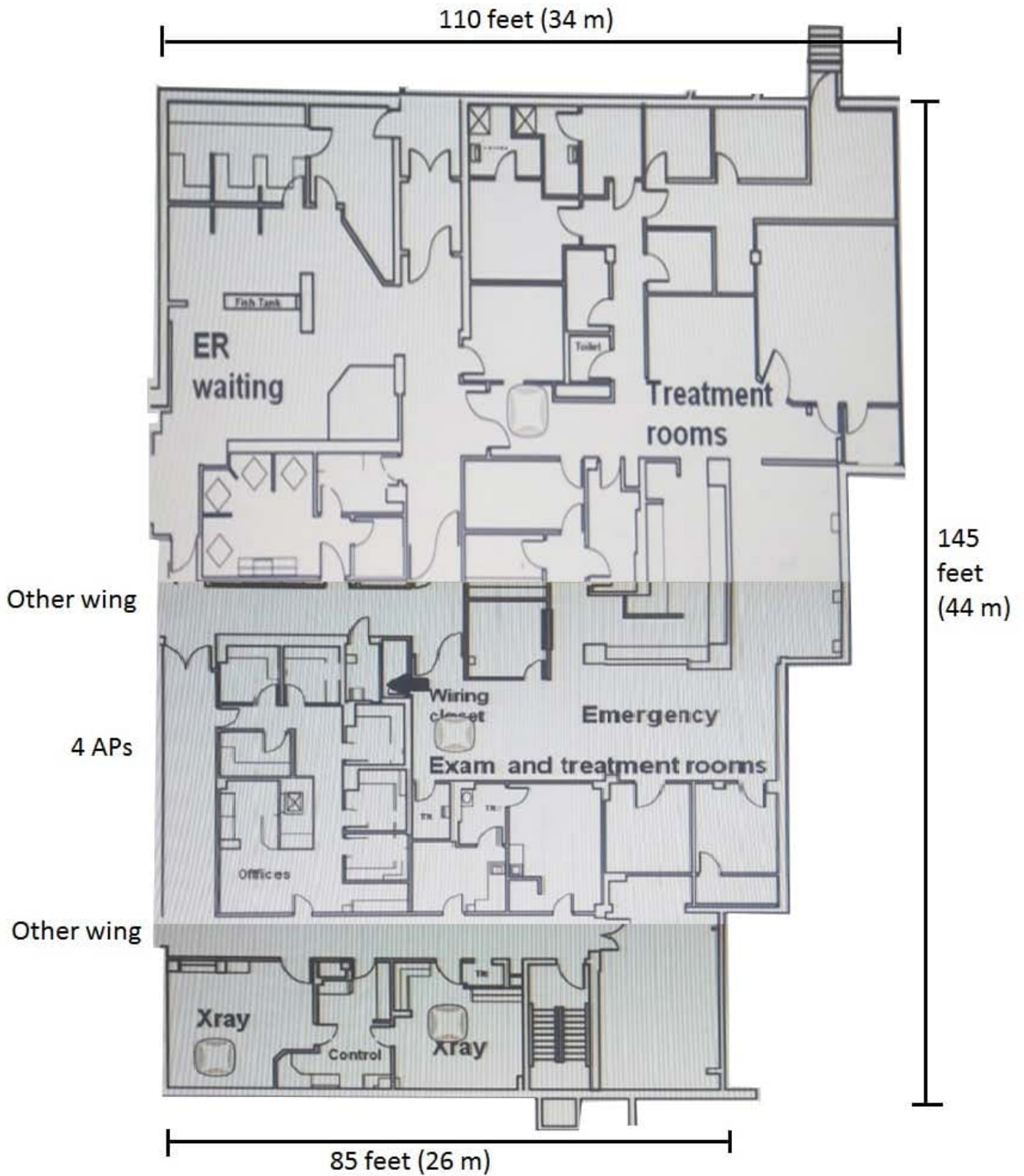
Several of these wireless medical devices are in the X-ray and X-ray control rooms. The architect has already planned to place APs in stairwells on another floor.

Which AP plan for this wing of this floor meets the customer needs?

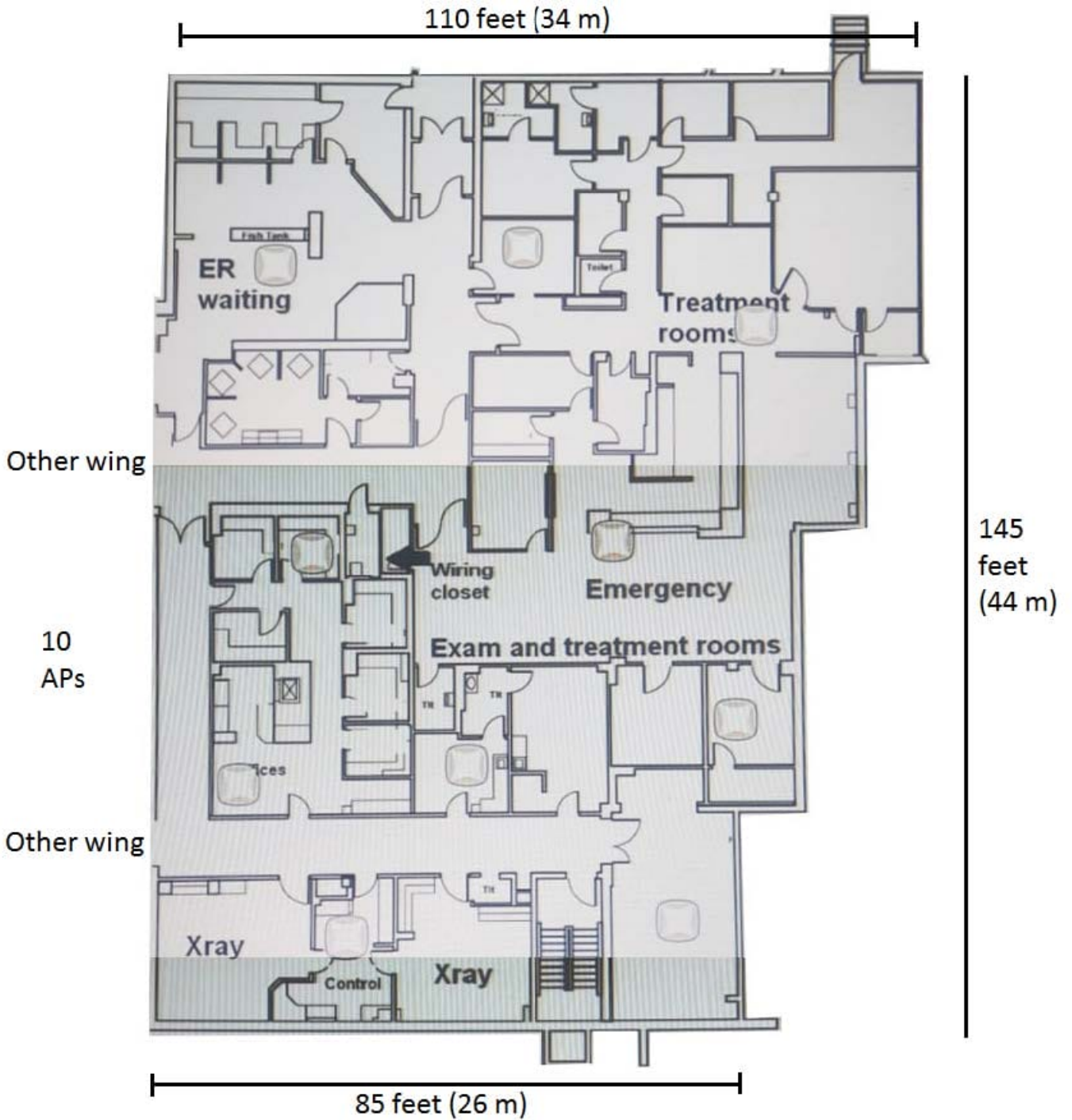
A.



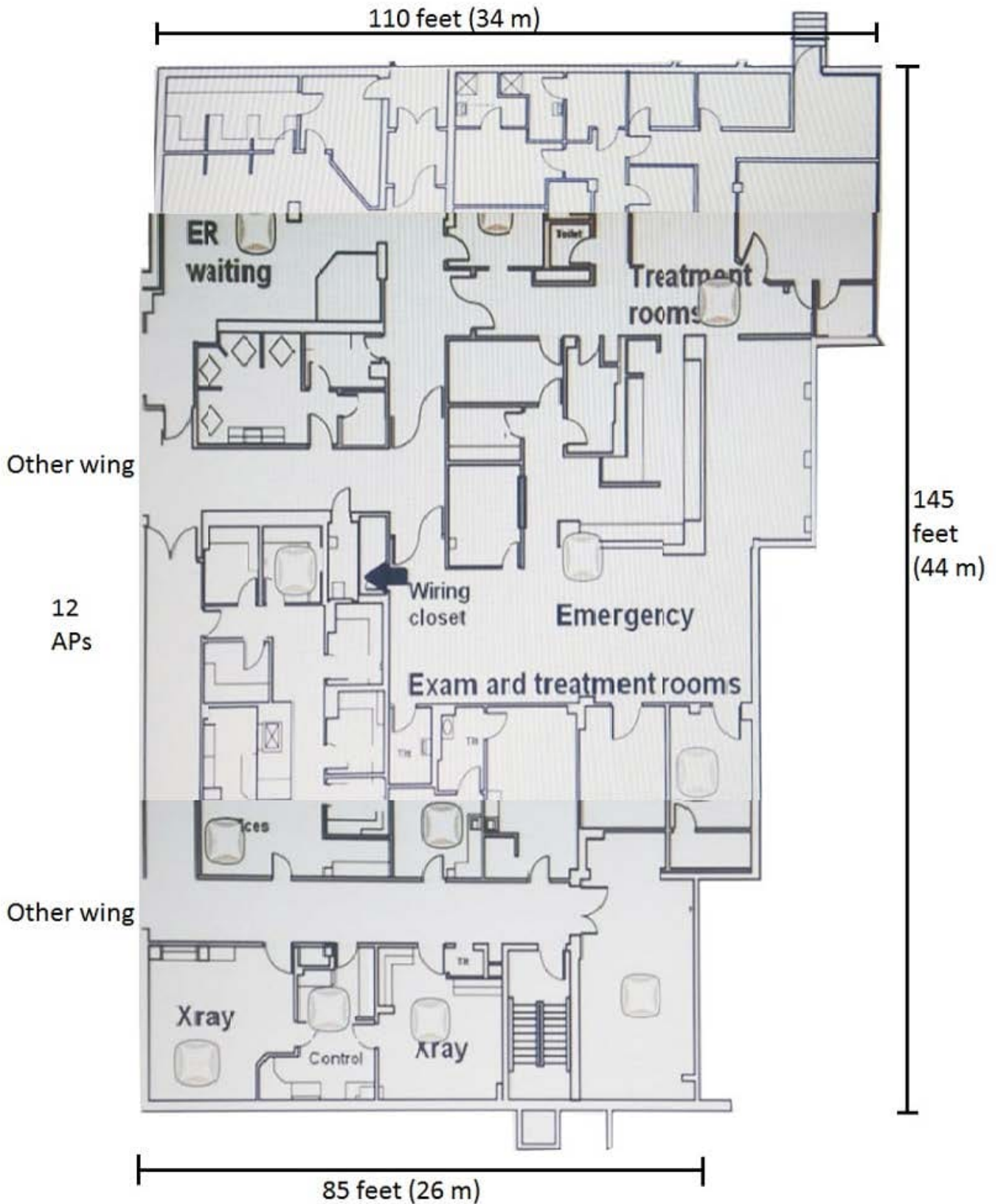
B.



C.



D.



Correct Answer: D

QUESTION 3

A customer has an existing Aruba wireless solution to provide wireless access for employees. The solution includes APs, mobility controllers (MCs) at the network core, and a Mobility Master (MM). A customer would like to set up a separately managed guest network and have the traffic go directly to the DMZ.

What should the architect suggest as the simplest solution that meets the requirements?

- A. Add APs in a dedicated AP group to support only the guest network SSID.
- B. Have a dedicated mobility controller in the DMZ managed by the same MM.
- C. Double the number of APs and controllers
- D. Use MultiZone, and put a mobility controller in the DMZ.

Correct Answer: D

QUESTION 4

A customer has multiple medium and large branch sites, each of which requires between 8 and 16 APs and supports between 200 and 600 wireless clients. Every branch site has an internet connection, which it uses to reach the central data center. The customer would prefer the WAN links to be optimized in the solution. Each side handles between 1 and 2 Gbps of traffic, most of which goes to the central data center. The data center has 7210 controllers for terminating the VPN connections.

Which branch office solution best meets the customer needs?

- A. CAPs and branch office controllers with an SD-WAN license
- B. IAPs and no branch office controllers
- C. CAPs and branch office controllers
- D. RAPs and no branch office controllers

Correct Answer: B

QUESTION 5

Case study

A customer needs a wireless network upgrade for 802.11ac and possibly an upgrade to the wired network.

The customer requires dual-radio 802.11ac APs, each radio of which can support 4x4 MIMO at full feature set.

The customer has given architects this information about their wireless devices:

2700 IoT devices which will have only wireless connections; they support WPA2 with 802.1X

300 on each floor in 3 buildings with 3 floors each

5,400 users, who use devices such as laptops and smartphones

600 users on each floor in 3 buildings with 3 floors each

24 security cameras which will have only wireless connections; they support WPA2 with 802.1X and have a local power source

4 on floor 1 of each of the 3 buildings

2 on the other 6 floors

The architect also has collected information about the existing wired network.

The existing access layer switches support these features:

10/100/1000 edge ports

PoE (802.3af)

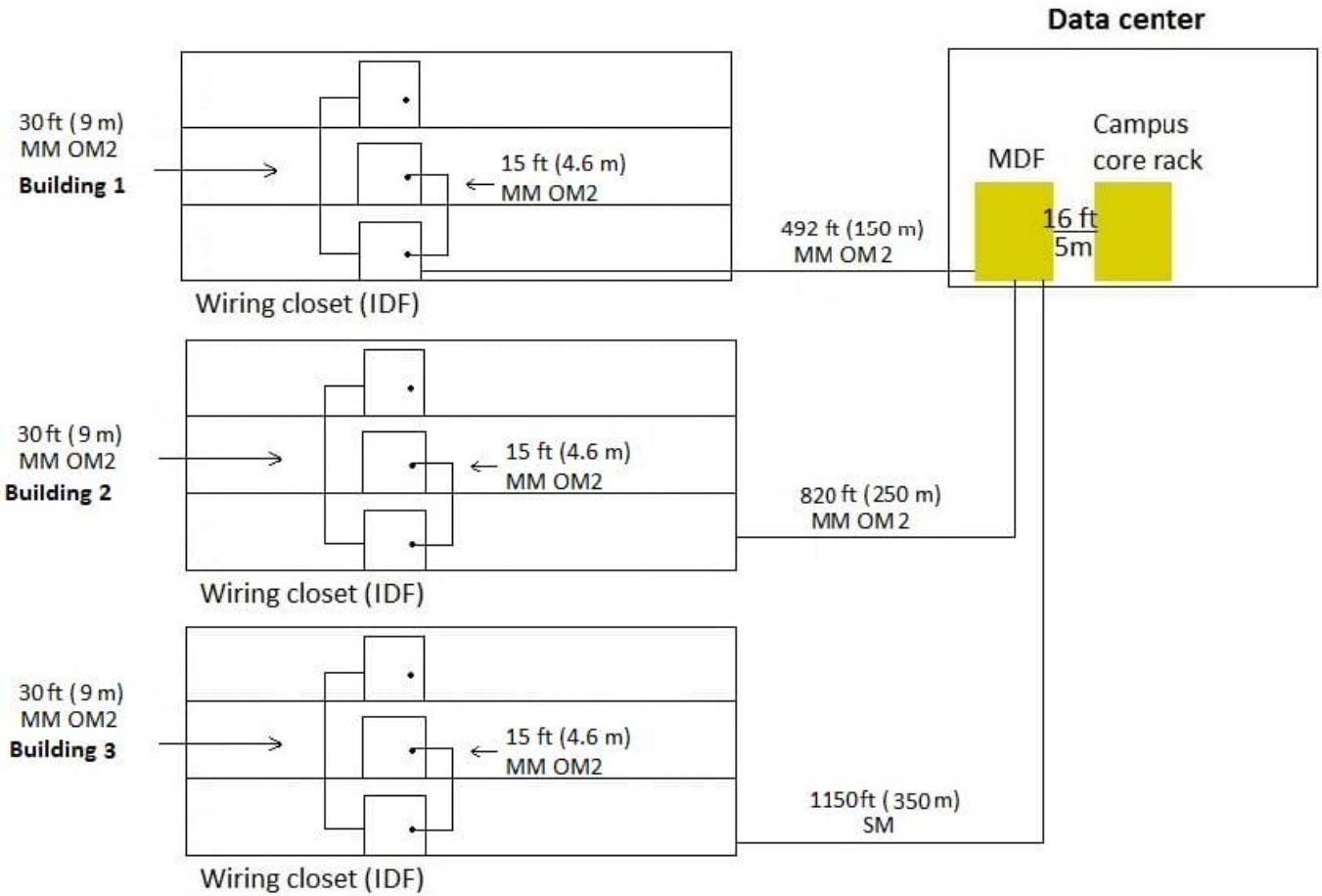
1GbE fiber uplinks

The existing aggregation switches support these features:

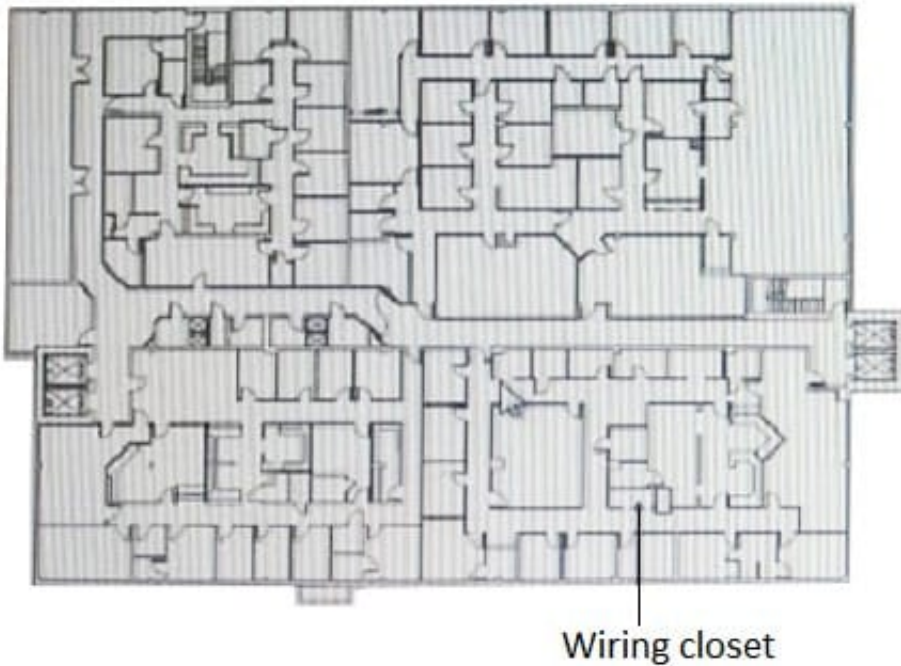
1/10GbE fiber ports

ARP tables up to 62,000

The customer has provided this figure that shows the existing cabling between floors and between buildings:



Each floor is about 100 feet (30 m) by 140 feet (43 m) with a 10 foot (3 m) ceiling. Interior walls are drywall. The layout for each floor is similar to that shown below. CAT5e cable is extended to all areas.



What is one change to the existing network that the architect should recommend to meet the new customer

requirements?

- A. upgrade to at least CAT7 cable for all the wired drops
- B. upgrade to MM OM3 fiber between the floors
- C. new aggregation layer switches to support larger ARP tables
- D. new access layer switches to support PoE+

Correct Answer: B

[HPE6-A49 VCE Dumps](#)

[HPE6-A49 Exam Questions](#)

[HPE6-A49 Braindumps](#)