

JN0-347^{Q&As}

Enterprise Routing and Switching, Specialist (JNCIS-ENT)

Pass Juniper JN0-347 Exam with 100% Guarantee

Free Download Real Questions & Answers **PDF** and **VCE** file from:

<https://www.pass2lead.com/jn0-347.html>

100% Passing Guarantee
100% Money Back Assurance

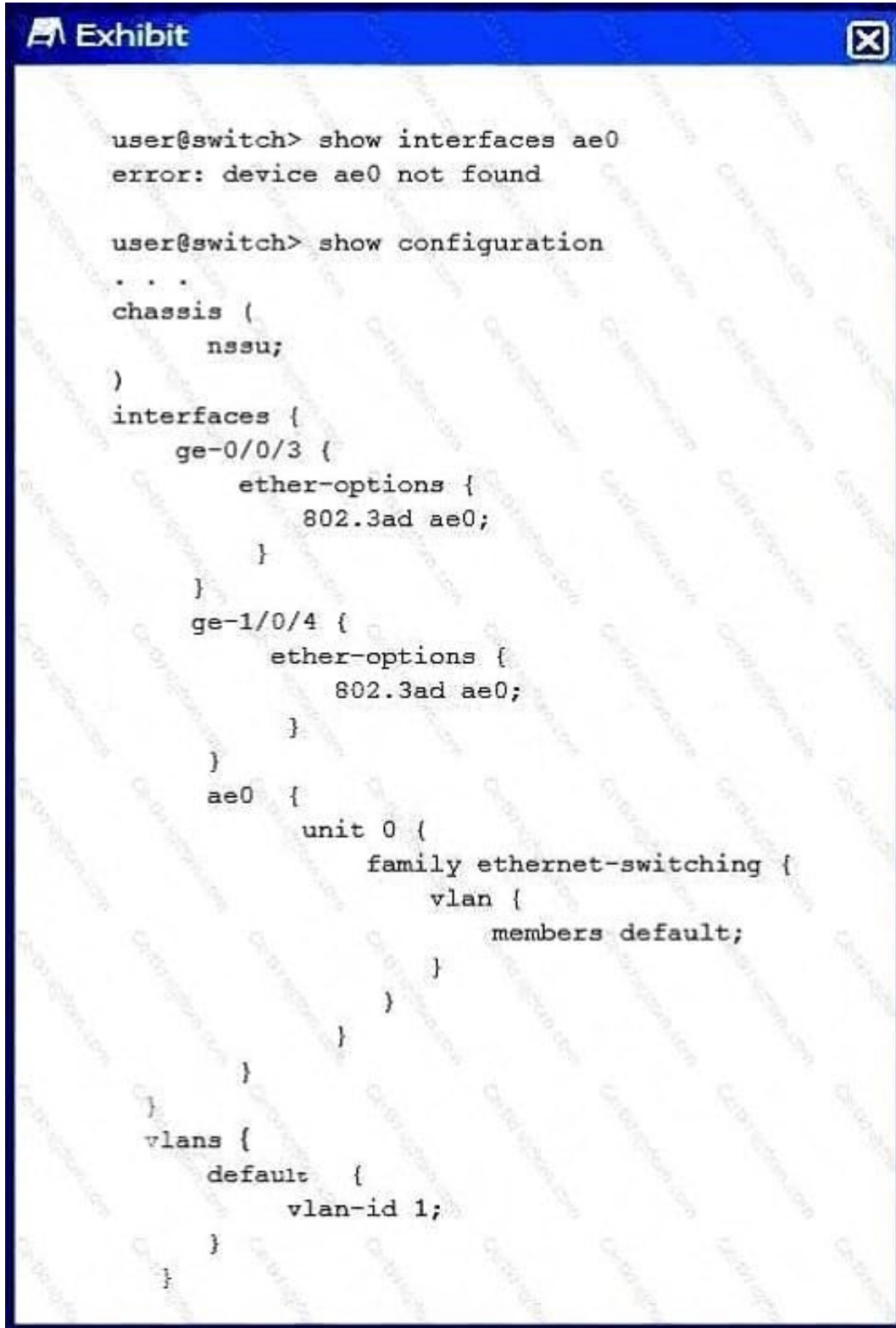
Following Questions and Answers are all new published by Juniper
Official Exam Center

-  **Instant Download** After Purchase
-  **100% Money Back** Guarantee
-  **365 Days** Free Update
-  **800,000+** Satisfied Customers



QUESTION 1

Click the Exhibit button. Referring to the exhibit, what is the problem?



```
user@switch> show interfaces ae0
error: device ae0 not found

user@switch> show configuration
. . .
chassis (
  nssu;
)
interfaces {
  ge-0/0/3 {
    ether-options {
      802.3ad ae0;
    }
  }
  ge-1/0/4 {
    ether-options {
      802.3ad ae0;
    }
  }
  ae0 {
    unit 0 {
      family ethernet-switching {
        vlan {
          members default;
        }
      }
    }
  }
}
vlans {
  default {
    vlan-id 1;
  }
}
```

A. LAG requires more than two member links.

- B. LACP is required for LAG to work.
- C. Aggregated interfaces must be defined under the chassis stanza;
- D. The LAG member interfaces are configured across different line cards.

Correct Answer: C

Use the link aggregation feature to aggregate one or more links to form a virtual link or link aggregation group (LAG).

QUESTION 2

Which two statements are correct about redundant trunk groups on EX Series switches? (Choose two.)

- A. Layer 2 control traffic is permitted on the secondary link.
- B. If the active link fails, then the secondary link automatically takes over.
- C. Redundant trunk groups load balance traffic across two designated uplink interfaces.
- D. Redundant trunk groups use spanning tree to provide loop-free redundant uplinks.

Correct Answer: AB

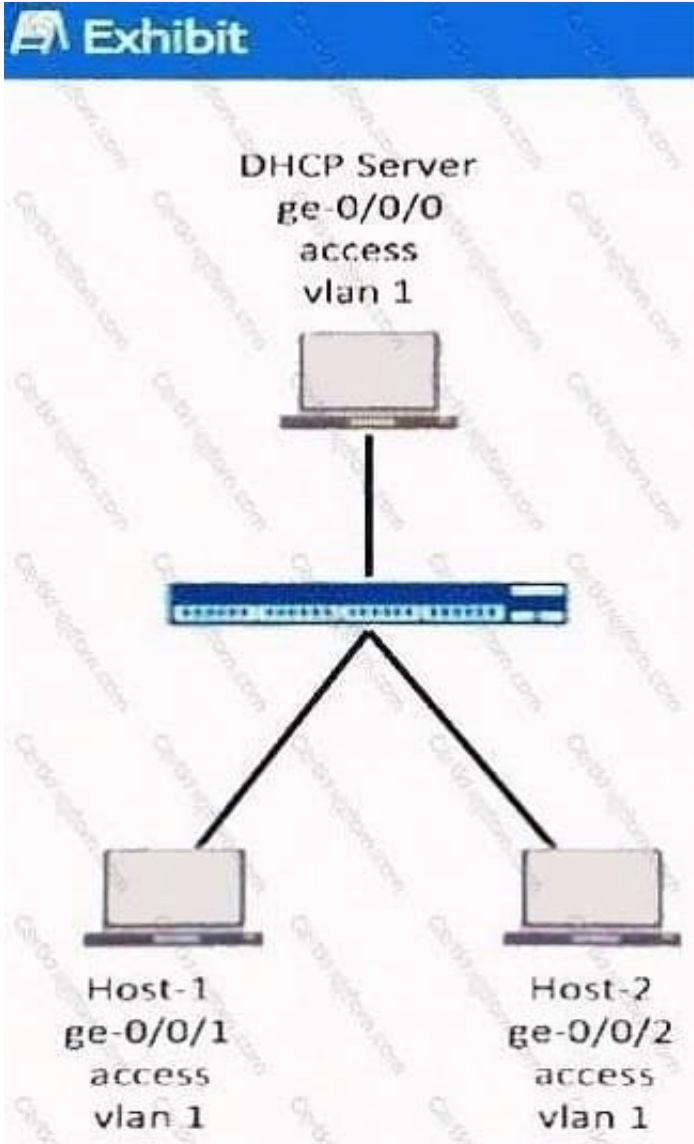
A: While data traffic is blocked on the secondary link, Layer 2 control traffic is still permitted. For example, an LLDP session can be run between two switches on the secondary link.

B: The redundant trunk group is configured on the access switch and contains two links: a primary or active link, and a secondary link. If the active link fails, the secondary link automatically starts forwarding data traffic without waiting for normal spanning-tree protocol convergence.

QUESTION 3

Click the Exhibit button. You are notified that clients connected to your EX Series switch are not receiving IP addresses from the DHCP server.

You examine the switch configuration and notice that DHCP snooping has been enabled. In this scenario, what would cause the problem?



- A. The location information is not being inserted into the DHCP option 82 requests.
- B. The dynamic ARP inspection feature needs to be enabled on the ge-0/0/0 interface.
- C. The DHCP relay setting in the forwarding-options hierarchy has not been configured.
- D. The DHCP server's ge-0/0/0 interface has not been configured as a trusted interface.

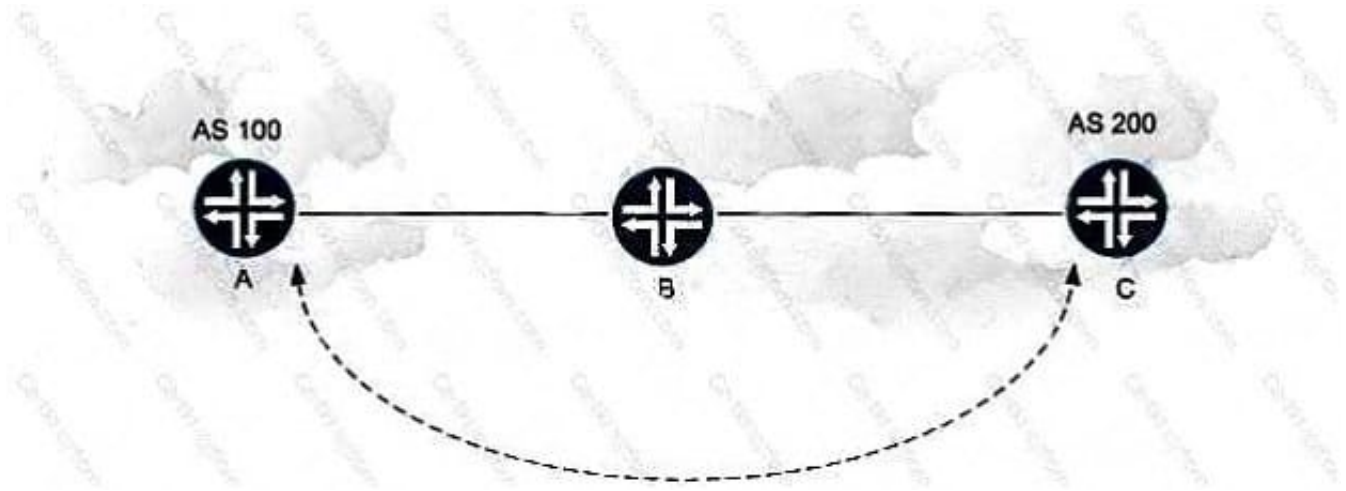
Correct Answer: B

You can configure DHCP snooping, dynamic ARP inspection (DAI), MAC limiting, persistent MAC learning, and MAC move limiting on the access ports of EX Series switches to protect the switches and the Ethernet LAN against address spoofing and Layer 2 denial-of-service (DoS) attacks.

You can also configure a trusted DHCP server and specific (allowed) MAC addresses for the switch interfaces. Step-by- Step Procedure Configure basic port security on the switch: Etc.

QUESTION 4

Referring to the exhibit, you want router A to have an EBGP peering with router C. They are both connected through router B, which does not have BGP running, and has static routes configured.



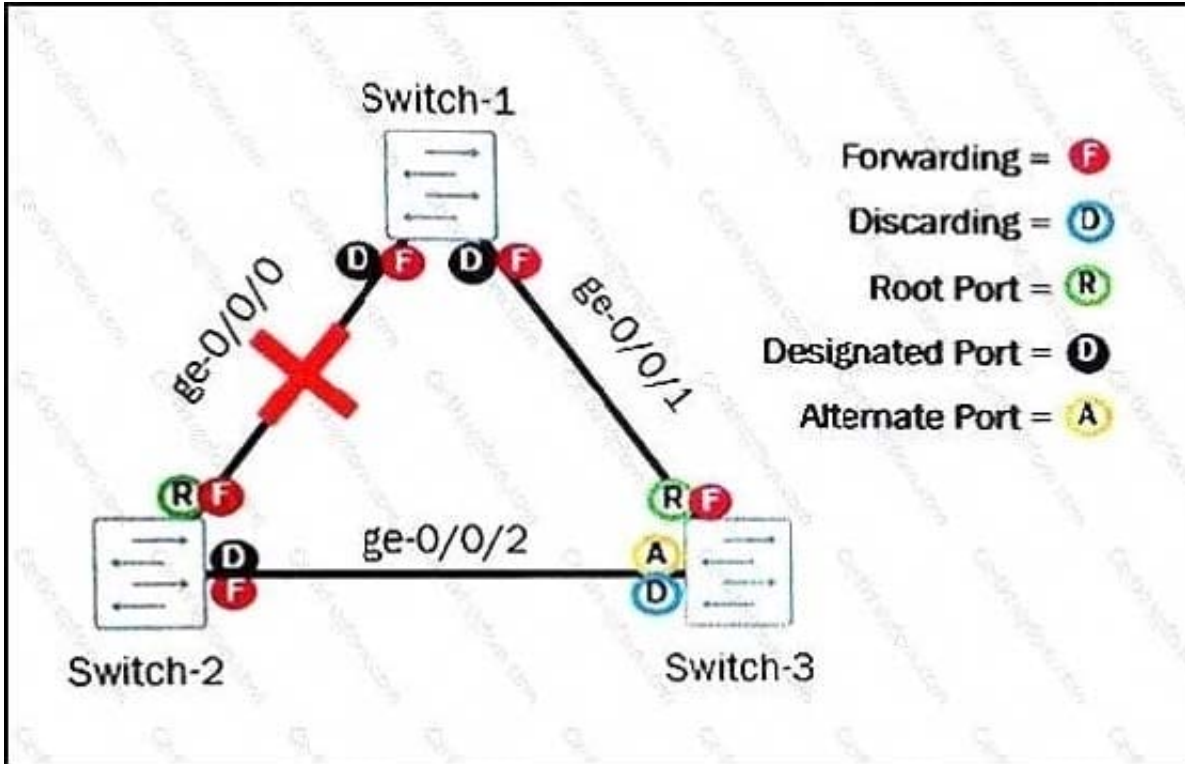
What must be configured in the EBGP peer groups on routers A and C to make this connection possible?

- A. MED
- B. multihop
- C. multipath
- D. next-hop

Correct Answer: B

QUESTION 5

Click the Exhibit button.



You manage the Layer 2 network shown in the exhibit. You experience a failure on the ge-0/0/0 link between Switch-1 and Switch-2.

Which statement is correct about the expected behavior?

- A. Switch-3's ge-0/0/2 port role and state will transition to designated and forwarding.
- B. Switch-3's ge-0/0/2 port role and state will remain as alternate and discarding.
- C. Switch-3 will become the root bridge for the RSTP topology.
- D. Switch-3 will remove the ge-0/0/2 interface from the RSTP topology.

Correct Answer: A