

JN0-663^{Q&As}

Service Provider Routing and Switching, Professional (JNCIP-SP)

Pass Juniper JN0-663 Exam with 100% Guarantee

Free Download Real Questions & Answers **PDF** and **VCE** file from:

<https://www.pass2lead.com/jn0-663.html>

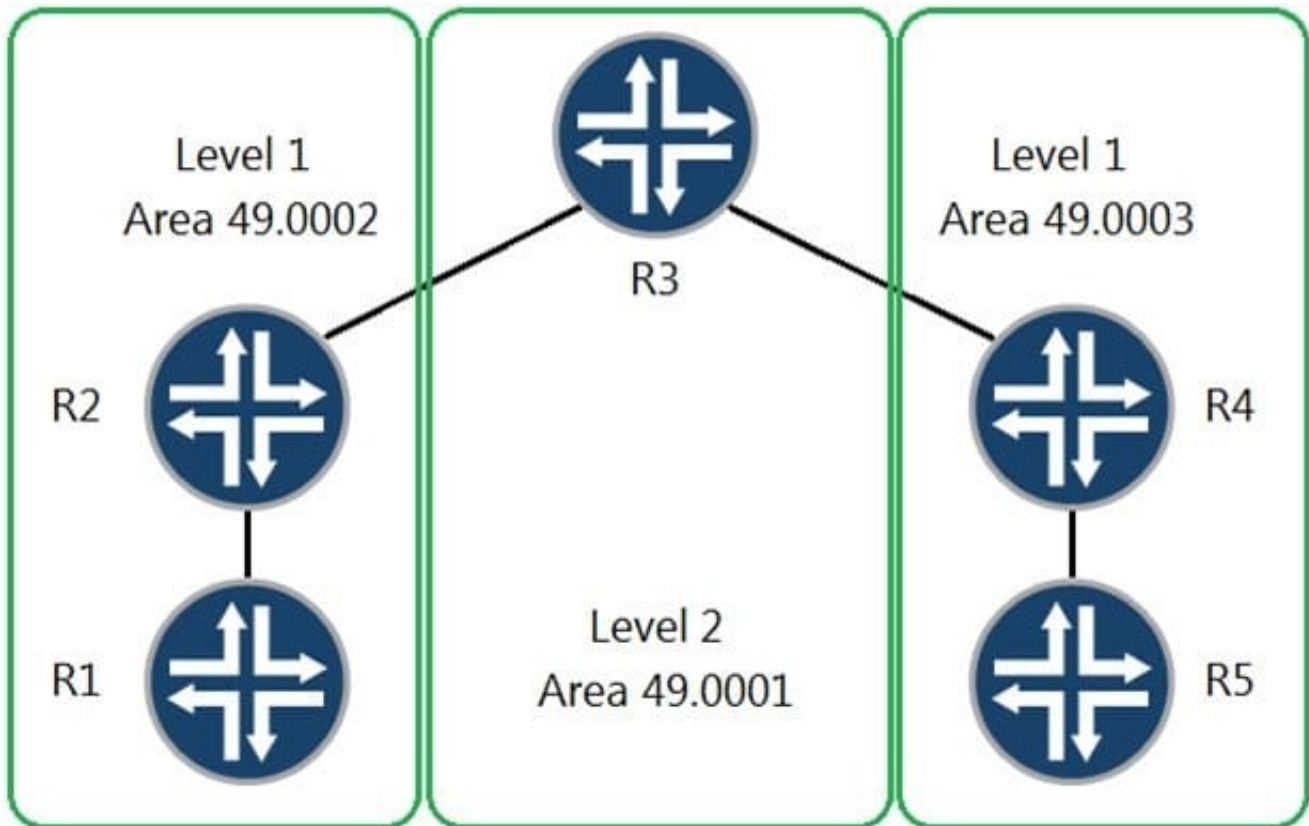
100% Passing Guarantee
100% Money Back Assurance

Following Questions and Answers are all new published by Juniper
Official Exam Center

- ⚙️ **Instant Download** After Purchase
- ⚙️ **100% Money Back** Guarantee
- ⚙️ **365 Days** Free Update
- ⚙️ **800,000+** Satisfied Customers



QUESTION 1



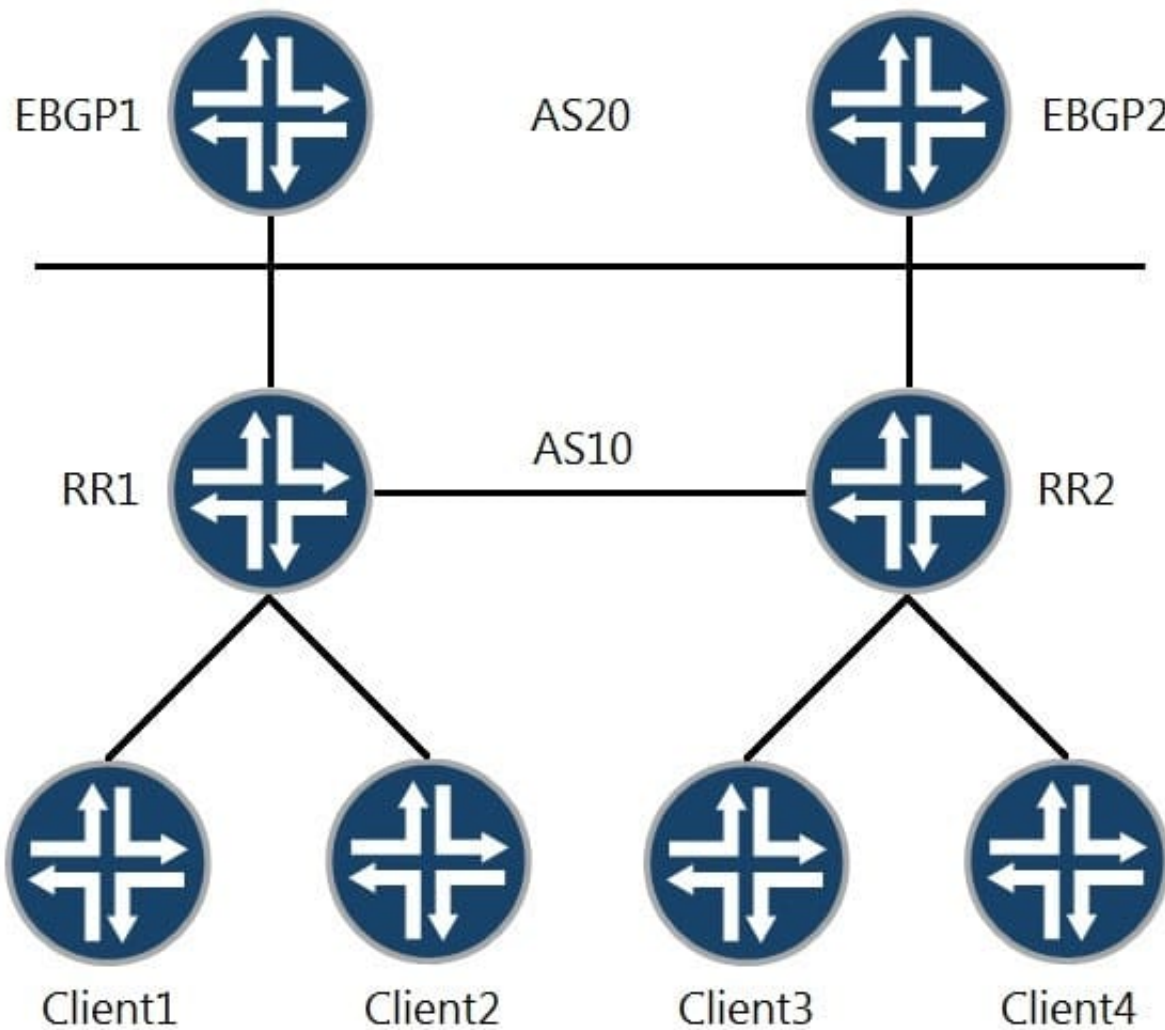
All adjacencies have been formed, no extra options have been configured, and no policies have been written.

Referring to the exhibit, which two statements are correct? (Choose two.)

- A. R2 will create a default route and send it as a TLV to R1
- B. R1 cannot reach R5
- C. R1 can reach R5
- D. R1 will create its own default route that points to R2

Correct Answer: AC

QUESTION 2

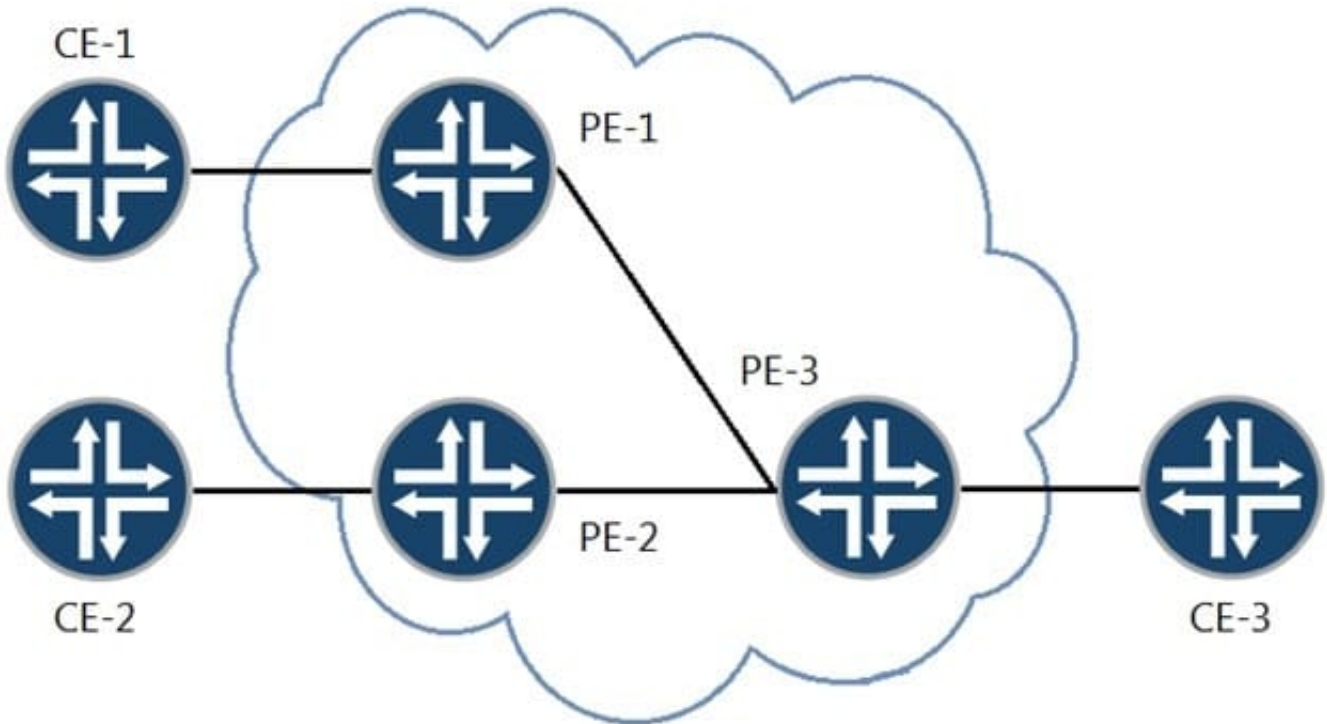


Referring to the exhibit, which two statements about route reflectors are correct? (Choose two.)

- A. RR1 advertises routes learned from Client1 to RR2 with itself as the next hop.
- B. RR2 advertises routes learned from Client3 to EBGP2 with itself as the next hop.
- C. RR1 and RR2 need the same cluster ID to exchange routes learned from their clients.
- D. RR2 adds its cluster ID when advertising routes from Client4 to Client3.

Correct Answer: BD

QUESTION 3



CE-1, CE-2, and CE-3 are part of a single VPLS VPN. An Ethernet frame has just arrived at PE-3 from CE

3. It has a source MAC address of CE-3 and a destination MAC address of CE-1. You want to know what PE-3 does with the Ethernet frame.

Referring to the exhibit, which statement is correct?

- A. It drops the packet because the destination MAC address is not in PE-3's MAC table.
- B. It forwards the packet to PE-1 and PE-2.
- C. It forwards the packet to PE-1 only.
- D. It drops the packet because the destination MAC address is not for PE-3.

Correct Answer: B

QUESTION 4

```
user@router> show bgp summary
Threading mode: BGP I/O
Groups: 1 Peers: 1 Down peers: 0
Table      Tot Paths  Act Paths  Suppressed  History  Damp State  Pending
inet.0
           0         0         0         0         0         0         0
Peer      AS      InPkt     OutPkt  OutQ     Flaps Last Up/Dwn
State|#Active/Received/Accepted/Damped...
192.168.1.2  64512    33        33       0        1      14:11 Establ
  inet.0: 0/0/0/0

user@router> show route advertising-protocol bgp 192.168.1.2

user@router>

user@router> show configuration protocols bgp
group northstar {
  type internal;
  local-address 192.168.1.1;
  family inet {
    unicast;
  }
  neighbor 192.168.1.2;
}
```

You are troubleshooting BGP routing issues between two MX Series routers. The BGP session is established but no BGP routes are being communicated.

What are two reasons for this problem? (Choose two.)

- A. The peer type should be external.
- B. No active BGP routes are in the inet.0 table.
- C. The peers are in different ASs.
- D. No export routing policy is applied.

Correct Answer: BD

QUESTION 5

```
[edit routing-instances]
user@PE-1# show
vpn=a {
    instance-type vrf;
    interface ge-1/1/4.0;
    route-distinguisher 192.168.1.1:1;
    vrf-target target:65111:101;
    protocols {
        bgp {
            group my-ext-group {
                type external;
                peer-as 65601;
                neighbor 10.0.10.2;
            }
        }
    }
}
```

You have an established Layer 3 VPN between two PE devices. You are asked to only send certain routes from PE-1 over the VPN to the remote site while maintaining all the routes on the PE-1 device. You created a policy that matches the specific routes and then tags these routes with the appropriate target community values.

In this scenario, which configuration changes must be made to satisfy the requirement?

- A. Configure the export parameter and apply the policy to the my-ext-group BGP group configuration.
- B. Configure the vrf-export parameter and apply the policy under the edit routing-instances vpn-a hierarchy.
- C. Configure a RIB group and apply the policy as an import policy to routes distributed into the bgp.13vpn.0 routing table.
- D. Configure the import parameter and apply the policy to the my-ext-group BGP group configuration.

Correct Answer: B