

JN0-663^{Q&As}

Service Provider Routing and Switching, Professional (JNCIP-SP)

Pass Juniper JN0-663 Exam with 100% Guarantee

Free Download Real Questions & Answers **PDF** and **VCE** file from:

<https://www.pass2lead.com/jn0-663.html>

100% Passing Guarantee
100% Money Back Assurance

Following Questions and Answers are all new published by Juniper
Official Exam Center

- ⚙️ **Instant Download** After Purchase
- ⚙️ **100% Money Back** Guarantee
- ⚙️ **365 Days** Free Update
- ⚙️ **800,000+** Satisfied Customers



QUESTION 1

```
user@R2# show protocols isis
level 1 disable;
interface ge-0/0/0.0;
interface ge-0/0/1.0 {
    level 2 metric 300;
}
```



```
user@R1# show protocols isis
level 1 disable;
interface ge-0/0/0.0;
```

```
user@R3# show protocols isis
level 1 disable;
interface ge-0/0/1.0;
```

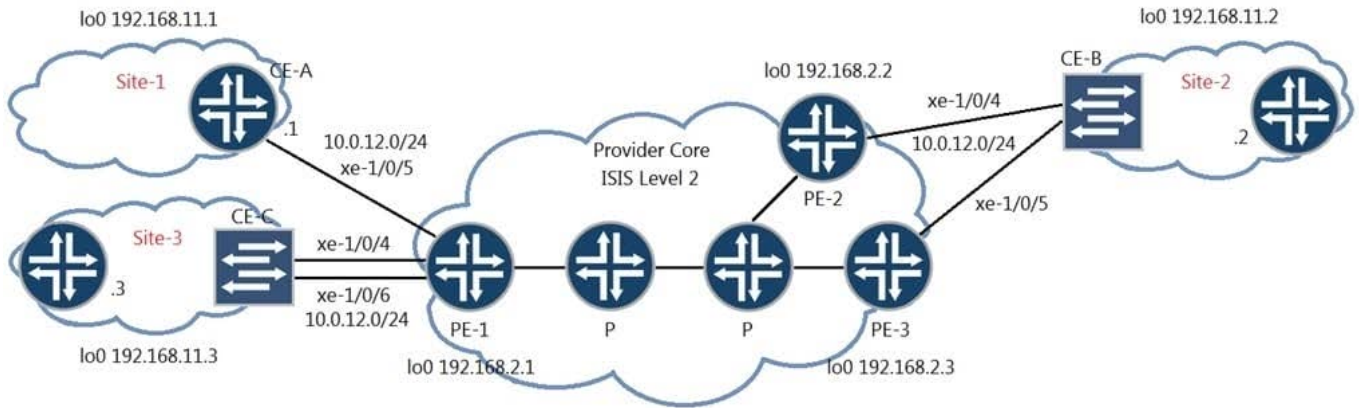
AREA 49.0001

Referring to the exhibit, what will the IS-IS cost be for R1 to reach R3?

- A. 73
- B. 20
- C. 301
- D. 310

Correct Answer: D

QUESTION 2



You have the LDP signaled VPLS topology as shown in the exhibit. CE-B at Site-2 is multihomed to both PE-2 and PE-3.

In this scenario, where would you configure loop prevention?

- A. PE-1
- B. CE-B
- C. PE-3
- D. PE-2

Correct Answer: A

QUESTION 3

You have a mixed vendor EVPN environment and you need to ensure VXLAN interoperability between all devices.

In this scenario, which statement is correct?

- A. You should only use pure Type 2 routes.
- B. You should only use pure Type 5 routes.
- C. You should only use Type 2 and Type 5 routes.
- D. You should only use Type 6 and Type 2 routes.

Correct Answer: C

QUESTION 4

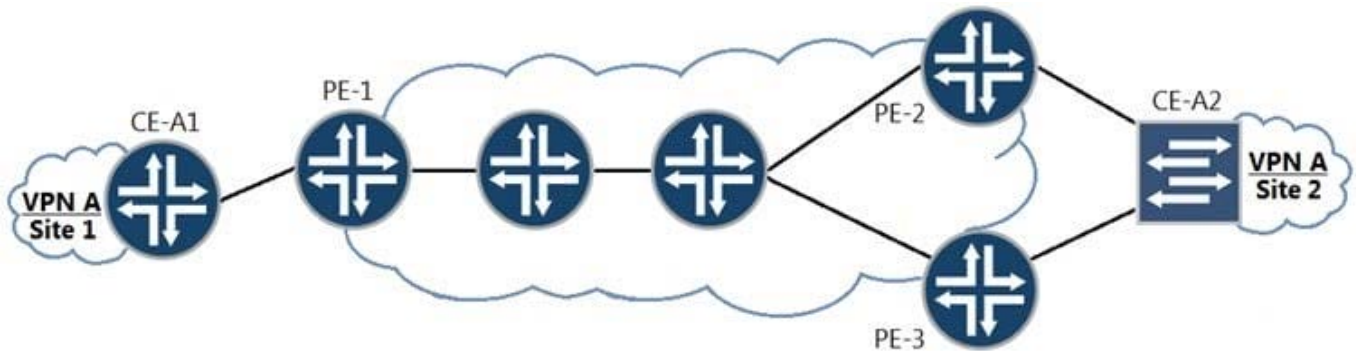
You are responsible for configuring CoS for your network. Your network includes a video application with strict latency requirements, so that any packets delayed by more than 75 ms are effectively useless. You want to ensure that you do not waste buffer space.

When configuring the scheduler for this application, which feature would you use?

- A. remainder
- B. exact
- C. temporal
- D. rate limit

Correct Answer: C

QUESTION 5



Referring to the exhibit, you need to implement VPLS between CE-A1 and CE-A2. You must ensure that no loops are created due to the multihoming of the connection from CE-A2 to PE2 and PE3.

Based on the type of VPLS, which two solutions will satisfy this requirement? (Choose two.)

- A. In an LDP VPLS, configure a primary and backup neighbor.
- B. In an LDP VPLS, configure multihoming and local preference on PE-2 and PE-3.
- C. In a BGP VPLS, configure multihoming and local preference on PE-2 and PE-3.
- D. In a BGP VPLS, configure a primary and backup neighbor.

Correct Answer: AC

[Latest JN0-663 Dumps](#)

[JN0-663 VCE Dumps](#)

[JN0-663 Exam Questions](#)