

JPR-934^{Q&As}

Security, Expert (JNCIE-SEC)

Pass Juniper JPR-934 Exam with 100% Guarantee

Free Download Real Questions & Answers **PDF** and **VCE** file from:

<https://www.pass2lead.com/jpr-934.html>

100% Passing Guarantee
100% Money Back Assurance

Following Questions and Answers are all new published by Juniper
Official Exam Center

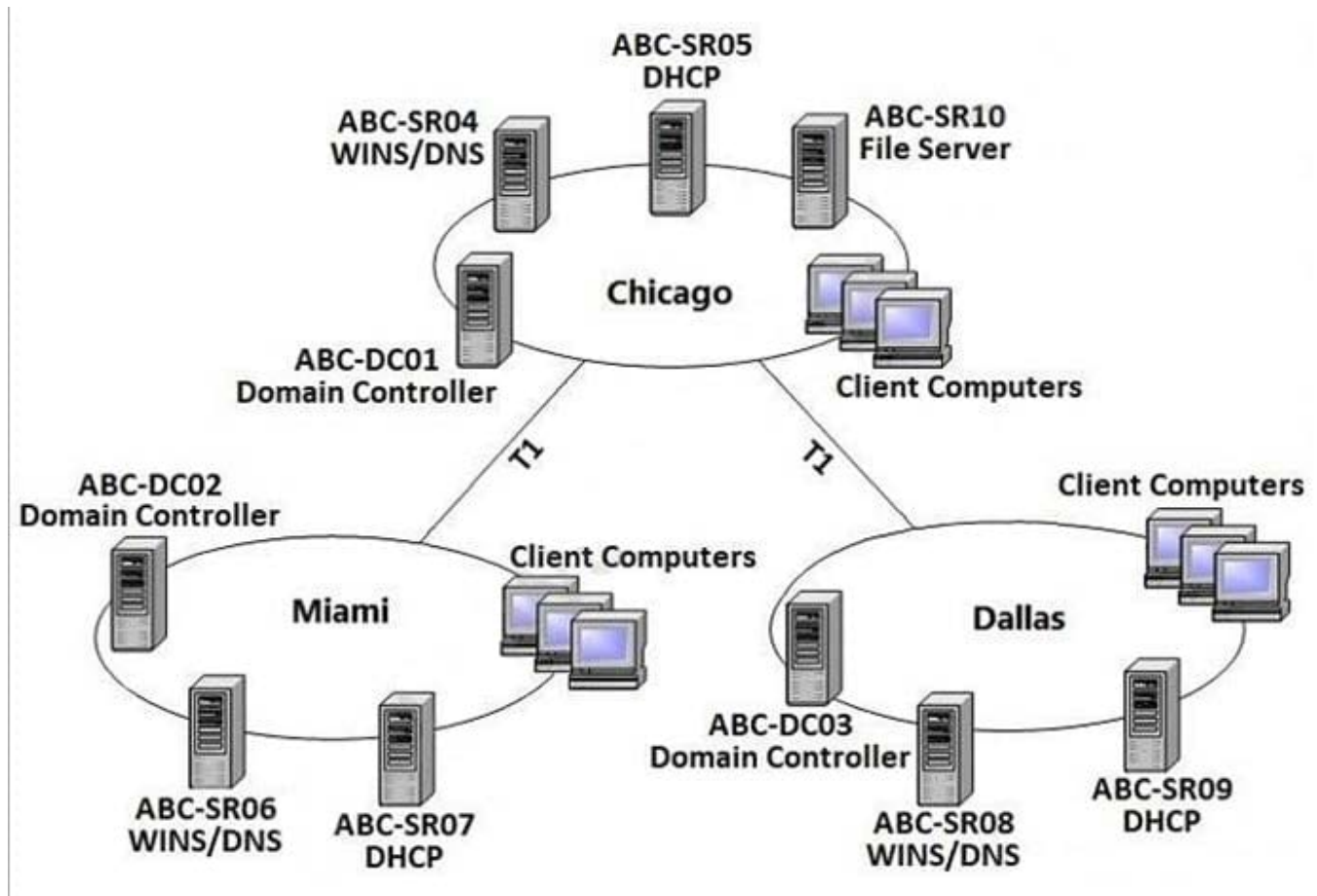
-  **Instant Download** After Purchase
-  **100% Money Back** Guarantee
-  **365 Days** Free Update
-  **800,000+** Satisfied Customers



QUESTION 1

The ABC.com network consists of a single Active Directory domain named ABC.com. All servers on the ABC.com network run Windows Server.

ABC.com has its headquarters in Chicago and two branch offices in Dallas and Miami. The branch offices are connected to the headquarters by means of T1 WAN links. The network at each office is configured as a separate Active Directory site as shown below.



ABC.com users in all three sites require access to a file server named ABC-SR10 that is located in the Chicago site.

Users in the Miami and Dallas offices are complaining about the unacceptable file server performance during peak working hours. You want to design a solution that provides fault tolerance for the file server and minimizes traffic over the WAN

links during office hours.

Which solution would you recommend?

- A. Implement a Distributed File System (DFS) with the DFS root in the Chicago office and DFS replicas in the Dallas and Miami offices. Configure replication to occur during off-peak hours.
- B. Install Windows Server file servers in the Dallas and Miami offices. Use the File Replication Service to replicate the folders during off-peak hours.

- C. Implement a two-node file server cluster in the Chicago office using Microsoft Cluster Services.
- D. Implement a two-node file server cluster in each office using Microsoft Cluster Services.

Correct Answer: A

QUESTION 2

The ABC.com network consists of a single Active Directory domain named ABC.com.

You deploy an enterprise certification authority (CA) on a Windows Server computer named ABC-CA1. The primary purpose of the CA is issue company users with digital certificates to enable them to authenticate with the new company Intranet website. You create a new certificate template named Web Authentication. You enable the Web Authentication certificate template on ABC-CA1 and configure the default domain group policy so that users who log on to the domain receive a Web

Authentication certificate.

The following morning users complain that they do not have certificates which can be used to authenticate to the Intranet Web site.

How can you ensure the users are issued with a certificate?

- A. By configuring ABC-CA1 to be an Enterprise Subordinate CA of a public CA such as Verisign.
- B. By modifying the permissions of the Web Authentication certificate template to give the Domain Users group the Allow – Autoenroll permission.
- C. By adding your Domain Admin user account to the Cert Managers group in Active Directory.
- D. By configuring the Default Domain Controllers GPO to assign the certificates to users when they log on.

Correct Answer: B

QUESTION 3

You are implementing a new wireless network and need to change the default settings for the equipment on the WLAN. What information should you change? (Select all that apply.)

- A. SSID password
- B. SSID network name
- C. Domain Administrator password
- D. Domain Administrator account should be renamed

Correct Answer: AB

QUESTION 4

The ABC.com network consists of a single Active Directory domain named ABC.com.

You want to improve the security on the Windows Server domain controllers by configuring enhanced password policies and audit settings.

Which security template should you apply to the domain controllers?

- A. Setup security.inf.
- B. Hisecws.inf.
- C. DC security.inf.
- D. Securews.inf.
- E. Securedc.inf.
- F. Compatws.inf.
- G. Rootsec.inf.

Correct Answer: E

QUESTION 5

You are the backup administrator for your company. You are responsible for ensuring that all data on ten files servers are protected against data loss. Normal business hours from 8 A.M. to 5 P.M., Monday through Friday, are observed.

Network access is prohibited outside normal business hours.

A member server named File1 contains shared folder accessed by users in the sales department. The disk structure of File1 is shown in the following exhibit:

Volume	Hosts	Disk Size	Available Space
C	System and Boot Files	9 GB	2.54 GB
D	Shared Folders and User Profiles	25 GB	9.8 GB
F	Shared Folders	75 GB	53.35 GB

You have scheduled a daily backup of File1 as shown in the exhibit. (Click the Exhibit(s) button.) Users in the Sales department frequently leave documents open on their desktops when they leave work. These users occasionally request that

you restore a previous version of a file from backup. However, some of these files are not included in recent backup sets. You must modify the backup procedures for File1 so that all files, including open documents, will be included in the daily

backup. You also want to provide users with the ability to restore their files.

What should you do? (Choose all that apply. Each correct answer presents part of the solution.)

- A. Move all shared user data folders from drive D to drive F.

- B. Move all shared folders user data from drive F to drive D.
- C. Enable Shadow Copies of Shared Folders on drive F.
- D. Enable Volume shadow copy for the scheduled backup job.
- E. Select the Disable volume shadow copy option for the scheduled backup job.
- F. Install the Previous Versions Client software on all Sales department computers.
- G. Create a new daily backup job by using the same settings, but clear the Disable volume shadow copy option.

Correct Answer: ACFG

[JPR-934 VCE Dumps](#)

[JPR-934 Study Guide](#)

[JPR-934 Exam Questions](#)