

JPR-961^{Q&As}

Juniper Networks Certified Internet Expert (JNCIE-SP)

Pass Juniper JPR-961 Exam with 100% Guarantee

Free Download Real Questions & Answers **PDF** and **VCE** file from:

<https://www.pass2lead.com/jpr-961.html>

100% Passing Guarantee
100% Money Back Assurance

Following Questions and Answers are all new published by Juniper
Official Exam Center

- ⚙️ **Instant Download** After Purchase
- ⚙️ **100% Money Back** Guarantee
- ⚙️ **365 Days** Free Update
- ⚙️ **800,000+** Satisfied Customers



QUESTION 1

The ABC.com network consists of a single Active Directory domain named ABC.com. All servers on the ABC.com network run Windows Server Enterprise Edition and all client computers run Windows XP Professional. ABC.com has its headquarters in Chicago and a branch office in Dallas.

The Chicago and Dallas offices are connected by permanent leased line connection with a hardware router at each end of the connection.

Currently all client computers in both offices receive their IP configurations from a single Windows Server 2003 server located in the Chicago office.

You are designing a new DHCP architecture to improve the performance and reliability of the system.

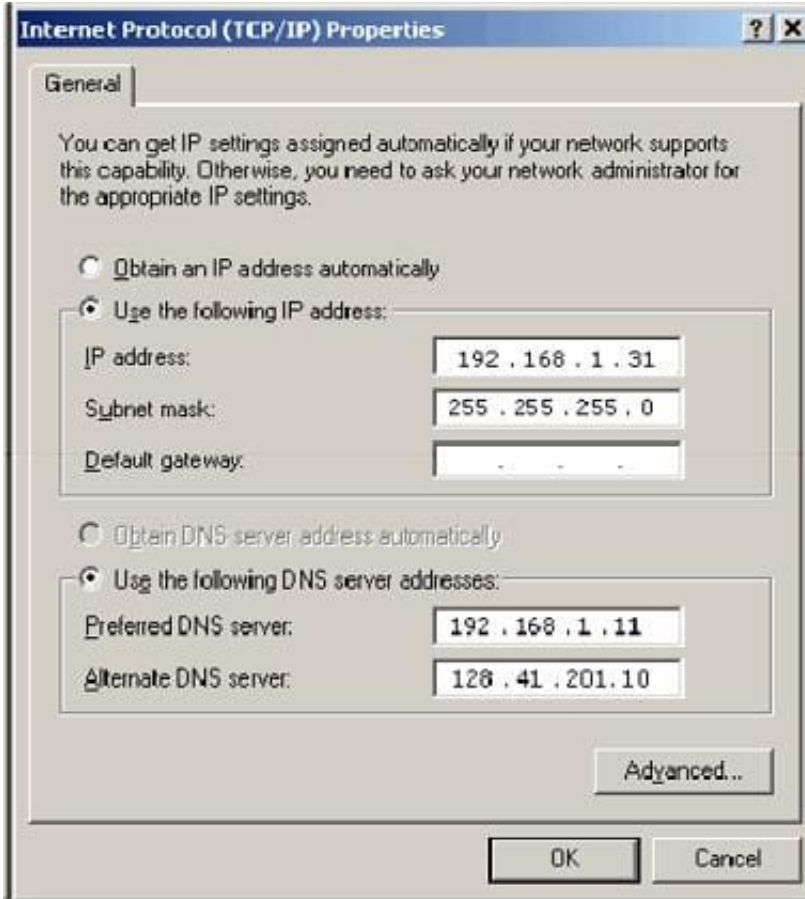
How would you ensure that DHCP services will continue to function in the event of a failure of any single component? (Choose two.)

- A. Set up two Windows Server computers as a DHCP server cluster in the Chicago office.
- B. Install two Windows Server computers as a DHCP server cluster in the Dallas office.
- C. Configure a Windows Server computer at the Dallas office as a DHCP relay agent.
- D. Install a Windows Server computer as an additional DHCP server in the Dallas office.
- E. Set up a Windows Server 2003 computer at the Chicago office as a DHCP relay agent.
- F. Configure one DHCP server to handle 75 percent of the IP address scope and the other DHCP server to handle 25 percent.

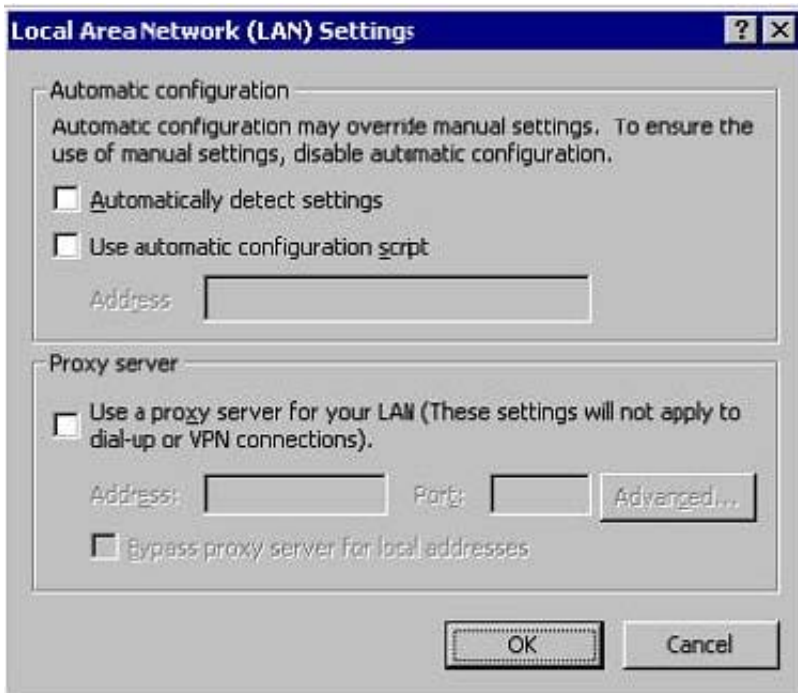
Correct Answer: AB

QUESTION 2

Mark works as a Network Administrator for ABC.com. The company has a Windows domainbased network. The network has six Windows member servers and 120 Windows XP Professional client computers. All the member servers are using static IP configuration. Five of the member servers work as Intranet Web servers, and one of them named ISERV works as a Routing and Remote Access server. The NAT/Basic routing protocol is enabled to route traffic between the local network and the Internet. ISERV's internal IP address is 192.168.1.1. The Web servers' static IP configuration is shown in the image below:



The Web servers require Internet access to display Web pages from the Internet. The Web servers are configured with the Internet Explorer LAN settings as shown in the image below:



The users on the intranet report that only the local Web pages stored on the Web servers are displayed. Mark attempts to view the Web pages on the Internet from one of the Web servers, but he is unable to do so. Mark wants all the Web

servers to be able to access the Web pages on the Internet. What will he do to accomplish this?

- A. On the TCP/IP Properties page on the Web servers, configure the default gateway as 192.168.1.1.
- B. Configure the Web servers to receive IP addresses from the DHCP server.
- C. In the LAN settings dialog box on all the Web servers, configure port 80.
- D. On the TCP/IP Properties page on the Web servers, configure the default gateway as 255.255.255.0.

Correct Answer: A

QUESTION 3

All the servers on the network run Windows Server server and all the client computers run Windows XP.

The network contains three domain controllers named ABC-DC1, ABC-DC2 and ABC-DC3. The System State Data of each domain controller is backed up on a nightly basis.

Recently an organizational unit (OU) has been mistakenly deleted from the AD.

What is the quickest way to restore the deleted OU?

- A. Reboot the domain controller in Safe Mode then use Windows Backup.
- B. Reboot the domain controller in Directory Services Restore Mode then perform an authoritative restore of the subtree where the OU was deleted using the Ntdsutil utility.
- C. Reboot the domain controller in Directory Services Restore Mode then perform a non-authoritative restore of the subtree where the OU was deleted using the Ntdsutil utility.
- D. Reboot the domain controller using the Last Known Good Configuration.
- E. Use Active Directory Sites and Services to force replication from another domain controller.

Correct Answer: B

QUESTION 4

The ABC.com network consists of a single Active Directory domain named ABC.com.

You want to improve the security on the Windows Server domain controllers by configuring enhanced password policies and audit settings.

Which security template should you apply to the domain controllers?

- A. Setup security.inf.
- B. Hisecws.inf.
- C. DC security.inf.
- D. Securews.inf.

E. Securedc.inf.

F. Compatws.inf.

G. Rootsec.inf.

Correct Answer: E

QUESTION 5

You work as a Network Administrator for ABC.com. The company has a Windows domainbased network. In order to automate the TCP/IP configuration for the client computers in the network, you install the DHCP Server service on a Windows member server. You want to ensure that all the network printers always use the same IP address. In order to accomplish this, you create IP address reservations for the network printers while creating the DHCP scope. You also define an exclusion range for the printers. Now, none of the printers are receiving the IP addresses. However, the client computers are not experiencing this problem. What will you do to resolve the issue?

A. Remove the exclusion range for the addresses that are being used by the printers.

B. Assign the IP addresses to the printers manually.

C. Run the IPCONFIG /release command-line utility on the printers.

D. Remove the client reservations for the addresses that are being used by the printers.

Correct Answer: A

[JPR-961 PDF Dumps](#)

[JPR-961 Practice Test](#)

[JPR-961 Exam Questions](#)